

Recreational Property 46+/- Acres in Covich County, MS



\$230,000

Check out this 46+/- acre recreational tract in the Stronghope Community of Covich County, MS. This property is a must-see. It features multiple food plots, an extensive internal road system, and unmatched timber value. With abundant road frontage and a pond gracing its southern border, this land offers accessibility and natural beauty. Situated within the Wesson School District, it also adds to the desirability. Call Clif to schedule your showing today!

Directions from the intersection of Sylvarena Road and I-55 in Wesson, MS: Take Exit 51 (Sylvarena Rd) and travel east on Sylvarena Road for 1.5 miles. Turn left onto Lowery Road and travel 1.7 miles. Turn right onto Hwy 51 and travel .2 miles. Turn left onto Bahala Road and travel .4 miles. Turn left onto Beauregard Road and travel 9.8 miles. Turn left onto Monticello Road and travel for .9 miles. Turn left to remain on Monticello Road and travel 1 miles The properties will be on the left. [GOOGLE MAP LINK](#)



**CLIF
CANNON**
REALTOR®

Office: 601.990.5070

Cell: 601.565.1070

Clif@TomSmithLand.com



A Real Estate Expert You Can Trust

TomSmithLandandHomes.com

Information is believed to be accurate but not guaranteed.





CLIF CANNON

REALTOR®

Office: 601.990.5070

Cell: 601.565.1070

Clif@TomSmithLand.com



A Real Estate Expert You Can Trust

TomSmithLandandHomes.com

Information is believed to be accurate but not guaranteed.





CLIF CANNON

REALTOR®

Office: 601.990.5070

Cell: 601.565.1070

Clif@TomSmithLand.com



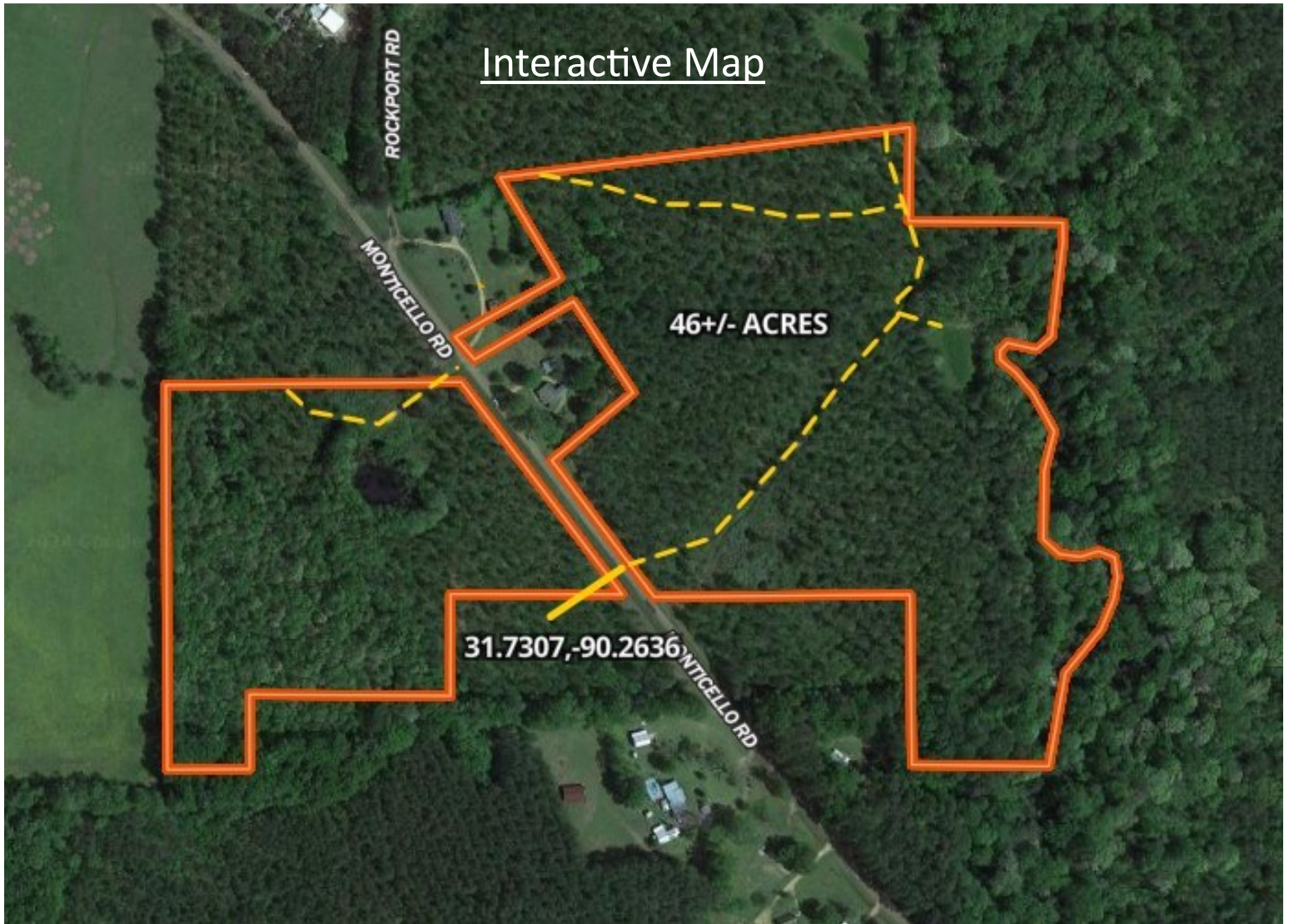
A Real Estate Expert You Can Trust

TomSmithLandandHomes.com

Information is believed to be accurate but not guaranteed.



Aerial Map



CLIF CANNON

REALTOR®

Office: 601.990.5070

Cell: 601.565.1070

Clif@TomSmithLand.com



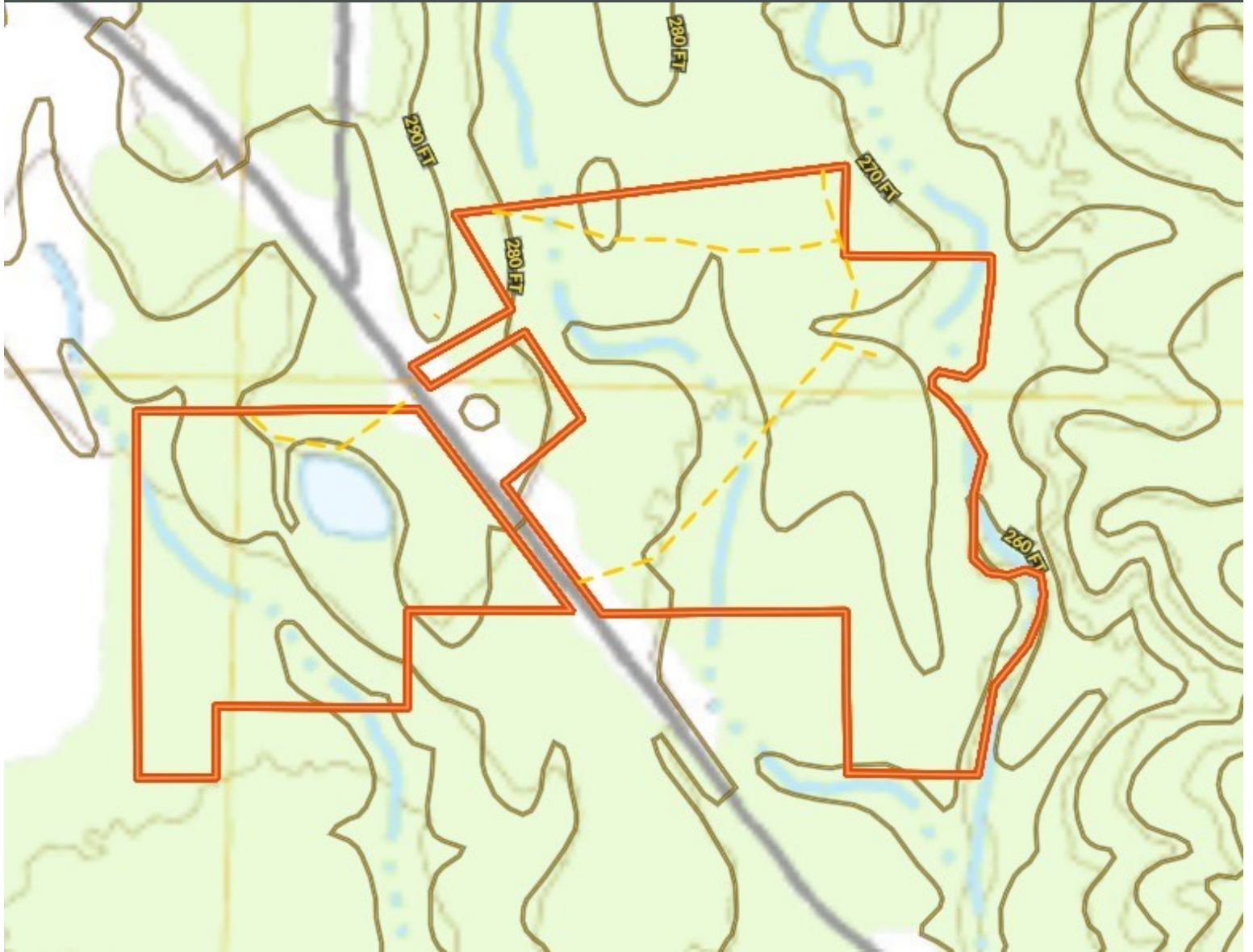
A Real Estate Expert You Can Trust

TomSmithLandandHomes.com

Information is believed to be accurate but not guaranteed.



Topographic Map



CLIF CANNON

REALTOR®

Office: 601.990.5070

Cell: 601.565.1070

Clif@TomSmithLand.com



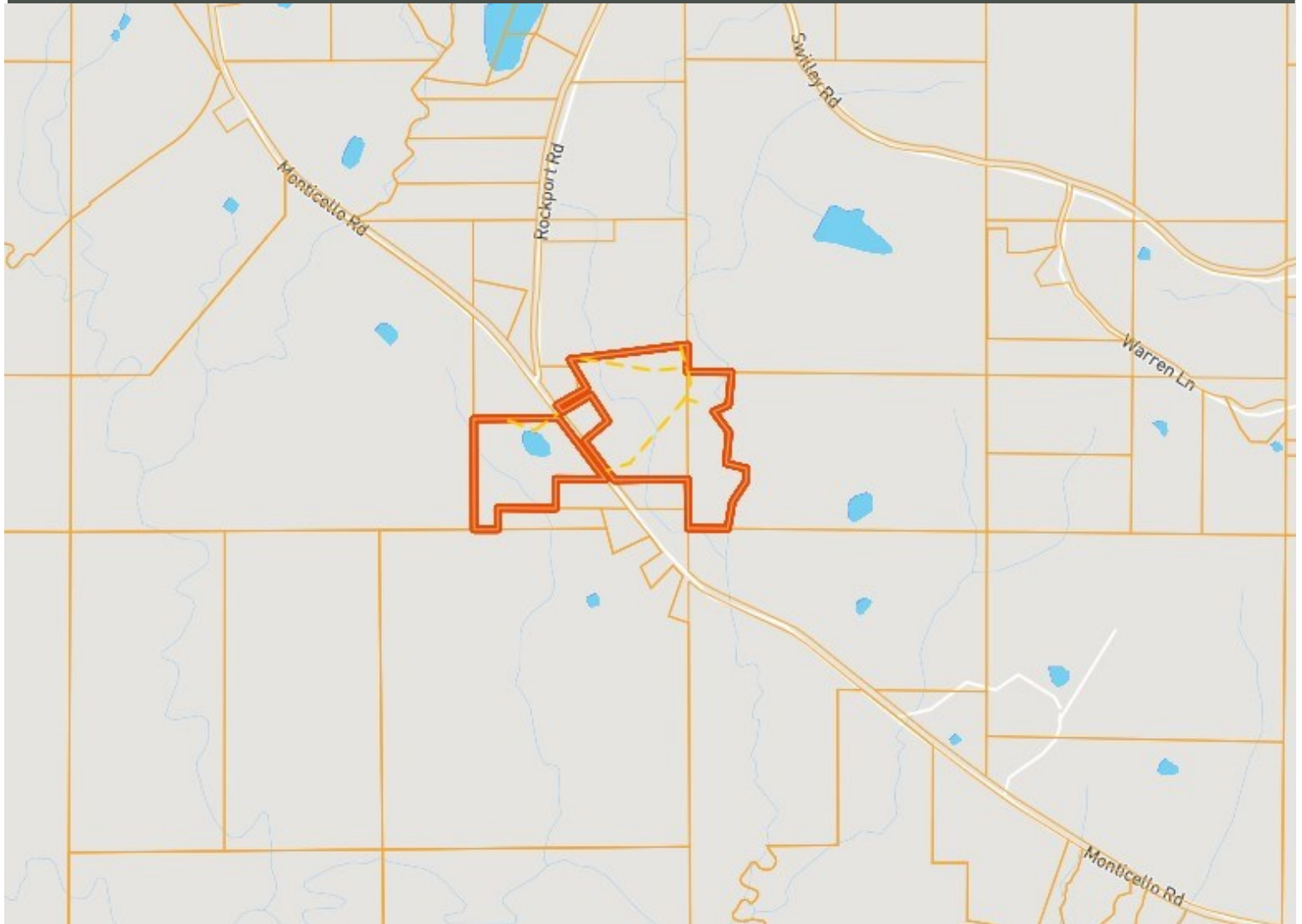
A Real Estate Expert You Can Trust

TomSmithLandandHomes.com

Information is believed to be accurate but not guaranteed.



Ownership Map



CLIF CANNON

REALTOR®

Office: 601.990.5070

Cell: 601.565.1070

Clif@TomSmithLand.com



A Real Estate Expert You Can Trust

TomSmithLandandHomes.com

Information is believed to be accurate but not guaranteed.



Flood Map



CLIF CANNON

REALTOR®

Office: 601.990.5070

Cell: 601.565.1070

Clif@TomSmithLand.com



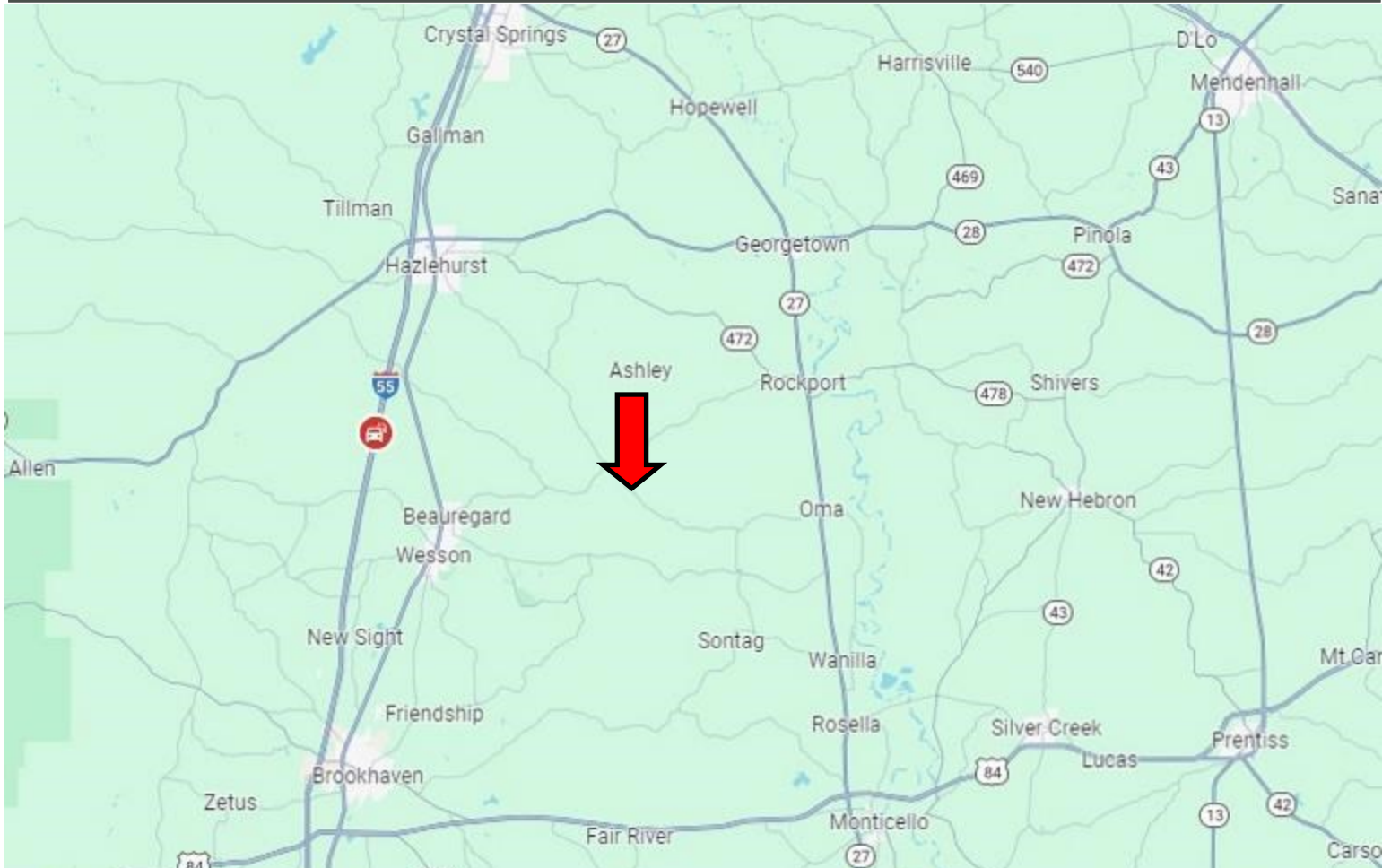
A Real Estate Expert You Can Trust

TomSmithLandandHomes.com

Information is believed to be accurate but not guaranteed.



Directional Map



Directions from the intersection of Syluarena Road and I-55 in Wesson, MS: Take Exit 51 (Syluarena Rd) and travel east on Syluarena Road for 1.5 miles. Turn left onto Lowery Road and travel 1.7 miles. Turn right onto Hwy 51 and travel .2 miles. Turn left onto Bahala Road and travel .4 miles. Turn left onto Beaugard Road and travel 9.8 miles. Turn left onto Monticello Road and travel for .9 miles. Turn left to remain on Monticello Road and travel 1 miles The properties will be on the left. [GOOGLE MAP LINK](#)



**CLIF
CANNON**
REALTOR[®]

Office: 601.990.5070
Cell: 601.565.1070
Clif@TomSmithLand.com



A Real Estate Expert You Can Trust

TomSmithLandandHomes.com

Information is believed to be accurate but not guaranteed.

