

Three 14+/- ACRE LOTS in Copiah County, MS



\$,5,000 PER ACRE

Take a look at these three 14+/- acre lots nestled in the Stronghope Community of Copiah County, MS. Offering an array of possibilities, each lot is an ideal option for recreational enjoyment or building your dream home. With valuable timber resources and convenient road frontage along Rockport Road or Monticello Road, these lots ensure accessibility and natural beauty. Situated within the Wesson School District, these properties present an enticing opportunity to embrace rural living at its finest. Call Clif to schedule your private showing today!

Directions from the intersection of Sylvarena Road and I-55 in Wesson, MS: Take Exit 51 (Sylvarena Rd) and travel east on Sylvarena Road for 1.5 miles. Turn left onto Lowery Road and travel 1.7 miles. Turn right onto Hwy 51 and travel .2 miles. Turn left onto Bahala Road and travel .4 miles. Turn left onto Beauregard Road and travel 9.8 miles. Turn left onto Monticello Road and travel for .9 miles. Turn left to remain on Monticello Road and travel 1 miles The properties will be on both sides of the road.

[GOOGLE MAP LINK](#)



**CLIF
CANNON**
REALTOR®

Office: 601.990.5070

Cell: 601.565.1070

Clif@TomSmithLand.com



A Real Estate Expert You Can Trust

TomSmithLandandHomes.com

Information is believed to be accurate but not guaranteed.





CLIF CANNON

REALTOR®

Office: 601.990.5070

Cell: 601.565.1070

Clif@TomSmithLand.com



A Real Estate Expert You Can Trust

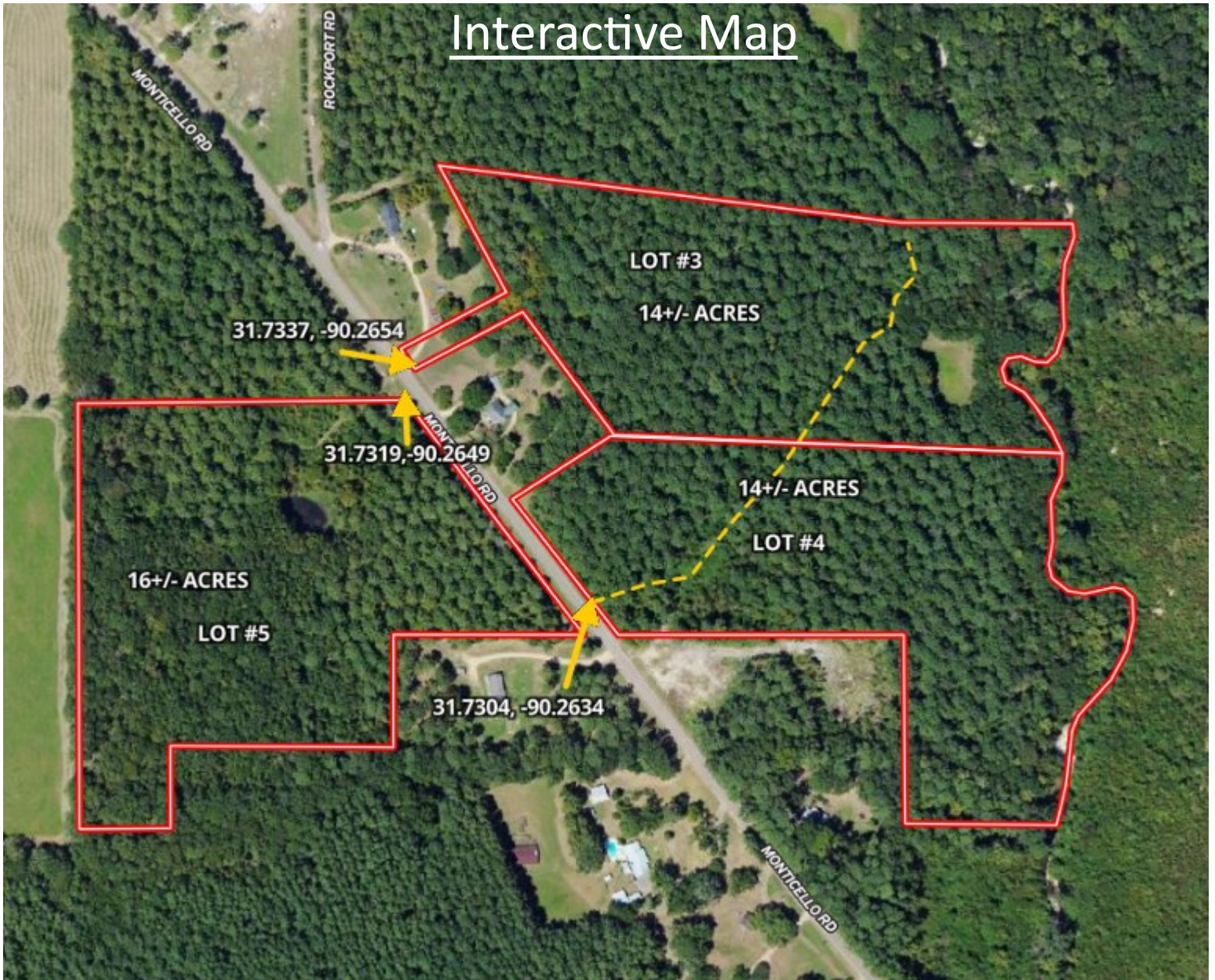
TomSmithLandandHomes.com

Information is believed to be accurate but not guaranteed.



Aerial Map

Interactive Map



CLIF CANNON

REALTOR®

Office: 601.990.5070

Cell: 601.565.1070

Clif@TomSmithLand.com



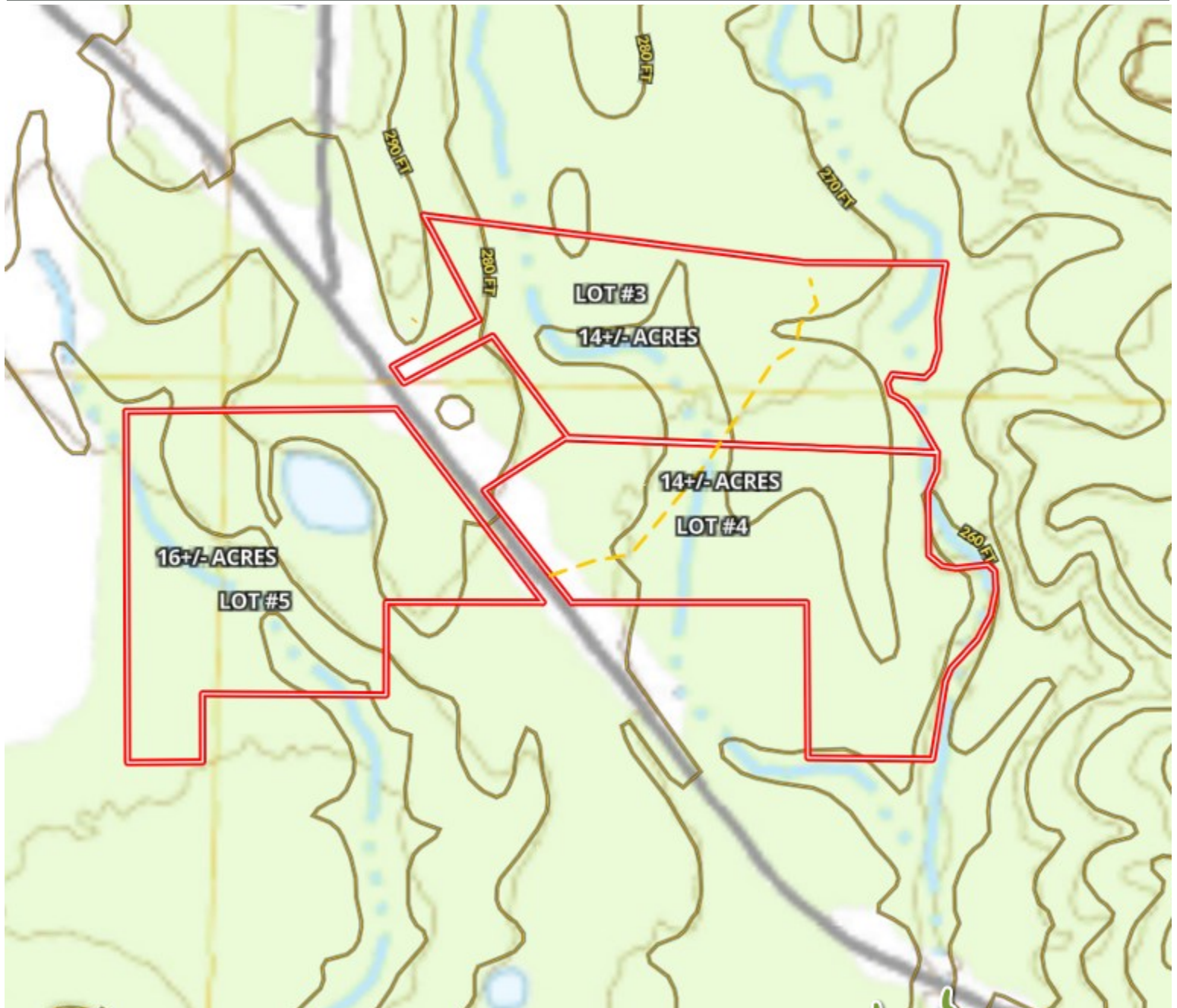
A Real Estate Expert You Can Trust

TomSmithLandandHomes.com

Information is believed to be accurate but not guaranteed.



Topographic Map



CLIF CANNON

REALTOR®

Office: 601.990.5070

Cell: 601.565.1070

Clif@TomSmithLand.com



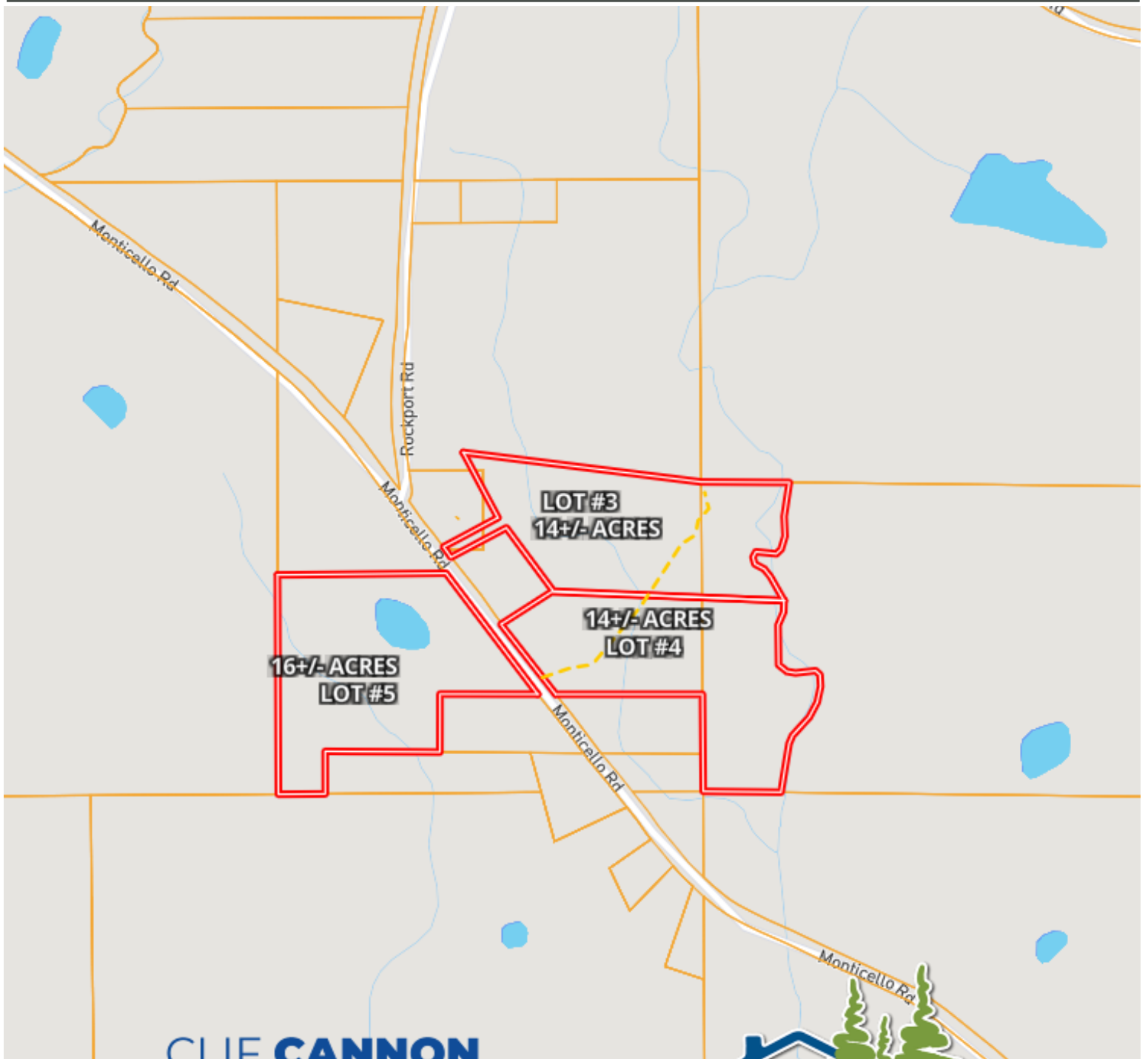
A Real Estate Expert You Can Trust

TomSmithLandandHomes.com

Information is believed to be accurate but not guaranteed.



Ownership Map



CLIF CANNON

REALTOR®

Office: 601.990.5070

Cell: 601.565.1070

Clif@TomSmithLand.com



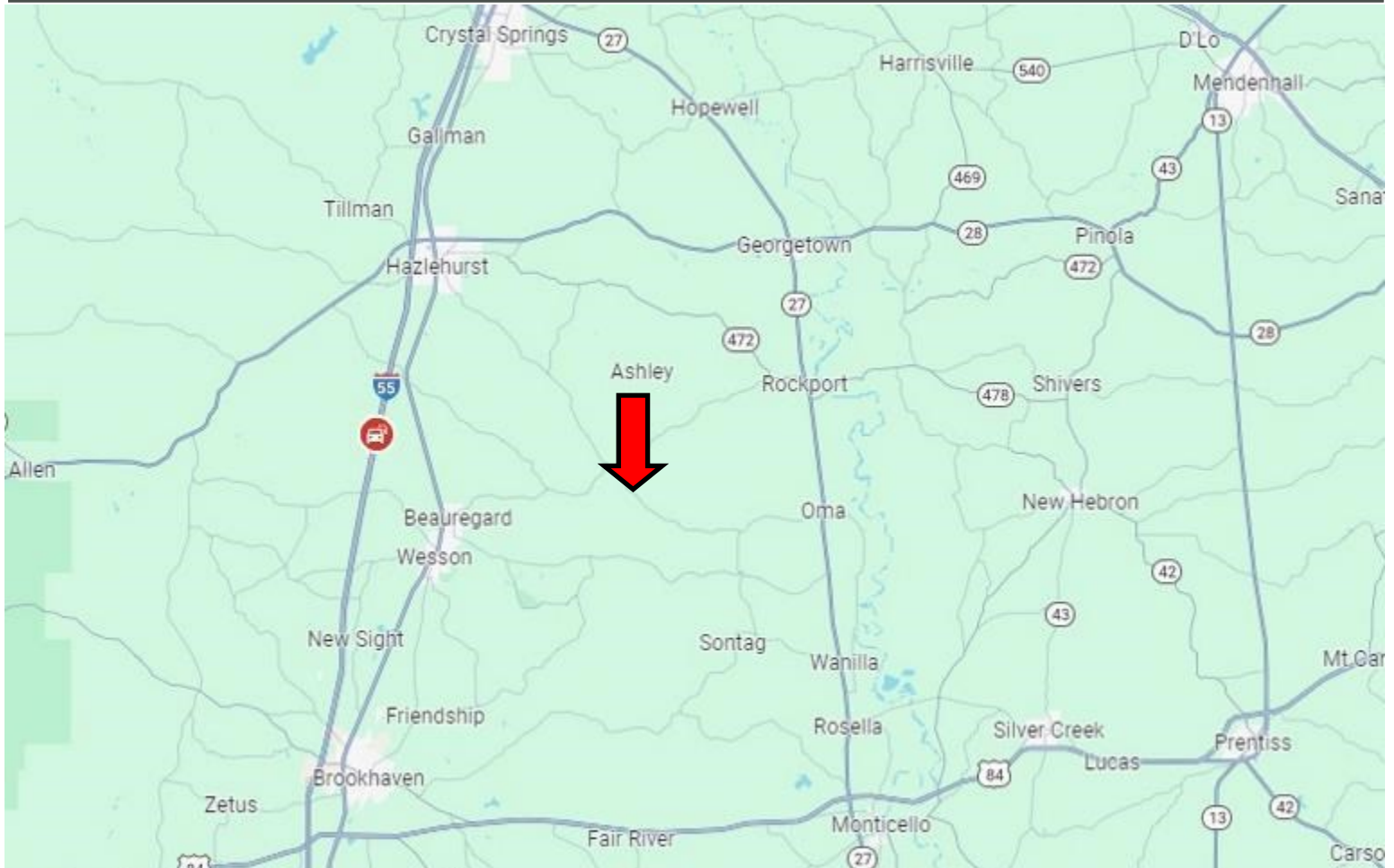
A Real Estate Expert You Can Trust

TomSmithLandandHomes.com

Information is believed to be accurate but not guaranteed.



Directional Map



Directions from the intersection of Sylvaena Road and I-55 in Wesson, MS: Take Exit 51 (Sylvaena Rd) and travel east on Sylvaena Road for 1.5 miles. Turn left onto Lowery Road and travel 1.7 miles. Turn right onto Hwy 51 and travel .2 miles. Turn left onto Bahala Road and travel .4 miles. Turn left onto Beaugard Road and travel 9.8 miles. Turn left onto Monticello Road and travel for .9 miles. Turn left to remain on Monticello Road and travel 1 miles The properties will be on both sides of the road.

[GOOGLE MAP LINK](#)



**CLIF
CANNON**
REALTOR®

Office: 601.990.5070

Cell: 601.565.1070

Clif@TomSmithLand.com



A Real Estate Expert You Can Trust

TomSmithLandandHomes.com

Information is believed to be accurate but not guaranteed.

