

8.61± ACRE HOMESITE IN THE BROWNING CREEK SUBDIVISION OF OKTIBBEHA COUNTY, MS



\$127,500

Are you looking to build your dream home in one of the most sought-after neighborhoods in Starkville, MS? Here's your chance! This 8.61+/- acre lot is one of the largest lots remaining in the Browning Creek subdivision of Oktibbeha County. The property is at the end of a dead-end road and offers ready-to-use utilities and fiber optic internet available. This neighborhood also allows exclusive access to a large private lake stocked with trophy bass, bream, crappie, and striped bass. If you are looking for a homesite with great neighbors and privacy, look no further than this lot! To schedule a private showing, call or text Walker!

Directions from Starkville, MS: From Starkville take Yellow Jacket Drive to South Montgomery Street for .6 miles. Then take Oktoc Road to Browning Creek Road for 8.8 miles. Continue on Browning Creek Road and take Lakeshore Drive to North Estates Drive/ North Estates for 2.1 miles. You will dead end into the property.

[Google Map Link](#)



**WALKER
TRANUM**
REALTOR®

Office: 662.268.6333

Cell: 662.769.1442

Walker@TomSmithHomes.com



A Real Estate Expert You Can Trust

TomSmithLandandHomes.com

Information is believed to be accurate but not guaranteed.

2011-2023
BEST
BROKERAGES



**WALKER
TRANUM**
REALTOR®

Office: 662.268.6333
Cell: 662.769.1442
Walker@TomSmithHomes.com



A Real Estate Expert You Can Trust
TomSmithLandandHomes.com

Information is believed to be accurate but not guaranteed.





**WALKER
TRANUM**
REALTOR®

Office: 662.268.6333
Cell: 662.769.1442
Walker@TomSmithHomes.com



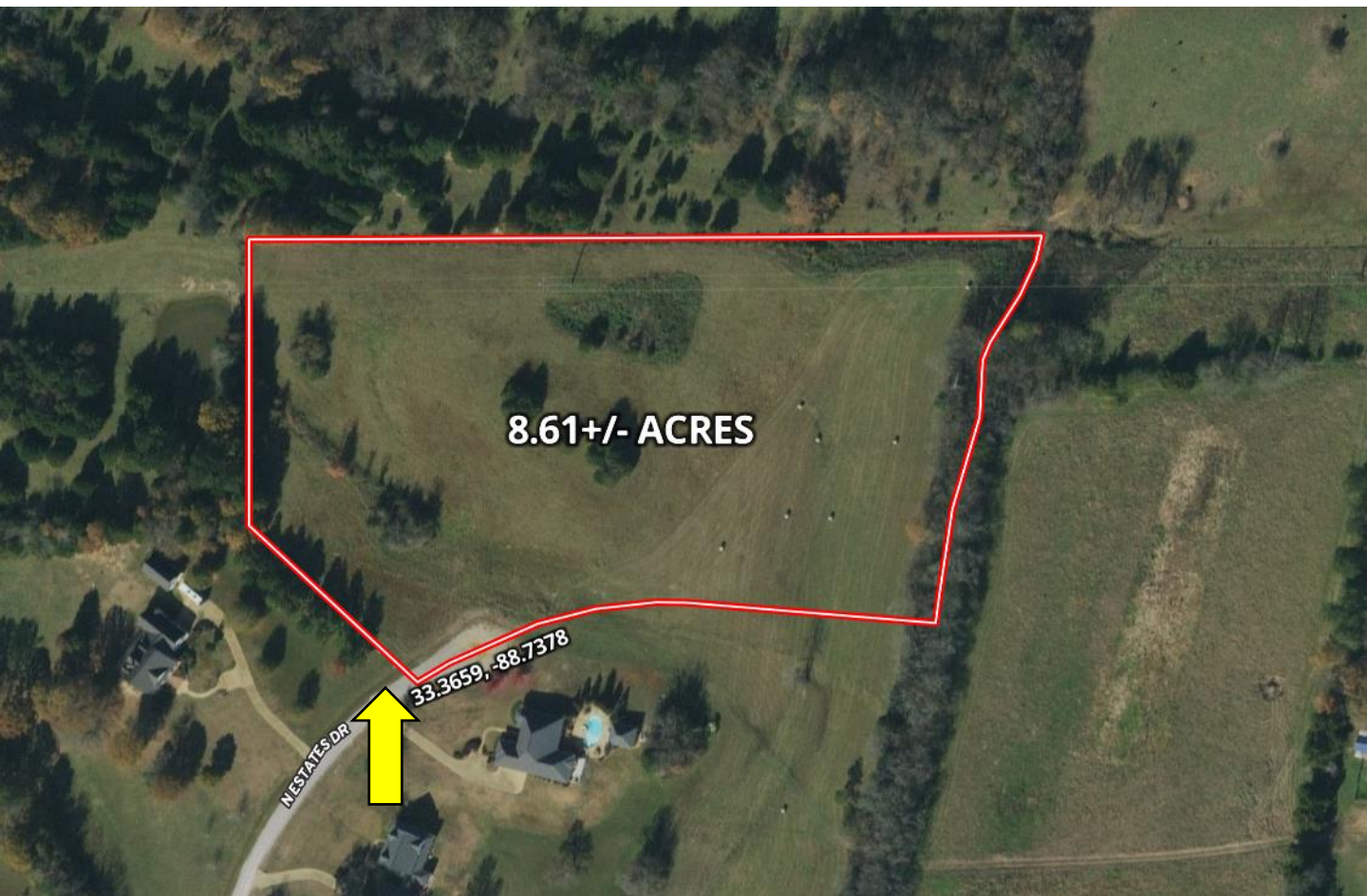
A Real Estate Expert You Can Trust

TomSmithLandandHomes.com

Information is believed to be accurate but not guaranteed.



Aerial Map



Click [Here](#) for an Interactive Map Link



**WALKER
TRANUM**
REALTOR®

Office: 662.268.6333
Cell: 662.769.1442

Walker@TomSmithHomes.com



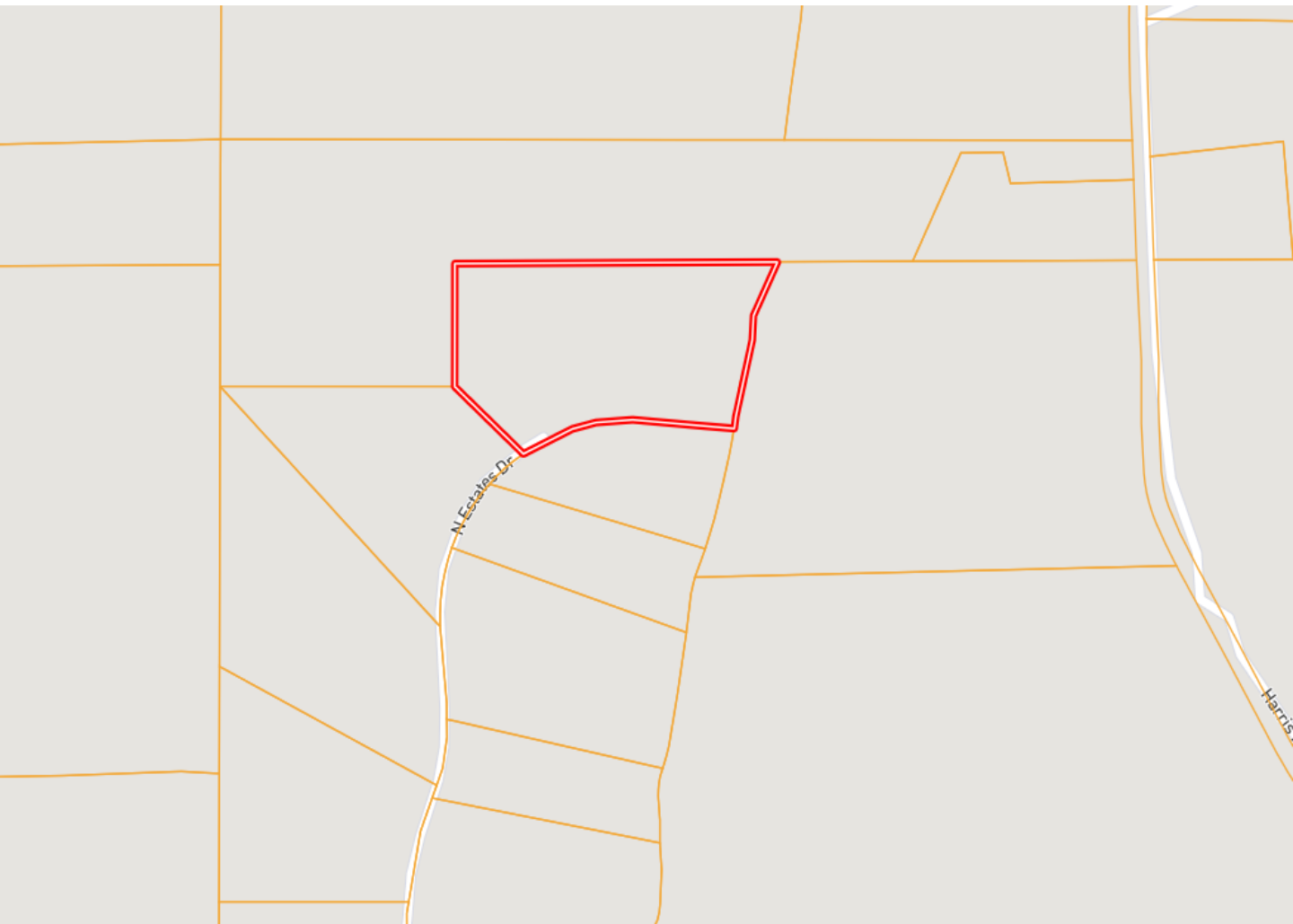
A Real Estate Expert You Can Trust

TomSmithLandandHomes.com

Information is believed to be accurate but not guaranteed.



Ownership Map



**WALKER
TRANUM**
REALTOR®

Office: 662.268.6333
Cell: 662.769.1442

Walker@TomSmithHomes.com



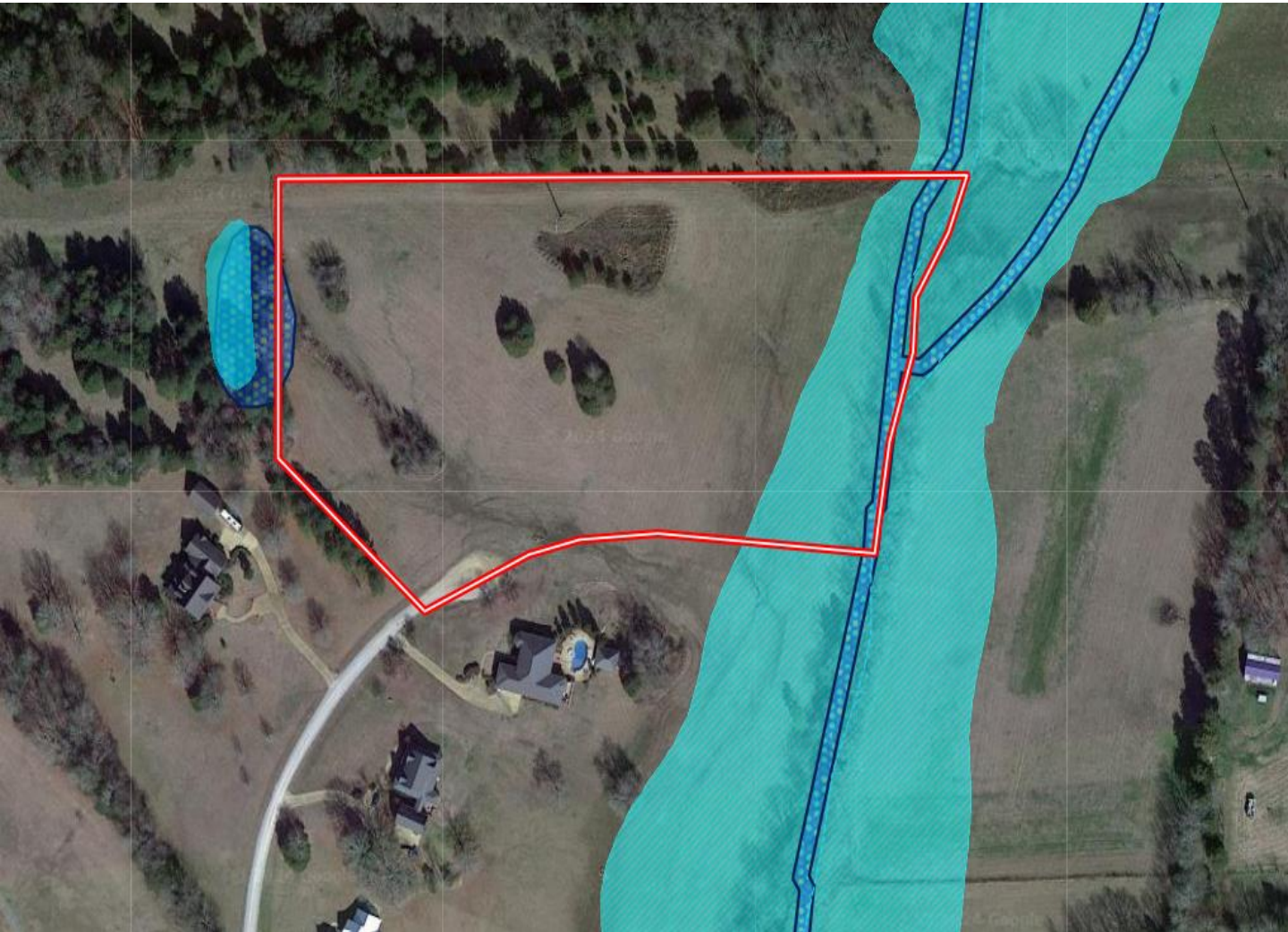
A Real Estate Expert You Can Trust

TomSmithLandandHomes.com

Information is believed to be accurate but not guaranteed.



Flood Map



**WALKER
TRANUM**
REALTOR®

Office: 662.268.6333
Cell: 662.769.1442

Walker@TomSmithHomes.com



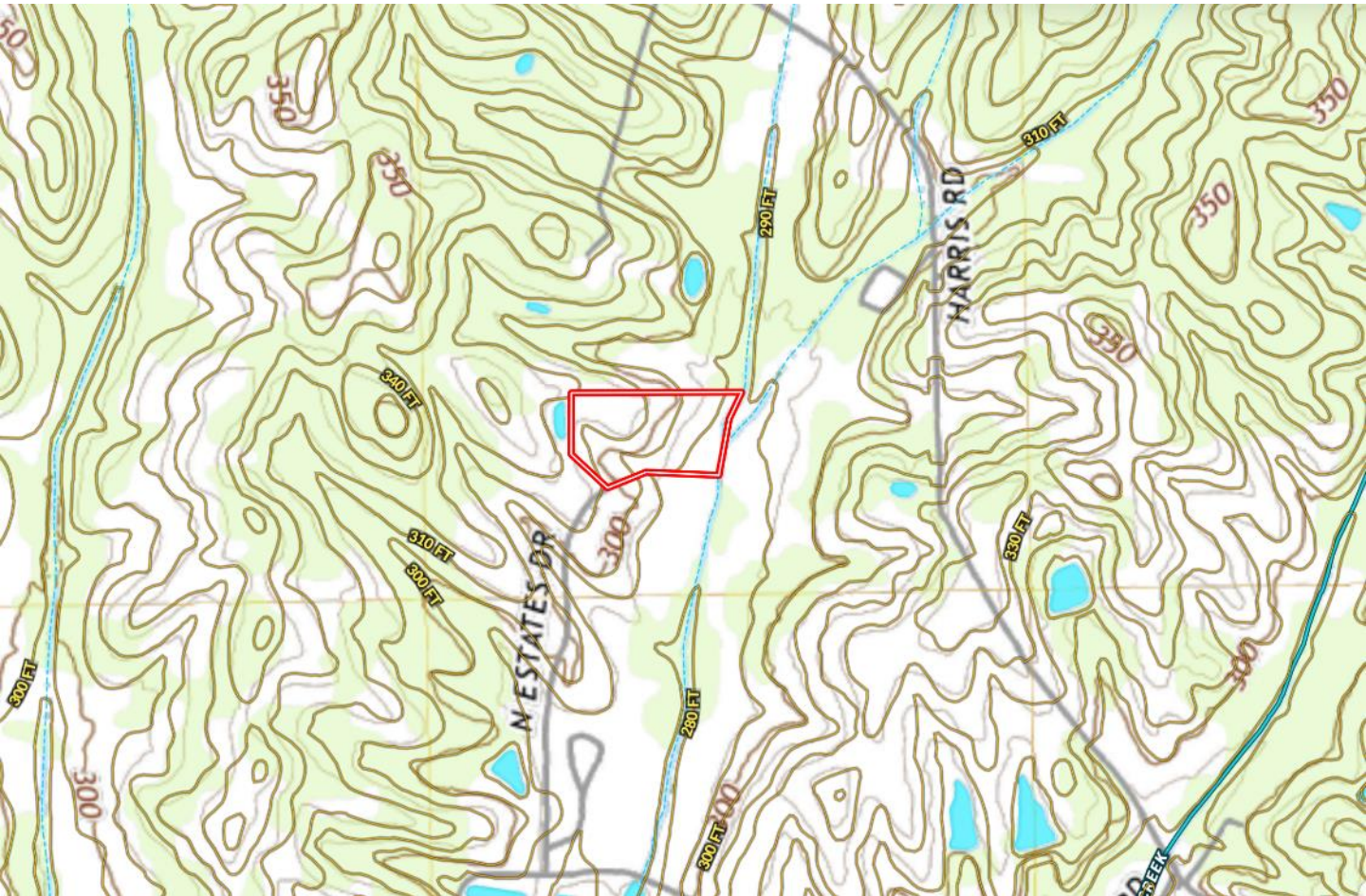
A Real Estate Expert You Can Trust

TomSmithLandandHomes.com

Information is believed to be accurate but not guaranteed.

2011-2023
BEST
BROKERAGES

Topography Map



**WALKER
TRANUM**
REALTOR®

Office: 662.268.6333
Cell: 662.769.1442

Walker@TomSmithHomes.com



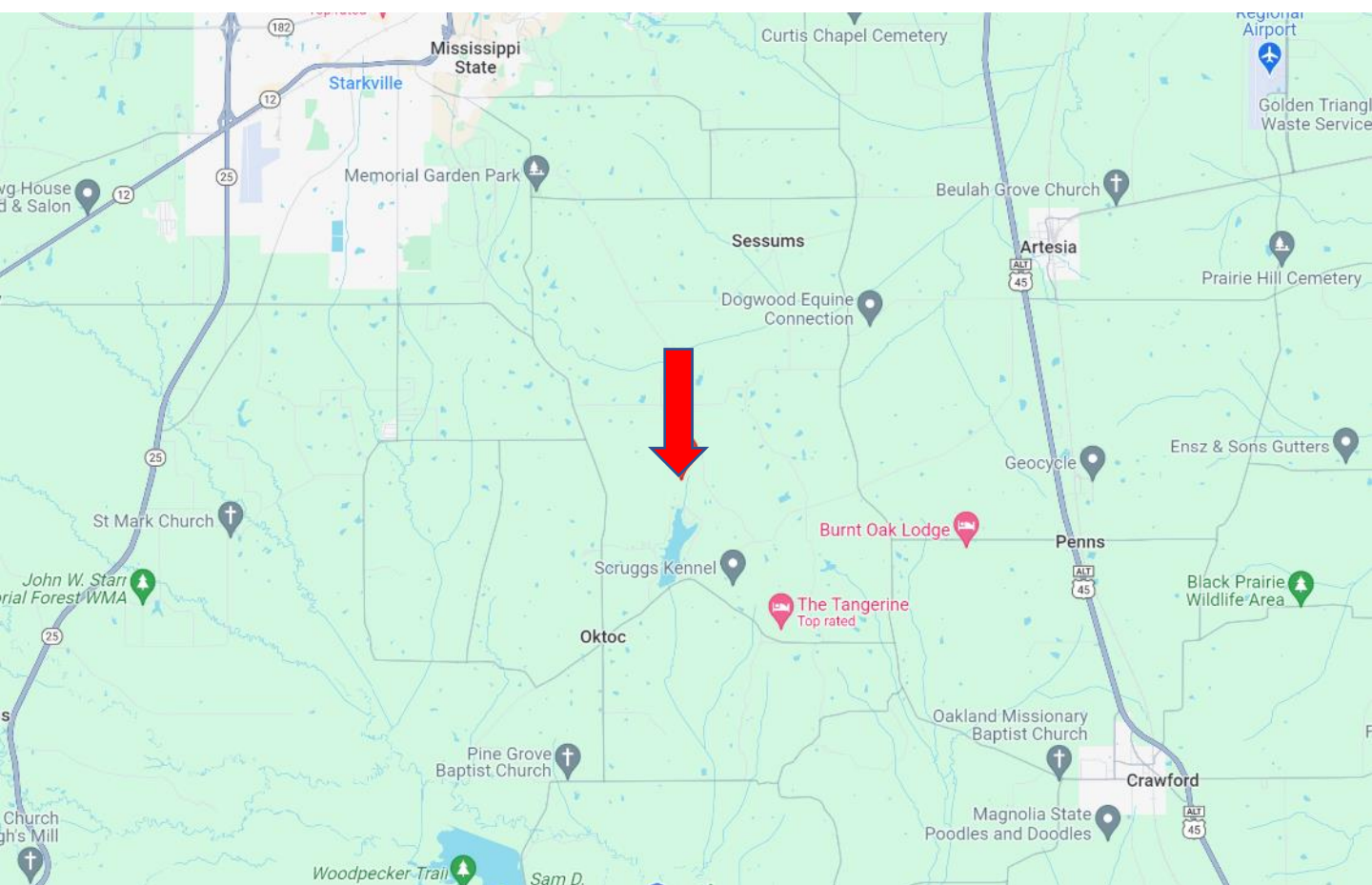
A Real Estate Expert You Can Trust

TomSmithLandandHomes.com

Information is believed to be accurate but not guaranteed.



Directional Map



Directions from Hwy 12 and Blackjack Road in Starkville, MS: Travel south on Blackjack Road for 1 mile. At the traffic circle, take the first exit onto Oktok Road. Travel 7.4 miles, then turn onto Browning Creek Road. Travel 0.8 miles, then turn left onto Lakeshore Drive. Travel .9 miles, then turn right onto North Estates Drive/North Estates. You will dead end into the property. [Google Map Link](#)



**WALKER
TRANUM**
REALTOR®

Office: 662.268.6333

Cell: 662.769.1442

Walker@TomSmithHomes.com



A Real Estate Expert You Can Trust

TomSmithLandandHomes.com

Information is believed to be accurate but not guaranteed.

