

14± ACRE HUNTING TRACT IN GRENADA COUNTY, MS



\$75,000

Have you been searching for a small acreage hunting property? This 14± acre tract in Grenada County is what you need! Located just 9.2 miles southwest of Grenada, MS, and 16 miles southwest of Grenada Lake, this property will accommodate your needs. The property consists primarily of hardwoods with hardwood bottoms that will produce plenty of food for the local wildlife, and an abundance of deer signs was noted during the initial inspection. A lock-on stand with climbing sticks will remain on the property.

You'll also have roughly 885 ft of gravel road frontage with power and water available. The entire property has been fenced for additional privacy. If you've been waiting on a small acreage hunting tract, call Kadero Edley to schedule your private viewing!



**KADERO
EDLEY**

REALTOR®

Office: 601.898.2772

Cell: 601.488.7000

Kadero@TomSmithLand.com



A Real Estate Expert You Can Trust

TomSmithLandandHomes.com

Information is believed to be accurate but not guaranteed.





KADERO EDLEY

REALTOR®

Office: 601.898.2772

Cell: 601.488.7000

Kadero@TomSmithLand.com



A Real Estate Expert You Can Trust

TomSmithLandandHomes.com

Information is believed to be accurate but not guaranteed.





KADERO EDLEY
REALTOR®

Office: 601.898.2772

Cell: 601.488.7000

Kadero@TomSmithLand.com



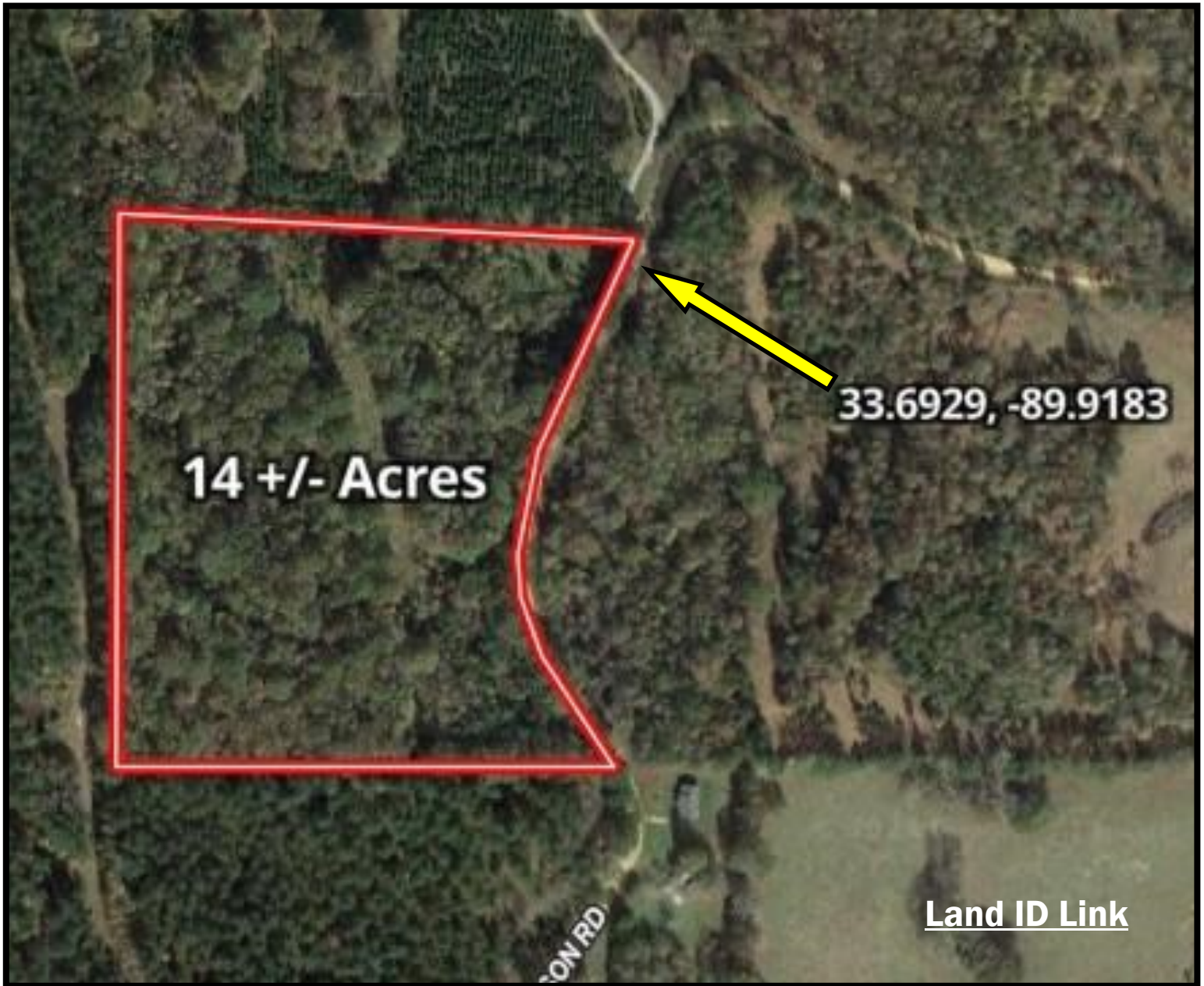
A Real Estate Expert You Can Trust

TomSmithLandandHomes.com

Information is believed to be accurate but not guaranteed.



Aerial Map



KADERO EDLEY
REALTOR®

Office: 601.898.2772

Cell: 601.488.7000

Kadero@TomSmithLand.com



A Real Estate Expert You Can Trust
TomSmithLandandHomes.com

Information is believed to be accurate but not guaranteed.



Ownership Map



KADERO EDLEY
REALTOR®

Office: 601.898.2772

Cell: 601.488.7000

Kadero@TomSmithLand.com



A Real Estate Expert You Can Trust
TomSmithLandandHomes.com

Information is believed to be accurate but not guaranteed.



Topography Map



KADERO EDLEY

REALTOR®

Office: 601.898.2772

Cell: 601.488.7000

Kadero@TomSmithLand.com



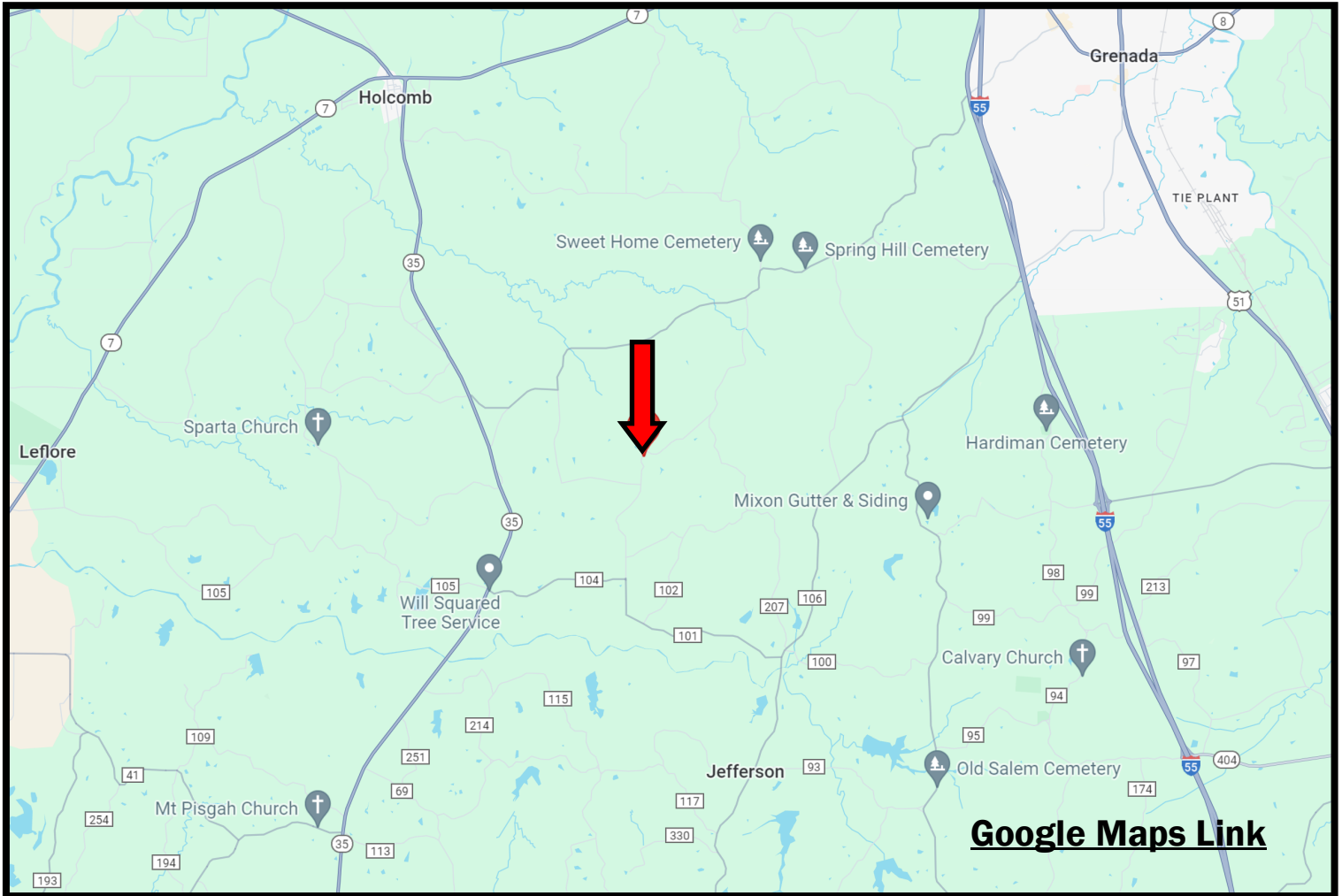
A Real Estate Expert You Can Trust

TomSmithLandandHomes.com

Information is believed to be accurate but not guaranteed.

The Broker
2011-2023
BEST
BROKERAGES

Directional Map



[Google Maps Link](#)

Directions from Hwy 8 in Grenada, MS: Travel east on Hwy 8 for 0.1 miles. Turn right onto Sweethome Rd. and travel 5.9 miles. Turn left onto Nason Rd. After 2.9 miles, the property will be on your right.



**KADERO
EDLEY**

REALTOR®

Office: 601.898.2772

Cell: 601.488.7000

Kadero@TomSmithLand.com



A Real Estate Expert You Can Trust

TomSmithLandandHomes.com

Information is believed to be accurate but not guaranteed.

