



**Commercial Building
on HWY 61 in
Cleveland, MS**

\$1,000,000



Address: 400 HWY 61 N., Cleveland, MS 38732

This 10,900± SF commercial building is located less than a quarter of a mile from the busy intersection of HWY 61 and HWY 8 in Cleveland, MS. With the location of this building, tenants are drawn to the high traffic count and visibility to potential customers. The lot also has 20,000± SF of concrete paving, providing ample parking for customers. Give Tracey Bell a call to schedule your private showing!



**TRACEY
BELL**

MANAGING BROKER

Office: 662.441.2500

Cell: 662.719.4720

Tracey@TomSmithLand.com



Expect More. Get More.

A Real Estate Expert You Can Trust

TomSmithLandandHomes.com

Information is believed to be accurate but not guaranteed.





**TRACEY
BELL**

MANAGING BROKER

Office: 662.441.2500

Cell: 662.719.4720

Tracey@TomSmithLand.com



A Real Estate Expert You Can Trust
TomSmithLandandHomes.com

Information is believed to be accurate but not guaranteed.

2011-2023
BEST
BROKERAGES



TRACEY BELL

MANAGING BROKER

Office: 662.441.2500

Cell: 662.719.4720

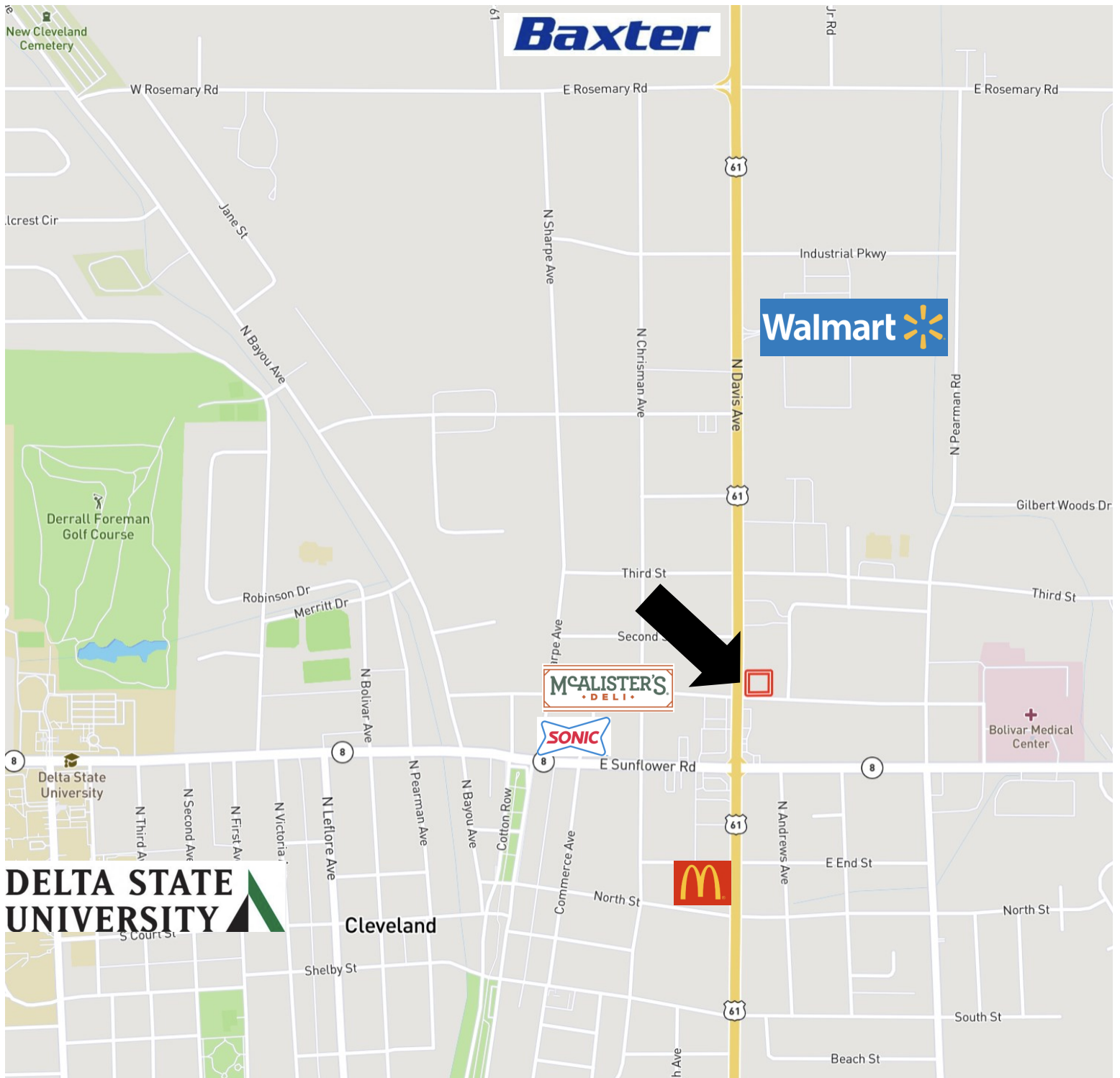
Tracey@TomSmithLand.com



A Real Estate Expert You Can Trust
TomSmithLandandHomes.com

Information is believed to be accurate but not guaranteed.





**TRACEY
BELL**

MANAGING BROKER

Office: 662.441.2500

Cell: 662.719.4720

Tracey@TomSmithLand.com



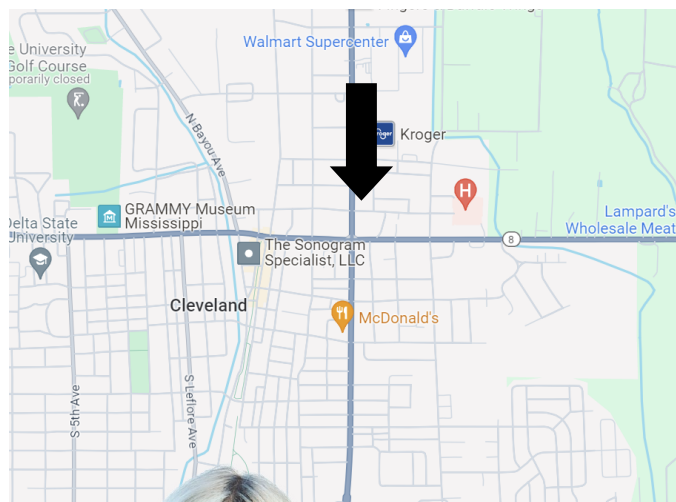
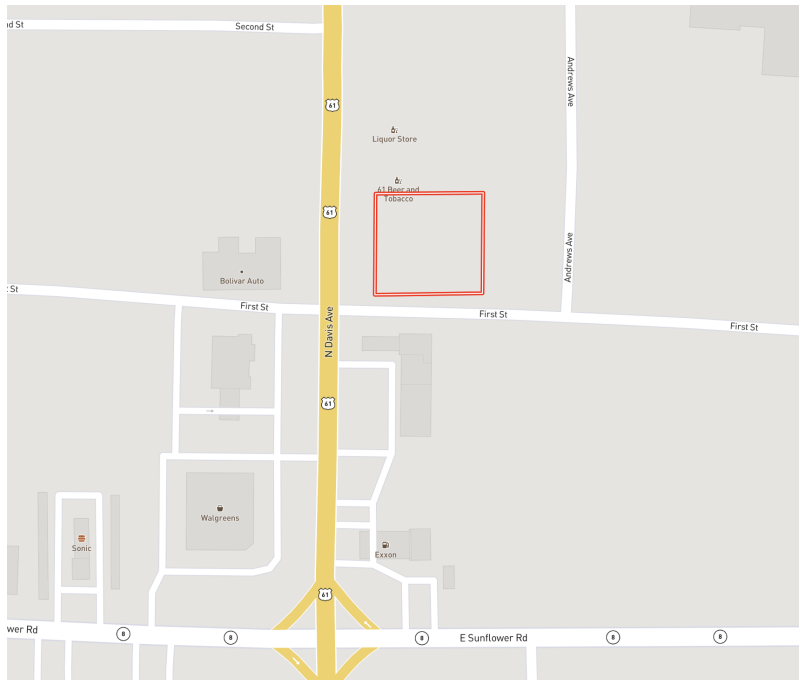
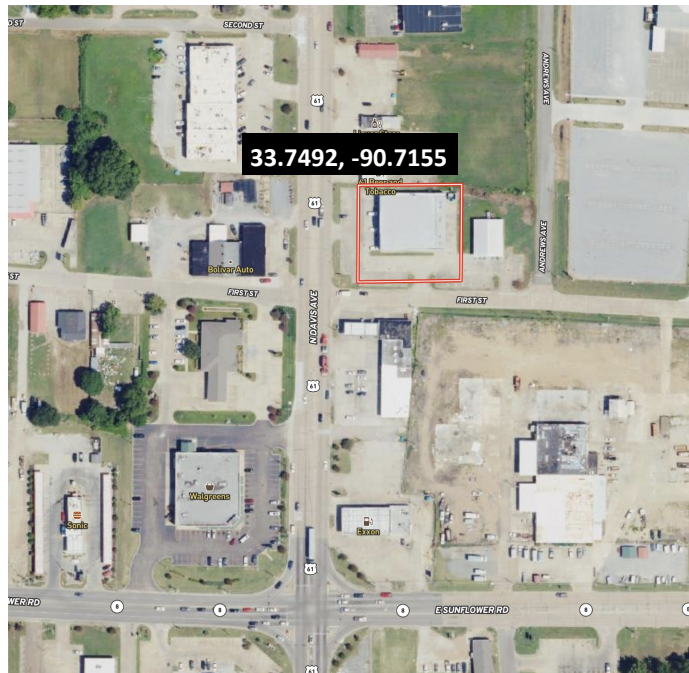
A Real Estate Expert You Can Trust

TomSmithLandandHomes.com

Information is believed to be accurate but not guaranteed.



MAPS



[Click for Interactive Map](#)

Address: 400 HWY 61 N, Cleveland, MS

Directions from the intersection of HWY 8 and HWY 61 in Cleveland, MS: Travel north on HWY 61 toward Clarksdale for approximately 0.1 miles, and the destination will be on the right.

[Google Maps Link.](#)

**TRACEY
BELL**

MANAGING BROKER

Office: 662.441.2500

Cell: 662.719.4720

Tracey@TomSmithLand.com



Expect More. Get More.

A Real Estate Expert You Can Trust

TomSmithLandandHomes.com

Information is believed to be accurate but not guaranteed.

