

2.2 ± ACRE HOMESITE IN THE BROWNING CREEK SUBDIVISION OF OKTIBBEHA COUNTY, MS



\$90,000

Are you looking to build your dream home in one of the most sought-after neighborhoods in Starkville, MS? Here's your chance! This 2.2+/- acre lot is one of the last lots remaining with a waterfront view in the Browning Creek subdivision of Oktibbeha County. The property is on the lake's least developed side, giving excellent privacy without sacrificing the view. It also offers ready-to-use utilities and fiber optic internet. This neighborhood also allows exclusive access to a large private lake stocked with trophy bass, bream, crappie, and striped bass. If you are looking for a homesite with great neighbors and privacy, look no further than this lot! To schedule a private showing, call or text Walker!

Directions from Hwy 12 and Blackjack Road in Starkville, MS: Travel south on Blackjack Road for 1 mile.

At the traffic circle, take the first exit onto Oktok Road. Travel 7.4 miles, then turn onto Browning Creek Road. Travel 0.8 miles, then turn left onto Lakeshore Drive. After 1.4 miles, the property will be on your left.

[Google Map Link](#)



**WALKER
TRANUM**
REALTOR®

Office: 662.268.6333

Cell: 662.769.1442

Walker@TomSmithHomes.com

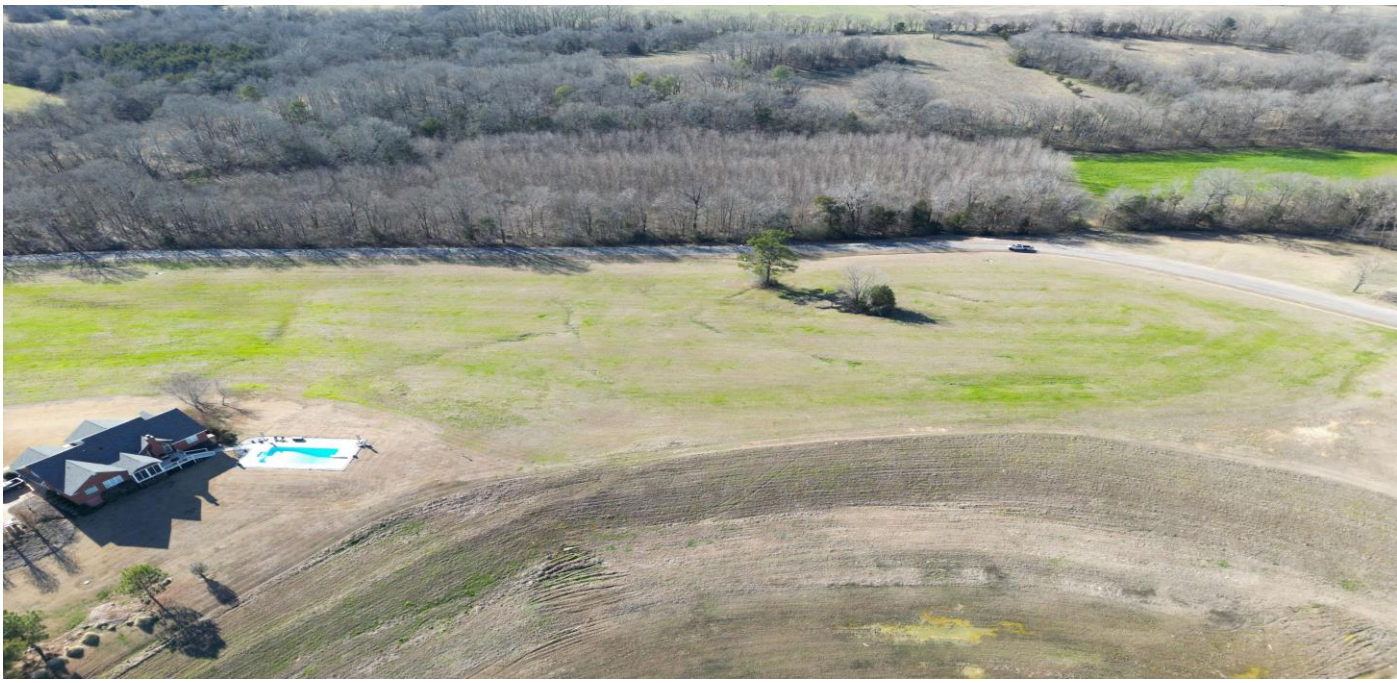


A Real Estate Expert You Can Trust

TomSmithLandandHomes.com

Information is believed to be accurate but not guaranteed.

Entrepreneur
2011-2023
BEST
BROKERAGES



**WALKER
TRANUM**
REALTOR®

Office: 662.268.6333
Cell: 662.769.1442
Walker@TomSmithHomes.com



A Real Estate Expert You Can Trust
TomSmithLandandHomes.com

Information is believed to be accurate but not guaranteed.



Aerial Map



Click [Here](#) for an Interactive Map Link



**WALKER
TRANUM**
REALTOR®

Office: 662.268.6333
Cell: 662.769.1442

Walker@TomSmithHomes.com



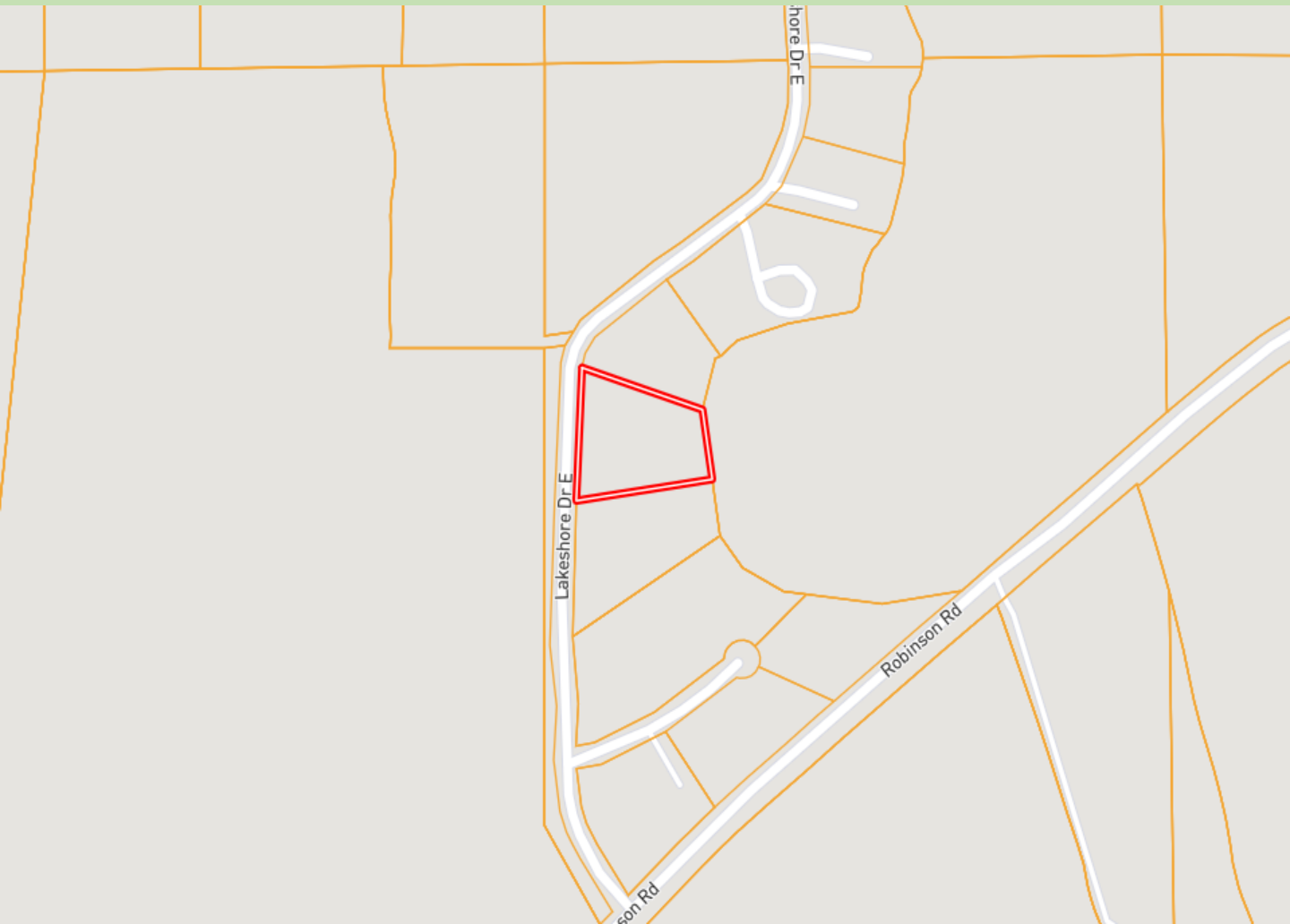
A Real Estate Expert You Can Trust

TomSmithLandandHomes.com

Information is believed to be accurate but not guaranteed.

2011-2023
BEST
BROKERAGES

Ownership Map



**WALKER
TRANUM**
REALTOR®

Office: 662.268.6333
Cell: 662.769.1442

Walker@TomSmithHomes.com



A Real Estate Expert You Can Trust

TomSmithLandandHomes.com

Information is believed to be accurate but not guaranteed.



Topo Map



**WALKER
TRANUM**
REALTOR®

Office: 662.268.6333
Cell: 662.769.1442

Walker@TomSmithHomes.com



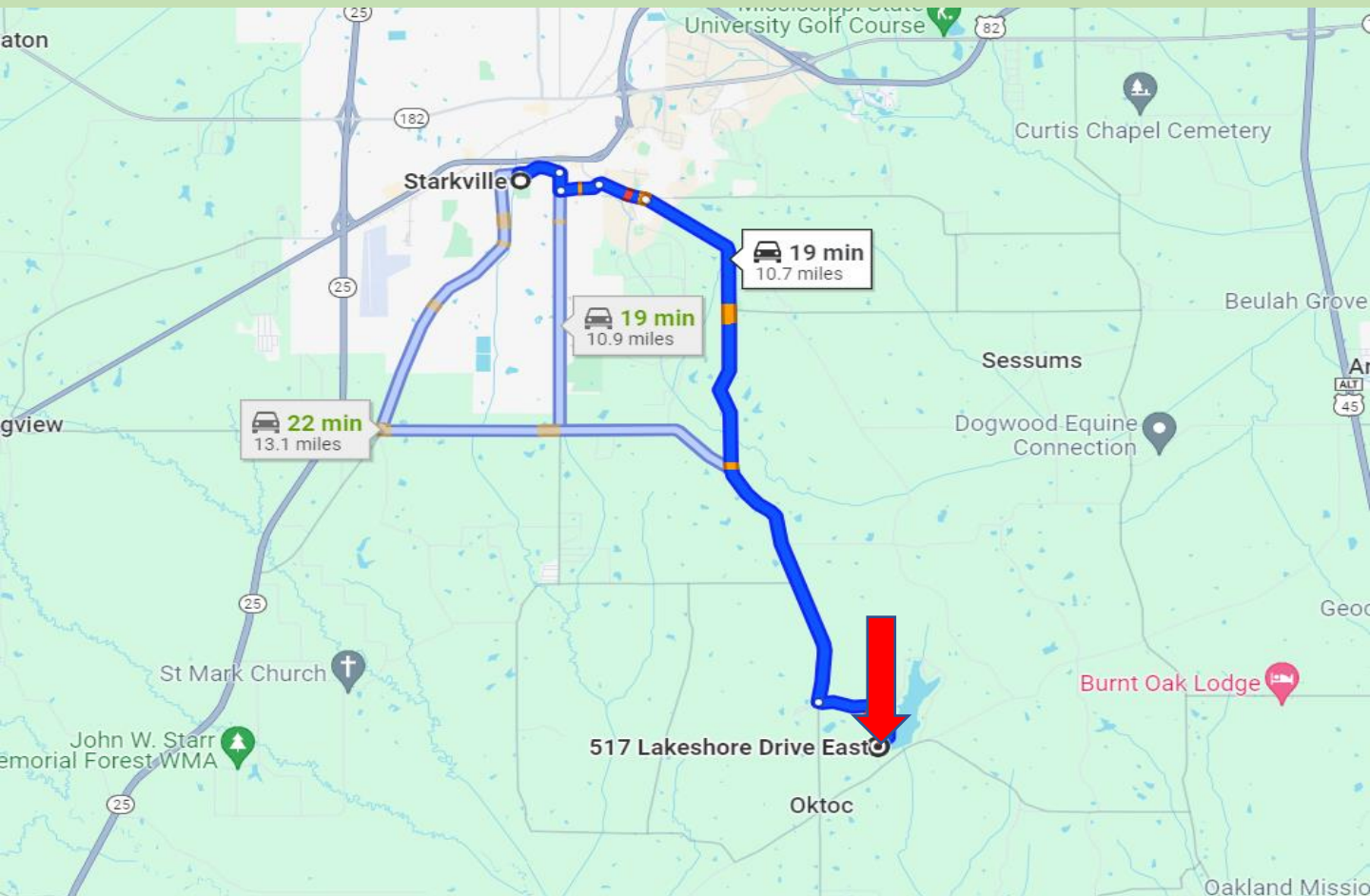
A Real Estate Expert You Can Trust

TomSmithLandandHomes.com

Information is believed to be accurate but not guaranteed.



Directional Map



Directions from Hwy 12 and Blackjack Road in Starkville, MS: Travel south on Blackjack Road for 1 mile. At the traffic circle, take the first exit onto Oktok Road. Travel 7.4 miles, then turn onto Browning Creek Road. Travel 0.8 miles, then turn left onto Lakeshore Drive. After 1.4 miles, the property will be on your left.

[Google Map Link](#)



**WALKER
TRANUM**
REALTOR®

Office: 662.268.6333
Cell: 662.769.1442

Walker@TomSmithHomes.com



A Real Estate Expert You Can Trust

TomSmithLandandHomes.com

Information is believed to be accurate but not guaranteed.

