

# 2.3 ± ACRE HOMESITE IN THE BROWNING CREEK SUBDIVISION OF OKTIBBEHA COUNTY, MS

## \$85,000



Are you looking to build your dream home in one of the most sought-after neighborhoods in Starkville, MS? Here's your chance! This 2.3+/- acre lot is one of the last lots remaining with a waterfront view in the Browning Creek subdivision of Oktibbeha County. The property is on the least developed side of the lake giving great privacy, without sacrificing on a view. It also offers ready-to-use utilities and fiber optic internet. This neighborhood also allows exclusive access to a large private lake stocked with trophy bass, bream, crappie, and striped bass. If you are looking for a homesite with great neighbors and privacy, look no further than this lot! To schedule a private showing, call or text Walker!

**Directions from Starkville, MS:** From Starkville take Yellow Jacket Drive to South Montgomery Street for .6 miles. Then take Oktoc Road to Browning Creek Road for 8.8 miles. Continue on Browning Creek Road and take Lakeshore Drive West for 1.4 miles and the property will be on your left.

[Google Map Link](#)



**WALKER  
TRANUM**  
REALTOR®

Office: 662.268.6333  
Cell: 662.769.1442

Walker@TomSmithHomes.com



**A Real Estate Expert You Can Trust**

TomSmithLandandHomes.com

Information is believed to be accurate but not guaranteed.

2011-2023  
**BEST**  
BROKERAGES





**WALKER  
TRANUM**  
REALTOR®

Office: 662.268.6333

Cell: 662.769.1442

Walker@TomSmithHomes.com



**A Real Estate Expert You Can Trust**

TomSmithLandandHomes.com

Information is believed to be accurate but not guaranteed.

Entrepreneur  
2011-2023  
BEST  
BROKERAGES



# Aerial Map



Click [Here](#) for an Interactive Map Link



**WALKER  
TRANUM**  
REALTOR®

Office: 662.268.6333  
Cell: 662.769.1442

Walker@TomSmithHomes.com



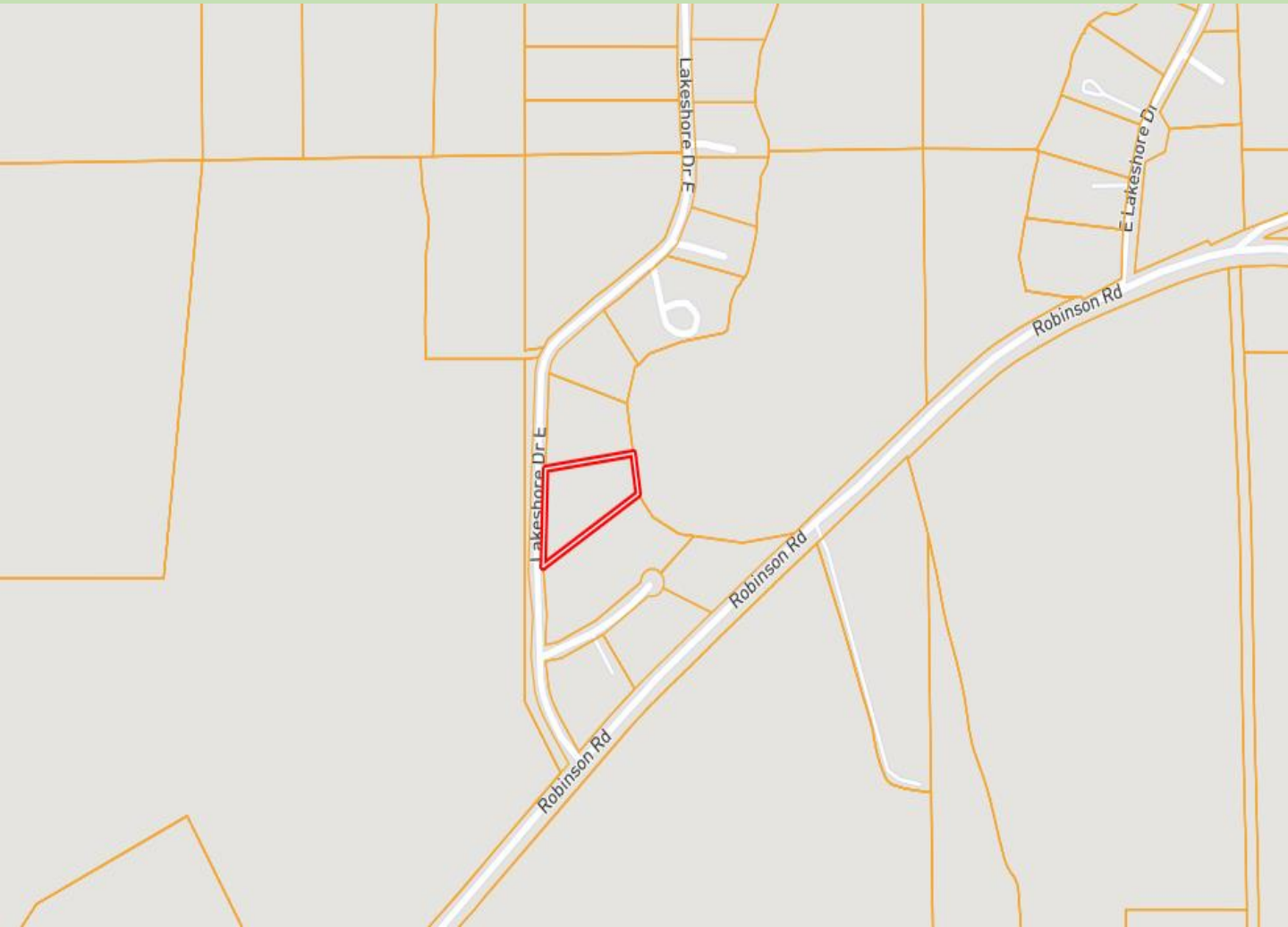
**A Real Estate Expert You Can Trust**

TomSmithLandandHomes.com

Information is believed to be accurate but not guaranteed.



# Ownership Map



**WALKER  
TRANUM**  
REALTOR®

Office: 662.268.6333  
Cell: 662.769.1442

Walker@TomSmithHomes.com



**A Real Estate Expert You Can Trust**

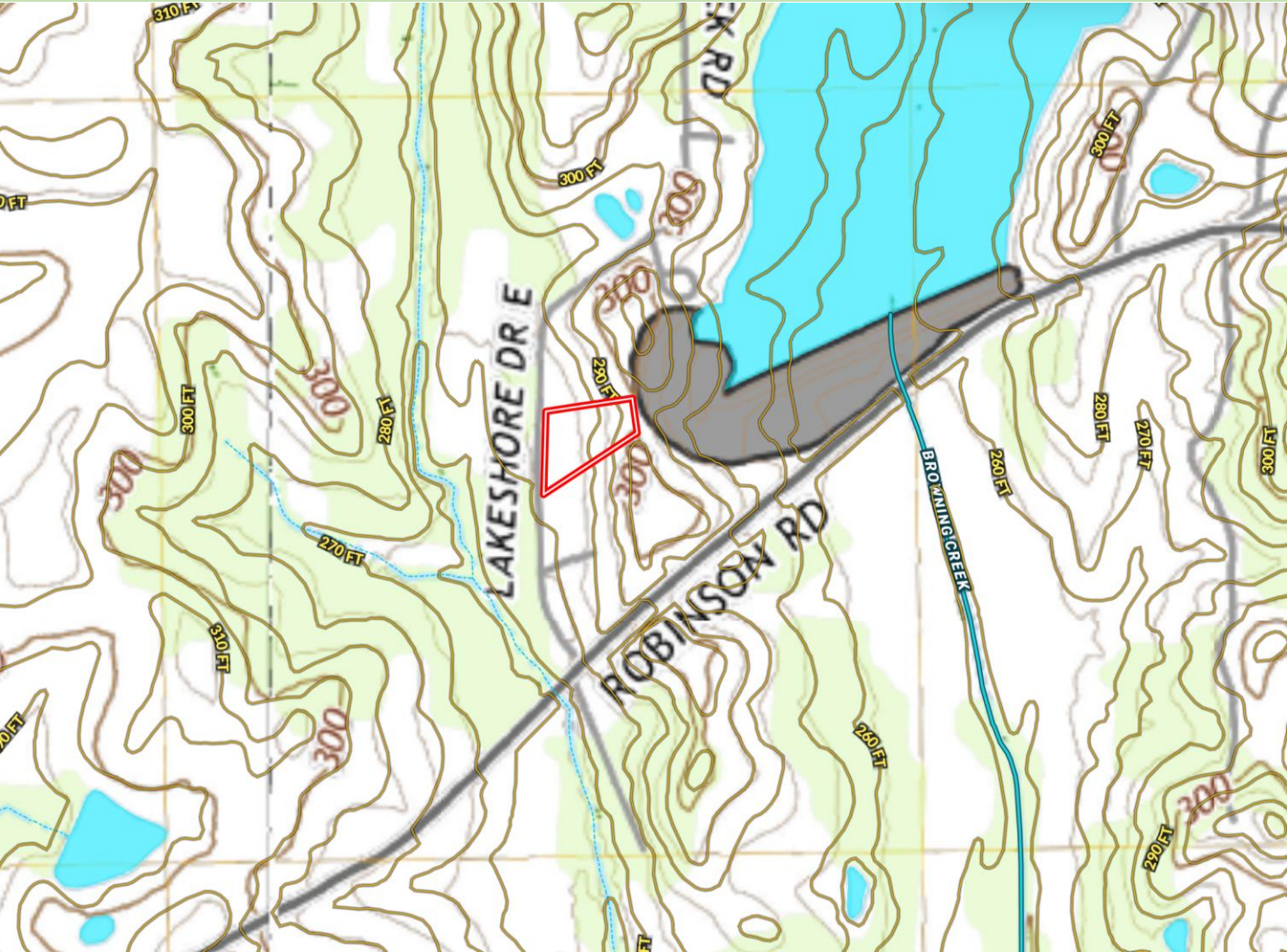
TomSmithLandandHomes.com

Information is believed to be accurate but not guaranteed.





# Topo Map



**WALKER  
TRANUM**  
REALTOR®

Office: 662.268.6333  
Cell: 662.769.1442

Walker@TomSmithHomes.com



**A Real Estate Expert You Can Trust**

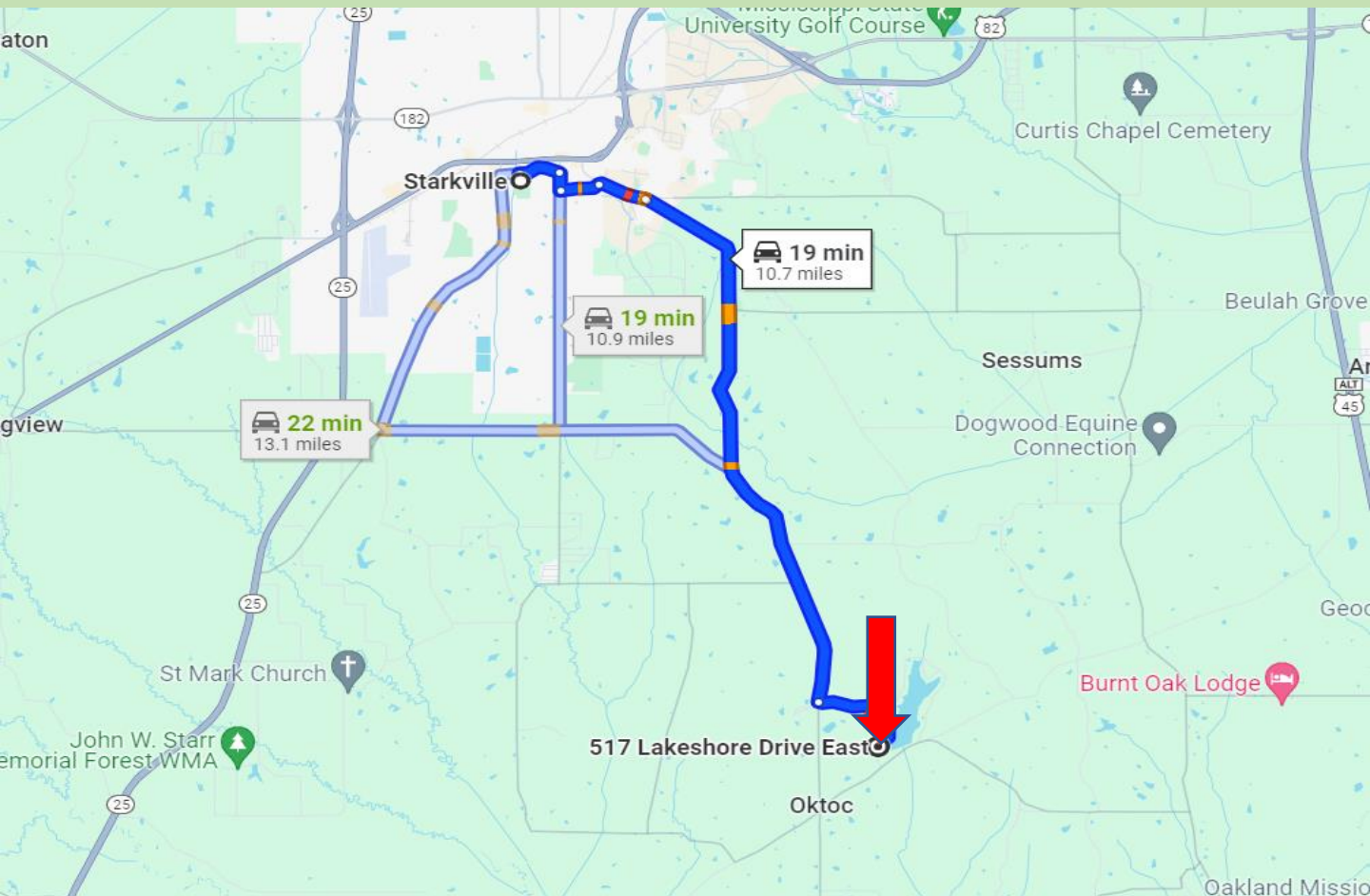
TomSmithLandandHomes.com

Information is believed to be accurate but not guaranteed.





# Directional Map



**Directions from Starkville, MS:** From Starkville take Yellow Jacket Drive to South Montgomery Street for .6 miles. Then take Oktoc Road to Browning Creek Road for 8.8 miles. Continue on Browning Creek Road and take Lakeshore Drive West for 1.4 miles and the property will be on your left.

[Google Map Link](#)



**WALKER  
TRANUM**  
REALTOR®

Office: 662.268.6333  
Cell: 662.769.1442

Walker@TomSmithHomes.com



**A Real Estate Expert You Can Trust**

TomSmithLandandHomes.com

Information is believed to be accurate but not guaranteed.

