

Charming Home in Holmes County, MS

2877 Ebenezer Road Ebenezer, MS 39095



\$269,000



- 4 Bed/3 Bath Home on 4.3± Acres
- 3254 SF Heated and Cooled
- Hardwood/Ceramic Tile /Carpet Flooring
- 40x60 Metal Shed
- Attached Two-Car Garage
- Detached Two-Car Garage
- Two Portable Storage Buildings

Directions from Hwy 14 and I-55 in Holmes County, MS: Take exit 146 to merge onto Hwy 14 and travel 1.5 miles. Turn left onto Hwy 14/Hwy 17 and travel .5 miles. Turn right onto Hwy 14 and travel 6.2 miles to Ebenezer. Turn left on Ebenezer Rd and travel .3 miles. The property will be on your right. GPS: 32.9662, -90.0923 [GOOGLE MAP LINK](#)



**SAM
SAMPLE**
REALTOR®

Office: 601.898.2772

Cell: 601.668.5697

Sam@TomSmithLand.com



A Real Estate Expert You Can Trust

TomSmithLandandHomes.com

Information is believed to be accurate but not guaranteed.



2877 Ebenezer Rd. Lexington, MS 39095

This Holmes County home offers the best of both worlds - the old's charm and the new's convenience. If you have been considering a home in the country, consider this home situated on 4.3+/- acres located in Ebenezer. The home is 3254 SF and has four bedrooms, three baths, and a two-car garage at the rear of the home with storage rooms in the garage. A large den at the lower rear entrance is one of several focal points. The den has surround sound for entertaining, gas logs for ambiance, bookshelves for your favorite books, formal dining, a full bath, and an adjoining private office. Walk up the hardwood staircase to a warm kitchen with a granite island and counters, double oven, dishwasher, breakfast nook, and enclosed laundry room. A cozy sitting area off the kitchen offers adults an area for conversation, studying for kids, or reading. The main entrance has a beautiful front porch that reflects the charm of the old, original stained glass windows facing the street and a grand hallway at the front door. This area has many uses and is accented with transom windows over all the doors, including three bedrooms.

Two of the bedrooms have private baths. The floors are carpet in bedrooms, hardwood in the kitchen area, small den, hall and laundry area. The property has plenty of storage inside and out. A 60x40 metal shed can hold all your equipment from campers, boats, ATVs, and tractors. A detached two-car garage provides additional secure storage and the maximum secure storage of a 40' shipping container. The property has two portable storage buildings with power connections. This property is within 50 miles of the Metro-Jackson area and about 8 miles from I-55 access. All showings will require prior notice since the home is currently occupied. Call Sam Sample to schedule your private showing!

SAM SAMPLE

REALTOR®

Office: 601.898.2772

Cell: 601.668.5697

Sam@TomSmithLand.com



A Real Estate Expert You Can Trust

TomSmithLandandHomes.com

Information is believed to be accurate but not guaranteed.





SAM SAMPLE

REALTOR®

Office: 601.898.2772

Cell: 601.668.5697

Sam@TomSmithLand.com



A Real Estate Expert You Can Trust

TomSmithLandandHomes.com

Information is believed to be accurate but not guaranteed.





SAM SAMPLE

REALTOR®

Office: 601.898.2772

Cell: 601.668.5697

Sam@TomSmithLand.com



A Real Estate Expert You Can Trust

TomSmithLandandHomes.com

Information is believed to be accurate but not guaranteed.





SAM SAMPLE

REALTOR®

Office: 601.898.2772

Cell: 601.668.5697

Sam@TomSmithLand.com



A Real Estate Expert You Can Trust

TomSmithLandandHomes.com

Information is believed to be accurate but not guaranteed.





SAM SAMPLE

REALTOR®

Office: 601.898.2772

Cell: 601.668.5697

Sam@TomSmithLand.com



A Real Estate Expert You Can Trust

TomSmithLandandHomes.com

Information is believed to be accurate but not guaranteed.





AERIAL MAP

[CLICK HERE FOR AN INTERACTIVE MAP](#)

SAM SAMPLE

REALTOR®

Office: 601.898.2772

Cell: 601.668.5697

Sam@TomSmithLand.com

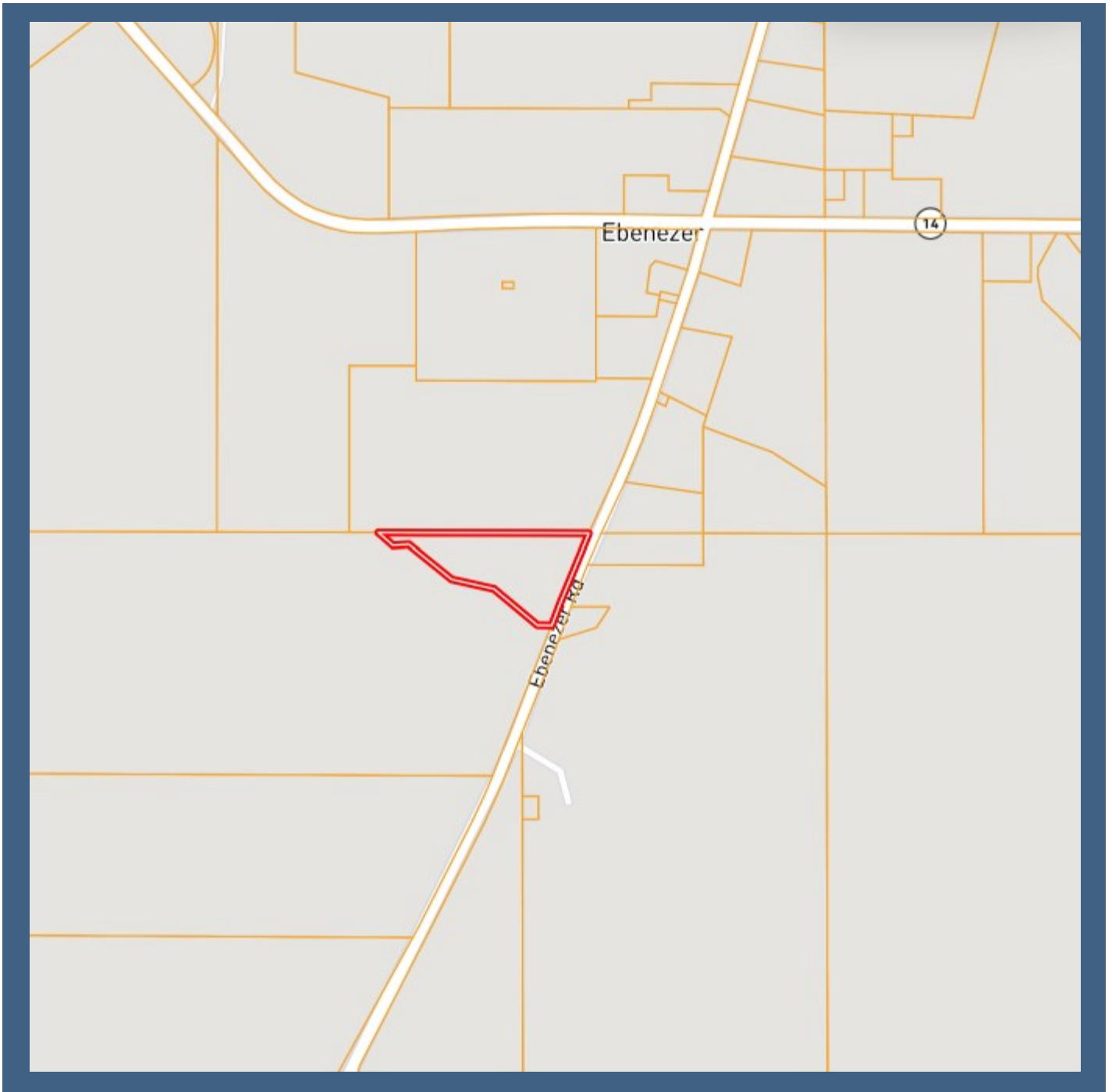


A Real Estate Expert You Can Trust

TomSmithLandandHomes.com

Information is believed to be accurate but not guaranteed.





OWNERSHIP MAP

SAM SAMPLE

REALTOR®

Office: 601.898.2772

Cell: 601.668.5697

Sam@TomSmithLand.com

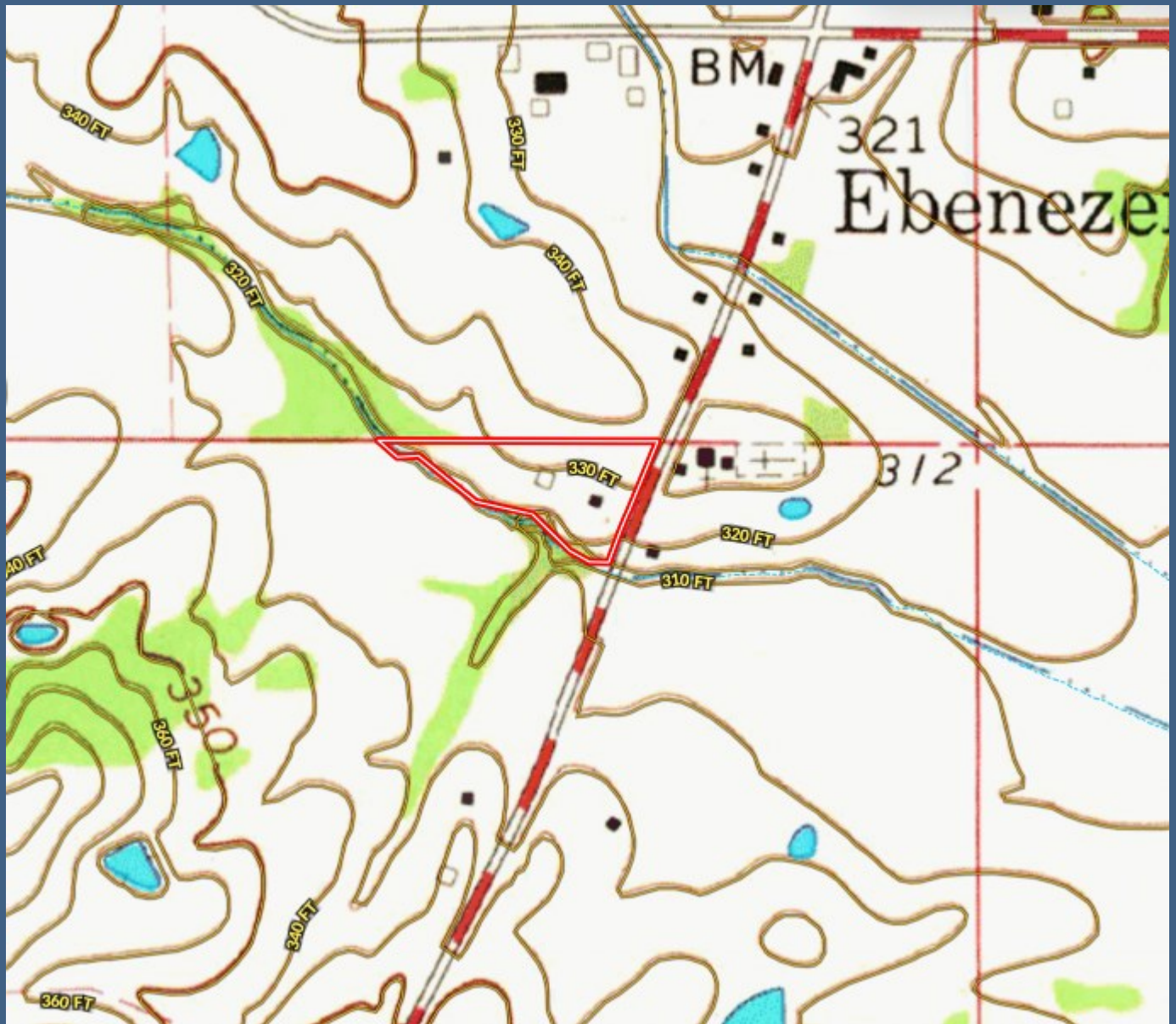


A Real Estate Expert You Can Trust

TomSmithLandandHomes.com

Information is believed to be accurate but not guaranteed.

2011-2023
BEST
BROKERAGES



Topo Map

SAM SAMPLE

REALTOR®

Office: 601.898.2772

Cell: 601.668.5697

Sam@TomSmithLand.com

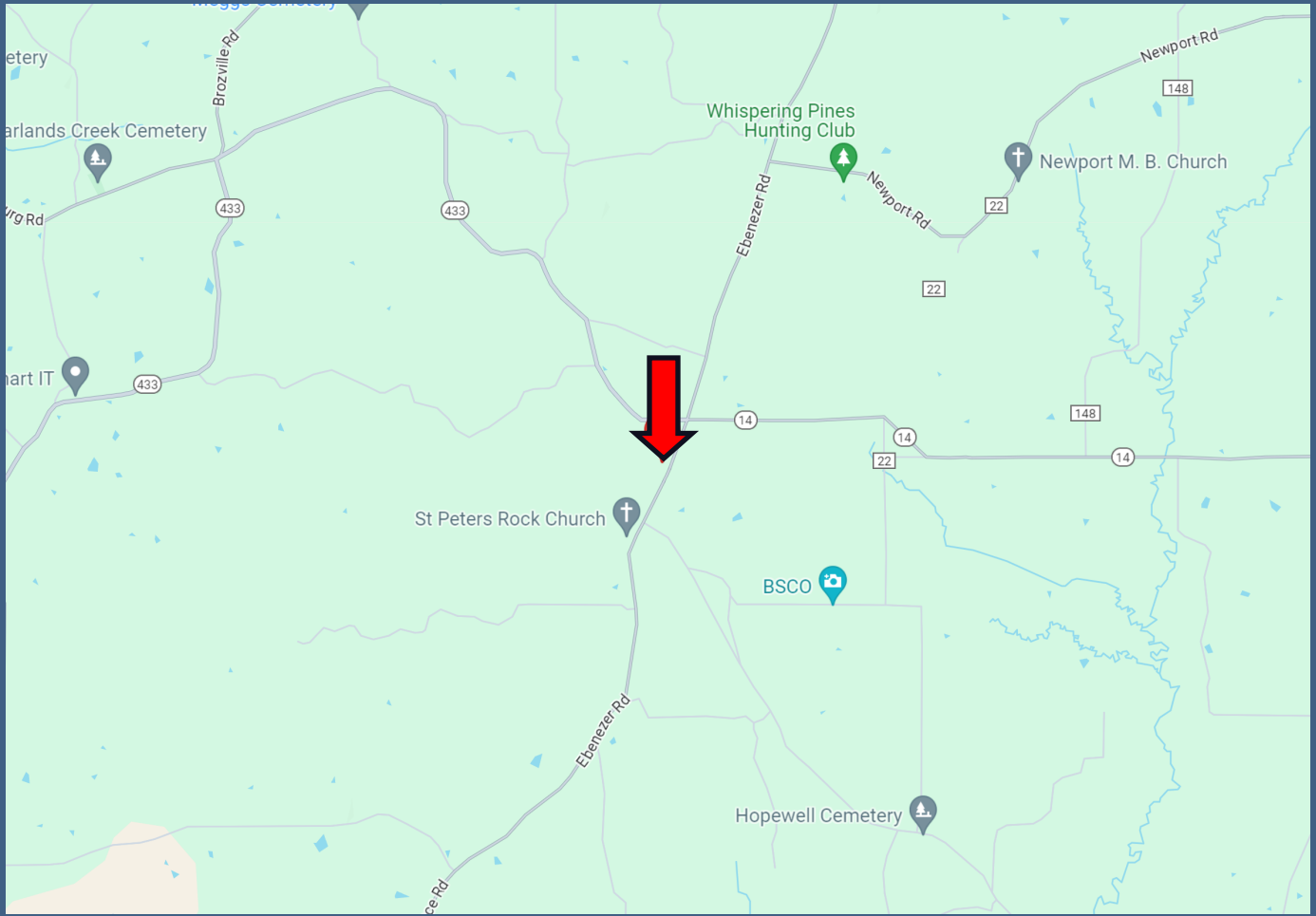


A Real Estate Expert You Can Trust

TomSmithLandandHomes.com

Information is believed to be accurate but not guaranteed.





DIRECTIONAL MAP

Directions from Hwy 14 and I-55 in Holmes County, MS: Take exit 146 to merge onto Hwy 14 and travel 1.5 miles. Turn left onto Hwy 14/Hwy 17 and travel .5 miles. Turn right onto Hwy 14 and travel 6.2 miles to Ebenezer. Turn left on Ebenezer Rd and travel .3 miles. The property will be on your right. GPS: 32.9662, -90.0923

[GOOGLE MAP LINK](#)



**SAM
SAMPLE**
REALTOR®

Office: 601.898.2772

Cell: 601.668.5697

Sam@TomSmithLand.com



A Real Estate Expert You Can Trust

TomSmithLandandHomes.com

Information is believed to be accurate but not guaranteed.

