



Lauderdale County Commercial Lot

.39± ACRES IN MERIDIAN, MS



This commercial opportunity consists of .39 surveyed acres in Lauderdale County, MS, cleared and ready for construction. The property fronts 18th Street and Highway 39 Frontage Road and lies north of the Mister carwash in Meridian. The property is zoned B2. Join in the growth of this new business corridor. Call Tom to schedule your viewing today!

Directions from I-20 in Meridian, MS: Take exit 154B to merge onto Hwy 39 towards Dekalb. Keep left to continue onto Hwy 39 and travel 1.5 miles. Turn right onto Hwy 39 Frontage Road. After .1 mile, the property will be on your right. [Google Map Link](#)



**TOM
SMITH**

ALC®, BROKER

Office: 601.898.2772

Cell: 601.454.9397

Tom@TomSmithLand.com



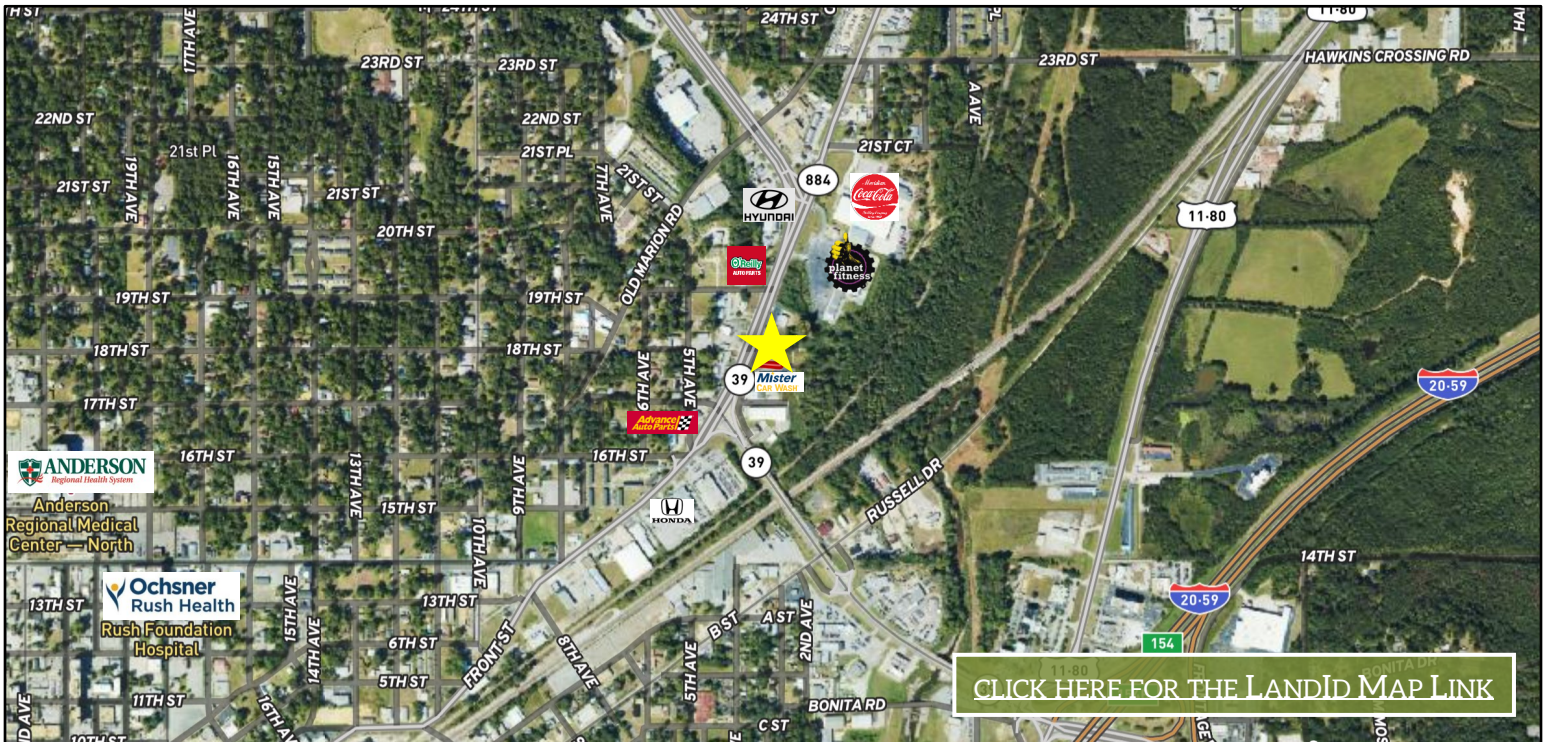
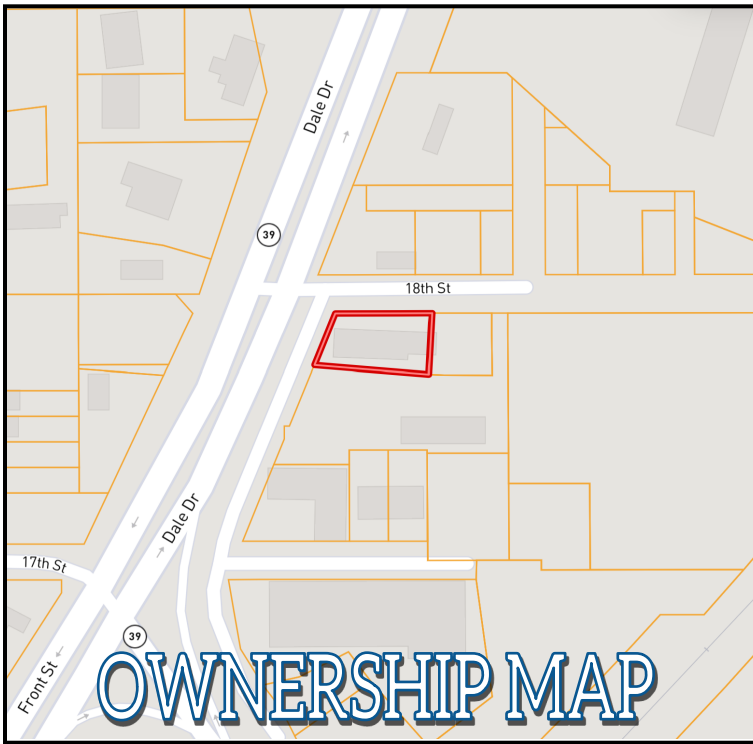
Expect More. Get More.

Call The Land Man Today!

TomSmithLandandHomes.com

Information is believed to be accurate but not guaranteed.

LandReport
2011-2024
BEST
BROKERAGES



The Land & Homes Expert
You Can Trust!

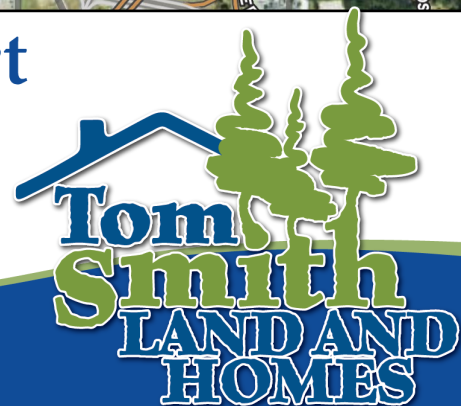
TOM SMITH

ALC®, BROKER

O: 601.898.2772 C: 601.454.9397

Tom@TomSmithLand.com

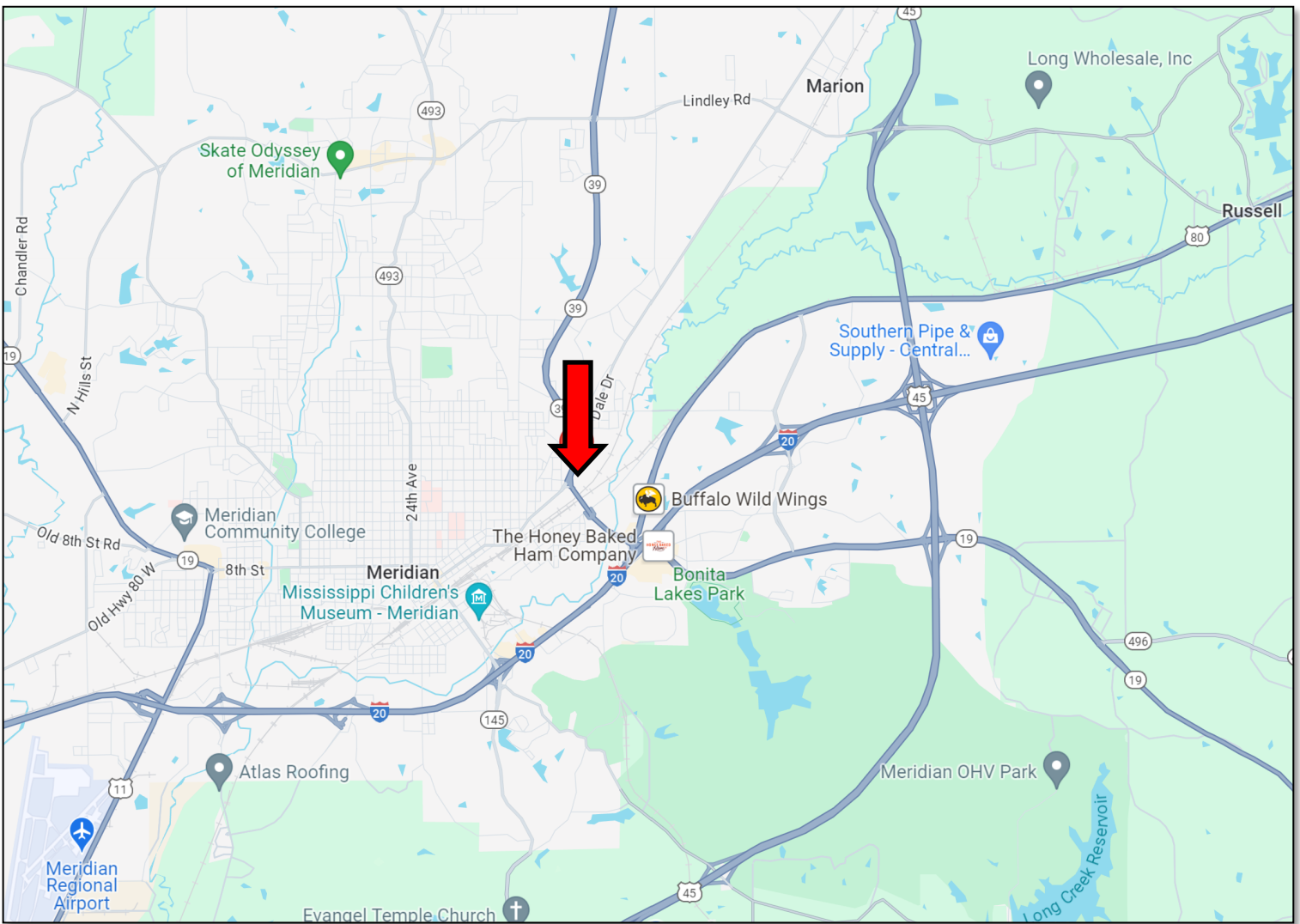
TomSmithLandandHomes.com



Expect More. Get More.

Information is believed to be accurate but not guaranteed.





DIRECTIONAL MAP

Directions from I-20 in Meridian, MS: Take exit 154B to merge onto Hwy 39 towards Dekalb. Keep left to continue onto Hwy 39 and travel 1.5 miles. Turn right onto Hwy 39 Frontage Road. After .1 mile, the property will be on your right. [Google Map Link](#)



TOM SMITH

ALC®, BROKER

Office: 601.898.2772

Cell: 601.454.9397

Tom@TomSmithLand.com



Expect More. Get More.

Call The Land Man Today!

TomSmithLandandHomes.com

Information is believed to be accurate but not guaranteed.

