

5.2± ACRE PROPERTY LEAKE COUNTY, MS



\$57,200

Are you looking for a great place to build your dream home? This 5.2+/- acre property in Leake County, MS, is what you are looking for. The property is located within the Leake County School District and has 1,000 feet of road frontage along Airport Road. It is conveniently located near the Carthage Country Club and Airport and comes equipped with all essential utilities. Whether you envision creating multiple homes or constructing your dream residence with plenty of space for recreation, this versatile property offers endless possibilities. To schedule a private showing, call or text Walker! Additional Acreage Available

Directions from from Hwy 35 and Hwy 16 in Carthage, MS: Travel Hwy 16 for .5 miles. Turn left onto S Jordan Street and travel 1.2 miles. Turn left onto Airport Road. After .3 miles, the property will be on your left. [Google Map Link](#)



**WALKER
TRANUM**
REALTOR®

Office: 662.268.6333
Cell: 662.769.1442

Walker@TomSmithHomes.com



A Real Estate Expert You Can Trust

TomSmithLandandHomes.com

Information is believed to be accurate but not guaranteed.





**WALKER
TRANUM**
REALTOR®

Office: 662.268.6333
Cell: 662.769.1442

Walker@TomSmithHomes.com



A Real Estate Expert You Can Trust

TomSmithLandandHomes.com

Information is believed to be accurate but not guaranteed.



Aerial Map



Click [Here](#) for an Interactive Map Link



**WALKER
TRANUM**
REALTOR®

Office: 662.268.6333
Cell: 662.769.1442

Walker@TomSmithHomes.com



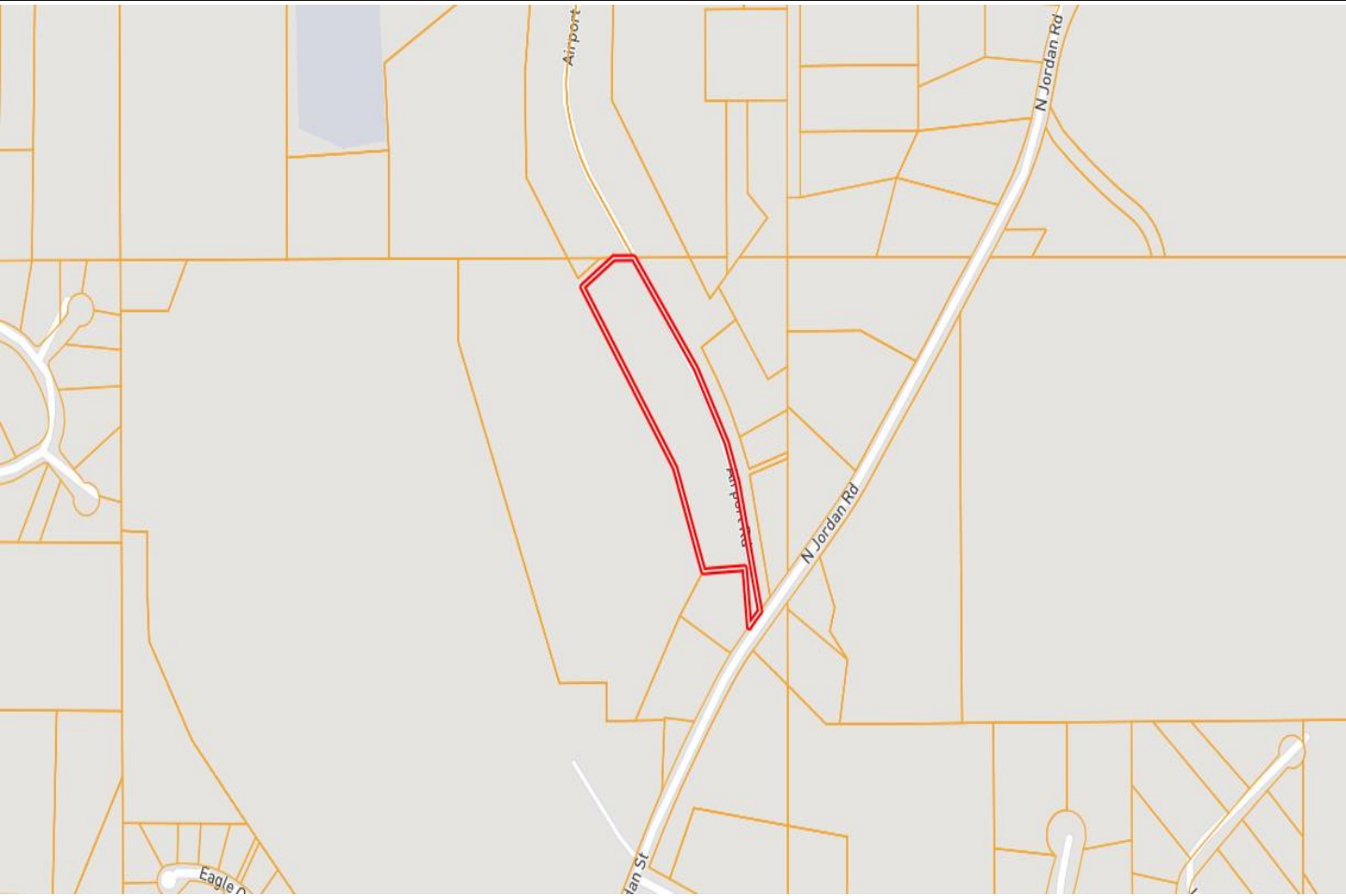
A Real Estate Expert You Can Trust

TomSmithLandandHomes.com

Information is believed to be accurate but not guaranteed.

2011-2023
BEST
BROKERAGES

Ownership Map



**WALKER
TRANUM**
REALTOR®

Office: 662.268.6333
Cell: 662.769.1442

Walker@TomSmithHomes.com



A Real Estate Expert You Can Trust

TomSmithLandandHomes.com

Information is believed to be accurate but not guaranteed.

Entrepreneur
2011-2023
BEST
BROKERAGES

Flood Map



**WALKER
TRANUM**
REALTOR®

Office: 662.268.6333
Cell: 662.769.1442

Walker@TomSmithHomes.com



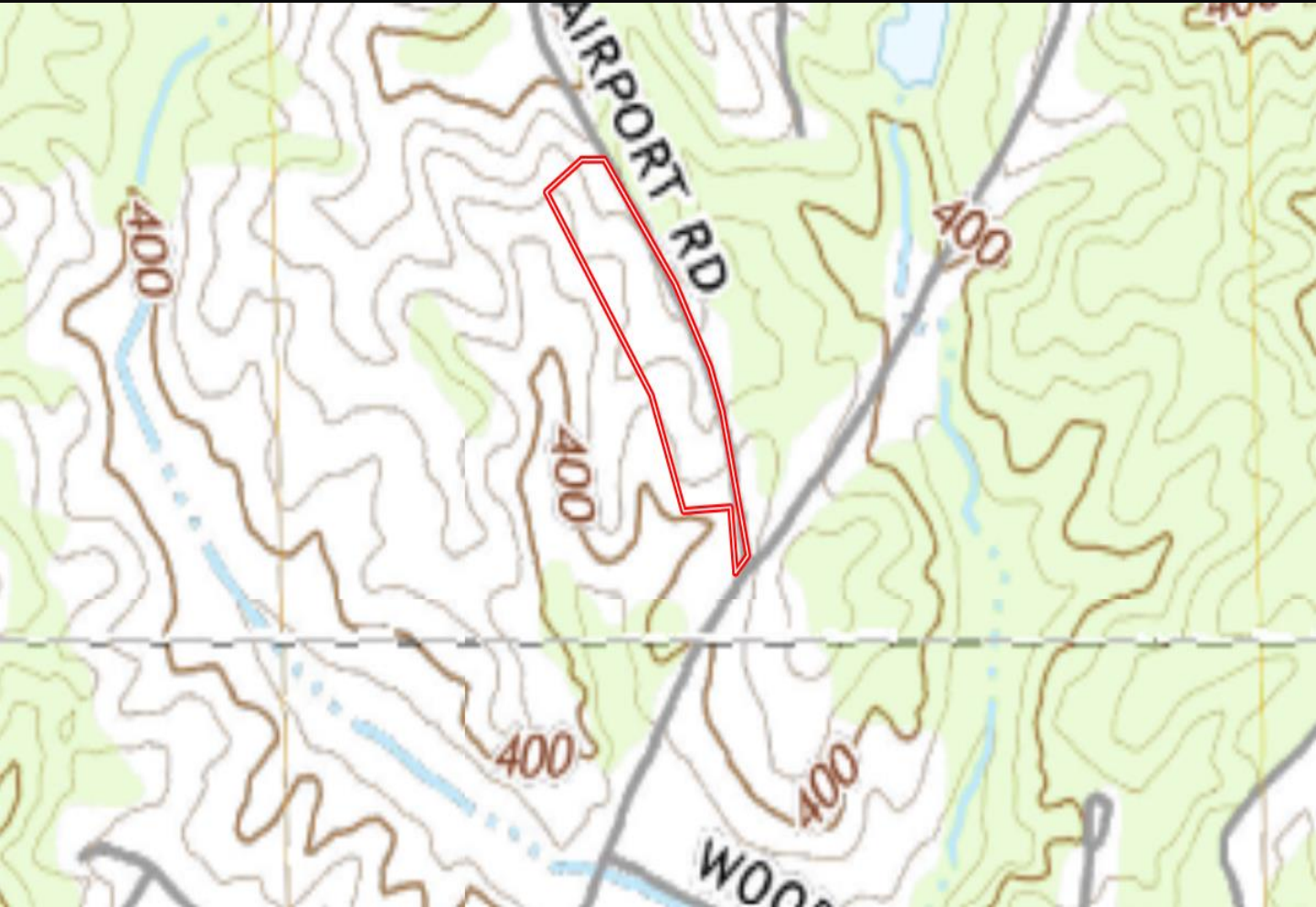
A Real Estate Expert You Can Trust

TomSmithLandandHomes.com

Information is believed to be accurate but not guaranteed.



Topography Map



**WALKER
TRANUM**
REALTOR®

Office: 662.268.6333
Cell: 662.769.1442

Walker@TomSmithHomes.com



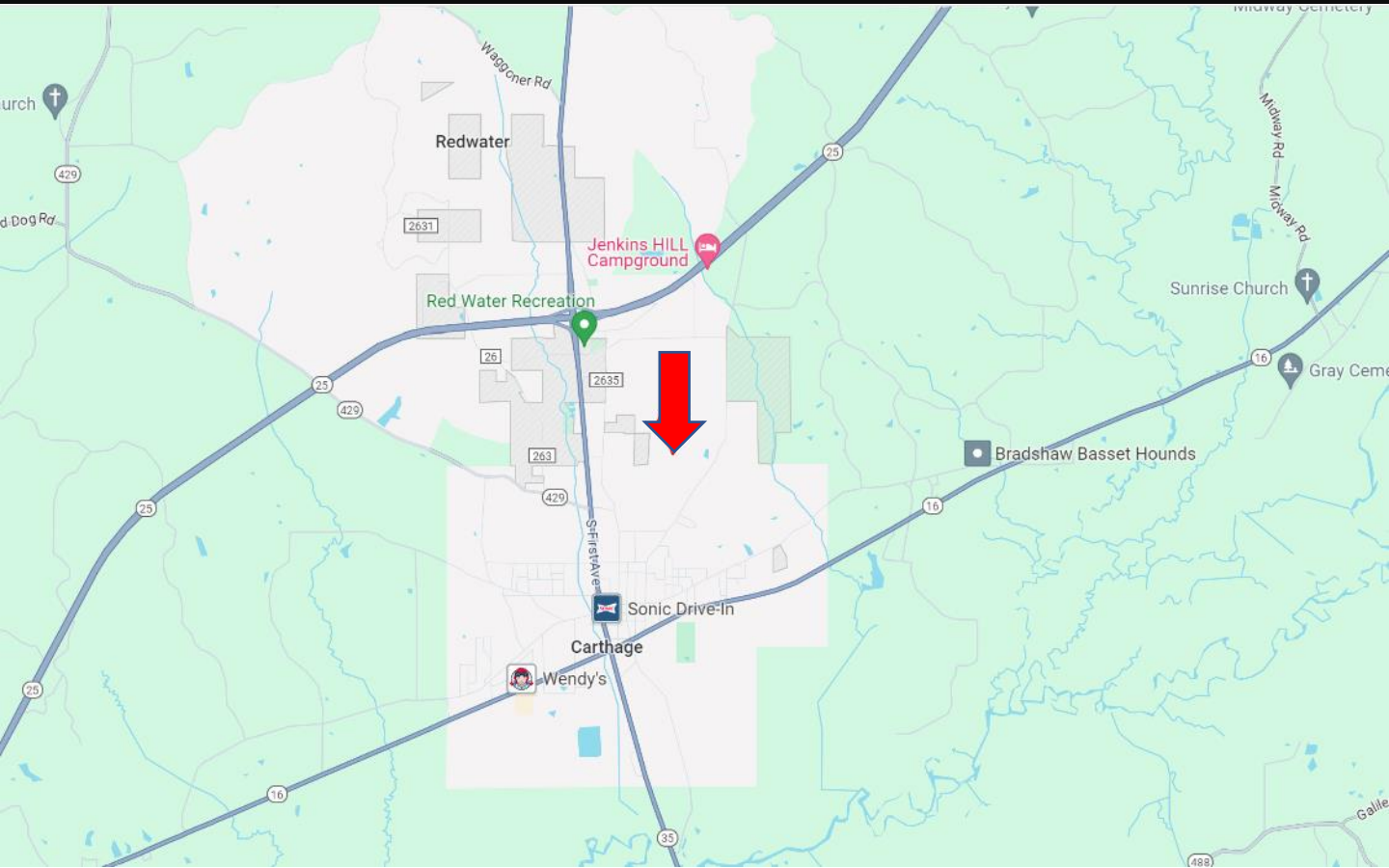
A Real Estate Expert You Can Trust

TomSmithLandandHomes.com

Information is believed to be accurate but not guaranteed.



Directional Map



Directions from from Hwy 35 and Hwy 16 in Carthage, MS: Travel Hwy 16 for .5 miles. Turn left onto S Jordan Street and travel 1.2 miles. Turn left onto Airport Road. After .3 miles, the property will be on your left. [Google Map Link](#)



**WALKER
TRANUM**
REALTOR®

Office: 662.268.6333
Cell: 662.769.1442

Walker@TomSmithHomes.com



A Real Estate Expert You Can Trust

TomSmithLandandHomes.com

Information is believed to be accurate but not guaranteed.

