

Diverse Recreational Hunting Tract

96.7± Acres in Tallahatchie County, MS

\$285,750

This 96.7± acre property in Tallahatchie County, MS, features excellent deer and turkey hunting, complemented by a private 1.5± acre fishing pond on the northeast corner, stocked with bream and bass. This property offers diverse landscapes with around 65± acres of mixed hardwood, with the remaining acreage being pastureland. With two gated entrances, accessing your property is convenient. Utilities are in place, making it suitable for building a camp house or your future home. This must-see property provides a variety of recreational activities, including hunting, fishing, trail hiking, potential yearly income, or an ideal spot for a campsite. This property is in a turkey paradise with open fields for those long beards to be strutting all day!!



ANTHONY STEEN
REALTOR®

O: 662.441.2500 | C: 662.645.5151
Anthony@TomSmithLand.com



KADERO EDLEY
REALTOR®

O: 601.898.2772 | C: 601.488.7000
Kadero@TomSmithLand.com



ANTHONY STEEN
REALTOR®

O: 662.441.2500 | C: 662.645.5151
Anthony@TomSmithLand.com



KADERO EDLEY
REALTOR®

O: 601.898.2772 | C: 601.488.7000
Kadero@TomSmithLand.com

TomSmithLandandHomes.com

Information is believed to be accurate but not guaranteed.





ANTHONY STEEN
REALTOR®

O: 662.441.2500 | C: 662.645.5151
Anthony@TomSmithLand.com



KADERO EDLEY
REALTOR®

O: 601.898.2772 | C: 601.488.7000
Kadero@TomSmithLand.com

TomSmithLandandHomes.com

Information is believed to be accurate but not guaranteed





ANTHONY STEEN
REALTOR®

O: 662.441.2500 | C: 662.645.5151
Anthony@TomSmithLand.com



KADERO EDLEY
REALTOR®

O: 601.898.2772 | C: 601.488.7000
Kadero@TomSmithLand.com

TomSmithLandandHomes.com

Information is believed to be accurate but not guaranteed.





ANTHONY STEEN
REALTOR®

O: 662.441.2500 | C: 662.645.5151
Anthony@TomSmithLand.com



KADERO EDLEY
REALTOR®

O: 601.898.2772 | C: 601.488.7000
Kadero@TomSmithLand.com

TomSmithLandandHomes.com

Information is believed to be accurate but not guaranteed.





ANTHONY STEEN
REALTOR®

O: 662.441.2500 | C: 662.645.5151
Anthony@TomSmithLand.com



KADERO EDLEY
REALTOR®

O: 601.898.2772 | C: 601.488.7000
Kadero@TomSmithLand.com

TomSmithLandandHomes.com

Information is believed to be accurate but not guaranteed





ANTHONY STEEN
REALTOR®

O: 662.441.2500 | C: 662.645.5151
Anthony@TomSmithLand.com



KADERO EDLEY
REALTOR®

O: 601.898.2772 | C: 601.488.7000
Kadero@TomSmithLand.com

TomSmithLandandHomes.com

Information is believed to be accurate but not guaranteed.





ANTHONY STEEN
REALTOR®

O: 662.441.2500 | C: 662.645.5151
Anthony@TomSmithLand.com



KADERO EDLEY
REALTOR®

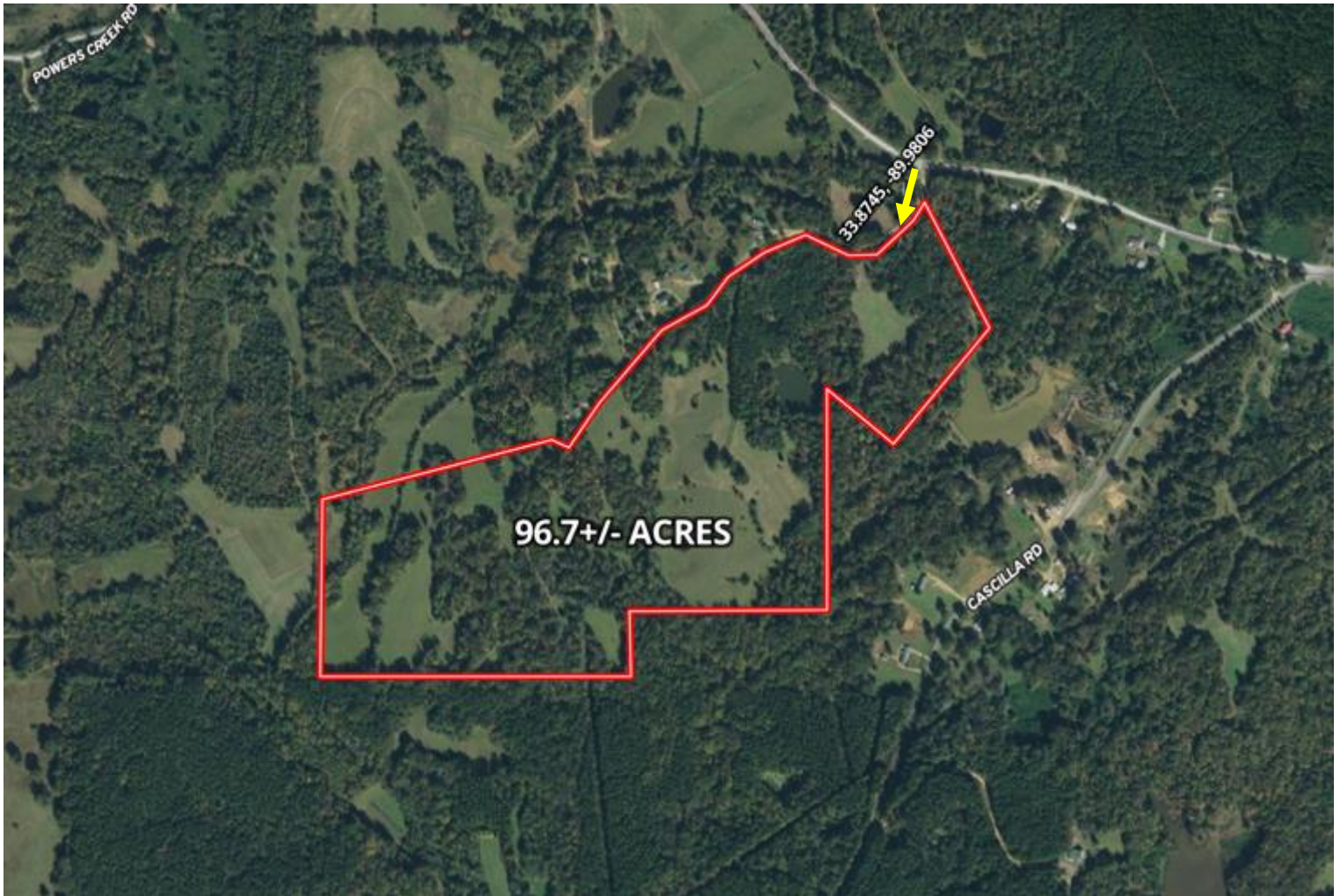
O: 601.898.2772 | C: 601.488.7000
Kadero@TomSmithLand.com

TomSmithLandandHomes.com

Information is believed to be accurate but not guaranteed.



AERIAL MAP



[Click for Here for an Interactive Map](#)

ANTHONY STEEN
REALTOR®

O: 662.441.2500 | C: 662.645.5151
Anthony@TomSmithLand.com



KADERO EDLEY
REALTOR®

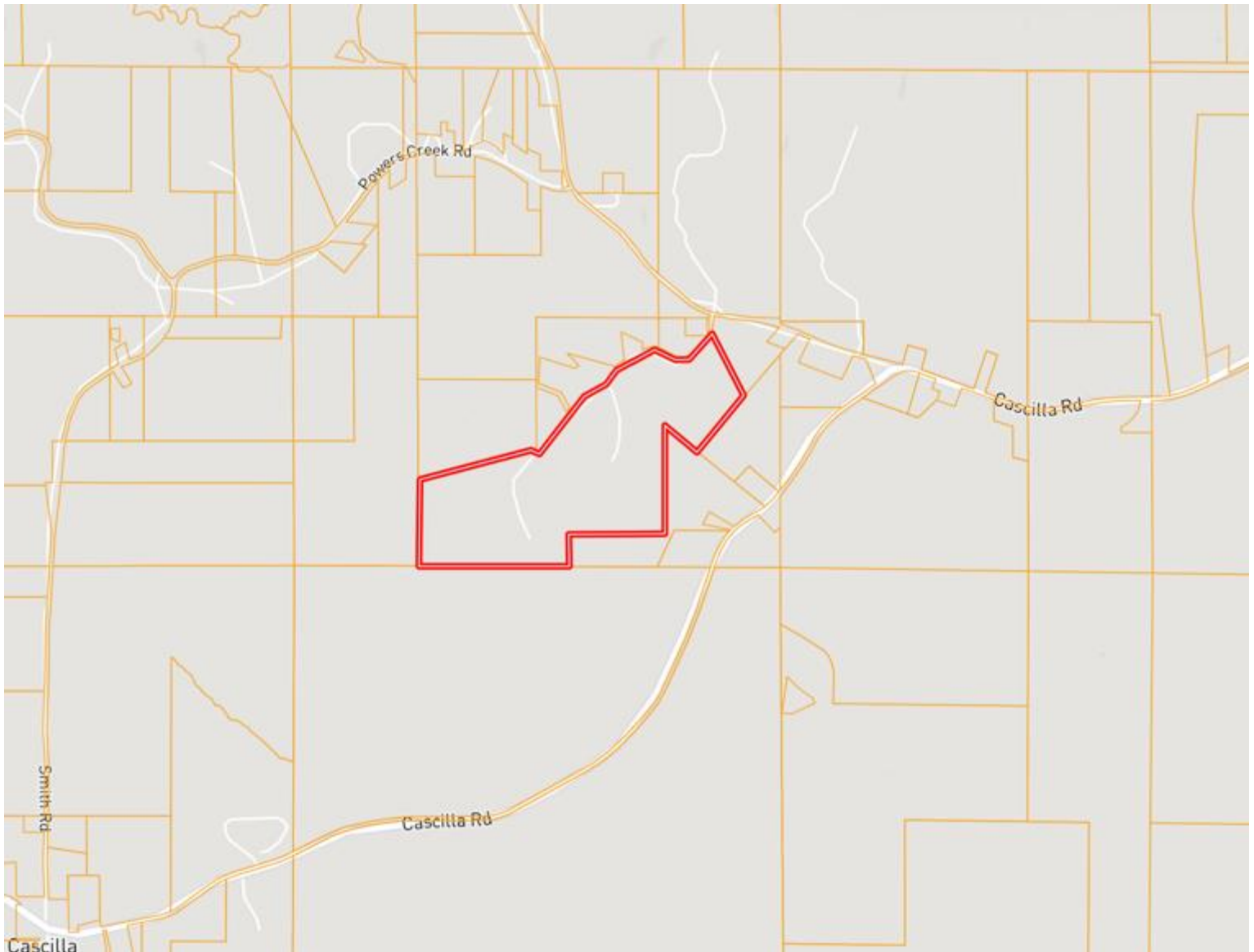
O: 601.898.2772 | C: 601.488.7000
Kadero@TomSmithLand.com

TomSmithLandandHomes.com

Information is believed to be accurate but not guaranteed



OWNERSHIP MAP



ANTHONY STEEN
REALTOR®

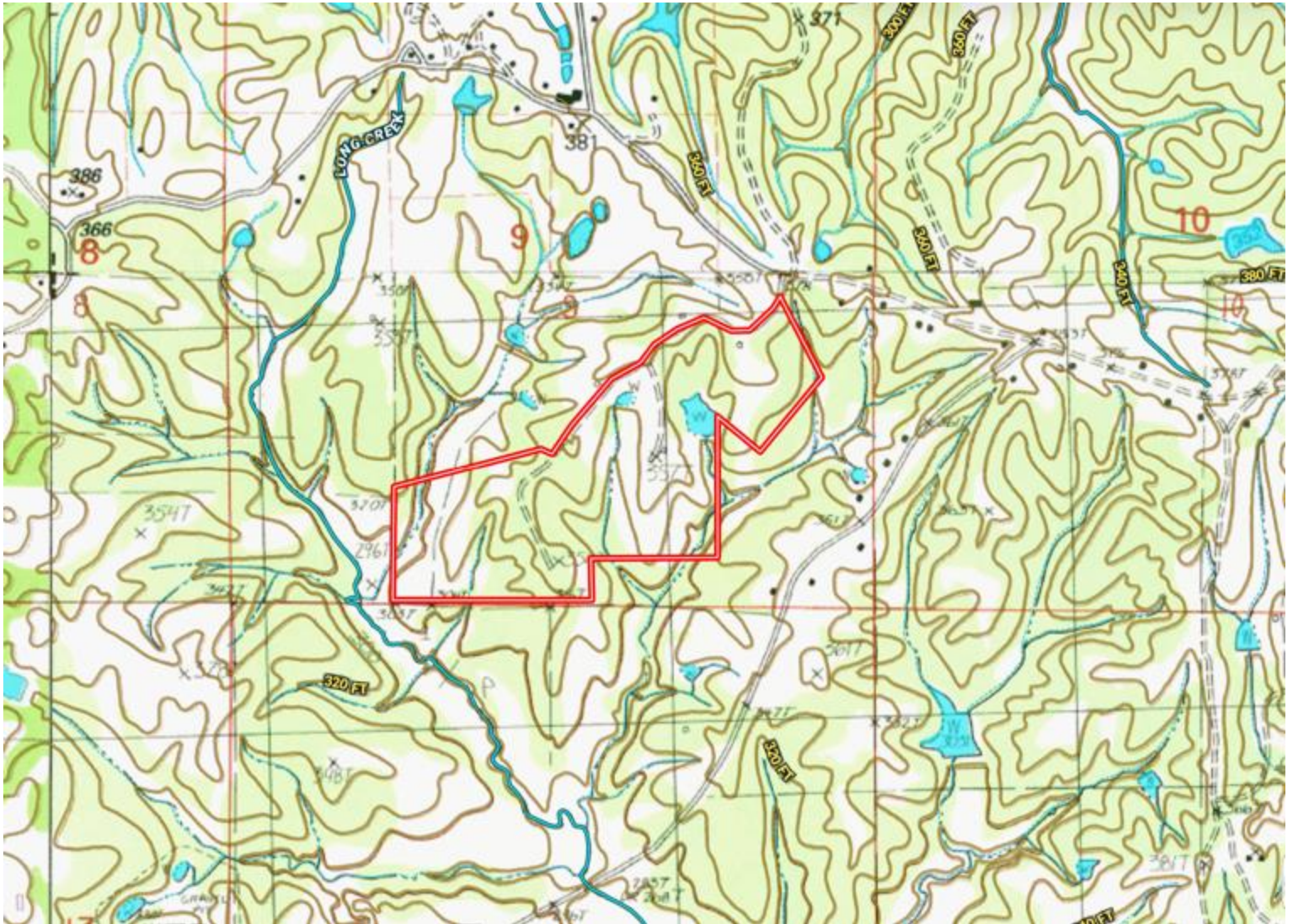
O: 662.441.2500 | C: 662.645.5151
Anthony@TomSmithLand.com



KADERO EDLEY
REALTOR®

O: 601.898.2772 | C: 601.488.7000
Kadero@TomSmithLand.com

TOPOGRAPHY MAP



ANTHONY STEEN
REALTOR®

O: 662.441.2500 | C: 662.645.5151
Anthony@TomSmithLand.com



KADERO EDLEY
REALTOR®

O: 601.898.2772 | C: 601.488.7000
Kadero@TomSmithLand.com

TomSmithLandandHomes.com

Information is believed to be accurate but not guaranteed.



SOIL MAP



SOIL CODE	SOIL DESCRIPTION	ACRES	%	CPI	NCCPI	CAP
MeE3	Memphis silt loam, 12 to 17 percent slopes, severely eroded	30.64	31.73	0	71	6e
MeD3	Memphis silt loam, 5 to 12 percent slopes, severely eroded	30.33	31.41	0	76	4e
GuF	Gullied land-Memphis complex, 8 to 40 percent slopes	21.11	21.86	0	1	7e
Cn	Collins silt loam	13.47	13.95	0	56	2w
W	Water	0.99	1.03	0	-	-

ANTHONY STEEN
REALTOR®

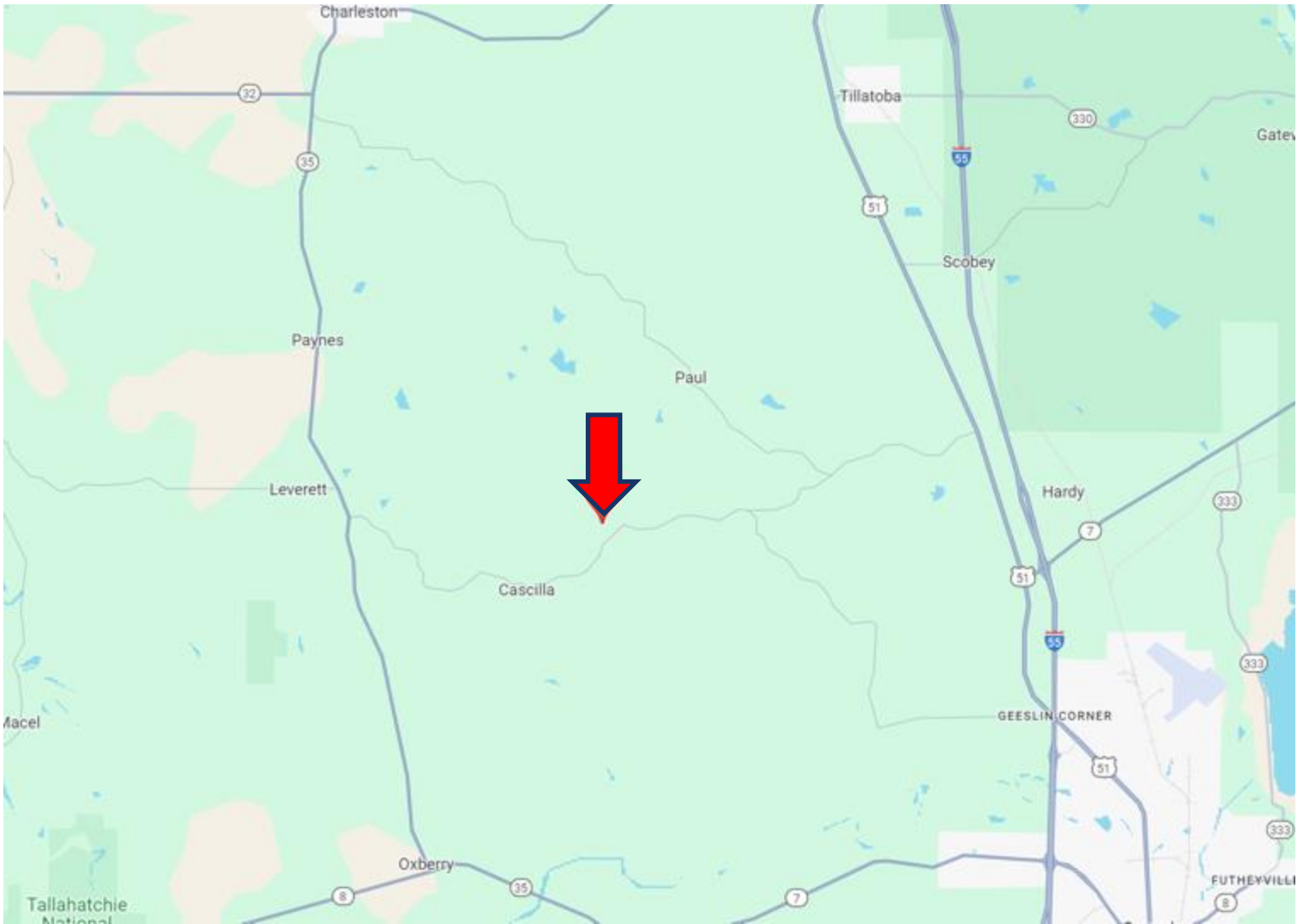
O: 662.441.2500 | C: 662.645.5151
Anthony@TomSmithLand.com



KADERO EDLEY
REALTOR®

O: 601.898.2772 | C: 601.488.7000
Kadero@TomSmithLand.com

DIRECTIONAL MAP



Directions from Hwy 35 and Hwy 32 in Charleston, MS: Travel Hwy 35S for 9.4 miles. Turn left onto Cascilla Road and travel 6.4 miles. Turn left onto Paul-Shady Grove Road and travel .4 miles. Turn left onto W Kendall Drive. The property entrance will be on your left.

[GOOGLE MAP LINK](#)



ANTHONY STEEN
REALTOR®

O: 662.441.2500 | C: 662.645.5151
Anthony@TomSmithLand.com



KADERO EDLEY
REALTOR®

O: 601.898.2772 | C: 601.488.7000
Kadero@TomSmithLand.com