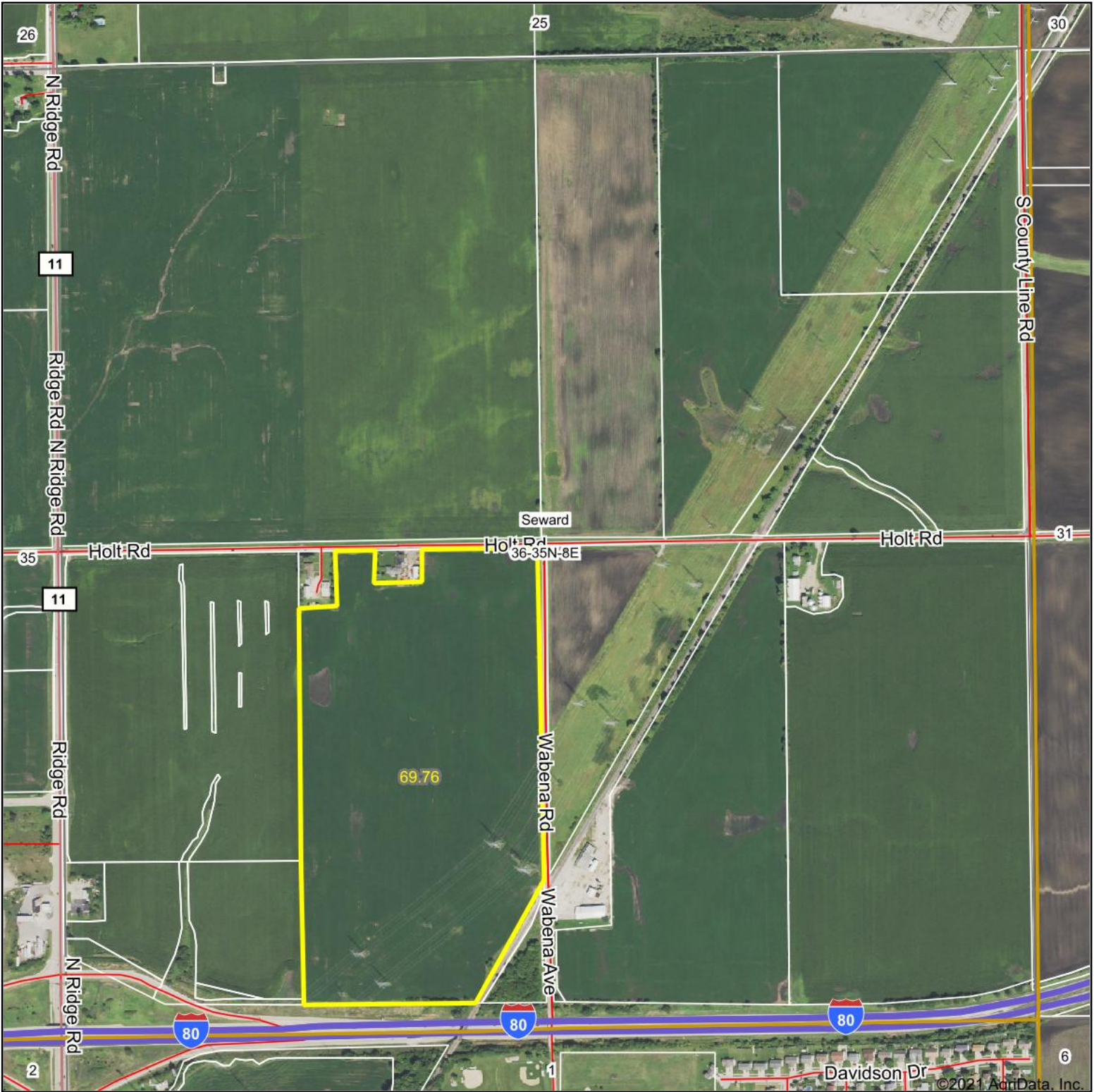


# Aerial Map



Map Center: 41° 28' 11.03, -88° 15' 43.43



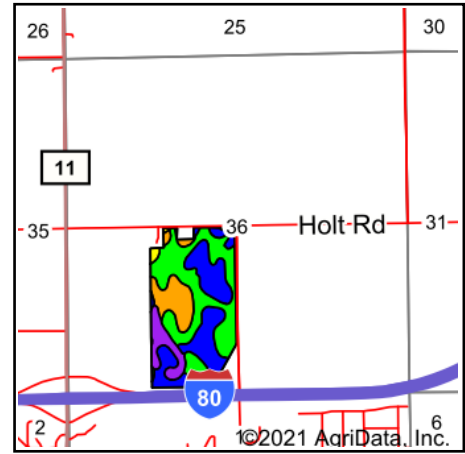
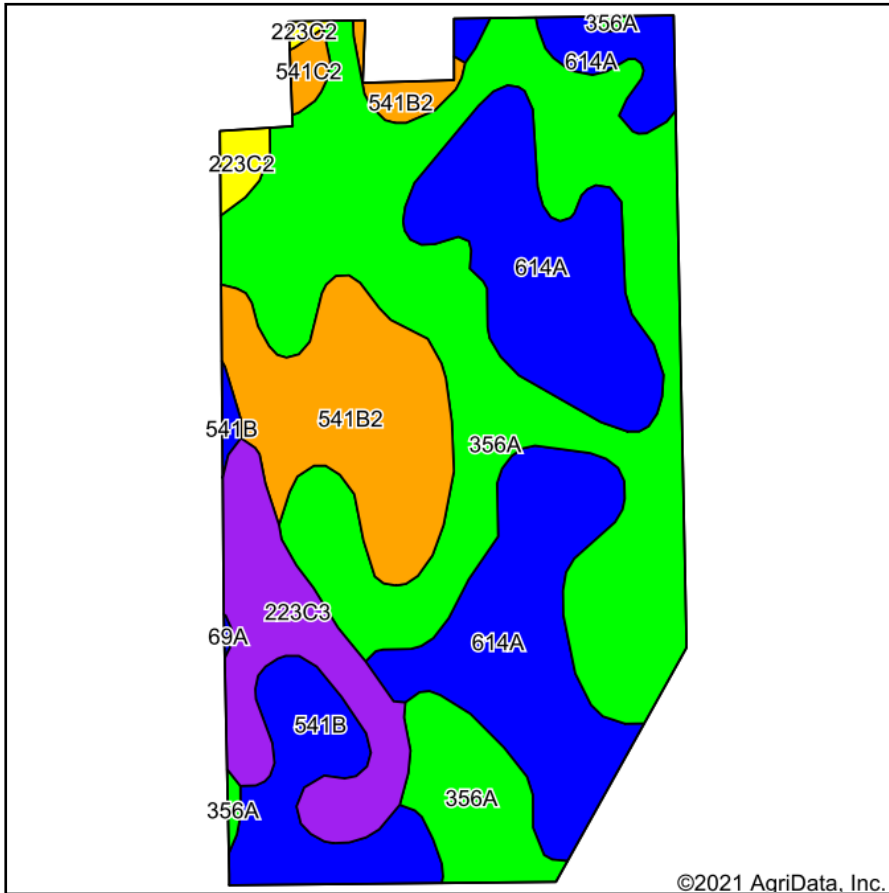
**36-35N-8E**  
**Kendall County**  
**Illinois**



10/18/2021



# Soils Map



State: **Illinois**  
 County: **Kendall**  
 Location: **36-35N-8E**  
 Township: **Seward**  
 Acres: **69.76**  
 Date: **10/18/2021**



Soils data provided by USDA and NRCS.

Area Symbol: IL093, Soil Area Version: 17

Code	Soil Description	Acres	Percent of field	Il. State Productivity Index Legend	Water Table	Restrictive Layer	Soil Drainage	Subsoil rooting <sup>a</sup>	Corn Bu/A	Soybeans Bu/A	Crop productivity index for optimum management
356A	Elpaso silty clay loam, 0 to 2 percent slopes	30.00	43.0%		0.5ft.	> 6.5ft.	Poorly drained	FAV	195	63	144
614A	Chenoa silty clay loam, 0 to 2 percent slopes	19.01	27.3%		1.5ft.	> 6.5ft.	Somewhat poorly drained	FAV	174	57	129
**541B2	Graymont silt loam, 2 to 5 percent slopes, eroded	8.72	12.5%		2.7ft.	> 6.5ft.	Moderately well drained	FAV	**174	**54	**127
**223C3	Varna silty clay loam, 4 to 6 percent slopes, severely eroded	5.98	8.6%		2.1ft.	3.1ft. (Densic material)	Moderately well drained	FAV	**139	**44	**102
**541B	Graymont silt loam, 2 to 5 percent slopes	4.87	7.0%		2.7ft.	> 6.5ft.	Moderately well drained	FAV	**181	**56	**133
**223C2	Varna silt loam, 4 to 6 percent slopes, eroded	0.73	1.0%		2.7ft.	4ft. (Densic material)	Moderately well drained	FAV	**150	**48	**110
**541C2	Graymont silt loam, 5 to 10 percent slopes, eroded	0.45	0.6%		2.5ft.	> 6.5ft.	Moderately well drained	FAV	**170	**53	**125
<b>Weighted Average</b>									<b>180.2</b>	<b>57.9</b>	<b>132.9</b>

**Table: Optimum Crop Productivity Ratings for Illinois Soil by K.R. Olson and J.M. Lang, Office of Research, ACES, University of Illinois at Champaign-Urbana.** Version: 1/2/2012 Amended Table S2 B811

Crop yields and productivity indices for optimum management (B811) are maintained at the following NRES web site: <http://soilproductivity.nres.illinois.edu/>

\*\* Indexes adjusted for slope and erosion according to Bulletin 811 Table S3

<sup>a</sup> UNF = unfavorable; FAV = favorable

Soils data provided by USDA and NRCS. Soils data provided by University of Illinois at Champaign-Urbana.

# Topography Contours



©2021 AgriData, Inc.



© AgriData, Inc. 2021 www.AgriDataInc.com  
Field borders provided by Farm Service Agency as of 5/21/2008.

Source: USGS 3 meter dem  
Interval(ft): 3.0  
Min: 627.3  
Max: 645.1  
Range: 17.8  
Average: 635.0  
Standard Deviation: 2.49 ft

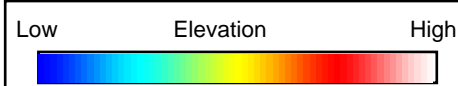
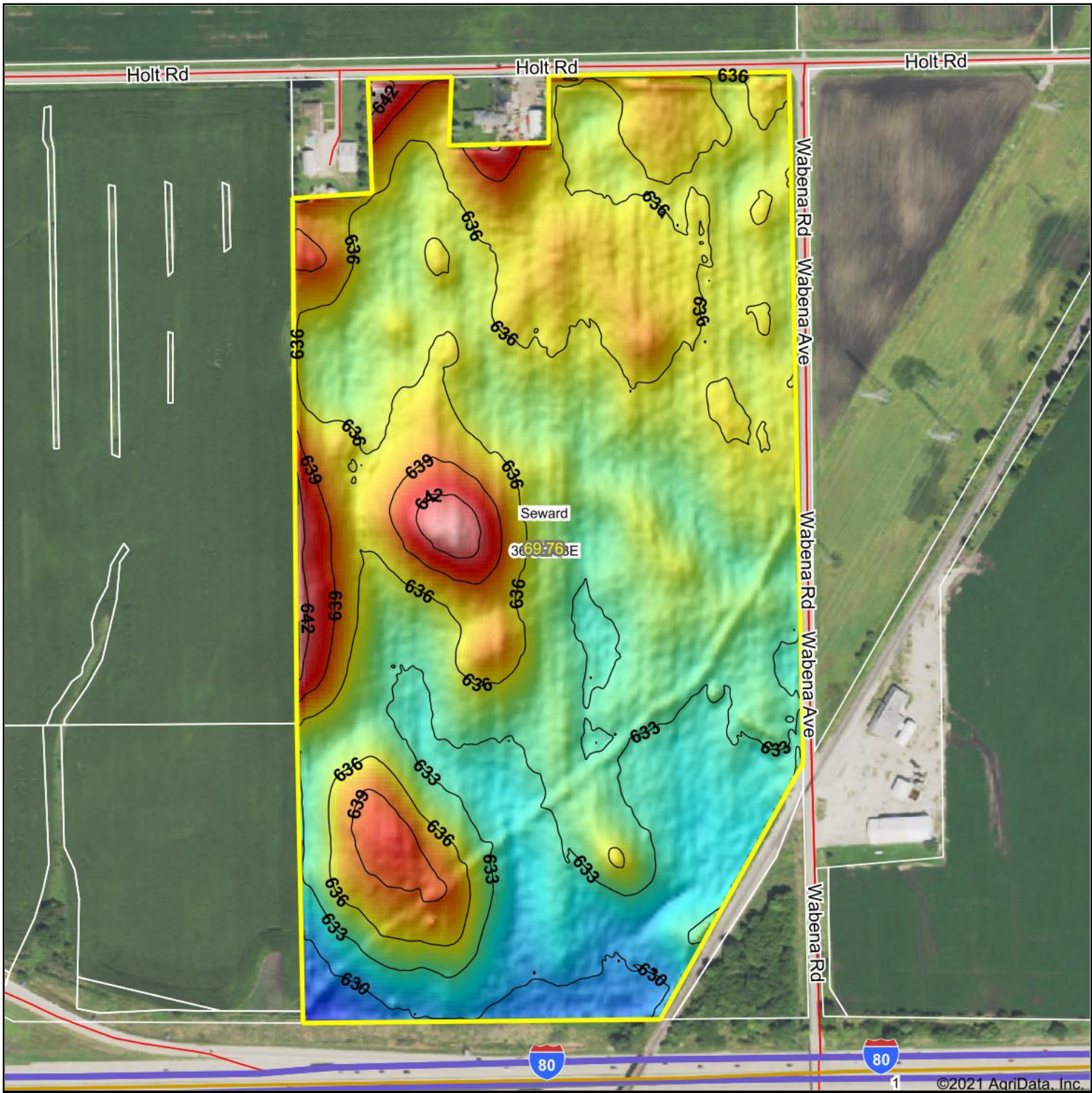


10/18/2021

**36-35N-8E**  
**Kendall County**  
**Illinois**

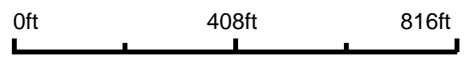
Map Center: 41° 28' 11.03, -88° 15' 43.43

# Topography Hillshade



Field borders provided by Farm Service Agency as of 5/21/2008.

Source: USGS 3 meter dem  
 Interval(ft): 3  
 Min: 627.3  
 Max: 645.1  
 Range: 17.8  
 Average: 635.0  
 Standard Deviation: 2.49 ft



10/18/2021

**36-35N-8E**  
**Kendall County**  
**Illinois**

map center: 41° 28' 11.03, -88° 15' 43.43

©2021 AgriData, Inc.