

261 S. Brooks Avenue, Boyle, MS 38730



\$175,000

Take a look at this recently renovated 1,417 SF home in Boyle, Bolivar County, MS. The three-bedroom, two-bathroom home features a two-car garage and showcases new windows, doors, roof, interior and exterior paint, stainless steel appliances, and faucets. With a backyard that borders an open field, indulge in the beauty of delta sunsets while grilling outdoors. Call Tracey Bell to schedule your private showing.



**TRACEY
BELL**

MANAGING BROKER

Office: 662.441.2500

Cell: 662.719.4720

Tracey@TomSmithLand.com



Expect More. Get More.

A Real Estate Expert You Can Trust

TomSmithLandandHomes.com

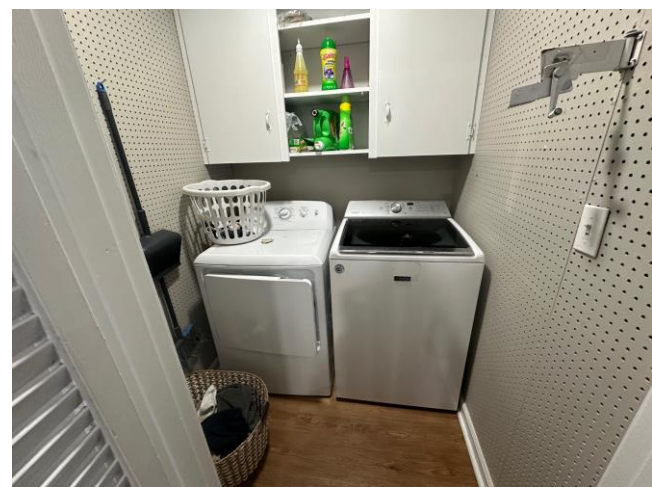
Information is believed to be accurate but not guaranteed.





NEW:

- Roof
- Doors
- Windows
- HVAC
- Stainless Steel Appliances
- Flooring in the kitchen and living area
- Interior and Exterior Paint



**TRACEY
BELL**

MANAGING BROKER

Office: 662.441.2500

Cell: 662.719.4720

Tracey@TomSmithLand.com



A Real Estate Expert You Can Trust

TomSmithLandandHomes.com

Information is believed to be accurate but not guaranteed.





**TRACEY
BELL**

MANAGING BROKER

Office: 662.441.2500

Cell: 662.719.4720

Tracey@TomSmithLand.com



A Real Estate Expert You Can Trust
TomSmithLandandHomes.com

2011-2023
BEST



**TRACEY
BELL**

MANAGING BROKER

Office: 662.441.2500

Cell: 662.719.4720

Tracey@TomSmithLand.com

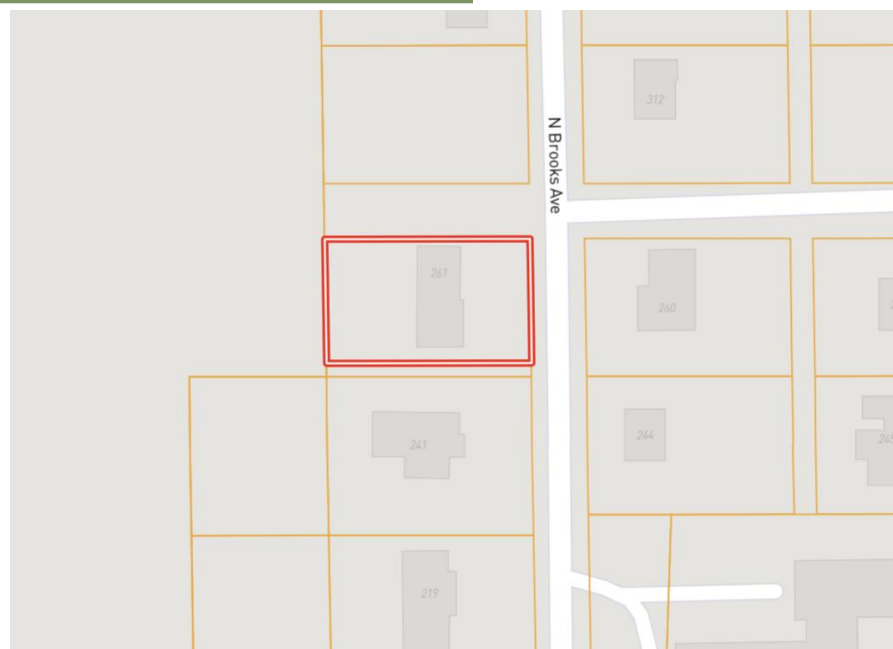


A Real Estate Expert You Can Trust
TomSmithLandandHomes.com

Information is believed to be accurate but not guaranteed.



MAPS | [Click for Interactive Map](#)



Address: 261 Brooks Avenue,
Boyle, MS 38730

Directions from Hwy 8 & Hwy 61 in Cleveland, MS: Travel south on Hwy 61 for 3.4 miles. Turn right on Laughlin Road, then turn left onto Memorial Drive. After 0.8 miles, the home will be on the right. [Click for Google Maps.](#)



**TRACEY
BELL**

MANAGING BROKER

Office: 662.441.2500

Cell: 662.719.4720

Tracey@TomSmithLand.com



Expect More. Get More.

A Real Estate Expert You Can Trust

TomSmithLandandHomes.com

Information is believed to be accurate but not guaranteed.

