

Oktibbeha County Home

100 DOVER COURT STARKVILLE MS, 39759



\$459,680

Are you looking for a charming home in a great neighborhood? Look no further! This three-bedroom, two-bath house is located on a .2 acre corner lot in the Huntington Park Subdivision in Starkville, MS. It was built in 1999 and has 2704 square feet of living space, a two-car garage, spacious kitchen, living area, and a generous-sized primary suite. There is a patio to the side of the house where you can hang out, and all the appliances will remain on the property. To schedule a private showing, call or text Walker! Agent is related to seller.

Directions From Starkville: Leaving Starkville, head south on Eckford lane/ Victory Lane .3 miles. Then turn left onto Lynn Lane for .4 miles. After that turn right onto South Montgomery Street for 1.6 miles. Then turn right onto Hunting Drive for .4 miles. Then the house will be on your left. [GOOGLE MAP LINK](#)



**WALKER
TRANUM**
REALTOR®

Office: 662.268.6333
Cell: 662.769.1442

Walker@TomSmithHomes.com



A Real Estate Expert You Can Trust

TomSmithLandandHomes.com

Information is believed to be accurate but not guaranteed.

2011-2023
BEST
BROKERAGES



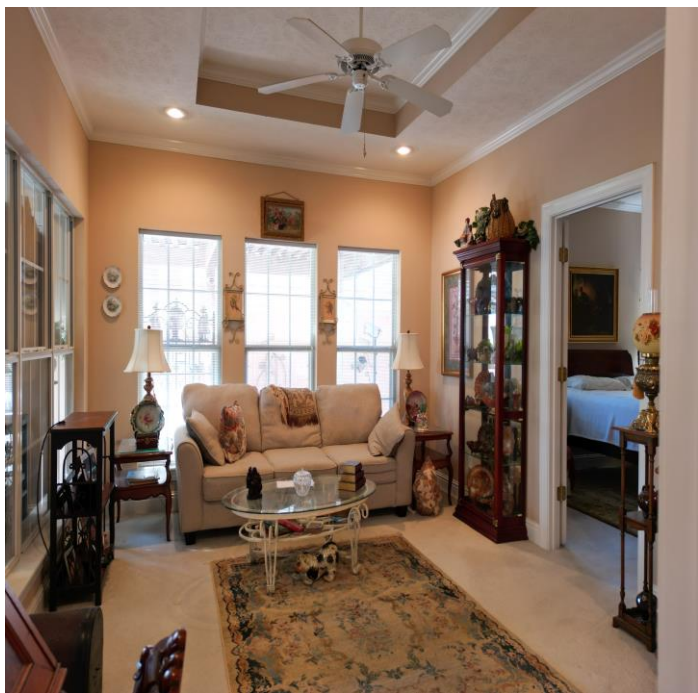
**WALKER
TRANUM**
REALTOR®
Office: 662.268.6333
Cell: 662.769.1442
Walker@TomSmithHomes.com



A Real Estate Expert You Can Trust
TomSmithLandandHomes.com

Information is believed to be accurate but not guaranteed.





**WALKER
TRANUM**
REALTOR®

Office: 662.268.6333
Cell: 662.769.1442
Walker@TomSmithHomes.com



A Real Estate Expert You Can Trust

TomSmithLandandHomes.com

Information is believed to be accurate but not guaranteed.



Aerial Map



Click [Here](#) for Interactive Link



**WALKER
TRANUM**
REALTOR®

Office: 662.268.6333
Cell: 662.769.1442

Walker@TomSmithHomes.com



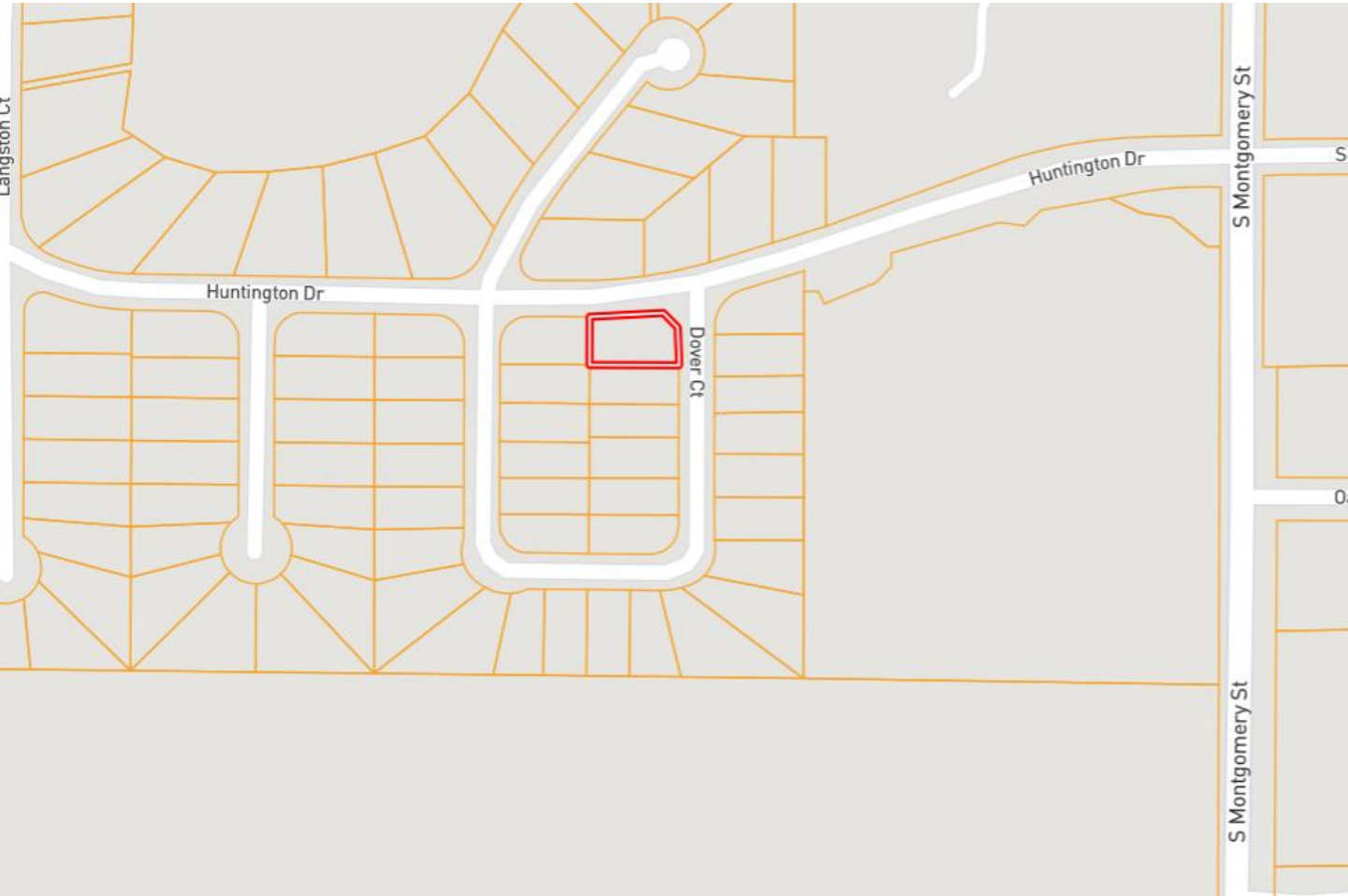
A Real Estate Expert You Can Trust

TomSmithLandandHomes.com

Information is believed to be accurate but not guaranteed.



Ownership Map



**WALKER
TRANUM**
REALTOR®

Office: 662.268.6333
Cell: 662.769.1442

Walker@TomSmithHomes.com



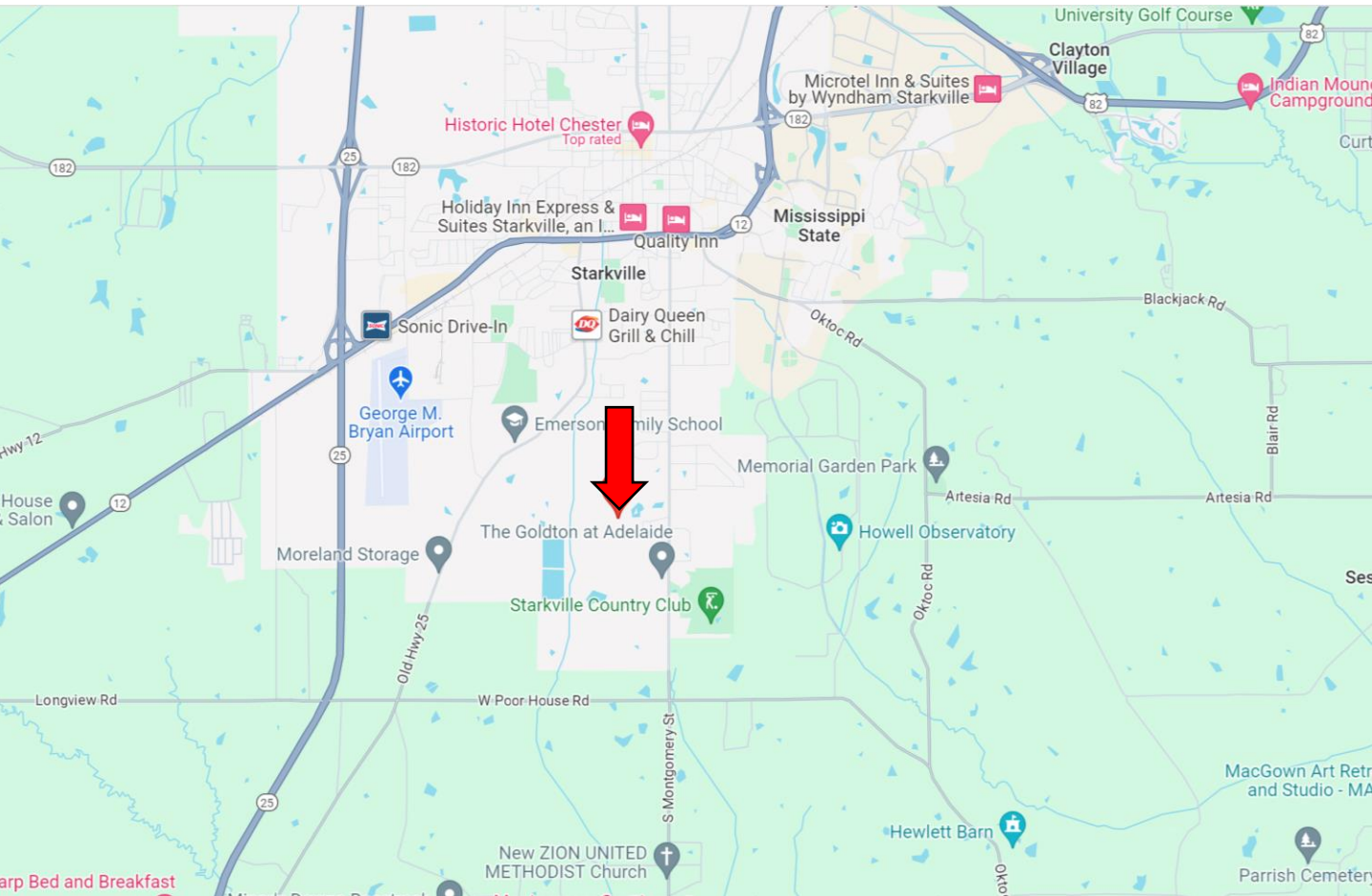
A Real Estate Expert You Can Trust

TomSmithLandandHomes.com

Information is believed to be accurate but not guaranteed.



Directional Map



Directions From Hwy 25 and Hwy 12 in Starkville: Travel Hwy 25 S for 3 miles. Turn left onto Longview Rd. and then continue onto W Poorhouse Rd. Travel 2.1 miles, then turn left onto S Montgomery St and travel 1.4 miles. Turn left onto Huntington Drive and travel .4 miles. Turn right onto Autumn Woods. The house will be on your left at the corner of Dover Ct. and Autumn Woods. [GOOGLE MAP LINK](#)



**WALKER
TRANUM**
REALTOR®

Office: 662.268.6333
Cell: 662.769.1442

Walker@TomSmithHomes.com



A Real Estate Expert You Can Trust

TomSmithLandandHomes.com

Information is believed to be accurate but not guaranteed.

