

Secluded Hunting Tract or Homesite

13.8± Acres in Copiah County, MS



\$62,100

This remote 13.8+/- acre property is located in Copiah County, MS, right on the northern border of Lawrence County, MS. Tucked away on a peaceful road with minimal traffic minutes away from Highway 27, this is the perfect getaway spot. The property primarily consists of hardwoods and pines. Embrace the opportunity to make it your own, envisioning a camp surrounded by the beauty of nature. Ideal for deer hunting, consider adding a couple of food plots to enhance the experience. Southern Pine is the electricity provider, and the Copiah Water Association provides community water, adding to the convenience of this peaceful retreat. Call Chad to schedule your private showing today!



**CHAD
WILSON**
REALTOR®

Office: 601.898.2772
Cell: 601.750.1970
Chad@TomSmithLand.com



A Real Estate Expert You Can Trust

TomSmithLandandHomes.com

Information is believed to be accurate but not guaranteed.





CHAD WILSON

REALTOR®

Office: 601.898.2772

Cell: 601.750.1970

Chad@TomSmithLand.com



A Real Estate Expert You Can Trust

TomSmithLandandHomes.com

Information is believed to be accurate but not guaranteed.



AERIAL MAP



[Click Here for an Interactive Map](#)

CHAD WILSON

REALTOR®

Office: 601.898.2772

Cell: 601.750.1970

Chad@TomSmithLand.com



A Real Estate Expert You Can Trust

TomSmithLandandHomes.com

Information is believed to be accurate but not guaranteed.



OWNERSHIP MAP



CHAD WILSON

REALTOR®

Office: 601.898.2772

Cell: 601.750.1970

Chad@TomSmithLand.com



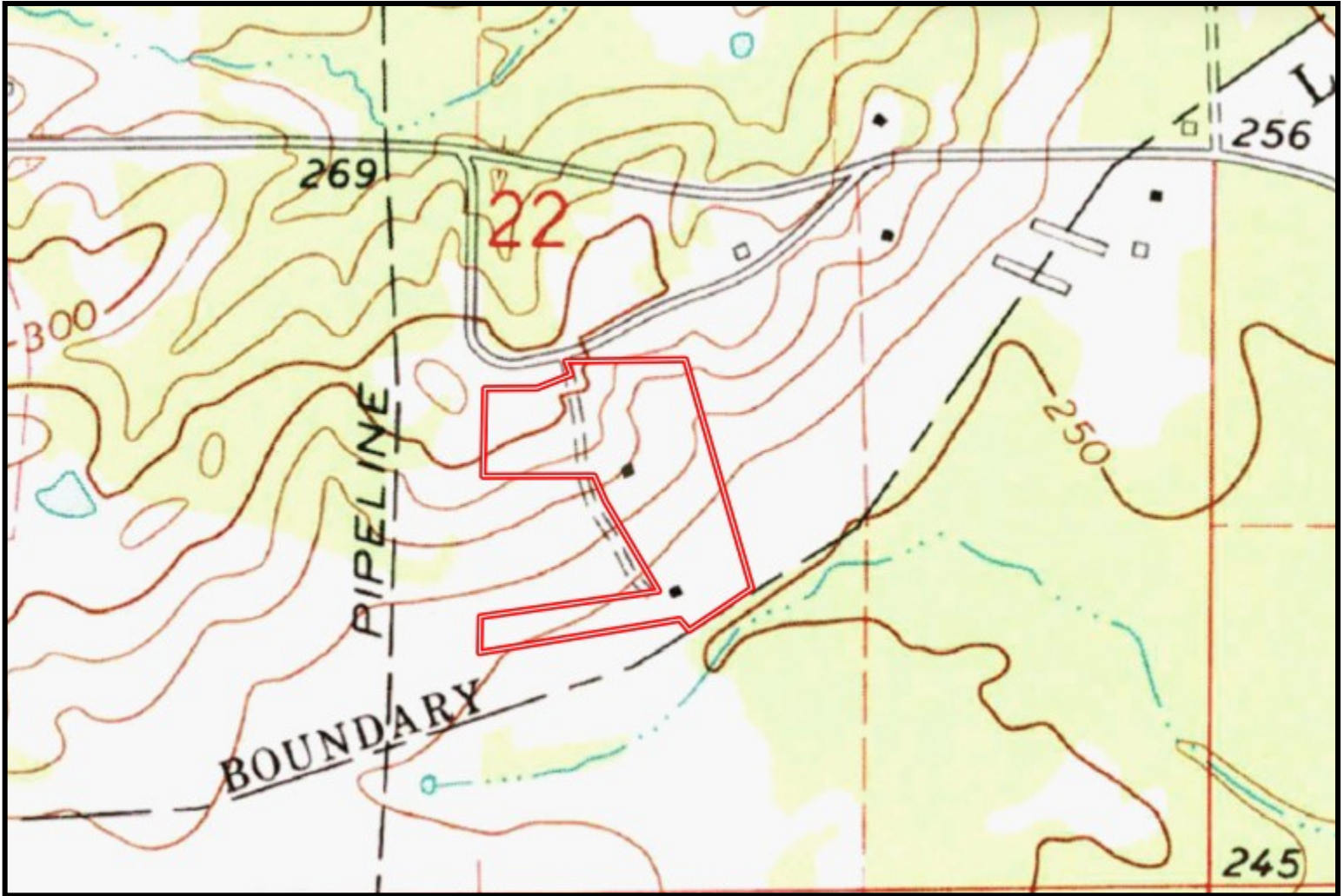
A Real Estate Expert You Can Trust

TomSmithLandandHomes.com

Information is believed to be accurate but not guaranteed.



TOPO MAP



CHAD WILSON

REALTOR®

Office: 601.898.2772

Cell: 601.750.1970

Chad@TomSmithLand.com



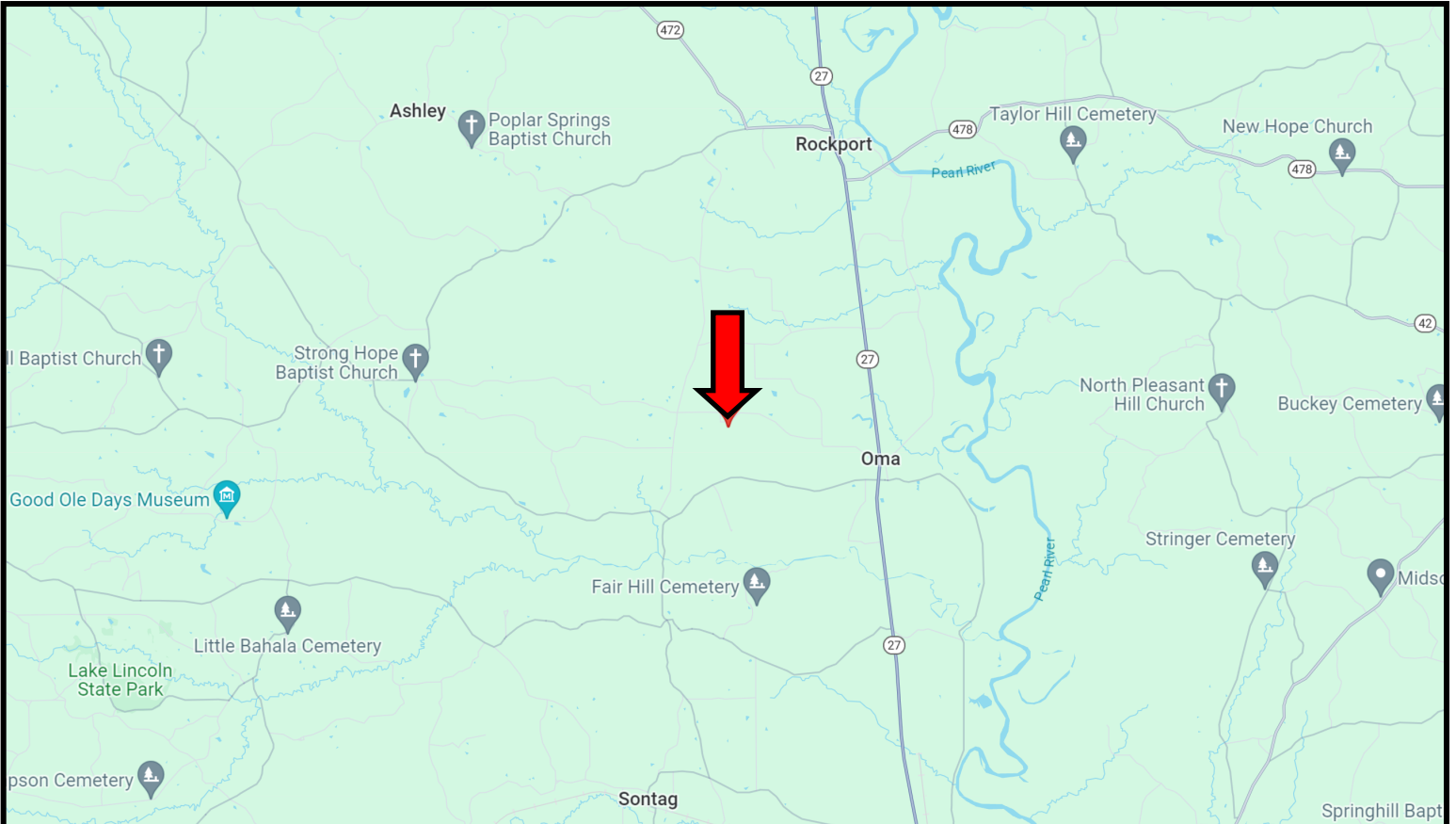
A Real Estate Expert You Can Trust

TomSmithLandandHomes.com

Information is believed to be accurate but not guaranteed.



DIRECTIONAL MAP



DIRECTIONS FROM ROCKPORT, MS: Travel south on Hwy 27 towards Hwy 478 for 4.7 miles. Turn right onto Mildred Little Road and travel 1 mile. Turn left onto Bobby Kennedy Road and travel 1.2 miles. Continue onto King Road, then turn left onto Williamson Road. After .2 miles, the property will be on your left. [GOOGLE MAP LINK](#)

1048 Williamson Rd, Wesson, MS 39191



**CHAD
WILSON**
REALTOR®

Office: 601.898.2772
Cell: 601.750.1970
Chad@TomSmithLand.com



A Real Estate Expert You Can Trust

TomSmithLandandHomes.com

Information is believed to be accurate but not guaranteed.

