

4-Bedroom, 2-Bathroom Home | \$165,000

811 Farmer Street Cleveland, MS | Bolivar County



This spacious, 1,705± SF, four-bedroom, two-bathroom home offers abundant natural light streaming through its numerous windows. Located on a generous 0.39± acre lot in Bolivar County, it provides privacy with a tall fence enclosing the backyard and a welcoming patio area. Perfect for entertaining, the kitchen, breakfast nook, and dining room provide plenty of space. Built-in storage throughout the 1929 home adds convenience and organization. Call Tracey Bell to schedule your private showing!



**TRACEY
BELL**

MANAGING BROKER

Office: 662.441.2500

Cell: 662.719.4720

Tracey@TomSmithLand.com



Expect More. Get More.

A Real Estate Expert You Can Trust

TomSmithLandandHomes.com

Information is believed to be accurate but not guaranteed.





**TRACEY
BELL**

MANAGING BROKER

Office: 662.441.2500

Cell: 662.719.4720

Tracey@TomSmithLand.com



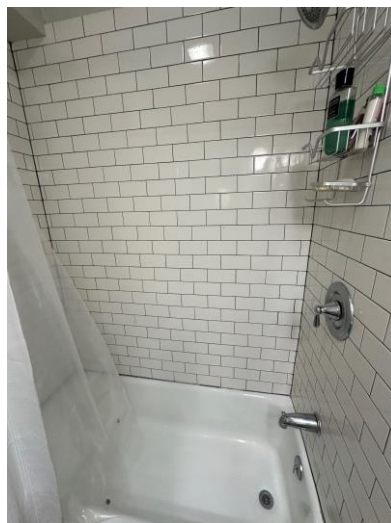
A Real Estate Expert You Can Trust
TomSmithLandandHomes.com

Information is believed to be accurate but not guaranteed.





- 4 Bedrooms
- 2 Bathrooms
- Ample Natural Light
- Privacy Fence
- Built-in Storage
- Gas Range
- Formal Dining Room
- Breakfast Nook
- Hardwood Floors
- Built in 1929
- 1,705± SF



**TRACEY
BELL**
MANAGING BROKER
Office: 662.441.2500
Cell: 662.719.4720
Tracey@TomSmithLand.com

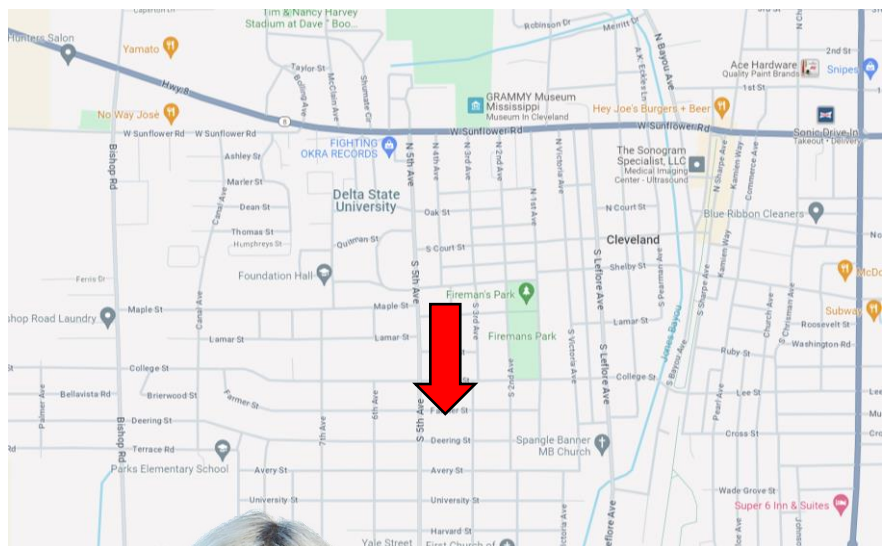
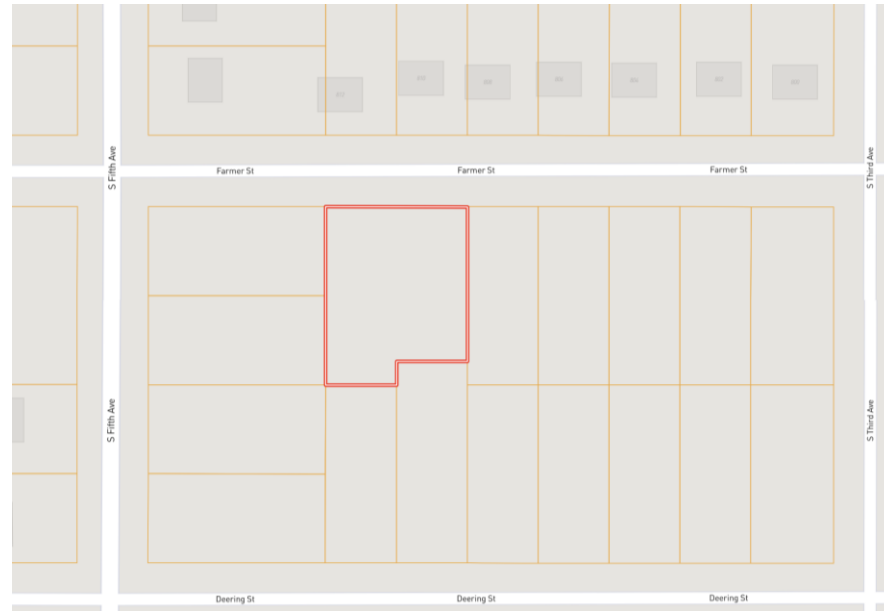


A Real Estate Expert You Can Trust
TomSmithLandandHomes.com

Information is believed to be accurate but not guaranteed.



MAPS | [Click for Interactive Map](#)



Address: 811 Farmer Street, Cleveland, MS 38732

Directions from Hwy 8 & Hwy 61 in Cleveland, MS:
Travel west on E. Sunflower Road for 1 mile. Turn left onto N. 5th Avenue. After 0.6 miles, turn left onto Farmer Street. The home will be on the right after 259 feet. [Click for Google Maps.](#)



TRACEY BELL
MANAGING BROKER
Office: 662.441.2500
Cell: 662.719.4720
Tracey@TomSmithLand.com



A Real Estate Expert You Can Trust
TomSmithLandandHomes.com

Information is believed to be accurate but not guaranteed.

