

Country Home with Acreage

2.4± Acres in Newton County, MS



406 Lawrence Conehatta Road Lawrence, MS 39336

\$299,000

- 2.4± Acres in Newton County, MS
- Three Bedroom/2 Bathroom, 2,357 SF Home
- Spacious Bonus Room
- Large Family Room with Vaulted Ceilings
- Split-Plan with Lots of Privacy
- Large Laundry Room and Pantry
- Metal Fence with Automatic Double Gates
- Driveway Leads to 2-Car Garage
- Rare Blend of Comfortable Living in Newton County, MS

Additional Acreage Available



**CHAD
WILSON**
REALTOR®

Office: 601.898.2772

Cell: 601.750.1970

Chad@TomSmithLand.com



A Real Estate Expert You Can Trust

TomSmithLandandHomes.com

Information is believed to be accurate but not guaranteed.





Welcome to your new home—a cozy brick residence with 2.4 acres that offers three bedrooms, two baths, and a spacious bonus room that could easily become a 4th bedroom. With 2,357 sq ft of living space, this property offers comfort and practicality. Inside, a large family room with vaulted ceilings creates an inviting atmosphere. The main bedroom features double vanities, a walk-in shower, and a sizable tub for relaxation. The split-bedroom plan ensures privacy for all. The kitchen is roomy and functional, making meal preparation a breeze. A large walk-in laundry room adds convenience to your daily routine. As you approach the property, a beautiful metal fence with automatic double gates welcomes you. The roomy driveway leads to a 2-car garage, completing the convenient and practical layout. Don't miss the opportunity to make it yours. Schedule a viewing and experience this home's charm and possibilities. Up to an additional 177± acres could be purchased with this home. The barns could also be purchased with the house; they are not included in this listing. Call Chad for your private showing today!

CHAD WILSON

REALTOR®

Office: 601.898.2772

Cell: 601.750.1970

Chad@TomSmithLand.com



A Real Estate Expert You Can Trust

TomSmithLandandHomes.com

Information is believed to be accurate but not guaranteed.





CHAD WILSON
REALTOR®
Office: 601.898.2772
Cell: 601.750.1970
Chad@TomSmithLand.com



A Real Estate Expert You Can Trust
TomSmithLandandHomes.com

Information is believed to be accurate but not guaranteed.





CHAD WILSON

REALTOR®

Office: 601.898.2772

Cell: 601.750.1970

Chad@TomSmithLand.com



A Real Estate Expert You Can Trust

TomSmithLandandHomes.com

Information is believed to be accurate but not guaranteed.





CHAD WILSON
REALTOR®
Office: 601.898.2772
Cell: 601.750.1970
Chad@TomSmithLand.com



A Real Estate Expert You Can Trust
TomSmithLandandHomes.com

Information is believed to be accurate but not guaranteed.



AERIAL MAP



[Click Here for an Interactive Map](#)

CHAD WILSON

REALTOR®

Office: 601.898.2772

Cell: 601.750.1970

Chad@TomSmithLand.com



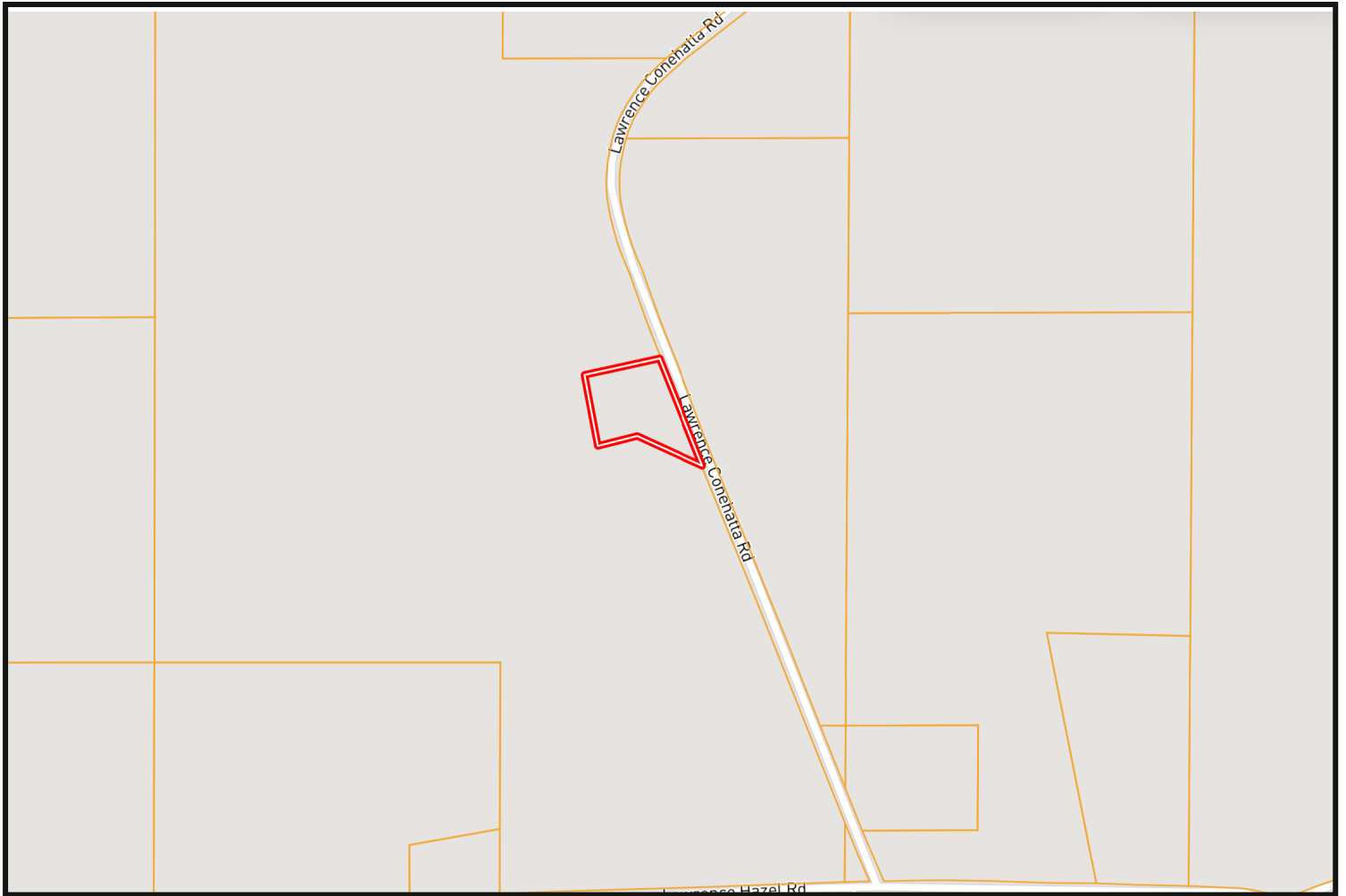
A Real Estate Expert You Can Trust

TomSmithLandandHomes.com

Information is believed to be accurate but not guaranteed.



OWNERSHIP MAP



CHAD WILSON

REALTOR®

Office: 601.898.2772

Cell: 601.750.1970

Chad@TomSmithLand.com



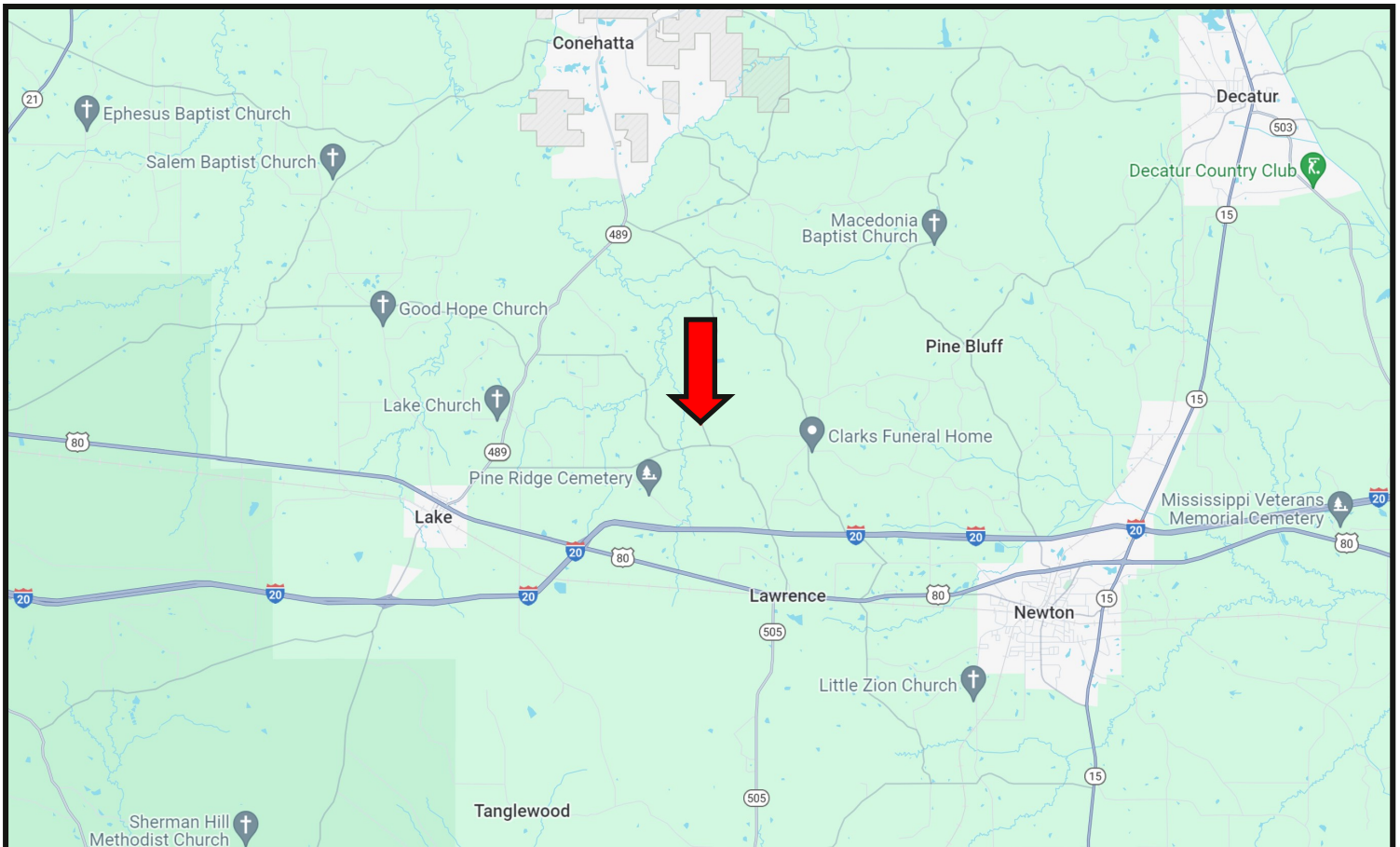
A Real Estate Expert You Can Trust

TomSmithLandandHomes.com

Information is believed to be accurate but not guaranteed.



DIRECTIONAL MAP



DIRECTIONS FROM I-20 IN LAKE, MS: Take exit 96 towards Lake and turn left onto Lake-Norris Road. Continue onto Steve Lee Drive, and travel 1.5 miles. Turn left onto Hwy 489 then turn right onto Old Hwy 80 E and travel 3 miles. Turn right onto Lawrence Hazel Road and travel .6 miles. Turn left onto Lawrence Conehatta Road. After .4 miles, the property entrance will be on your left [GOOGLE MAP LINK](#)

406 Lawrence Conehatta Road Lawrence, MS 39336



**CHAD
WILSON**
REALTOR®

Office: 601.898.2772
Cell: 601.750.1970
Chad@TomSmithLand.com



A Real Estate Expert You Can Trust

TomSmithLandandHomes.com

Information is believed to be accurate but not guaranteed.

