

Recreational Homesite

27± Acres in Newton County, MS



\$121,500

Check out this excellent 27-acre tract of land in Newton County. The property features gently rolling hills adorned with a mix of hardwoods and pines, along with open pasture land. It's an ideal spot for a new home with power and water conveniently available on the road. The entire property is accessible from the road, offering easy entry. With its fenced perimeter, this land is well-suited for various uses. This could be the perfect opportunity if you've ever dreamt of having a mini farm. The property is equipped to raise a small group of livestock, making it a potential haven for those interested in farming. But that's not all - if you're into recreational activities or hunting, this land could be your haven of enjoyment. Imagine having your piece of nature to explore and unwind. Additionally, there's the option to acquire additional land if you need more space. Take advantage of this versatile and beautiful property!



**CHAD
WILSON**
REALTOR®

Office: 601.898.2772

Cell: 601.750.1970

Chad@TomSmithLand.com



A Real Estate Expert You Can Trust

TomSmithLandandHomes.com

Information is believed to be accurate but not guaranteed.





CHAD WILSON

REALTOR®

Office: 601.898.2772

Cell: 601.750.1970

Chad@TomSmithLand.com



A Real Estate Expert You Can Trust

TomSmithLandandHomes.com

Information is believed to be accurate but not guaranteed.



AERIAL MAP



[Click Here for an Interactive Map](#)

CHAD WILSON

REALTOR®

Office: 601.898.2772

Cell: 601.750.1970

Chad@TomSmithLand.com



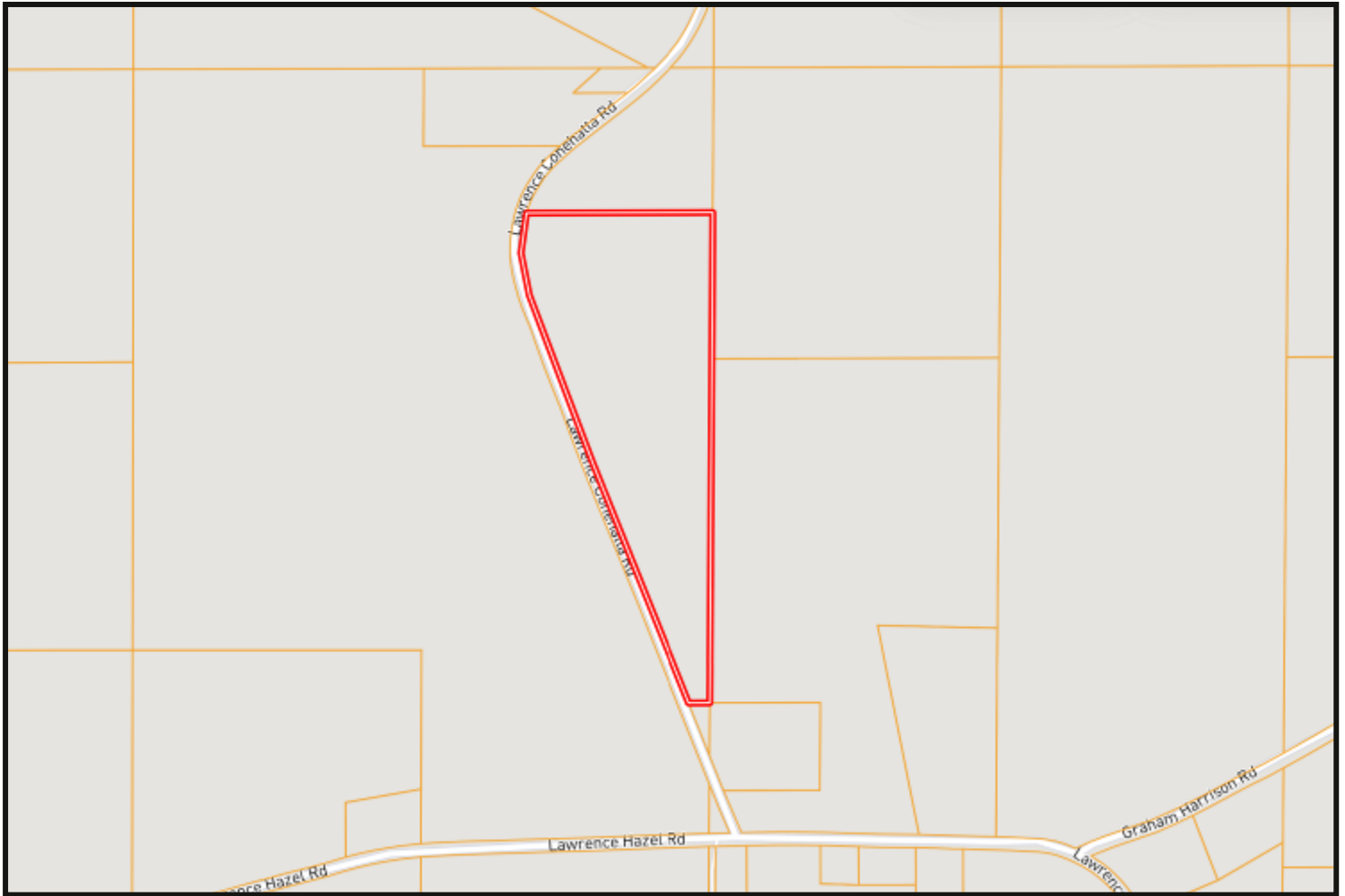
A Real Estate Expert You Can Trust

TomSmithLandandHomes.com

Information is believed to be accurate but not guaranteed.



OWNERSHIP MAP



CHAD WILSON

REALTOR®

Office: 601.898.2772

Cell: 601.750.1970

Chad@TomSmithLand.com



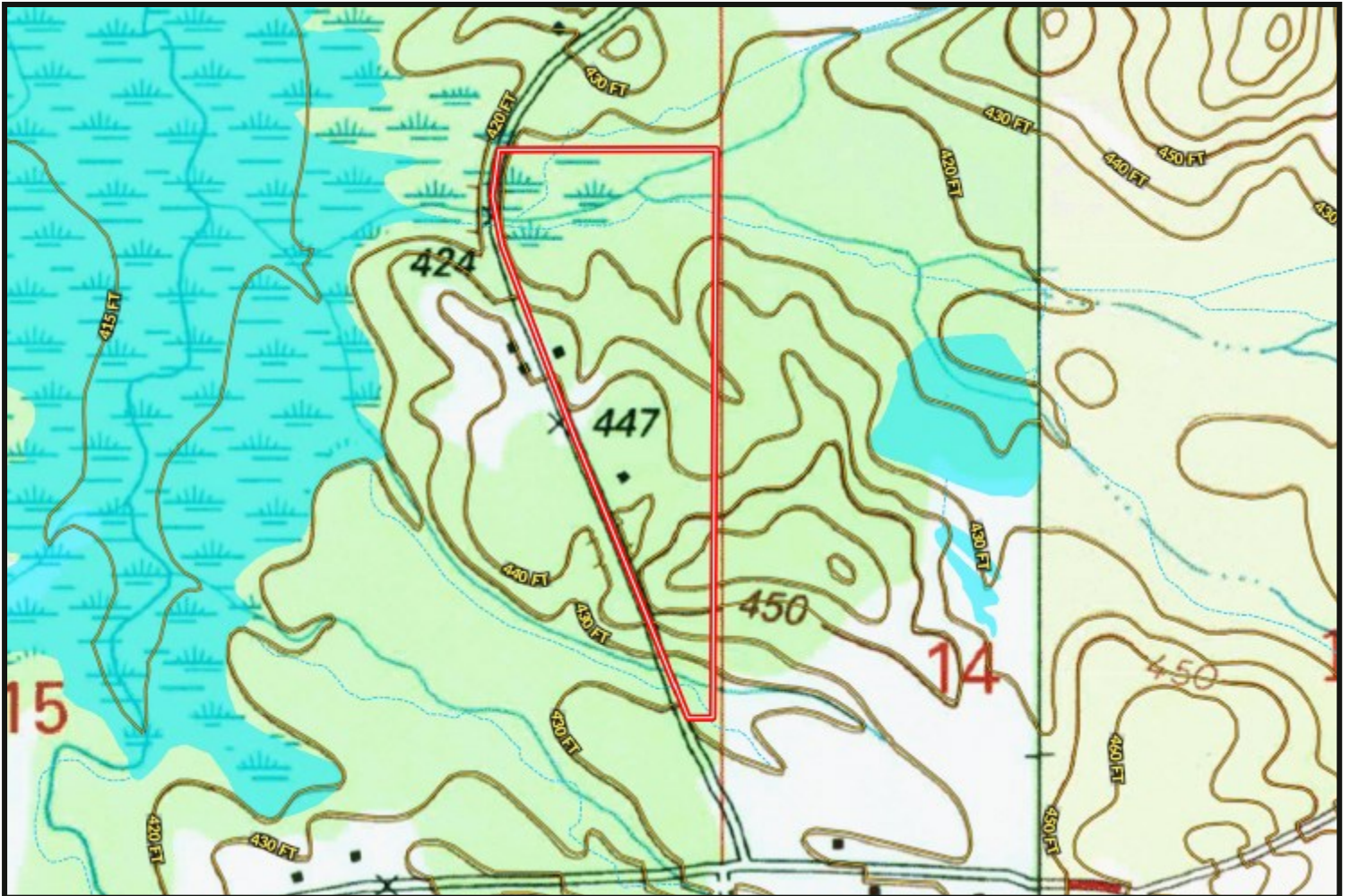
A Real Estate Expert You Can Trust

TomSmithLandandHomes.com

Information is believed to be accurate but not guaranteed.



TOPO MAP



CHAD WILSON

REALTOR®

Office: 601.898.2772

Cell: 601.750.1970

Chad@TomSmithLand.com



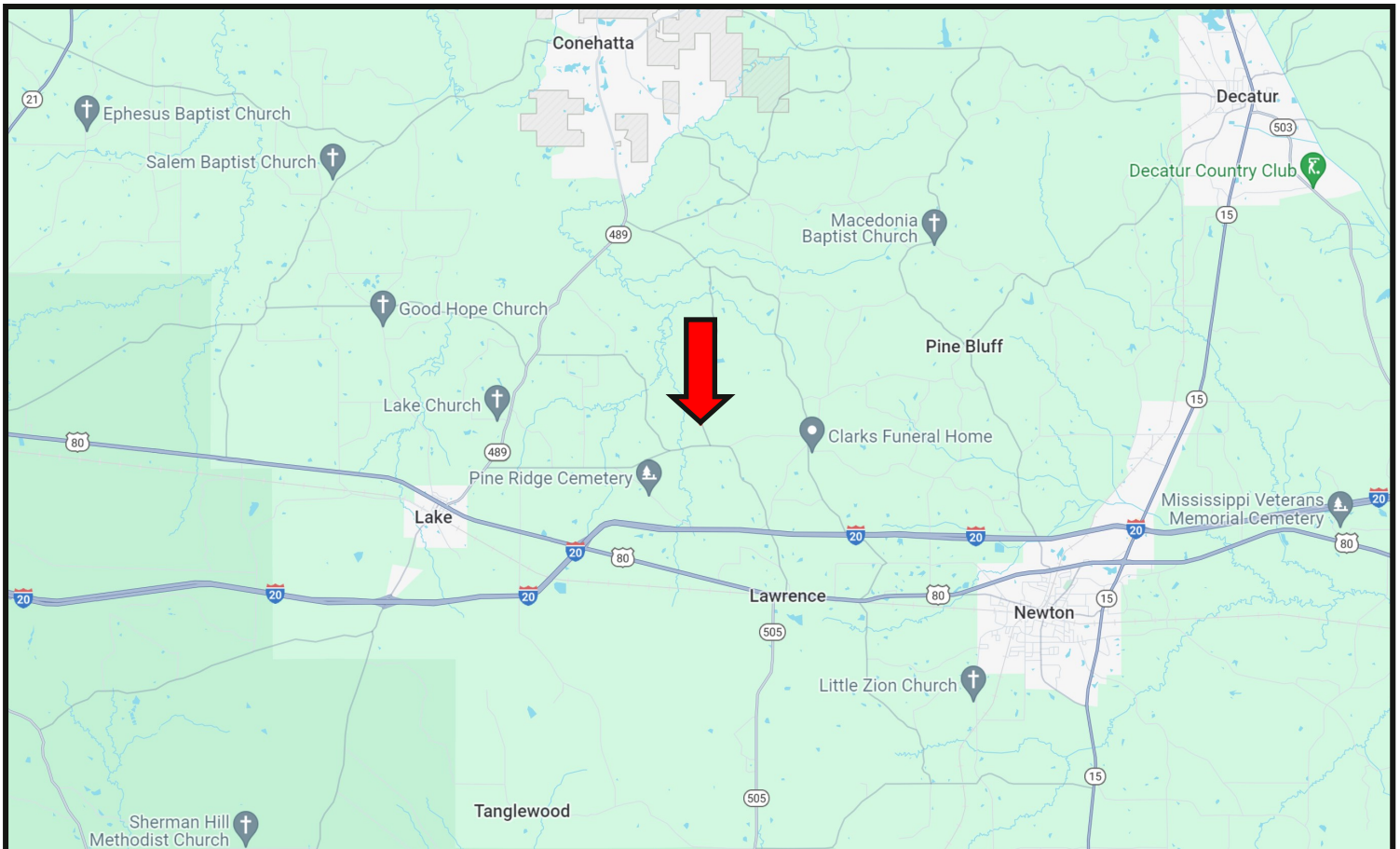
A Real Estate Expert You Can Trust

TomSmithLandandHomes.com

Information is believed to be accurate but not guaranteed.



DIRECTIONAL MAP



DIRECTIONS FROM I-20 IN LAKE, MS: Take exit 96 towards Lake and turn left onto Lake-Norris Road. Continue onto Steve Lee Drive, and travel 1.5 miles. Turn left onto Hwy 489 then turn right onto Old Hwy 80 E and travel 3 miles. Turn right onto Lawrence Hazel Road and travel .6 miles. Turn left onto Lawrence Conehatta Road. After .4 miles, the property entrance will be on your right. [GOOGLE MAP LINK](#)



**CHAD
WILSON**
REALTOR®

Office: 601.898.2772
Cell: 601.750.1970
Chad@TomSmithLand.com



A Real Estate Expert You Can Trust

TomSmithLandandHomes.com

Information is believed to be accurate but not guaranteed.

