

# BEAUTIFUL FAMILY HOME

*on 5± Acres in Humphreys County, MS*



\$274,500

- 2,576 SF HOME
- 4 BED/2.5 BATH
- TWO DENS FOR ENTERTAINING
- UPDATED KITCHEN WITH BREAKFAST AREA
- FORMAL DINING ROOM
- PLENTY OF STORAGE SPACE
- 4-CAR CARPORT
- BACKYARD OASIS WITH POOL
- SPACIOUS COVERED PATIO
- CONVENIENTLY LOCATED ONLY 10 MILES FROM HOLLANDALE AND 11 MILES FROM BELZONI



**BRUCE  
WEST**  
REALTOR®

Office: 662.441.2500

Cell: 662.873.3007

Bruce@TomSmithLand.com



**A Real Estate Expert You Can Trust**

TomSmithLandandHomes.com

Information is believed to be accurate but not guaranteed.





# *5± acres with a home in Humphreys County, MS*

10688 Highway 12 Isola, MS 39038



Welcome to this spacious 2,576 sq ft home sitting on 5± acres in Humphreys County, MS. This four-bedroom, 2 ½ bath with many amenities provides an ideal setting for comfortable living. This home has two dens for entertaining or enjoying a restful evening with a good book. The updated kitchen with a breakfast area adjoins a formal dining room for family meals or gatherings. The primary bedroom has ample space and three additional bedrooms for family or guests. There is also a dedicated laundry room and storage space for your convenience in your daily routine. The 4-car carport protects your automobiles year-round. Step outside to your private oasis. A beautiful pool is a great place to cool off on hot summer days, while a spacious covered patio is the perfect spot for entertaining or simply sitting and enjoying the outdoors. The home is sitting on 5± acres that could be used for gardening or other uses. The additional acreage is currently being rented to a local farmer. This property is 10 miles from Hollandale and 11 miles from Belzoni, providing easy access to these local communities. Call Bruce to schedule a showing today and make this property your home!

**BRUCE WEST**  
REALTOR®

Office: 662.441.2500

Cell: 662.873.3007

Bruce@TomSmithLand.com



**A Real Estate Expert You Can Trust**

TomSmithLandandHomes.com

Information is believed to be accurate but not guaranteed.





**BRUCE WEST**

REALTOR®

Office: 662.441.2500

Cell: 662.873.3007

Bruce@TomSmithLand.com



**A Real Estate Expert You Can Trust**

TomSmithLandandHomes.com

Information is believed to be accurate but not guaranteed.





**BRUCE WEST**  
REALTOR®  
Office: 662.441.2500  
Cell: 662.873.3007  
Bruce@TomSmithLand.com



**A Real Estate Expert You Can Trust**  
TomSmithLandandHomes.com

Information is believed to be accurate but not guaranteed.





**BRUCE WEST**

REALTOR®

Office: 662.441.2500

Cell: 662.873.3007

Bruce@TomSmithLand.com



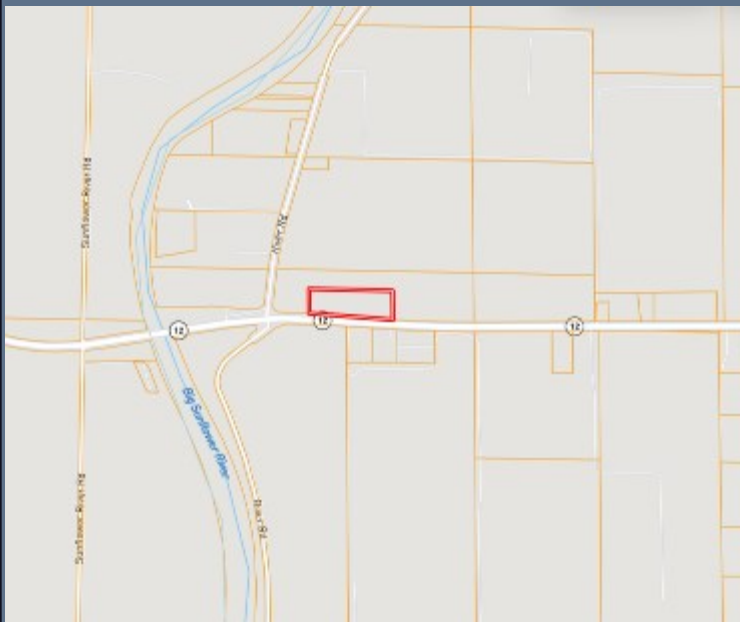
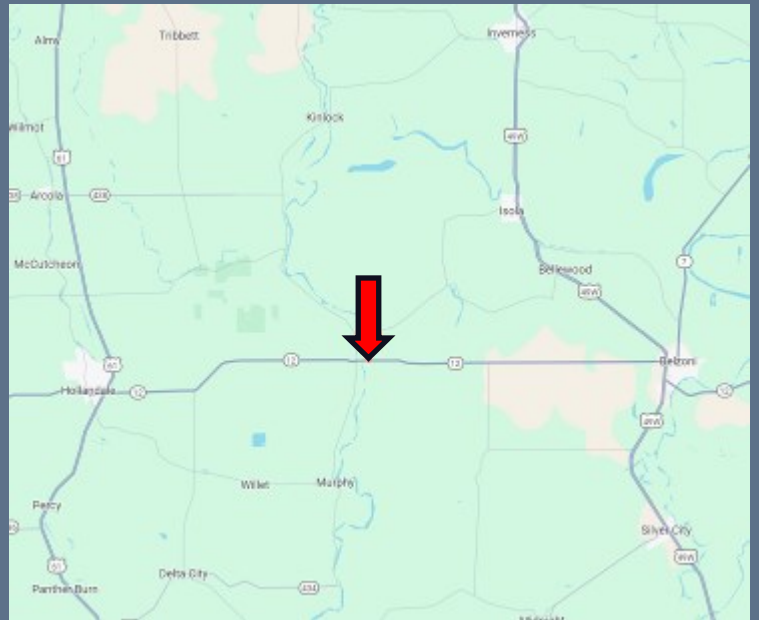
**A Real Estate Expert You Can Trust**

TomSmithLandandHomes.com

Information is believed to be accurate but not guaranteed.



# Property Maps



## ↖ Landld Map Link

### DIRECTIONS FROM HWY 61 AND HWY 12 IN HOLLANDALE, MS:

Travel Hwy 12 towards Belzoni for 10.4 miles. The property will be on the left.

10688 Hwy 12 Isola, MS 39038

[Click for Google Map Link](#)



**BRUCE  
WEST**  
REALTOR®

Office: 662.441.2500

Cell: 662.873.3007

Bruce@TomSmithLand.com



## A Real Estate Expert You Can Trust

TomSmithLandandHomes.com

Information is believed to be accurate but not guaranteed.

