

6.78± ACRE PROPERTY LOWNDES COUNTY, MS

\$37,000

Are you looking for a place to build a home or develop in Lowndes County? This 6.78+/- acres on the outskirts of Columbus is what you are looking for. This property consists of young mixed timber and a nice flat topography. It could be used for multiple houses, trailers, or even an RV park. You could also build a shop or run any type of business you can think of. There are over 600 feet of road frontage on Highway 373, and all utilities are available, too. All this is just minutes from Columbus and the Columbus Air Force Base. To schedule a private showing, call or text Walker!

Directions from Hwy 82 and Hwy 45 in Columbus, MS: Merge onto Hwy 45 and travel 4 miles. Turn left onto MS-373 North/MS-50 West and travel 0.5 miles. Continue straight onto MS-373 North for 1 mile. The property will be on your right. [Google Map Link](#)



**WALKER
TRANUM**
REALTOR®

Office: 662.268.6333
Cell: 662.769.1442

Walker@TomSmithHomes.com

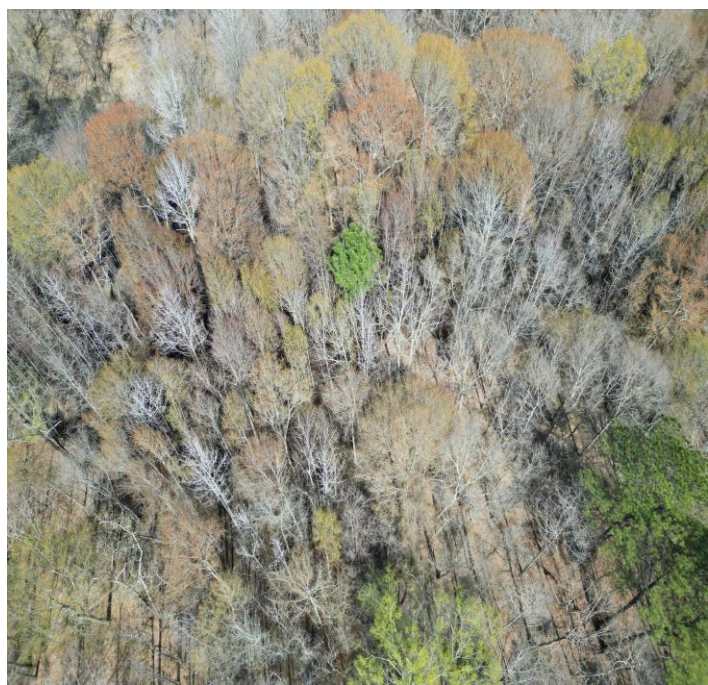


A Real Estate Expert You Can Trust

TomSmithLandandHomes.com

Information is believed to be accurate but not guaranteed.





**WALKER
TRANUM**
REALTOR®

Office: 662.268.6333

Cell: 662.769.1442

Walker@TomSmithHomes.com



A Real Estate Expert You Can Trust

TomSmithLandandHomes.com

Information is believed to be accurate but not guaranteed.



Aerial Map



Click [Here](#) for an Interactive Map Link



**WALKER
TRANUM**
REALTOR®

Office: 662.268.6333
Cell: 662.769.1442

Walker@TomSmithHomes.com



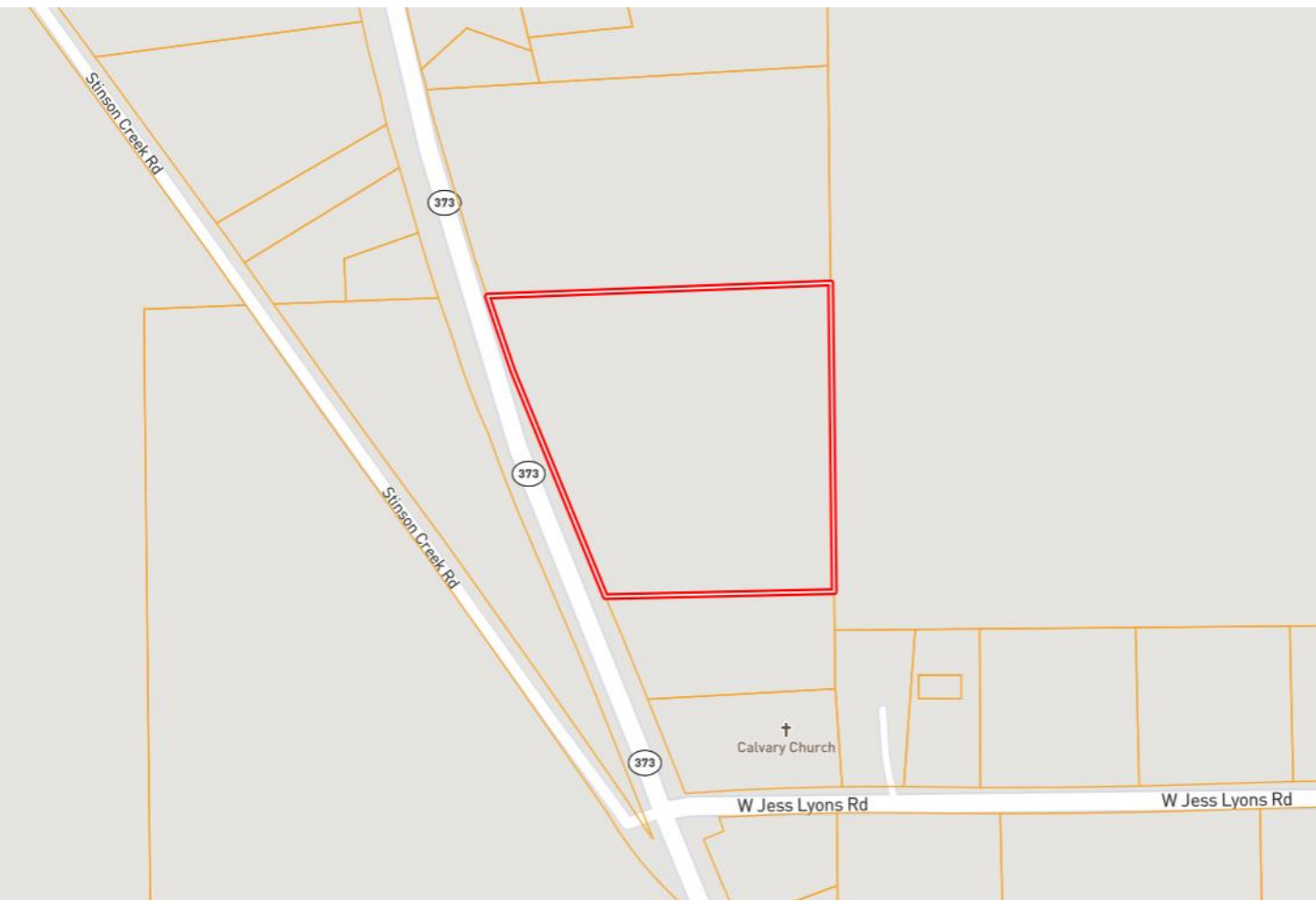
A Real Estate Expert You Can Trust

TomSmithLandandHomes.com

Information is believed to be accurate but not guaranteed.



Ownership Map



**WALKER
TRANUM**
REALTOR®

Office: 662.268.6333
Cell: 662.769.1442

Walker@TomSmithHomes.com



A Real Estate Expert You Can Trust

TomSmithLandandHomes.com

Information is believed to be accurate but not guaranteed.



Flood Map



**WALKER
TRANUM**
REALTOR®

Office: 662.268.6333
Cell: 662.769.1442

Walker@TomSmithHomes.com



A Real Estate Expert You Can Trust

TomSmithLandandHomes.com

Information is believed to be accurate but not guaranteed.



Topography Map



**WALKER
TRANUM**
REALTOR®

Office: 662.268.6333
Cell: 662.769.1442

Walker@TomSmithHomes.com



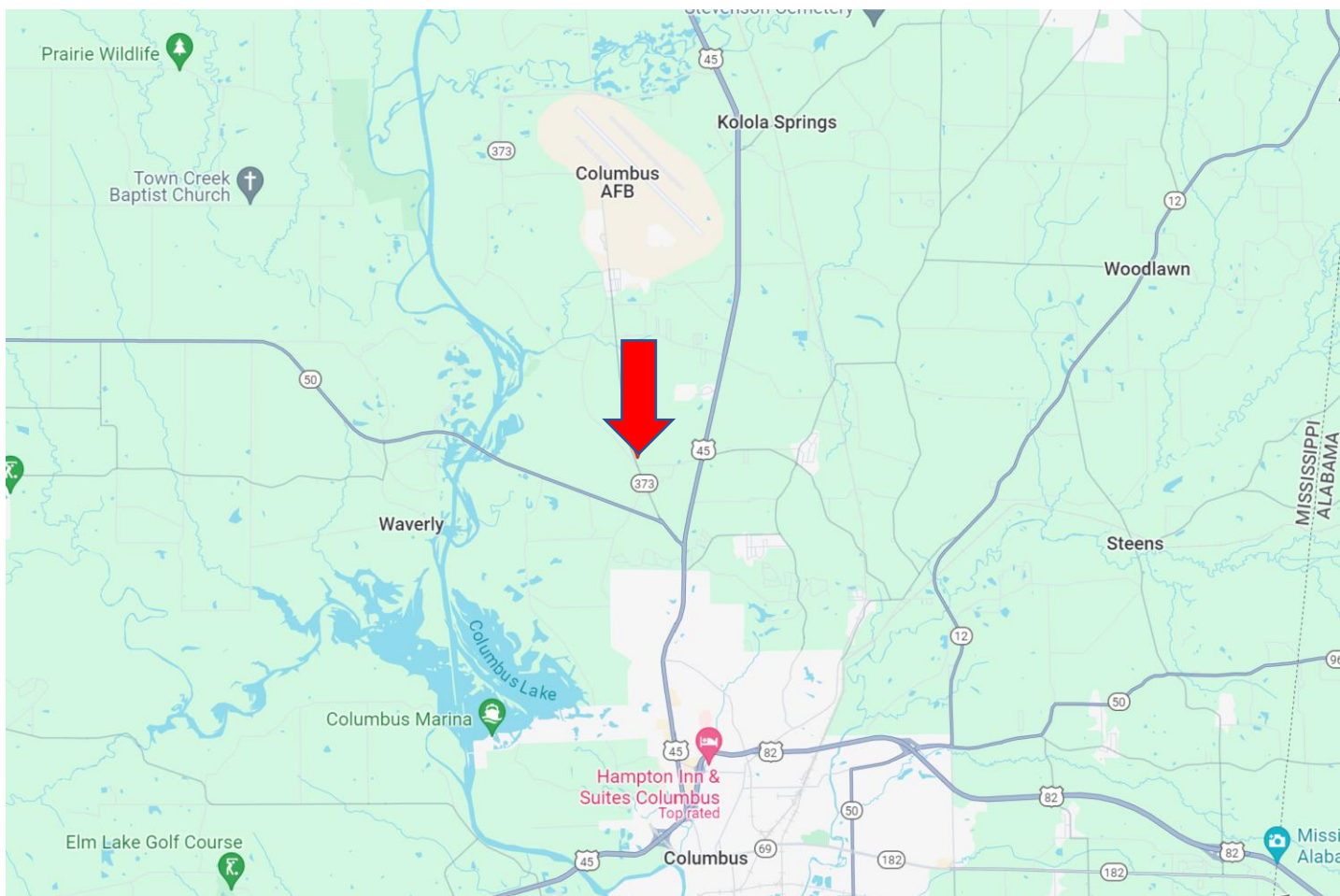
A Real Estate Expert You Can Trust

TomSmithLandandHomes.com

Information is believed to be accurate but not guaranteed.



Directional Map



Directions from Hwy 82 and Hwy 45 in Columbus, MS: Merge onto Hwy 45 and travel 4 miles. Turn left onto MS-373 North/MS-50 West and travel 0.5 miles. Continue straight onto MS-373 North for 1 mile. The property will be on your right. [Google Map Link](#)



**WALKER
TRANUM**
REALTOR®

Office: 662.268.6333
Cell: 662.769.1442

Walker@TomSmithHomes.com



A Real Estate Expert You Can Trust

TomSmithLandandHomes.com

Information is believed to be accurate but not guaranteed.

