

# COUNTRY HOME ON 5+/- ACRES IN PIKE COUNTY, MS



4193 MUDDY SPRINGS ROAD MAGNOLIA, MS 39652

\$325,000

If you want all the advantages of being close to town while still having a country feel, this is the place for you! Come see this excellent 2,700+/- square foot home on 5+/- acres just outside of Magnolia, MS, in Pike County. The three-bedroom, two-bath home features a new metal roof, a two-vehicle carport, and central air and heat. Walk-in closets in each room provide ample storage space for all your belongings. If you are a horse lover, then look no further! Located just minutes from Interstate 55, this fantastic property features an eight-stall barn waiting for new residents to gallop around. The fenced pastures on this property offer ample space for horses to roam and graze. With their well-maintained grassy fields and sturdy fencing, the pastures provide a safe and secure environment, and a large covered concrete kennel is ready for your furry friends. The beautiful stone and cedar home sits behind an automatic gate and brick columns, providing an added security and convenience layer. Not only does it keep the property secure when you're away, but it also adds a touch of elegance and sophistication to the entrance. With the automatic gate, you can easily control who has access to your property, giving you peace of mind knowing that your home and belongings are protected. The warm and cozy home features a large, vaulted ceiling living room and a beautiful stone fireplace with a blower to warm the home on the coldest nights. The large kitchen offers plenty of room for multiple cooks and has a lovely breakfast nook. The proximity to Interstate 55 offers easy access to Magnolia, MS, and other nearby towns, making commuting and running errands a breeze. This convenient location allows residents to enjoy the benefits of small-town living with the amenities and conveniences of larger cities just a short drive away. Call Clif to schedule your tour today!

[4193 Muddy Springs Road Magnolia, MS 39652—Google Map Link](#)



**CLIF  
CANNON**  
REALTOR®

Office: 601.990.5070

Cell: 601.565.1070

[Clif@TomSmithLand.com](mailto:Clif@TomSmithLand.com)



## A Real Estate Expert You Can Trust

[TomSmithLandandHomes.com](http://TomSmithLandandHomes.com)

Information is believed to be accurate but not guaranteed.







**CLIF CANNON**

REALTOR®

Office: 601.990.5070

Cell: 601.565.1070

Clif@TomSmithLand.com



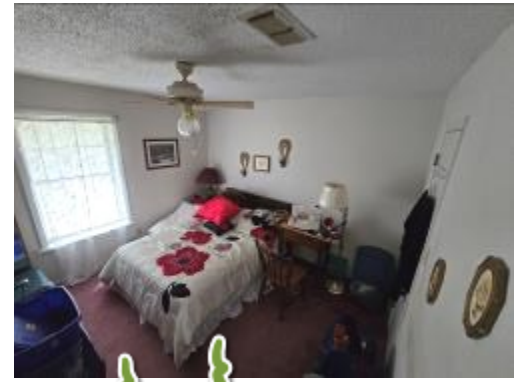
**A Real Estate Expert You Can Trust**

TomSmithLandandHomes.com

Information is believed to be accurate but not guaranteed.







**CLIF CANNON**

REALTOR®

Office: 601.990.5070

Cell: 601.565.1070

Clif@TomSmithLand.com



Expect More. Get More.

**A Real Estate Expert You Can Trust**

TomSmithLandandHomes.com

Information is believed to be accurate but not guaranteed.





# AERIAL MAP



## Interactive Map

**CLIF CANNON**

REALTOR®

Office: 601.990.5070

Cell: 601.565.1070

Clif@TomSmithLand.com



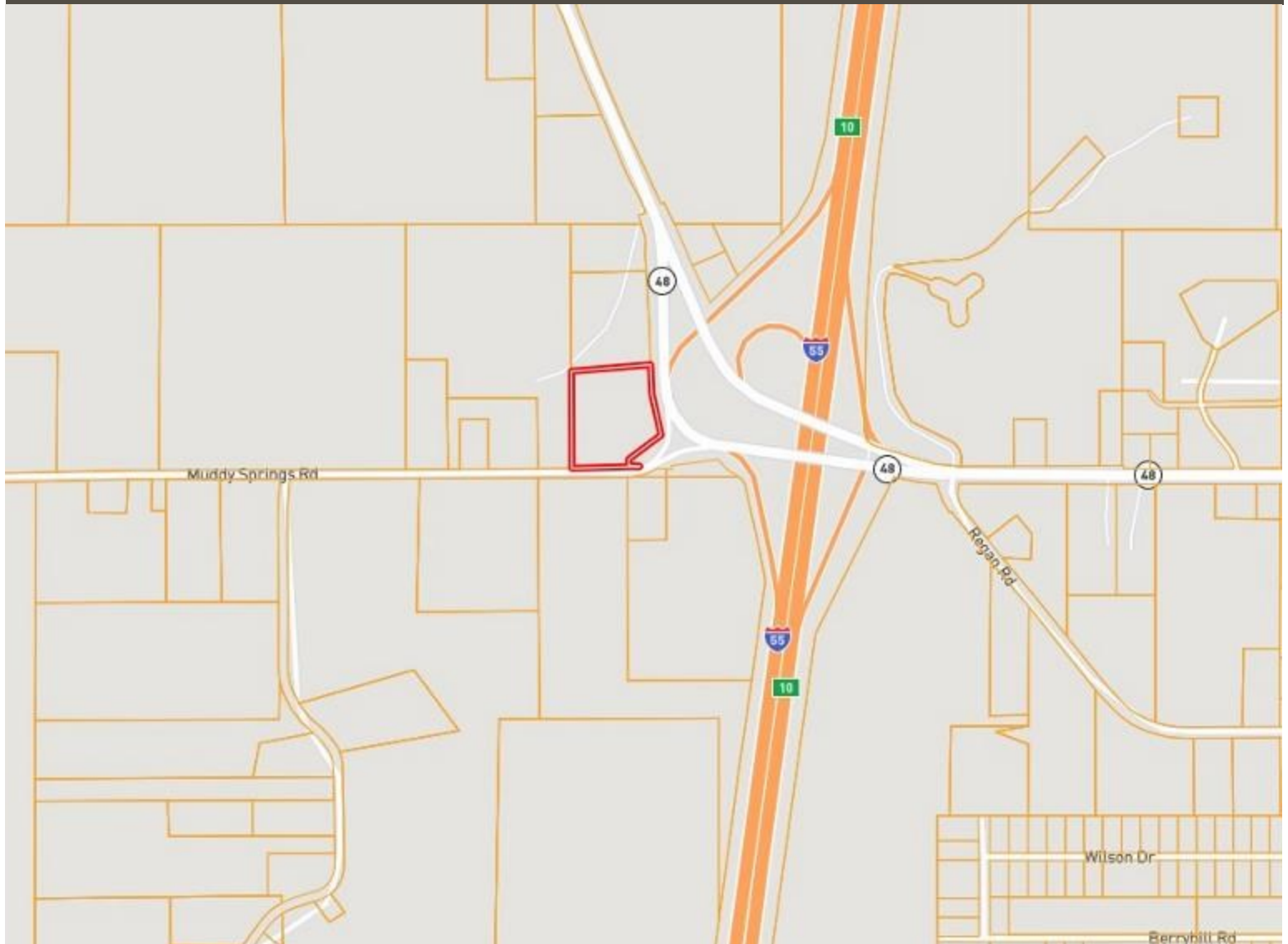
**A Real Estate Expert You Can Trust**

TomSmithLandandHomes.com

Information is believed to be accurate but not guaranteed.



# OWNERSHIP MAP



**CLIF CANNON**

REALTOR®

Office: 601.990.5070

Cell: 601.565.1070

Clif@TomSmithLand.com



**A Real Estate Expert You Can Trust**

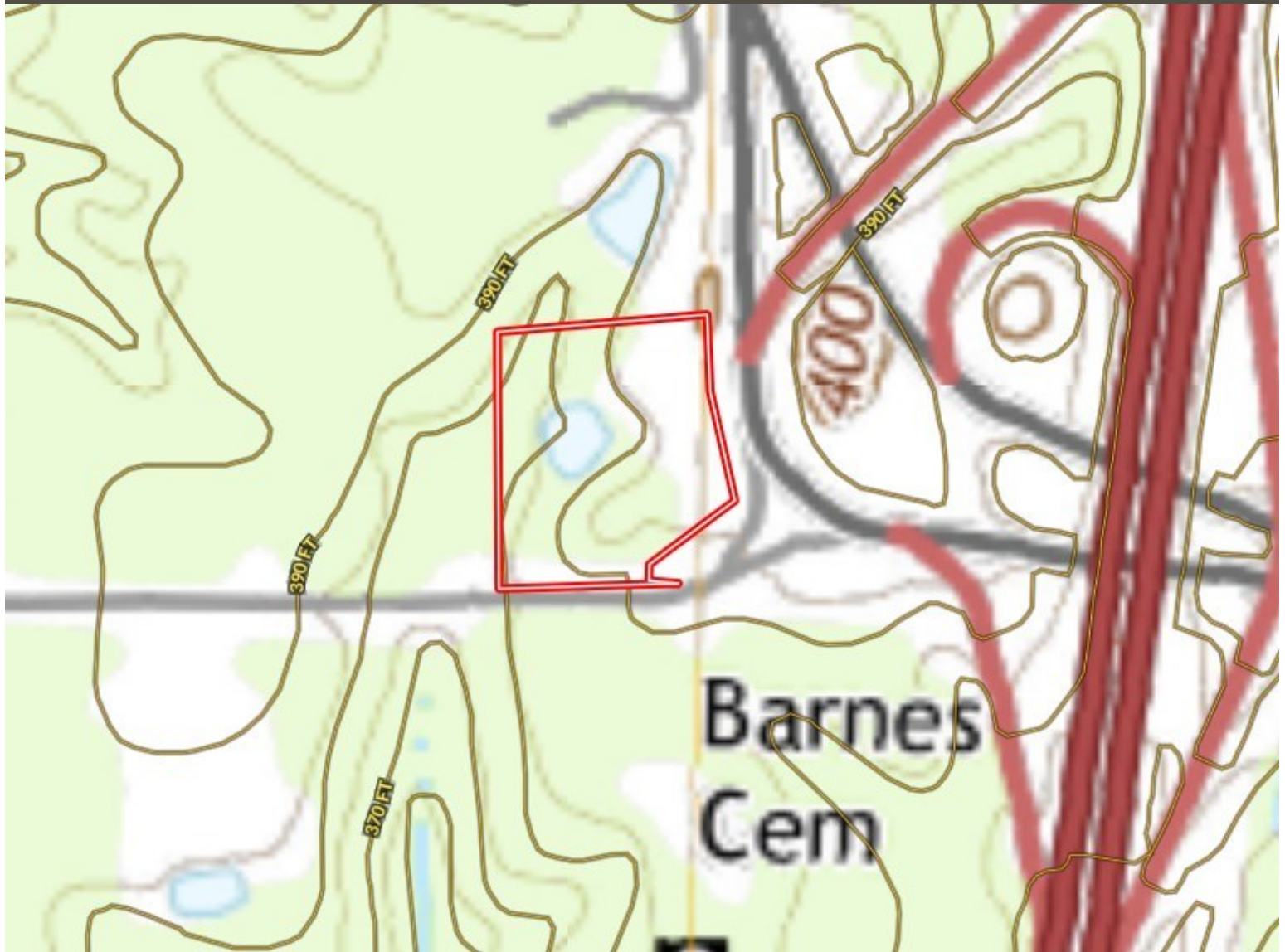
TomSmithLandandHomes.com

Information is believed to be accurate but not guaranteed.





# TOPOGRAPHIC MAP



**CLIF CANNON**

REALTOR®

Office: 601.990.5070

Cell: 601.565.1070

[Clif@TomSmithLand.com](mailto:Clif@TomSmithLand.com)



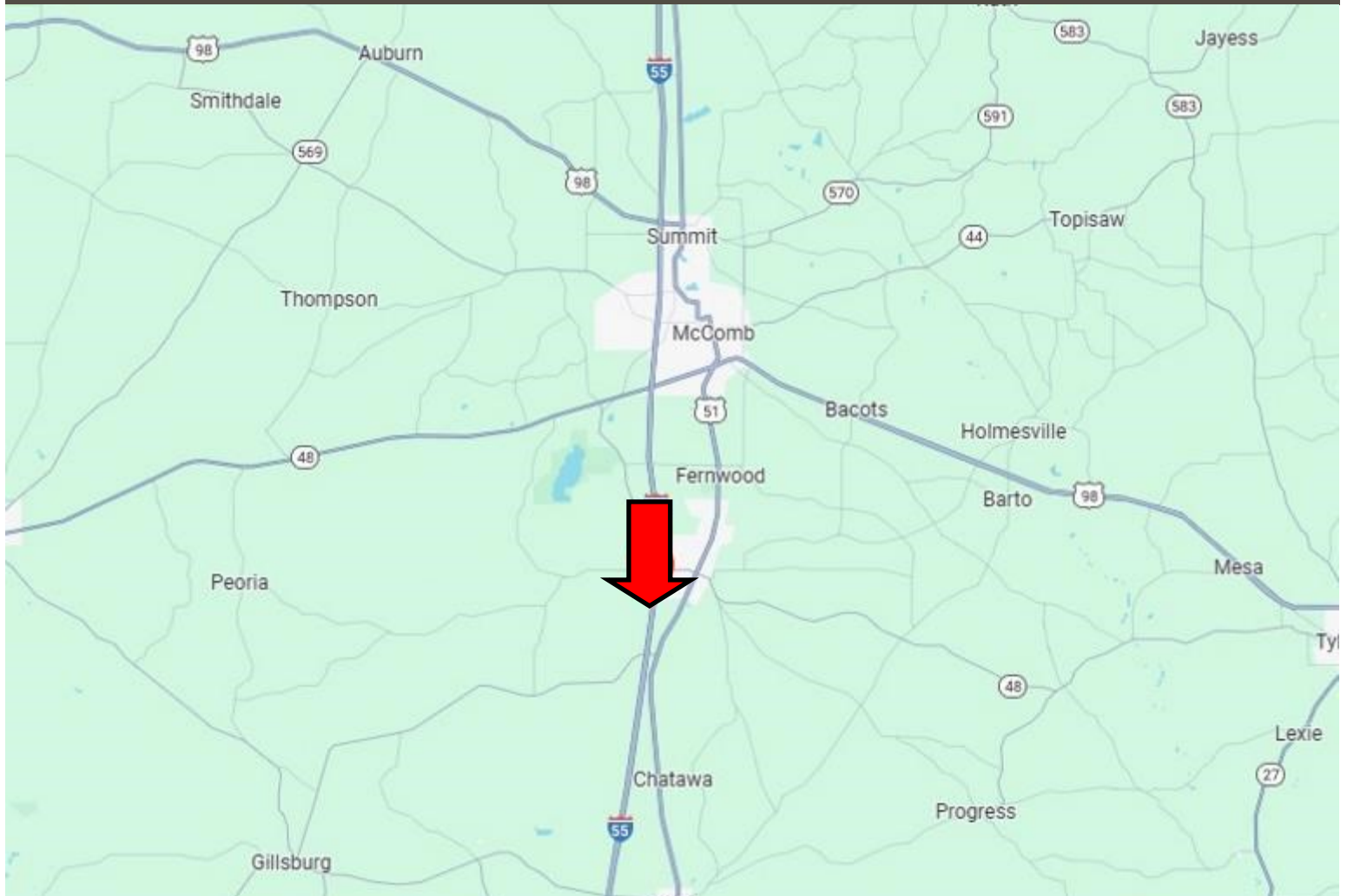
**A Real Estate Expert You Can Trust**

[TomSmithLandandHomes.com](http://TomSmithLandandHomes.com)

Information is believed to be accurate but not guaranteed.



# DIRECTIONAL MAP



**Directions from the intersection of US-98 and I-55 in McComb, MS:** Travel south on I-55 for 4.9 miles. Take exit 10 to merge onto MS-48 for .3 miles. Turn right onto Muddy Springs Road, the property will be immediately on the right.

**4193 Muddy Springs Road Magnolia, MS 39652—Google Map Link**



**CLIF  
CANNON**  
REALTOR®

Office: 601.990.5070

Cell: 601.565.1070

Clif@TomSmithLand.com



**A Real Estate Expert You Can Trust**

TomSmithLandandHomes.com

Information is believed to be accurate but not guaranteed.

