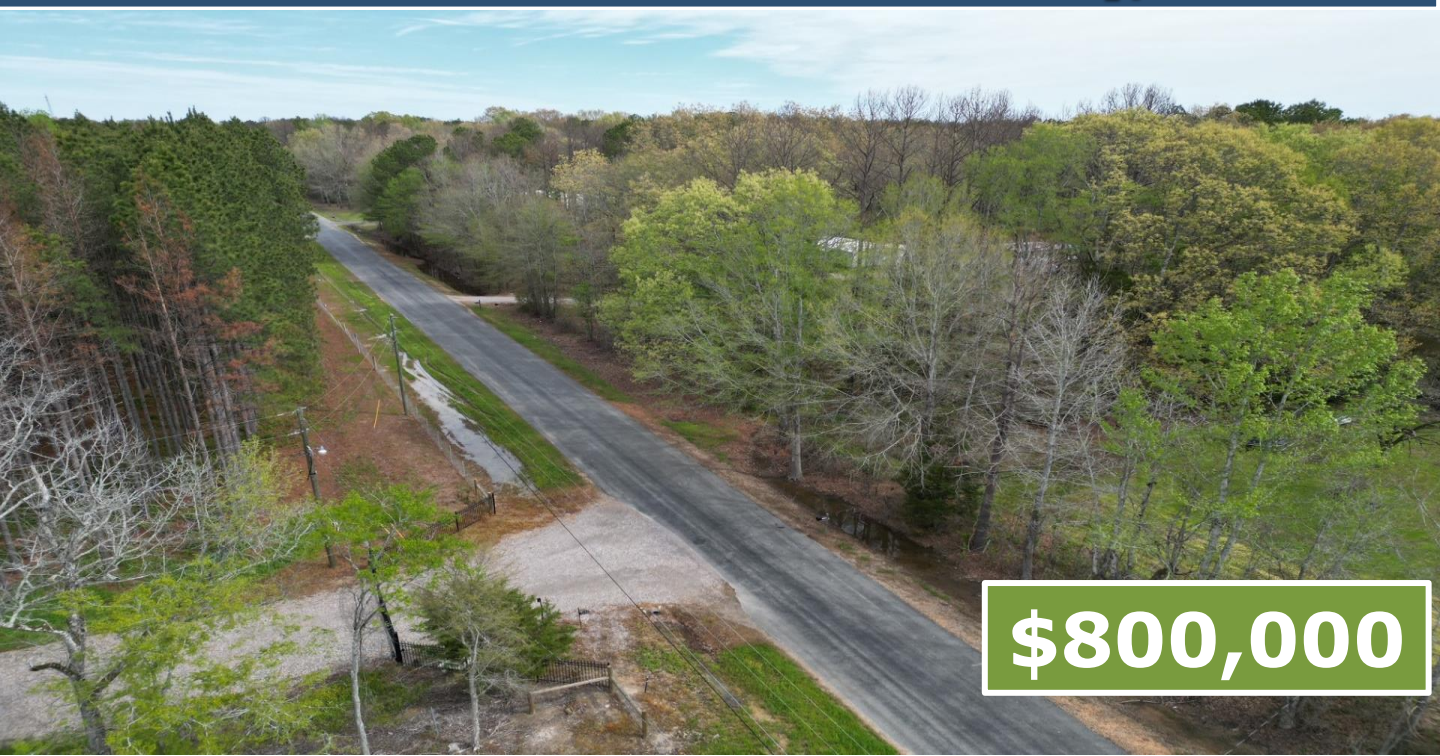


RECREATIONAL TRACT

40.34± Acres in Rankin County, MS



\$800,000

Are you looking for a place to build your dream home with room to play? This 40.34± acre Rankin County property is what you are looking for. This property is located just outside of Brandon, MS, and its location is hard to beat. The property is on the outskirts of the Jackson, MS metro area, the Ross Barnett Reservoir, and is just minutes to Highway 25 and Highway 43. There are over 100 feet of road frontage on Stump Ridge Road, and all utilities are available, too. This property has two access points off Stump Ridge Road, one on the north and one on the south. This tract consists of mixed timber, with some trails that help you navigate the property. To schedule a private showing, call or text Walker!

Directions from Hwy 25 and Sandhill Road: Take the exit for Hwy 471/Goshen Springs and turn right onto Sandhill Road. Travel 1.3 miles, then turn right onto Lawrence Road. Travel 1.2 miles, then turn right onto Stump Ridge Road. After .2 miles, the property will be on your right.



**WALKER
TRANUM**
REALTOR®

Office: 662.268.6333
Cell: 662.769.1442

Walker@TomSmithHomes.com

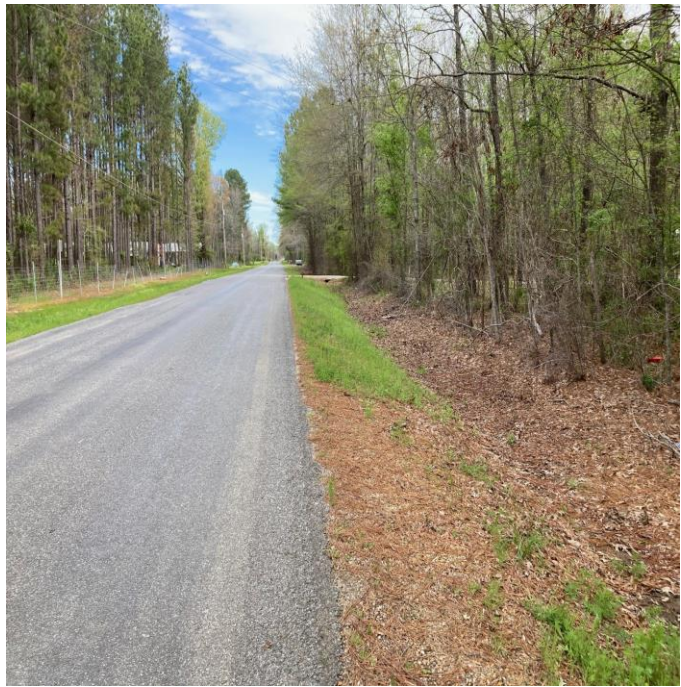
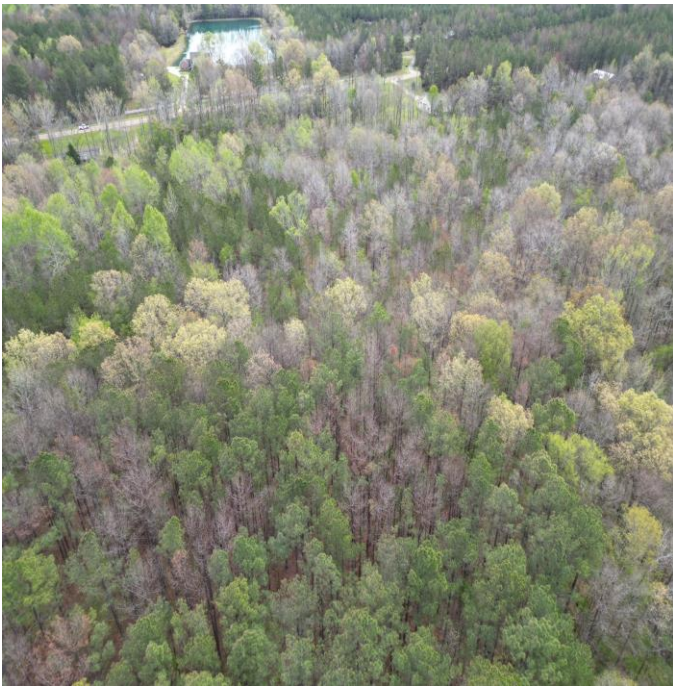


A Real Estate Expert You Can Trust

TomSmithLandandHomes.com

Information is believed to be accurate but not guaranteed.

2011-2023
BEST
BROKERAGES



**WALKER
TRANUM**
REALTOR®

Office: 662.268.6333
Cell: 662.769.1442

Walker@TomSmithHomes.com



A Real Estate Expert You Can Trust

TomSmithLandandHomes.com

Information is believed to be accurate but not guaranteed.





**WALKER
TRANUM**
REALTOR®

Office: 662.268.6333
Cell: 662.769.1442

Walker@TomSmithHomes.com



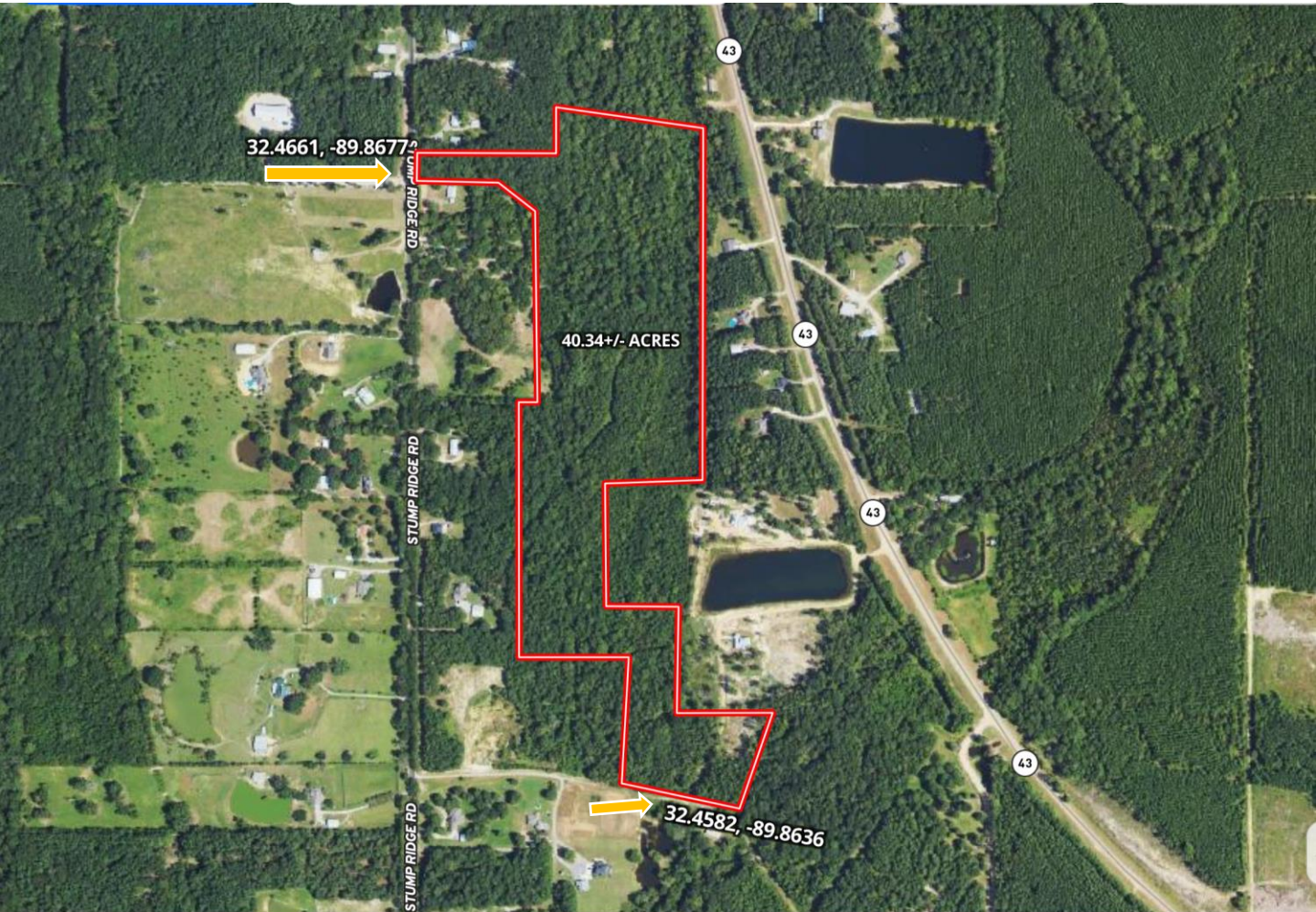
A Real Estate Expert You Can Trust

TomSmithLandandHomes.com

Information is believed to be accurate but not guaranteed.



Aerial Map



Click [Here](#) for a LandId Interactive Map Link



**WALKER
TRANUM**
REALTOR®

Office: 662.268.6333
Cell: 662.769.1442

Walker@TomSmithHomes.com



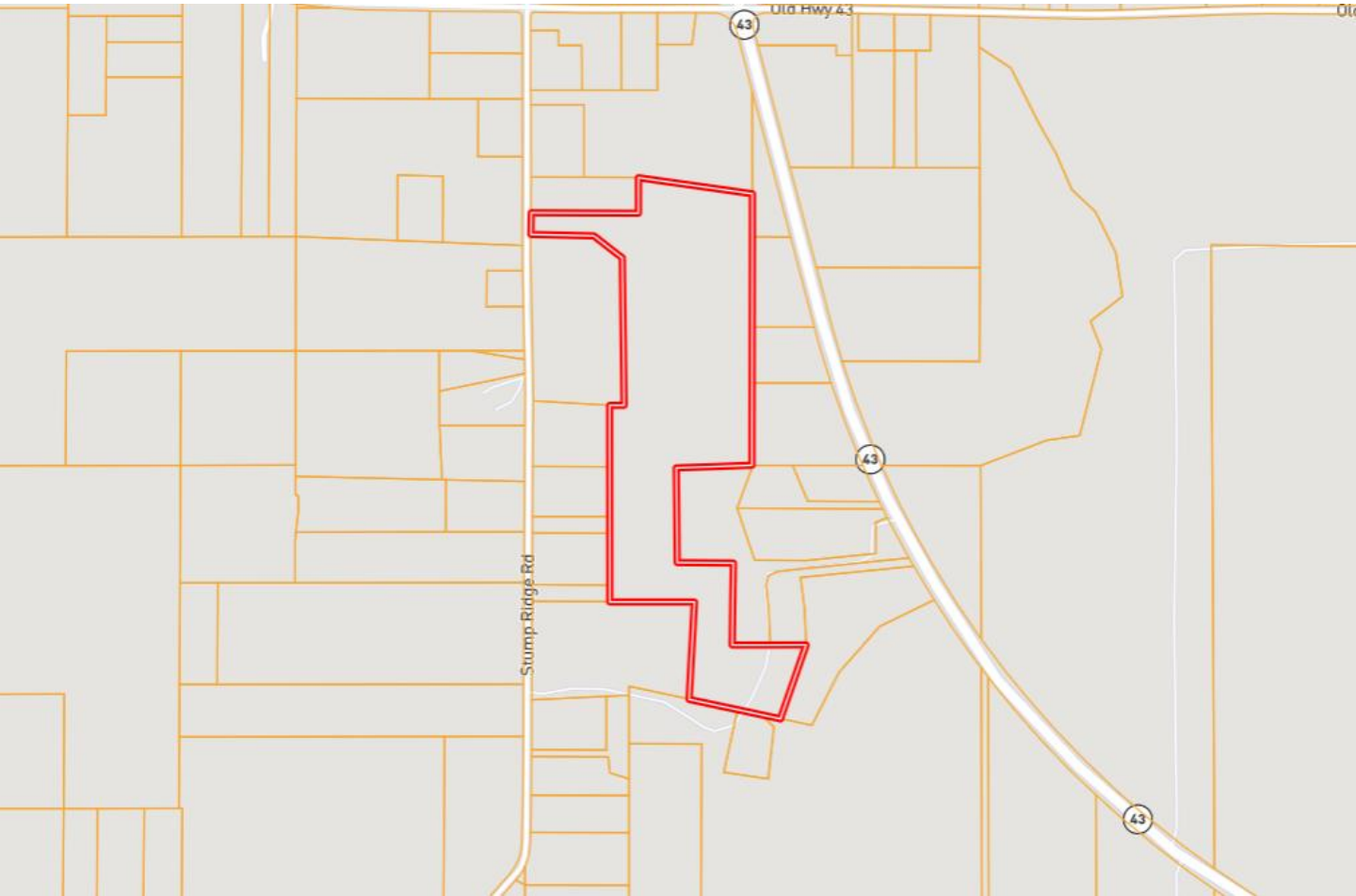
A Real Estate Expert You Can Trust

TomSmithLandandHomes.com

Information is believed to be accurate but not guaranteed.

2011-2023
**BEST
BROKERAGES**

Ownership Map



**WALKER
TRANUM**
REALTOR®

Office: 662.268.6333
Cell: 662.769.1442

Walker@TomSmithHomes.com



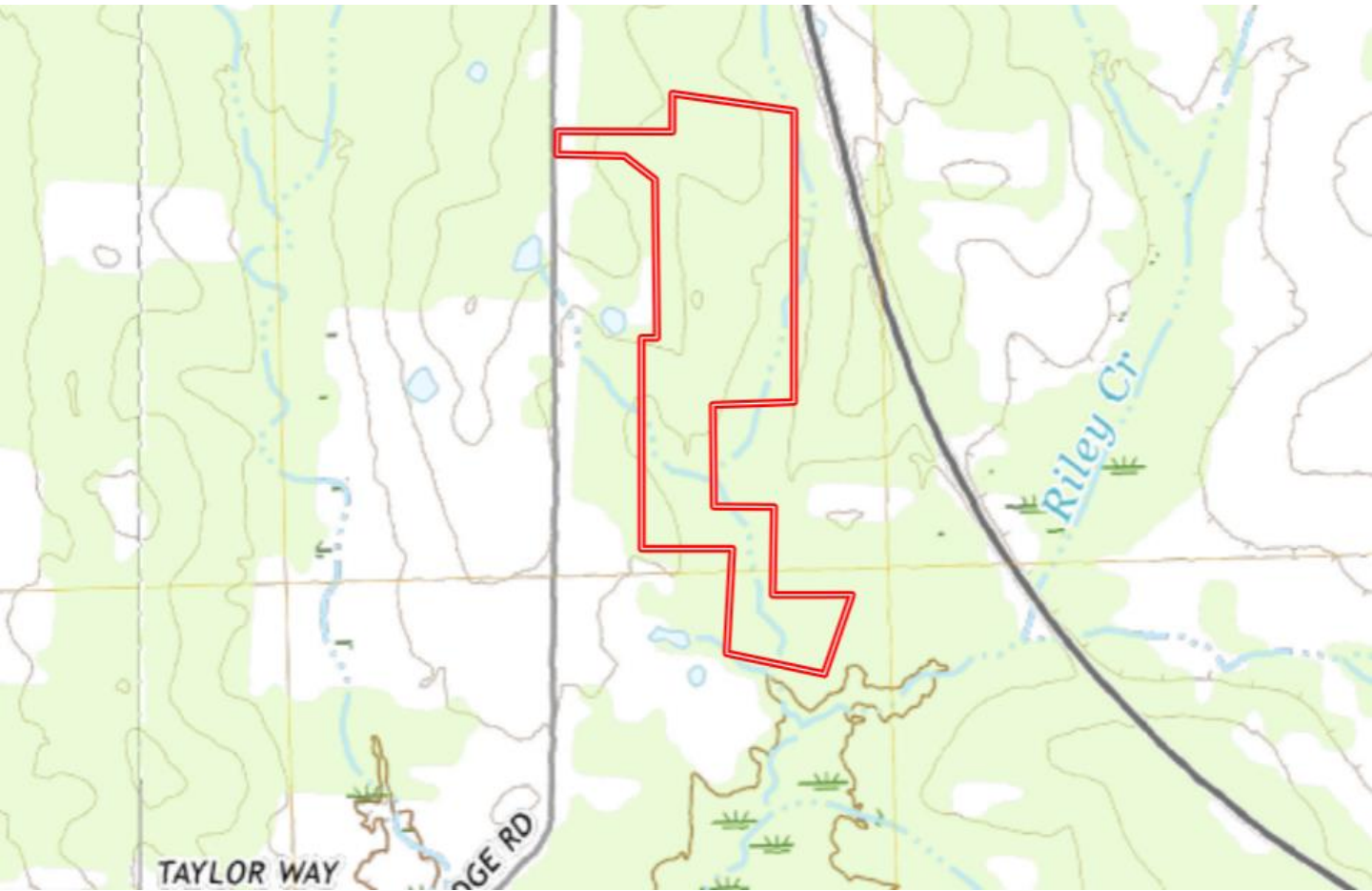
A Real Estate Expert You Can Trust

TomSmithLandandHomes.com

Information is believed to be accurate but not guaranteed.



Topography Map



**WALKER
TRANUM**
REALTOR®

Office: 662.268.6333
Cell: 662.769.1442

Walker@TomSmithHomes.com



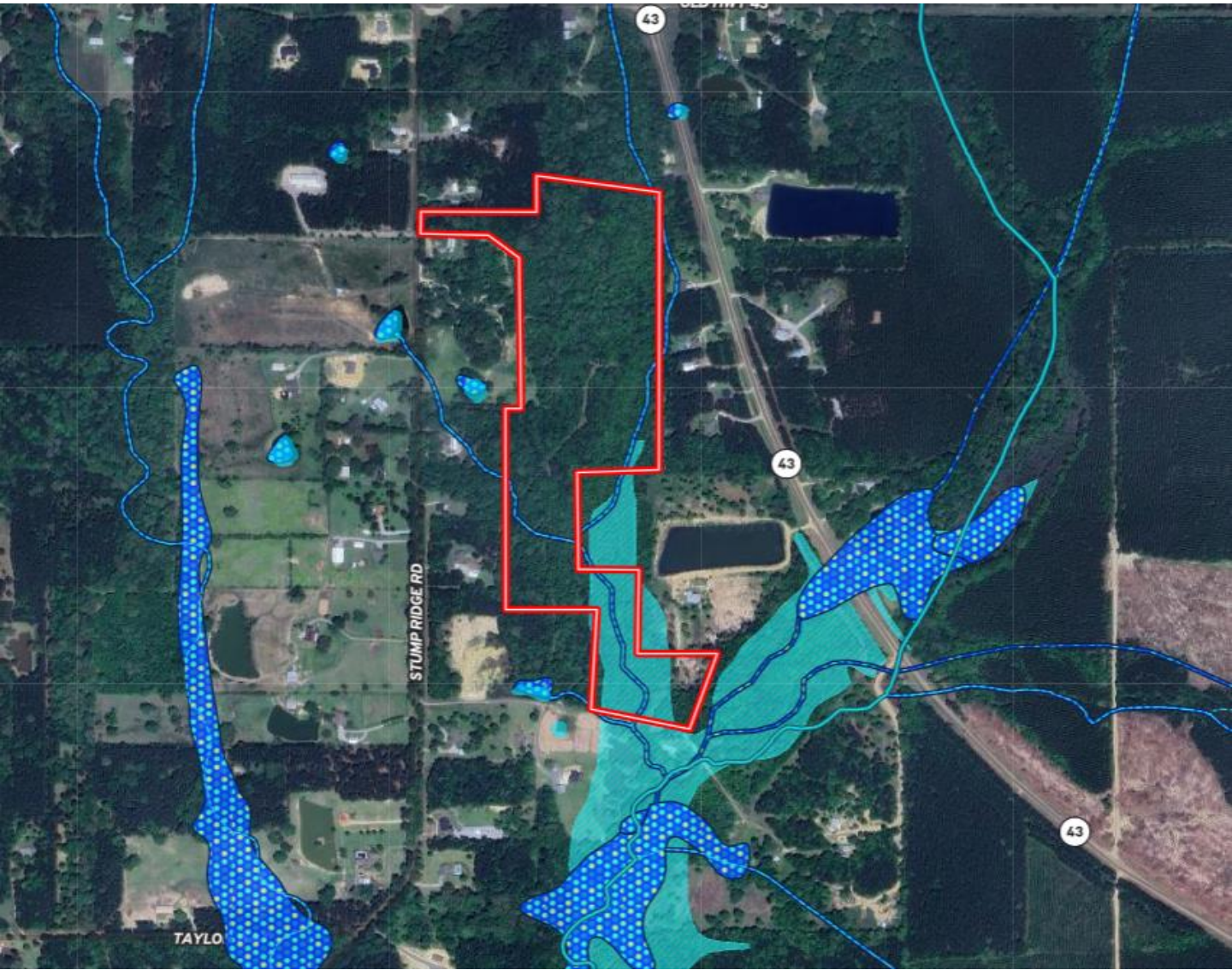
A Real Estate Expert You Can Trust

TomSmithLandandHomes.com

Information is believed to be accurate but not guaranteed.

2011-2023
BEST
BROKERAGES

Flood Map



**WALKER
TRANUM**
REALTOR®

Office: 662.268.6333
Cell: 662.769.1442

Walker@TomSmithHomes.com



A Real Estate Expert You Can Trust

TomSmithLandandHomes.com

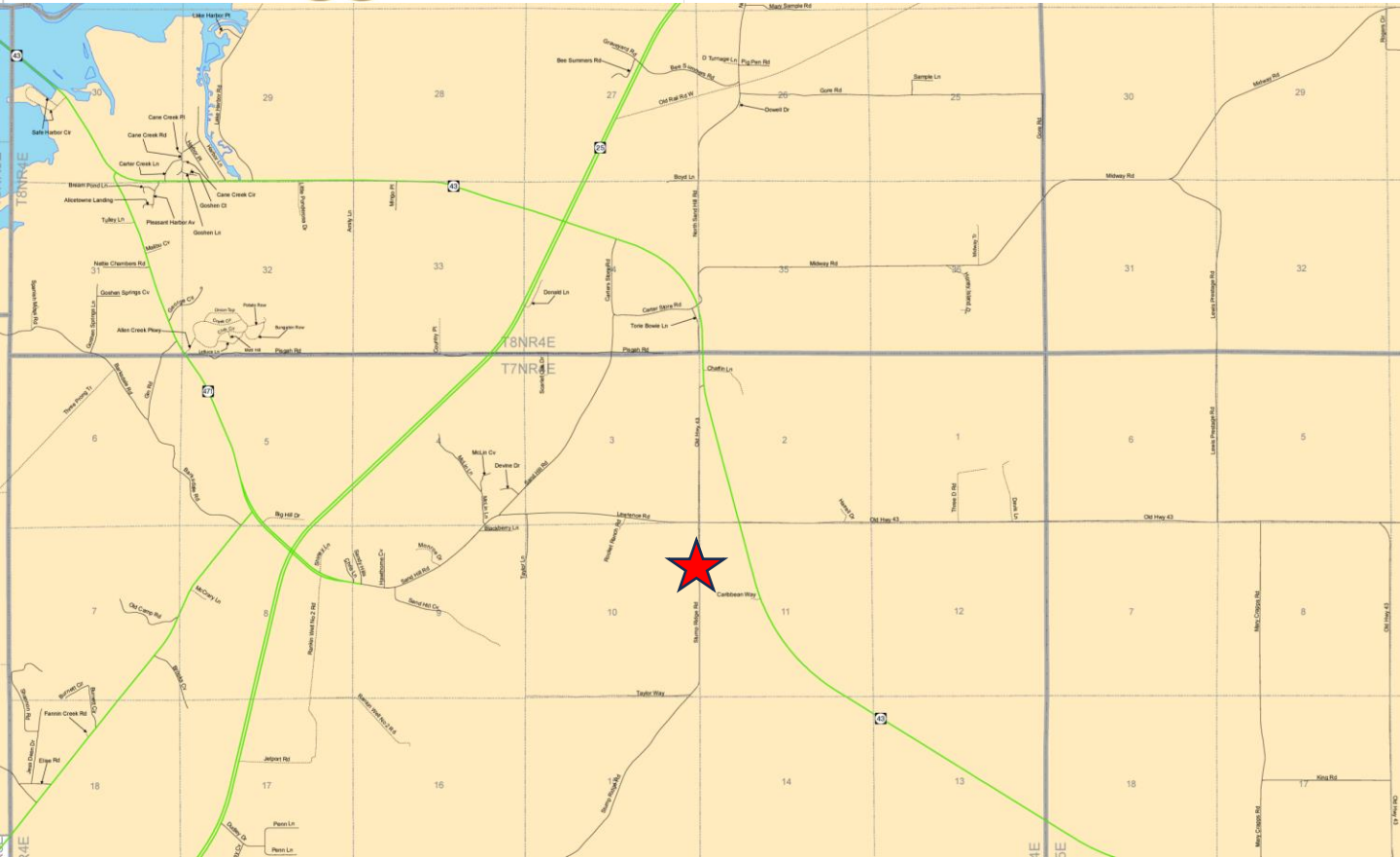
Information is believed to be accurate but not guaranteed.



Pisgah School District

Rankin County

MISSISSIPPI



WALKER
TRANUM
REALTOR®

Office: 662.268.6333
Cell: 662.769.1442

Walker@TomSmithHomes.com



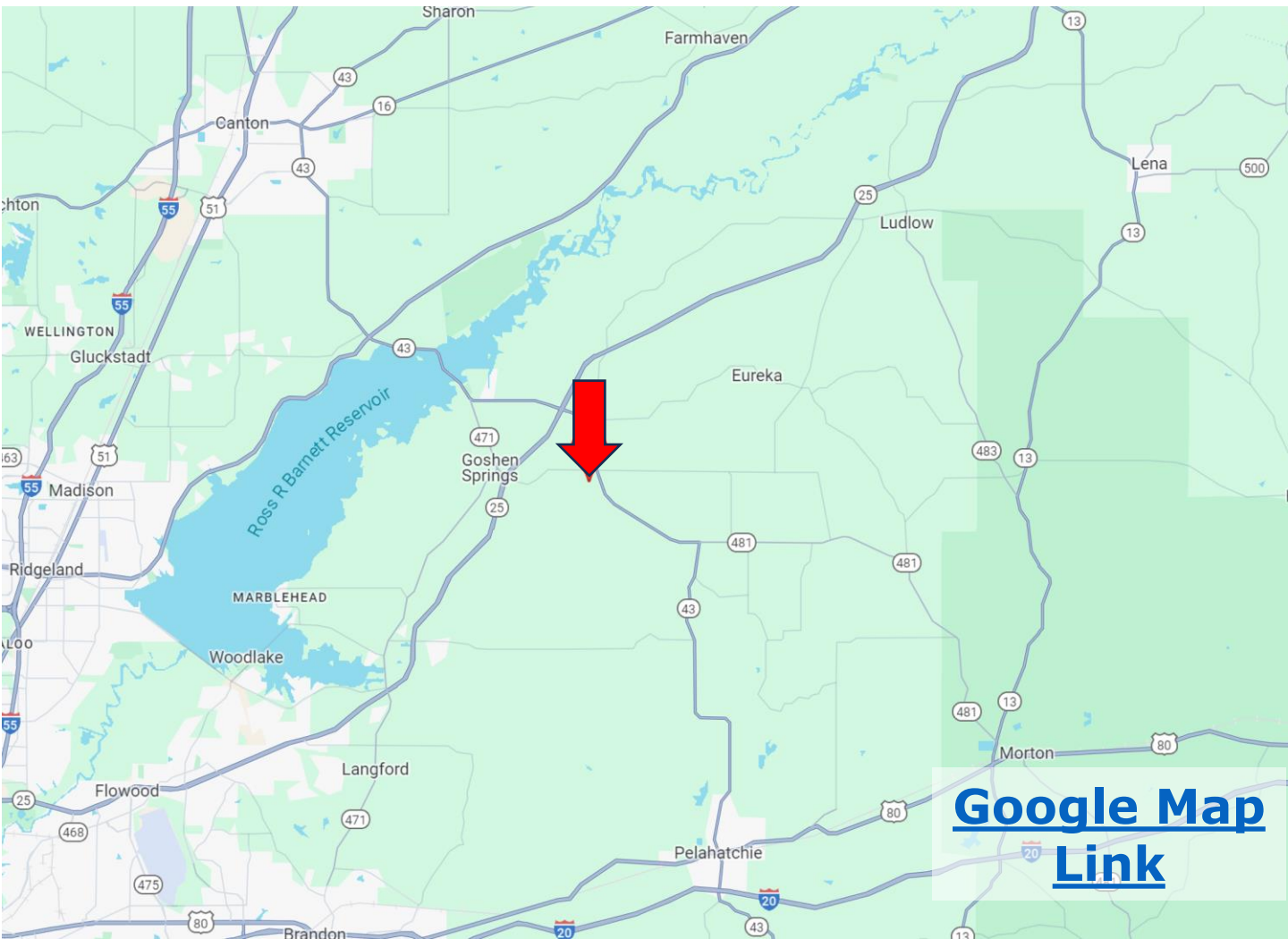
A Real Estate Expert You Can Trust

TomSmithLandandHomes.com

Information is believed to be accurate but not guaranteed.



Directional Map



Directions from Hwy 25 and Sandhill Road: Take the exit for Hwy 471/Goshen Springs and turn right onto Sandhill Road. Travel 1.3 miles, then turn right onto Lawrence Road. Travel 1.2 miles, then turn right onto Stump Ridge Road. After .2 miles, the property will be on your right.



**WALKER
TRANUM**
REALTOR®

Office: 662.268.6333

Cell: 662.769.1442

Walker@TomSmithHomes.com



A Real Estate Expert You Can Trust

TomSmithLandandHomes.com

Information is believed to be accurate but not guaranteed.

