

2.42± ACRE BOLIVAR COUNTY INVESTMENT PROPERTY  
2492 Hwy 446 Boyle, MS 38730



**\$150,000**

Investment Investment Investment! This 2.42± acre Bolivar County property is located at 2492 Hwy 446 Boyle, MS. It consists of seven mobile homes that bring in over \$1,500 monthly. The property offers a brand-new crushed asphalt pad with over five different RV hookups where you can stay nightly or monthly. This is a great investment property, just outside of town, and brings in a steady cash flow of income. Located just minutes from town, it offers a place to take your friends and family for a night out to eat, go bowling, and more. Call Anthony Steen today!



**ANTHONY  
STEEN**  
REALTOR®

Office: 662.441.2500  
Cell: 662.645.5151

Anthony@TomSmithLand.com



Expect More. Get More.

**A Real Estate Expert You Can Trust**

TomSmithLandandHomes.com

Information is believed to be accurate but not guaranteed.





## ANTHONY STEEN

REALTOR®

Office: 662.441.2500

Cell: 662.645.5151

Anthony@TomSmithLand.com



A Real Estate Expert You Can Trust

TomSmithLandandHomes.com

Information is believed to be accurate but not guaranteed.

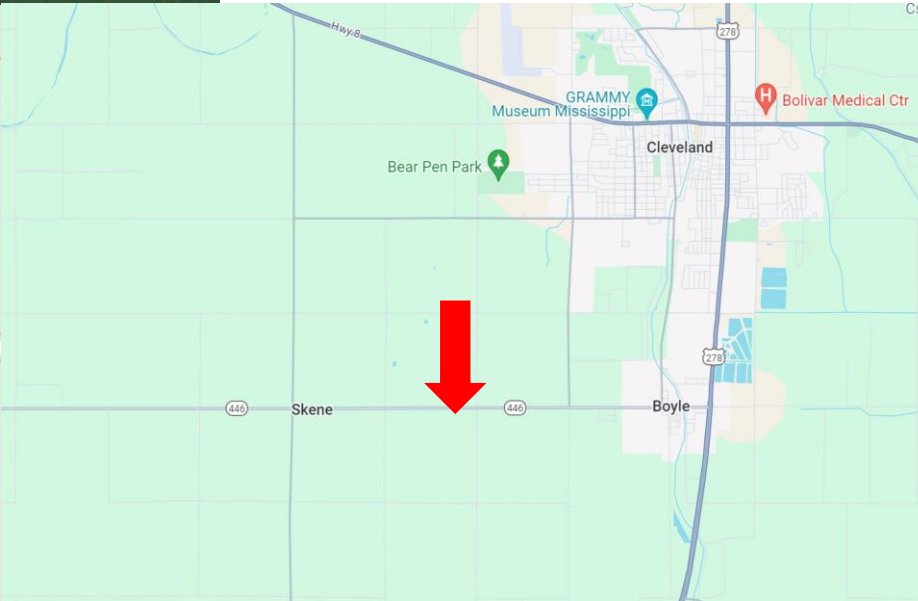
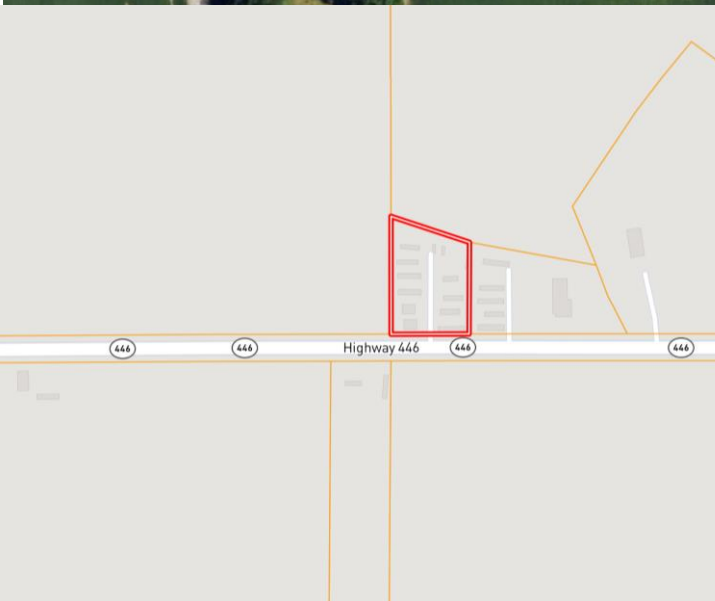


# MAPS

## Click for Interactive Map



**Address:** 2492 Hwy 446  
Boyle, MS, 38730  
**Directions from Hwy 8 and Hwy 61 in Cleveland, MS:** Travel south on Hwy 61/Hwy 278 for 3 miles. Turn right onto Hwy 446. Travel 2.7 miles, the property will be on the right.  
[Click for Google Maps](#)



**ANTHONY  
STEEN**  
REALTOR®

Office: 662.441.2500  
Cell: 662.645.5151  
Anthony@TomSmithLand.com



**A Real Estate Expert You Can Trust**  
TomSmithLandandHomes.com

Information is believed to be accurate but not guaranteed.

