

Washington County Fixer-Upper



511 N Church Street Hollandale, MS 38748

\$91,500

Welcome to this spacious 3-bedroom, 2-bathroom, 2-story home located on a shaded corner lot in Washington County, MS. With 2,517 square feet of living space, the main bedroom is conveniently downstairs along with a bonus room, while the other bedrooms are upstairs. This fixer-upper awaits your touch and TLC to turn it into the cozy home you've always dreamed of. Take the chance to make this property yours! Call Bruce for your tour today!



**BRUCE
WEST**
REALTOR®

Office: 662.441.2500

Cell: 662.873.3007

Bruce@TomSmithLand.com



A Real Estate Expert You Can Trust

TomSmithLandandHomes.com

Information is believed to be accurate but not guaranteed.





BRUCE WEST
REALTOR®
Office: 662.441.2500
Cell: 662.873.3007
Bruce@TomSmithLand.com



A Real Estate Expert You Can Trust
TomSmithLandandHomes.com

Information is believed to be accurate but not guaranteed.





BRUCE WEST

REALTOR®

Office: 662.441.2500

Cell: 662.873.3007

Bruce@TomSmithLand.com



A Real Estate Expert You Can Trust

TomSmithLandandHomes.com

Information is believed to be accurate but not guaranteed.





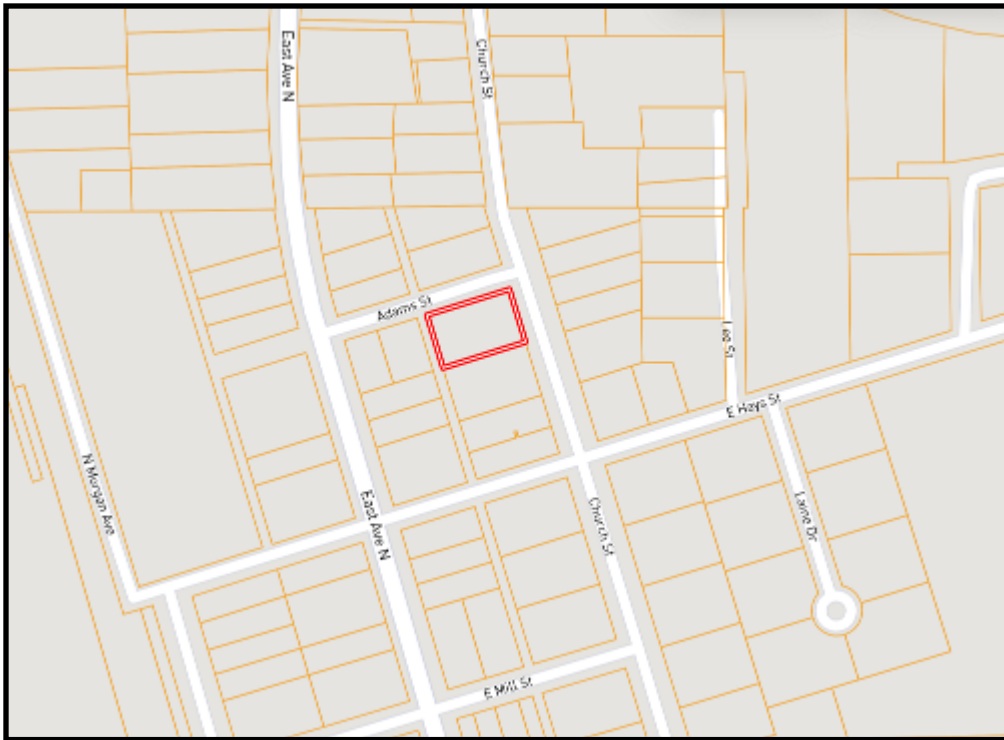
BRUCE WEST
REALTOR®
Office: 662.441.2500
Cell: 662.873.3007
Bruce@TomSmithLand.com



A Real Estate Expert You Can Trust
TomSmithLandandHomes.com

Information is believed to be accurate but not guaranteed.





Ownership Map



Aerial Map

[Click Here for an
Interactive Map](#)

BRUCE WEST

REALTOR®

Office: 662.441.2500

Cell: 662.873.3007

Bruce@TomSmithLand.com



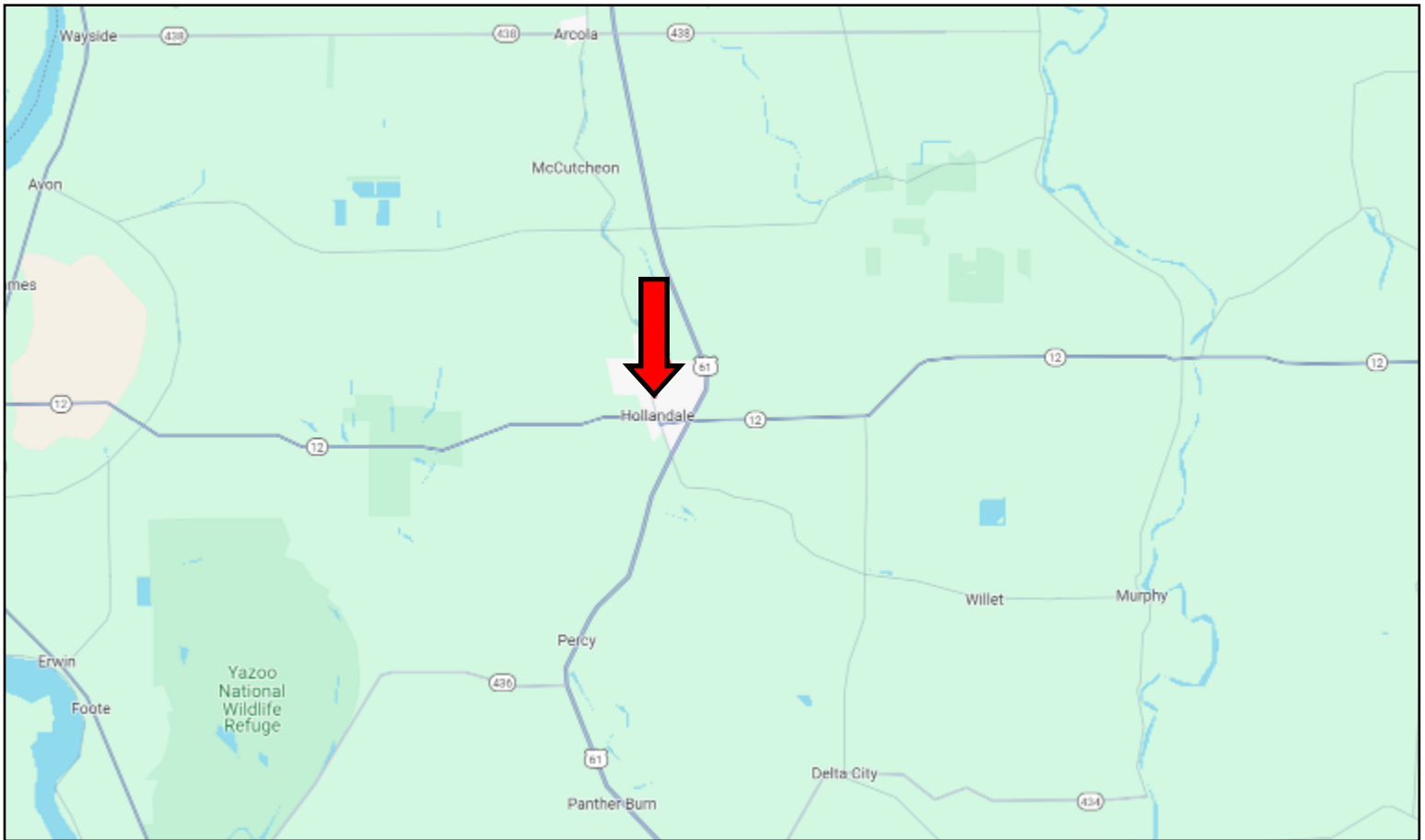
A Real Estate Expert You Can Trust

TomSmithLandandHomes.com

Information is believed to be accurate but not guaranteed.



Directional Map



Directions from Hwy 12 and Hwy 61 in Hollandale, MS: Travel Hwy 12 for .9 miles. Turn right onto East Avenue and travel .5 miles. Turn right onto E Hays Street, then turn left at the first cross street onto Church Street. After 312 feet, the home will be on your left.

511 N Church Street Hollandale, MS 38748—Google Map Link



**BRUCE
WEST**

REALTOR®

Office: 662.441.2500

Cell: 662.873.3007

Bruce@TomSmithLand.com



A Real Estate Expert You Can Trust

TomSmithLandandHomes.com

Information is believed to be accurate but not guaranteed.

