

# COZY HOME ON A CORNER LOT IN BOLIVAR COUNTY

637 N BAYOU CLEVELAND, MS 38732



This 1,584 sq ft home sits on a shaded corner lot, boasting 3 bedrooms and 2 baths. Its open floor plan seamlessly integrates the kitchen and dining area, perfect for everyday living or entertaining guests. Whether you're looking for a primary residence or a lucrative rental property, this home fits the bill. With ample space provided by the 3 bedrooms, it accommodates families with ease. Outside, the .75± acre shaded corner lot offers ample space for outdoor activities and moments of relaxation. Call Bruce for your private

Directions from the intersection of Hwy 8 and Hwy 61 in Cleveland, MS: Travel west on Hwy 8/E Sunflower Road for 0.5 miles. Turn right onto N Bayou Ave. After 0.9 miles, the house will be on the left. [Google Map Link](#)



**BRUCE  
WEST**  
REALTOR®

Office: 662.441.2500  
Cell: 662.873.3007  
Bruce@TomSmithLand.com



**A Real Estate Expert You Can Trust**

TomSmithLandandHomes.com

Information is believed to be accurate but not guaranteed.





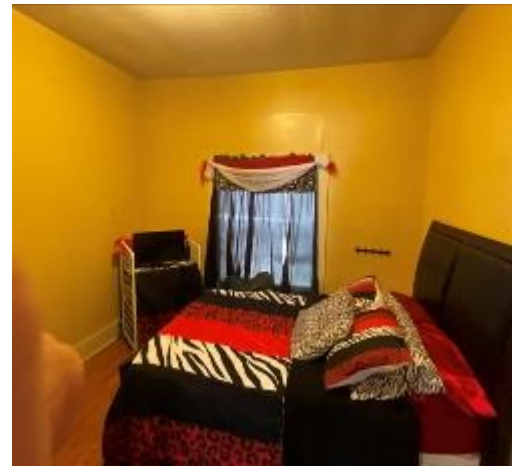
**BRUCE WEST**  
 REALTOR®  
 Office: 662.441.2500  
 Cell: 662.873.3007  
 Bruce@TomSmithLand.com



**A Real Estate Expert You Can Trust**  
 TomSmithLandandHomes.com

Information is believed to be accurate but not guaranteed.





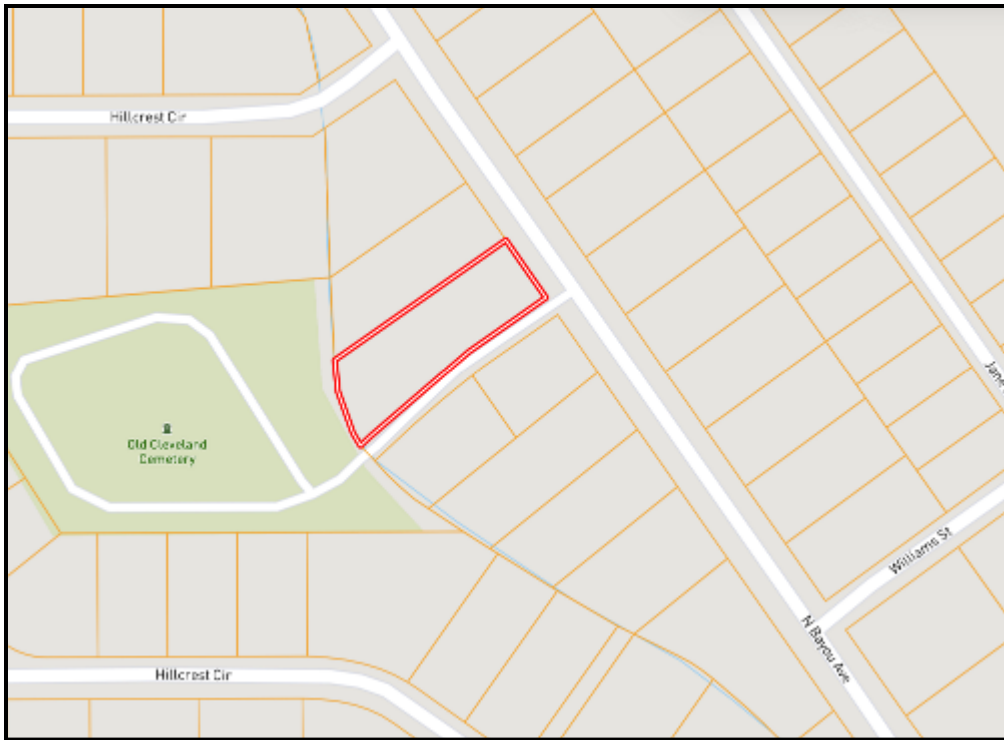
**BRUCE WEST**  
 REALTOR®  
 Office: 662.441.2500  
 Cell: 662.873.3007  
 Bruce@TomSmithLand.com



**A Real Estate Expert You Can Trust**  
 TomSmithLandandHomes.com

Information is believed to be accurate but not guaranteed.





# OWNERSHIP MAP



# AERIAL MAP

[Click Here for an  
Interactive Map](#)

**BRUCE WEST**  
REALTOR®  
Office: 662.441.2500  
Cell: 662.873.3007  
Bruce@TomSmithLand.com

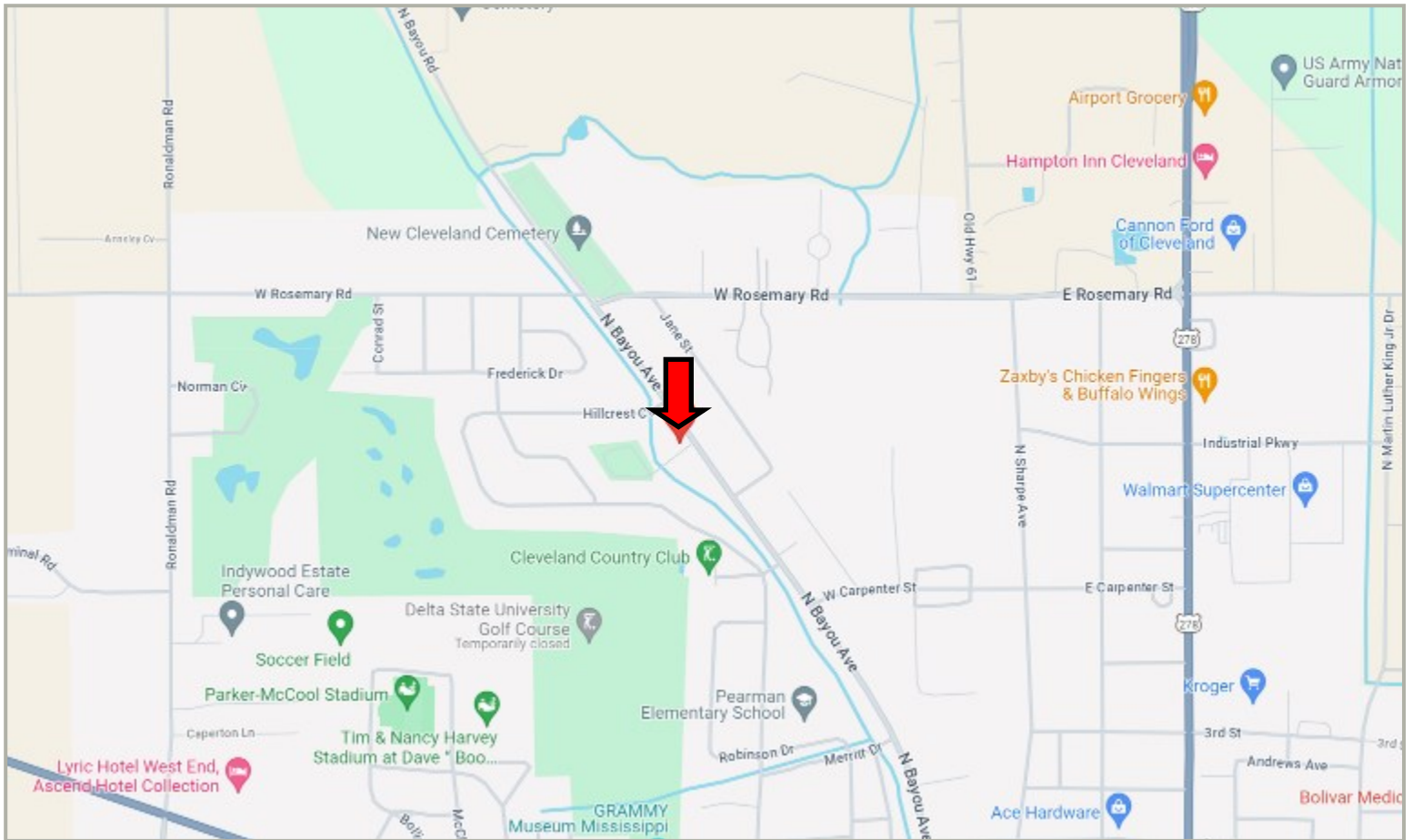


**A Real Estate Expert You Can Trust**  
TomSmithLandandHomes.com

Information is believed to be accurate but not guaranteed.



# DIRECTIONAL MAP



Directions from the intersection of Hwy 8 and Hwy 61 in Cleveland, MS: Travel west on Hwy 8/E Sunflower Road for 0.5 miles. Turn right onto N Bayou Ave. After .9 miles, the house will be on the left. [Google Map Link](#)



**BRUCE  
WEST**  
REALTOR®

Office: 662.441.2500  
Cell: 662.873.3007  
Bruce@TomSmithLand.com



**A Real Estate Expert You Can Trust**

TomSmithLandandHomes.com

Information is believed to be accurate but not guaranteed.

