

318 S. Victoria Avenue
Cleveland, MS
Charming Cleveland
Cottage
\$129,500



Oh, so cute—look at this charming cottage! This home is 1,102± SF and has two bedrooms and one bathroom. It has original, gorgeous hardwood floors that have recently been refinished. The bathroom and kitchen have both been updated. The home has a welcoming entry porch and a fenced backyard with a detached carport. It is located just one block from Fireman's Park and is central to all of Cleveland in Bolivar County.

TRACEY
BELL

MANAGING BROKER

Office: 662.441.2500

Cell: 662.719.4720

Tracey@TomSmithLand.com



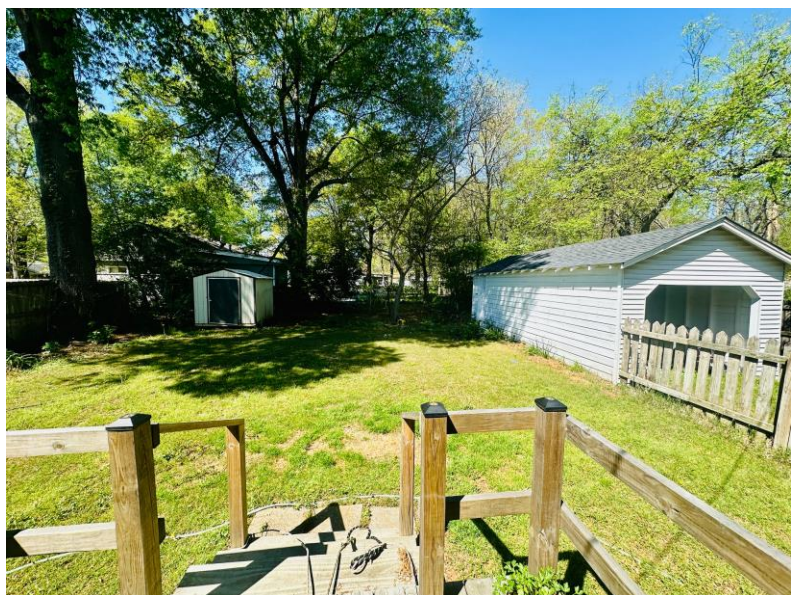
Expect More. Get More.

A Real Estate Expert You Can Trust

TomSmithLandandHomes.com

Information is believed to be accurate but not guaranteed.





**TRACEY
BELL**
MANAGING BROKER
Office: 662.441.2500
Cell: 662.719.4720
Tracey@TomSmithLand.com



A Real Estate Expert You Can Trust
TomSmithLandandHomes.com

Information is believed to be accurate but not guaranteed.





- 2 Bedrooms
- 1 Bathroom
- 1,102± SF
- Fenced Backyard
- Detached Carport
- Updated Kitchen & Bathroom
- Hardwood Floors
- Ample Natural Light
- Built in 1925

**TRACEY
BELL**

MANAGING BROKER

Office: 662.441.2500

Cell: 662.719.4720

Tracey@TomSmithLand.com

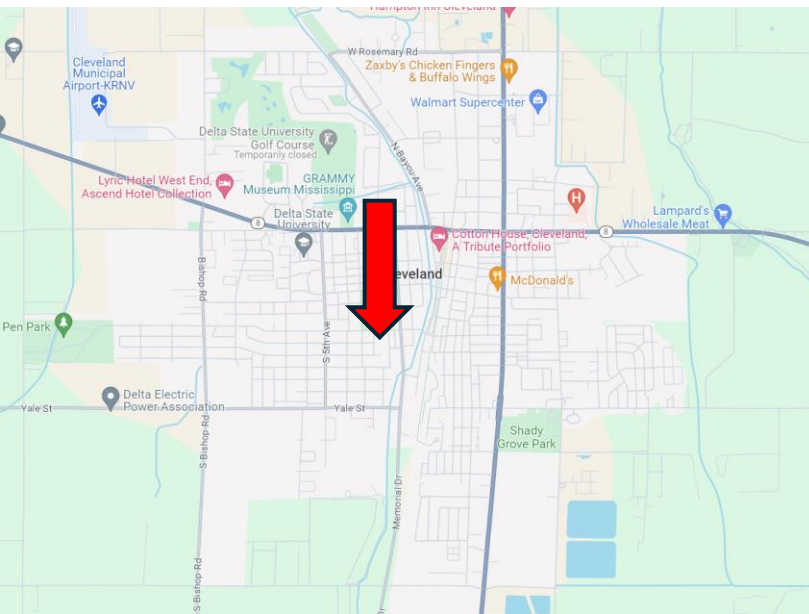
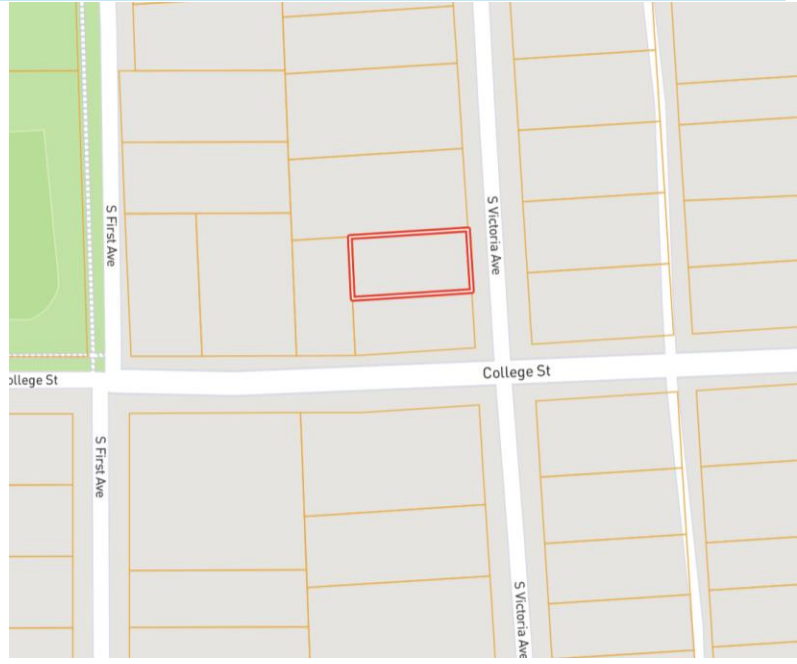


A Real Estate Expert You Can Trust
TomSmithLandandHomes.com

Information is believed to be accurate but not guaranteed.



MAPS | [Click for Interactive Map](#)



Address: 318 S. Victoria Avenue
Cleveland, MS 38732

Directions from Hwy 8 & Hwy 61 in Cleveland, MS: Travel west on Hwy 8 for 0.7 miles. Turn left onto Victoria Avenue. After 0.6 miles, the home will be on the right. [Click for Google Maps.](#)



TRACEY BELL
MANAGING BROKER
Office: 662.441.2500
Cell: 662.719.4720
Tracey@TomSmithLand.com



Expect More. Get More.

A Real Estate Expert You Can Trust

TomSmithLandandHomes.com

Information is believed to be accurate but not guaranteed.

