



SMALLTOWN
HUNTING PROPERTIES
& REAL ESTATESM
Office 769.888.2522

78 Acres in Madison County, MS
\$819,000

Property Profile

The Madison 78

Location:

- Canton, MS
- Madison County
- 6± Miles Northeast of Madison

Coordinates:

- 32.57356, -90.04215

Property Information:

- 78± Acres
- Close Proximity to the Nissan Plant
- Road Frontage Along N Old Canton Road
- Power Provided by Entergy Mississippi, Inc.
- City of Canton Water Available
- Residential Estate Zoning

Property Use:

- Development
- Residential Estate
- Recreational
- Investment

Tax Information: 2023- \$422.22

- Parcel 1#: 082A-01-018/00.00
- Parcel 2#: 082A-01-019/00.00
- Parcel 3#: 082A-01-020/00.00



SMALLTOWN
HUNTING PROPERTIES
& REAL ESTATESM

MICHAEL OSWALT, ALC

PRINCIPAL BROKER


C: 662-719-3967

O: 769-888-2522

michael@smalltownproperties.com

4848 Main St. - Flora, MS 39071

smalltownproperties.com

/21,000+ Followers

Information is believed to be accurate but not guaranteed.


Welcome to the Madison 78 located less than a mile from the Nissan Plant in Canton, MS. This Madison County property features paved frontage along the east side of Old Canton Road and gently rolling topography. Historically, the property was utilized as a dirt pit but has since been reclaimed and is ready for the next owner. The potential uses are endless – development, residential estate, recreational, investment. Utilities include power provided by Entergy Mississippi, Inc and water by the City of Canton. The location is perfect being along the southern boundary of the Canton City Limits, 2.5± miles northeast of Gluckstadt, and 6± miles northeast of Madison. If you have been searching for a conveniently located Madison County property with endless opportunities, give Michael Oswalt a call for your private tour today.



SMALLTOWN
HUNTING PROPERTIES
& REAL ESTATESM



MICHAEL OSWALT, ALC
PRINCIPAL BROKER
C: 662-719-3967
O: 769-888-2522
michael@smalltownproperties.com
4848 Main St. - Flora, MS 39071
smalltownproperties.com

 /21,000+ Followers

Information is believed to be accurate but not guaranteed.



SMALLTOWN

HUNTING PROPERTIES
& REAL ESTATESM

MICHAEL OSWALT, ALC

PRINCIPAL BROKER

C: 662-719-3967

O: 769-888-2522

michael@smalltownproperties.com

4848 Main St. - Flora, MS 39071

smalltownproperties.com

/21,000+ Followers

Information is believed to be accurate but not guaranteed.



SMALLTOWN
HUNTING PROPERTIES
& REAL ESTATESM



MICHAEL OSWALT, ALC

PRINCIPAL BROKER


C: 662-719-3967

O: 769-888-2522

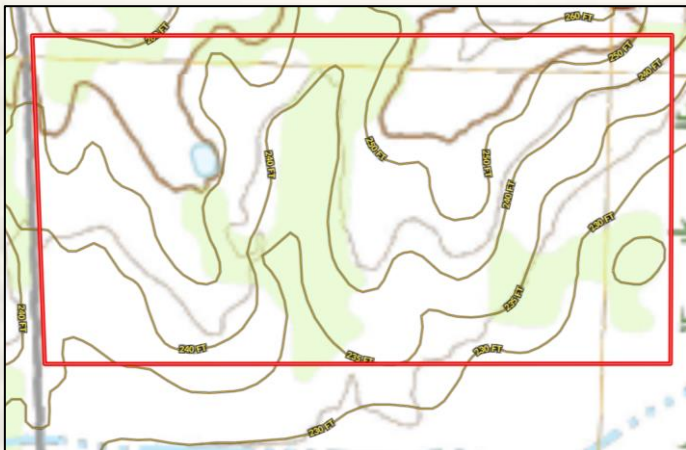
michael@smalltownproperties.com

4848 Main St. - Flora, MS 39071

smalltownproperties.com

 /21,000+ Followers

Information is believed to be accurate but not guaranteed.



Topo Map



Flood Map



[Land id Link](#)

Aerial Map



SMALLTOWN
HUNTING PROPERTIES
& REAL ESTATESM

MICHAEL OSWALT, ALC

PRINCIPAL BROKER

C: 662-719-3967

O: 769-888-2522

michael@smalltownproperties.com

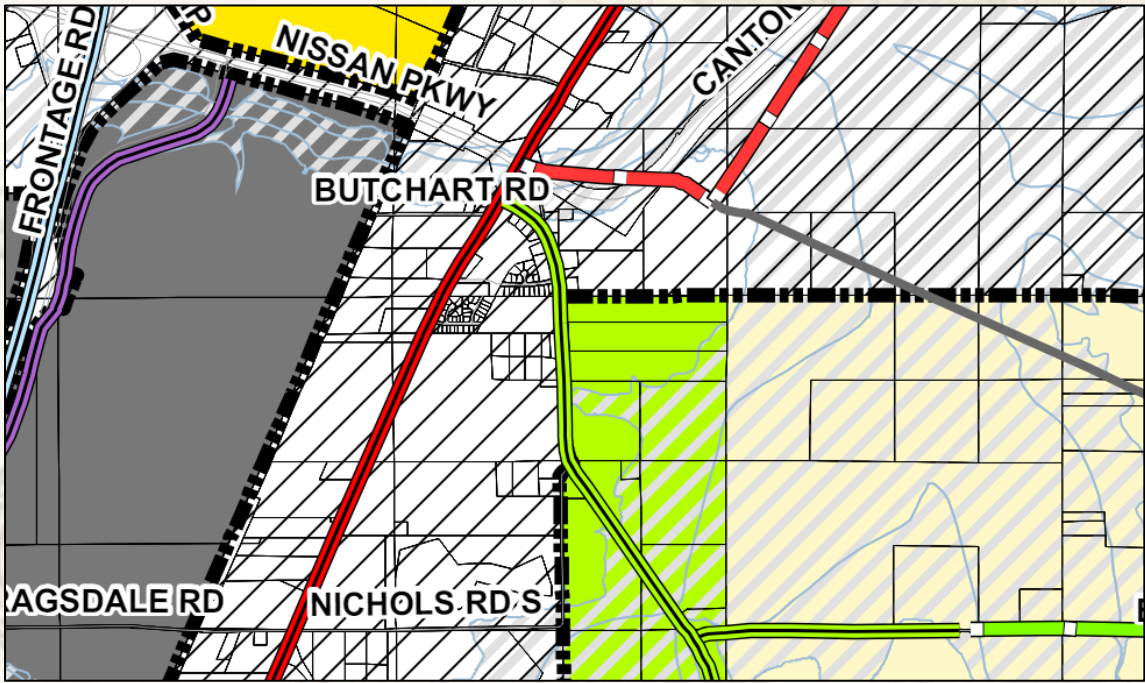
4848 Main St. - Flora, MS 39071

smalltownproperties.com

/21,000+ Followers

Information is believed to be accurate but not guaranteed.

Zoning Map



Legend

	Agricultural		Municipal Limits
	Residential Estate		100-Year Floodplain
	Low-Density Residential		Proposed Collector
	Moderate-Density Residential		Collector
	High-Density Residential		Proposed Minor Arterial
	Manufactured Homes		Minor Arterial
	General Commercial		Proposed Hwy 43
	Low Intensity Commercial		Proposed Principal Arterial
	High Intensity Commercial		Principal Arterial
	Light Industrial		Interstate 55
	Heavy Industrial		
	Parks/Open Space		
	Public/Quasi Public		



SMALLTOWN
HUNTING PROPERTIES
& REAL ESTATESM

MICHAEL OSWALT, ALC

PRINCIPAL BROKER


C: 662-719-3967

O: 769-888-2522

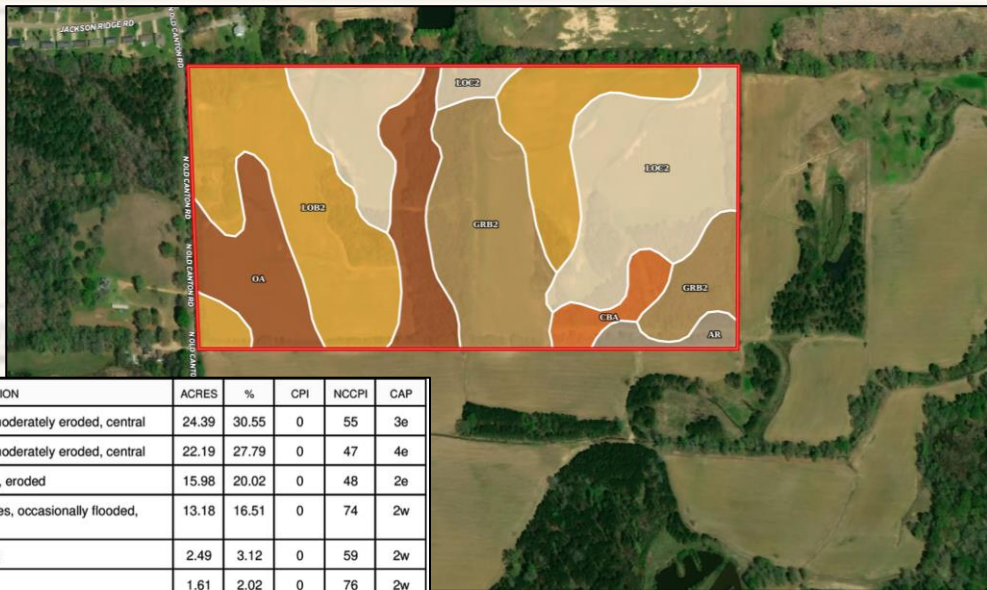
michael@smalltownproperties.com

4848 Main St. - Flora, MS 39071

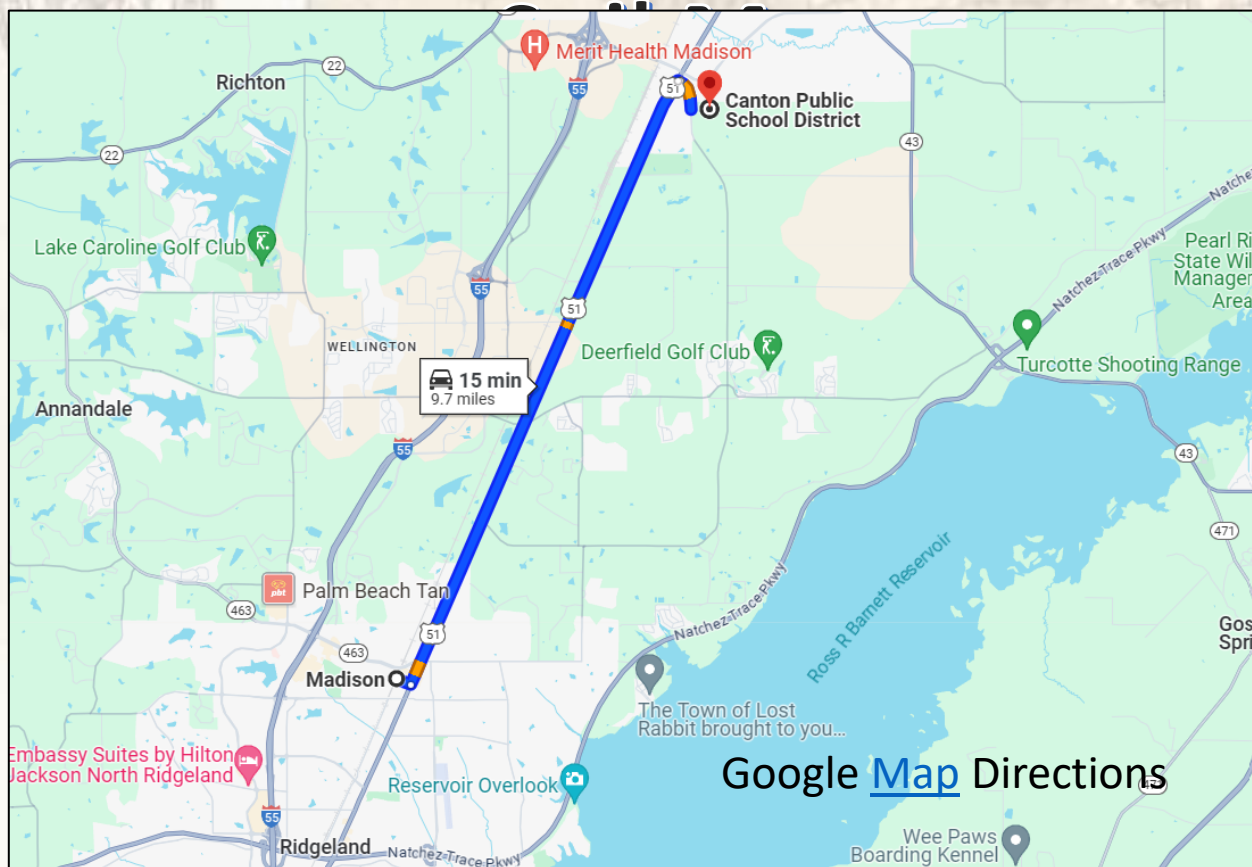
smalltownproperties.com

 /21,000+ Followers

Information is believed to be accurate but not guaranteed.



SOIL CODE	SOIL DESCRIPTION	ACRES	%	CPI	NCCPI	CAP
LoB2	Loring silt loam, 2 to 5 percent slopes, moderately eroded, central	24.39	30.55	0	55	3e
LoC2	Loring silt loam, 5 to 8 percent slopes, moderately eroded, central	22.19	27.79	0	47	4e
GrB2	Grenada silt loam, 2 to 5 percent slopes, eroded	15.98	20.02	0	48	2e
Oa	Oaklimer silt loam, 0 to 2 percent slopes, occasionally flooded, north	13.18	16.51	0	74	2w
CbA	Calloway silt loam, 0 to 1 percent slopes	2.49	3.12	0	59	2w
Ar	Ariel silt loam	1.61	2.02	0	76	2w
TOTALS		79.84	100%	-	55.06	2.86



ST SMALLTOWN

HUNTING PROPERTIES & REAL ESTATESM

MICHAEL OSWALT, ALC
 PRINCIPAL BROKER
 C: 662-719-3967
 O: 769-888-2522
 michael@smalltownproperties.com
 4848 Main St. - Flora, MS 39071
 smalltownproperties.com

f/21,000+ Followers

Information is believed to be accurate but not guaranteed.