

Country Living in Lauderdale County, MS

3 BR 2 BA 2,700+/- S.F. Home
384 Ponta Hills Road
Meridian, MS



Welcome to your new home in a charming neighborhood in Lauderdale County, MS. This three-bedroom, two-bath brick house sits on a spacious 2.30± acre lot, featuring a fenced backyard with a small workshop, an attached two-car garage, and an office. Enjoy the open floor plan with high ceilings in the living room, a spacious kitchen, and a large family room with a beautiful stone fireplace as the centerpiece for your entertainment. The sizeable primary suite features a bathroom with a jetted tub as well as walk-in closets. Enjoy the large deck overlooking the wooded property while enjoying your beverage of choice and watching the sunset! A wooded landscape surrounds the property and provides plenty of outdoor space. Conveniently located near all Meridian has to offer. The home is being sold as is. Call Tom to schedule your private tour today!



TOM SMITH
ALC®, BROKER
Office: 601.898.2772
Cell: 601.454.9397
Tom@TomSmithLand.com

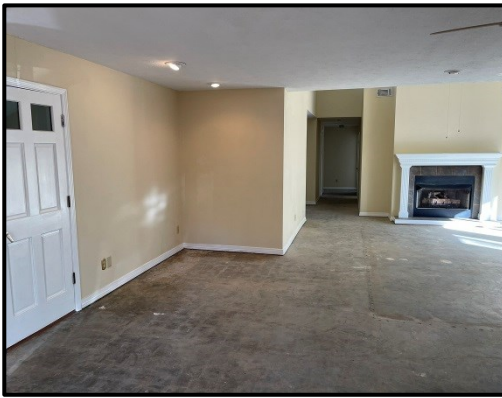
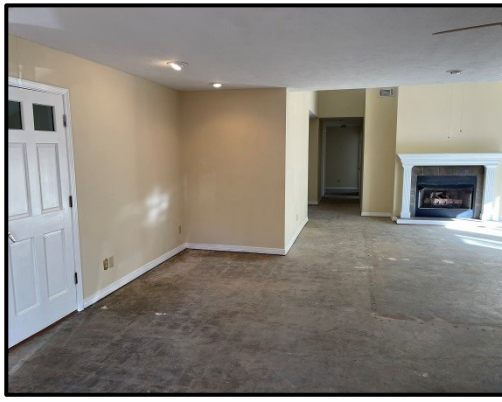


Call The Land Man Today!

TomSmithLandandHomes.com



Information is believed to be accurate but not guaranteed.



TOM SMITH

ALC®, BROKER

Office: 601.898.2772

Cell: 601.454.9397

Tom@TomSmithLand.com



Call The Land Man Today!

TomSmithLandandHomes.com

Information is believed to be accurate but not guaranteed.





TOM SMITH

ALC®, BROKER

Office: 601.898.2772

Cell: 601.454.9397

Tom@TomSmithLand.com



Call The Land Man Today!

TomSmithLandandHomes.com

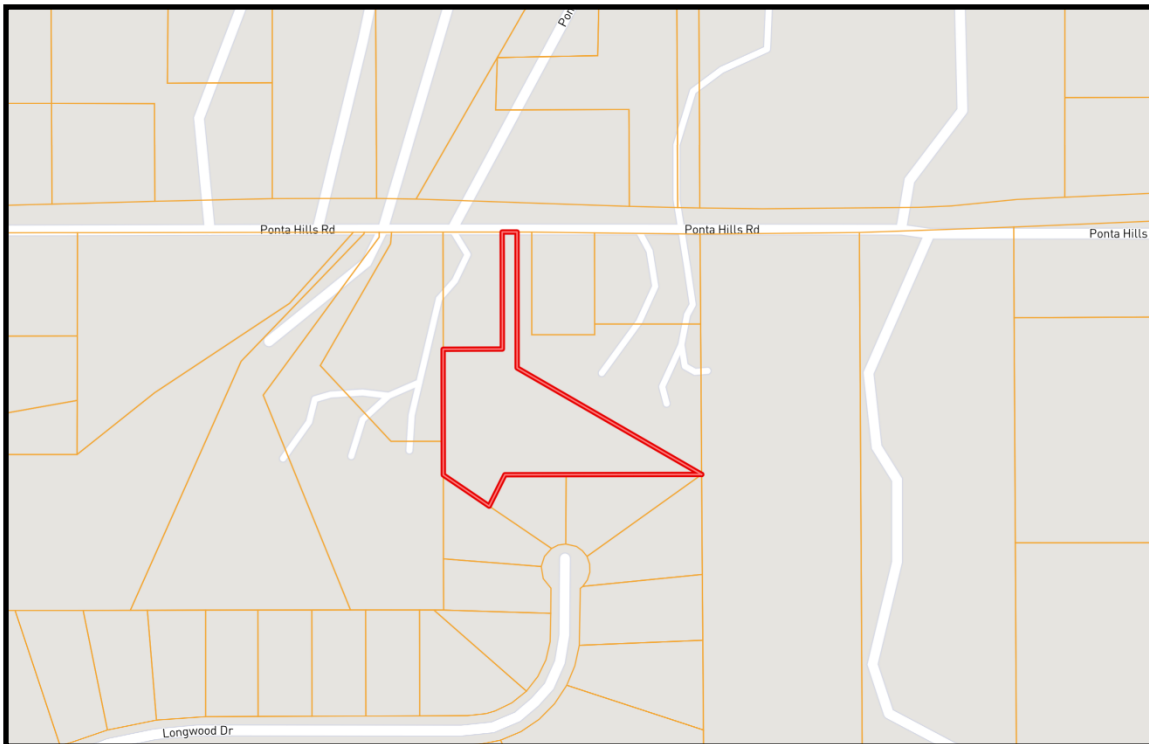
Information is believed to be accurate but not guaranteed.





AERIAL MAP

[LandId Interactive Map Link](#)



OWNERSHIP MAP

TOM SMITH
ALC®, BROKER
Office: 601.898.2772
Cell: 601.454.9397
Tom@TomSmithLand.com

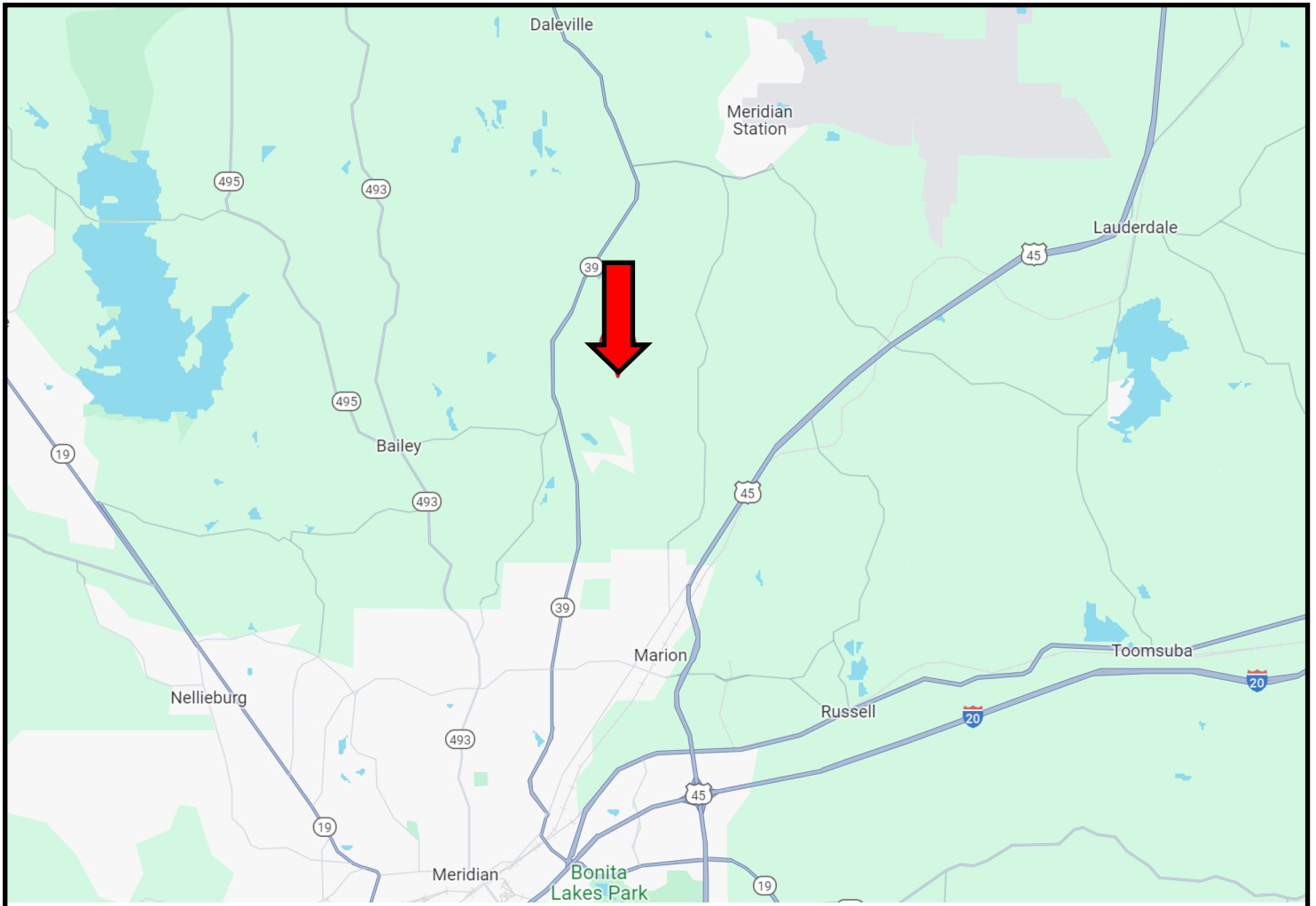


Call The Land Man Today!
TomSmithLandandHomes.com

Information is believed to be accurate but not guaranteed.



DIRECTIONAL MAP



Directions from I-20 and Highway 39 in Meridian, MS: Travel Highway 39 North for 9.7 miles. Take a right onto Ponta Hills Road. After 1.7 miles, The home will be on your right.

384 Ponta Hills Road, Meridian, MS 39305



TOM SMITH
ALC®, BROKER
Office: 601.898.2772
Cell: 601.454.9397
Tom@TomSmithLand.com



Call The Land Man Today!

TomSmithLandandHomes.com



Information is believed to be accurate but not guaranteed.