

# Country Living in Lauderdale County, MS

3 BR 2 BA 2,700+/- S.F. Home  
384 Ponta Hills Road  
Meridian, MS



Welcome to your new home in a charming neighborhood in Lauderdale County, MS. This three-bedroom, two-bath brick house sits on a spacious 2.30± acre lot, featuring a fenced backyard with a small workshop, an attached two-car garage, and an office. Enjoy the open floor plan with high ceilings in the living room, a spacious kitchen, and a large family room with a beautiful stone fireplace as the centerpiece for your entertainment. The sizeable primary suite features a bathroom with a jetted tub as well as walk-in closets. Enjoy the large deck overlooking the wooded property while enjoying your beverage of choice and watching the sunset! A wooded landscape surrounds the property and provides plenty of outdoor space. Conveniently located near all Meridian has to offer. The home is being sold as is. Call Tom to schedule your private tour today!



**TOM  
SMITH**

ALC®, BROKER

Office: 601.898.2772

Cell: 601.454.9397

Tom@TomSmithLand.com



Expect More. Get More.

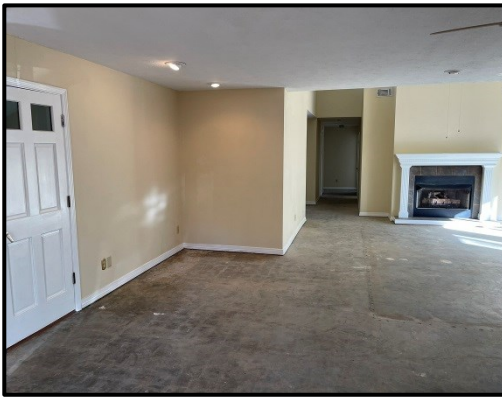
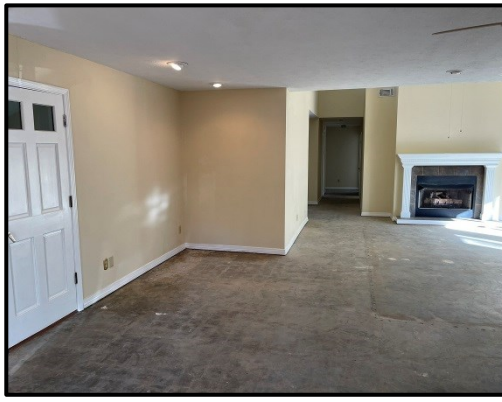
## Call The Land Man Today!

TomSmithLandandHomes.com

Information is believed to be accurate but not guaranteed.







# The Land & Homes Expert You Can Trust!

**TOM SMITH**

ALC®, BROKER

O: 601.898.2772 C: 601.454.9397

Tom@TomSmithLand.com

TomSmithLandandHomes.com



Expect More. Get More.



Information is believed to be accurate but not guaranteed.





# The Land & Homes Expert *You Can Trust!*

**TOM SMITH**

ALC®, BROKER

O: 601.898.2772 C: 601.454.9397

Tom@TomSmithLand.com

TomSmithLandandHomes.com



Expect More. Get More.



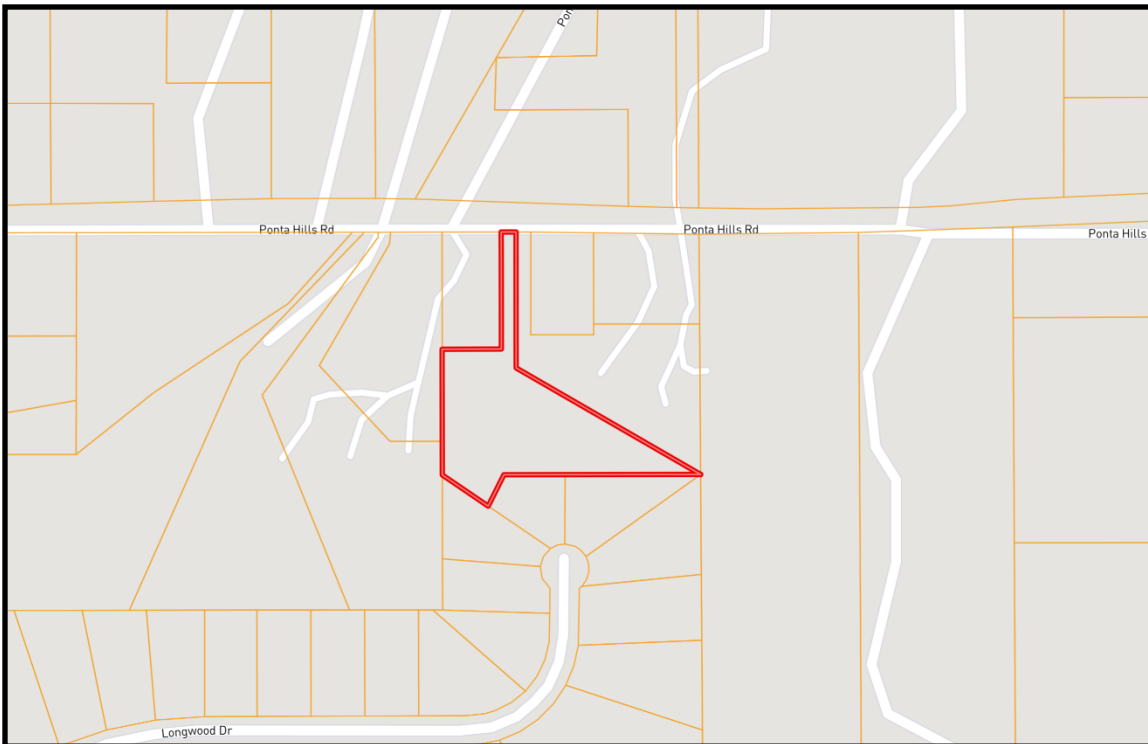
Information is believed to be accurate but not guaranteed.





# AERIAL MAP

[LandId Interactive Map Link](#)



# OWNERSHIP MAP

**The Land & Homes Expert**  
*You Can Trust!*

**TOM SMITH**

ALC®, BROKER

O: 601.898.2772 C: 601.454.9397

Tom@TomSmithLand.com

TomSmithLandandHomes.com

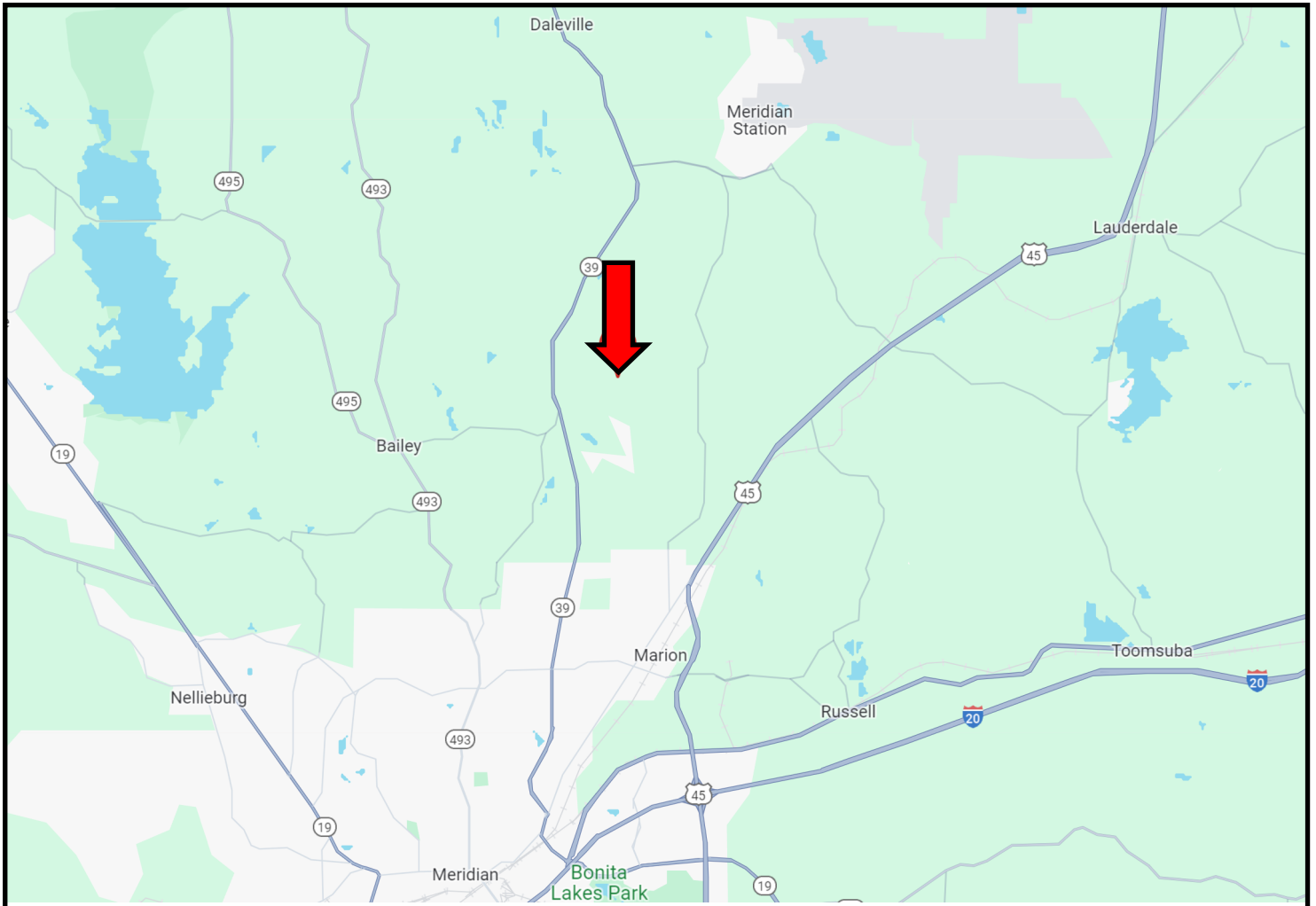


Expect More. Get More.



Information is believed to be accurate but not guaranteed.

# DIRECTIONAL MAP



**Directions from I-20 and Highway 39 in Meridian, MS:** Travel Highway 39 North for 9.7 miles. Take a right onto Ponta Hills Road. After 1.7 miles, The home will be on your right.

384 Ponta Hills Road, Meridian, MS 39305



**TOM  
SMITH**

ALC®, BROKER

Office: 601.898.2772

Cell: 601.454.9397

Tom@TomSmithLand.com



Expect More. Get More.

**Call The Land Man Today!**

TomSmithLandandHomes.com

Information is believed to be accurate but not guaranteed.

