
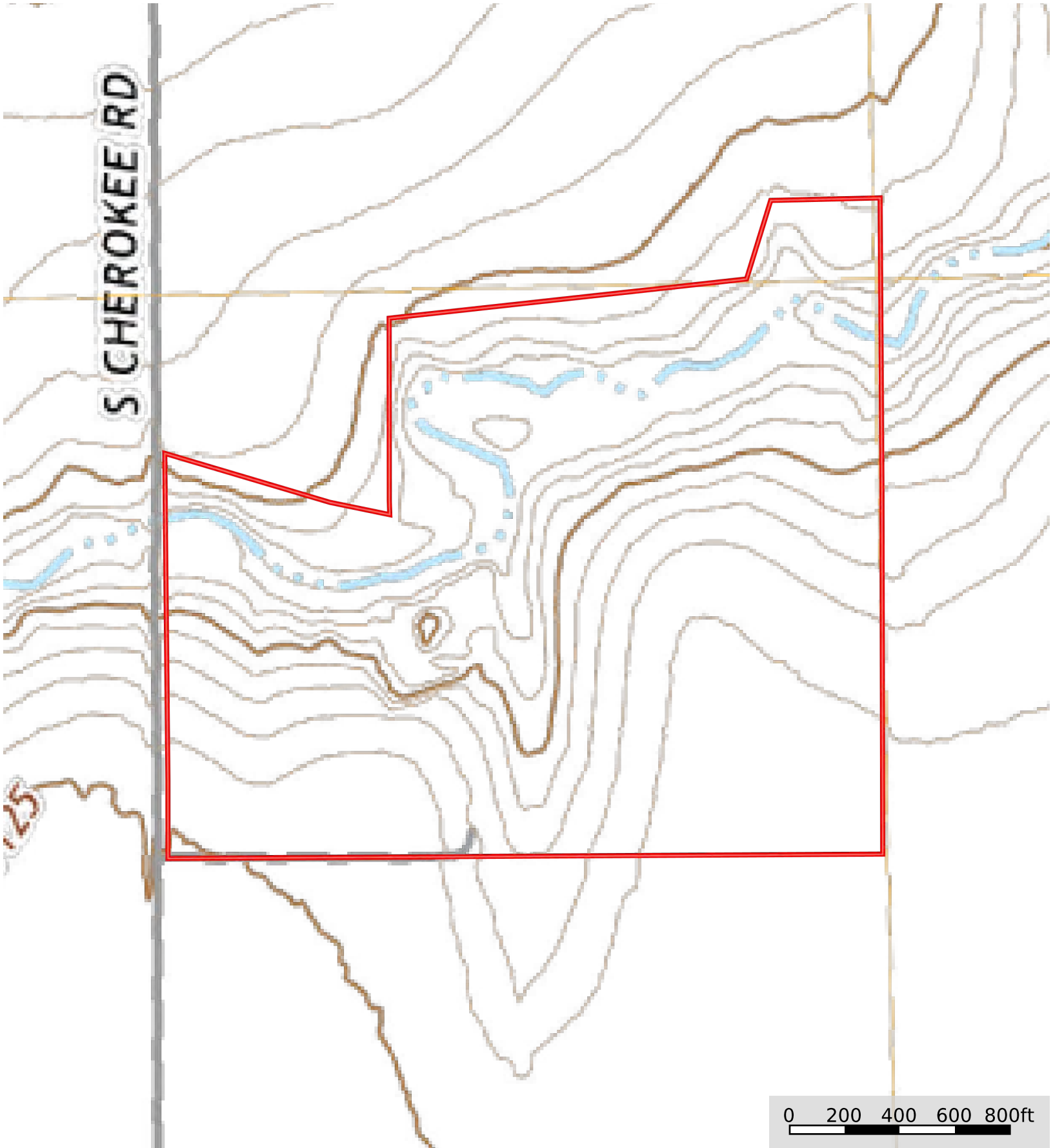



0 200 400 600 800ft

 Boundary



 Boundary



 Boundary

|  Boundary 112.12 ac

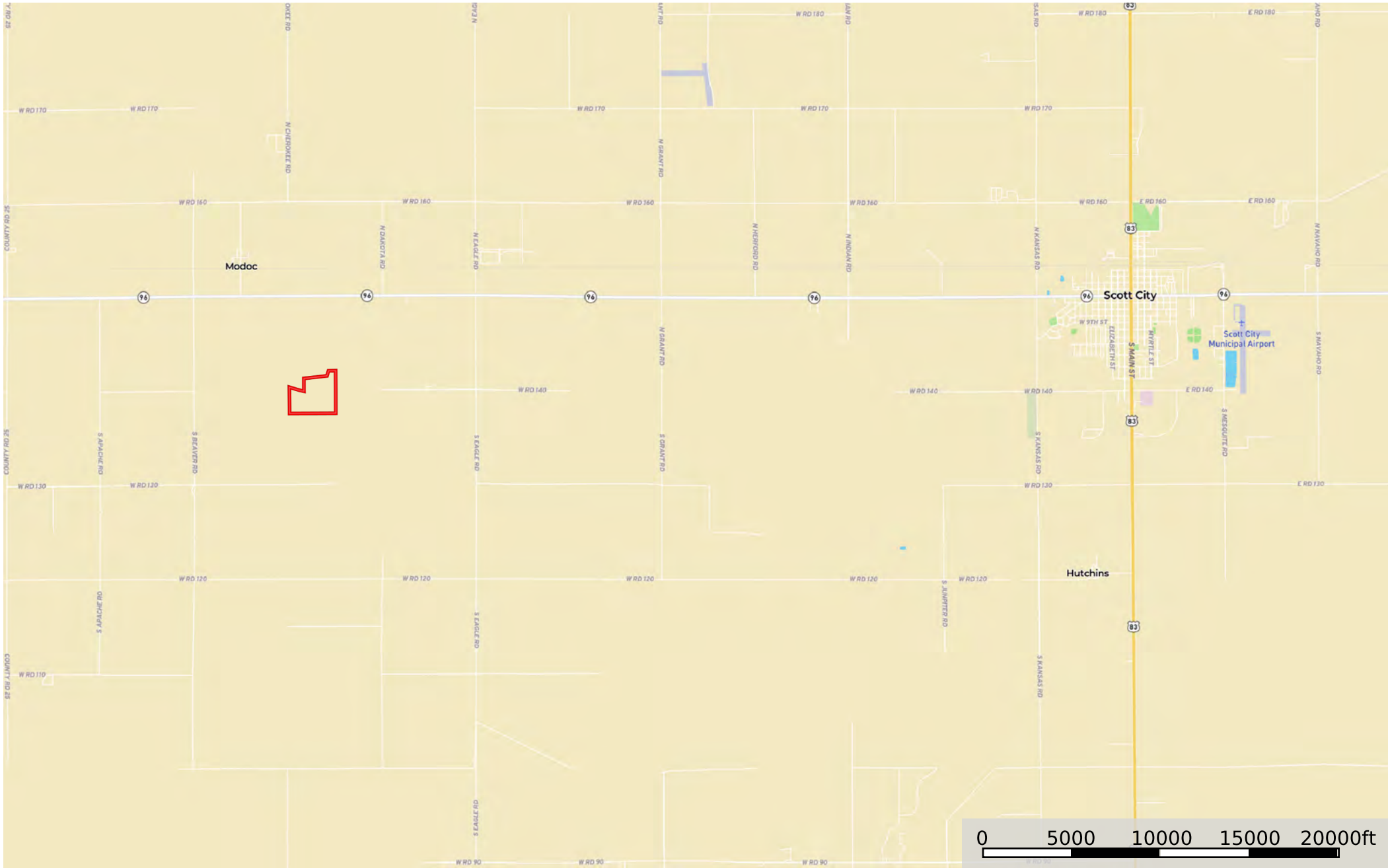
SOIL CODE	SOIL DESCRIPTION	ACRES	%	CPI	NCCPI	CAP
1580	Colby silt loam, 6 to 15 percent slopes	54.13	48.27	0	48	6e
1857	Ulysses silt loam, 1 to 3 percent slopes	25.23	22.5	0	64	3e
1761	Richfield silt loam, 0 to 1 percent slopes	18.87	16.83	0	66	3c
1859	Ulysses silt loam, 3 to 6 percent slopes	13.89	12.39	0	49	3e
TOTALS		112.12(*)	100%	-	54.75	4.45

(*) Total acres may differ in the second decimal compared to the sum of each acreage soil. This is due to a round error because we only show the acres of each soil with two decimal.



Scott05

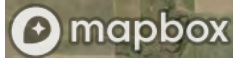
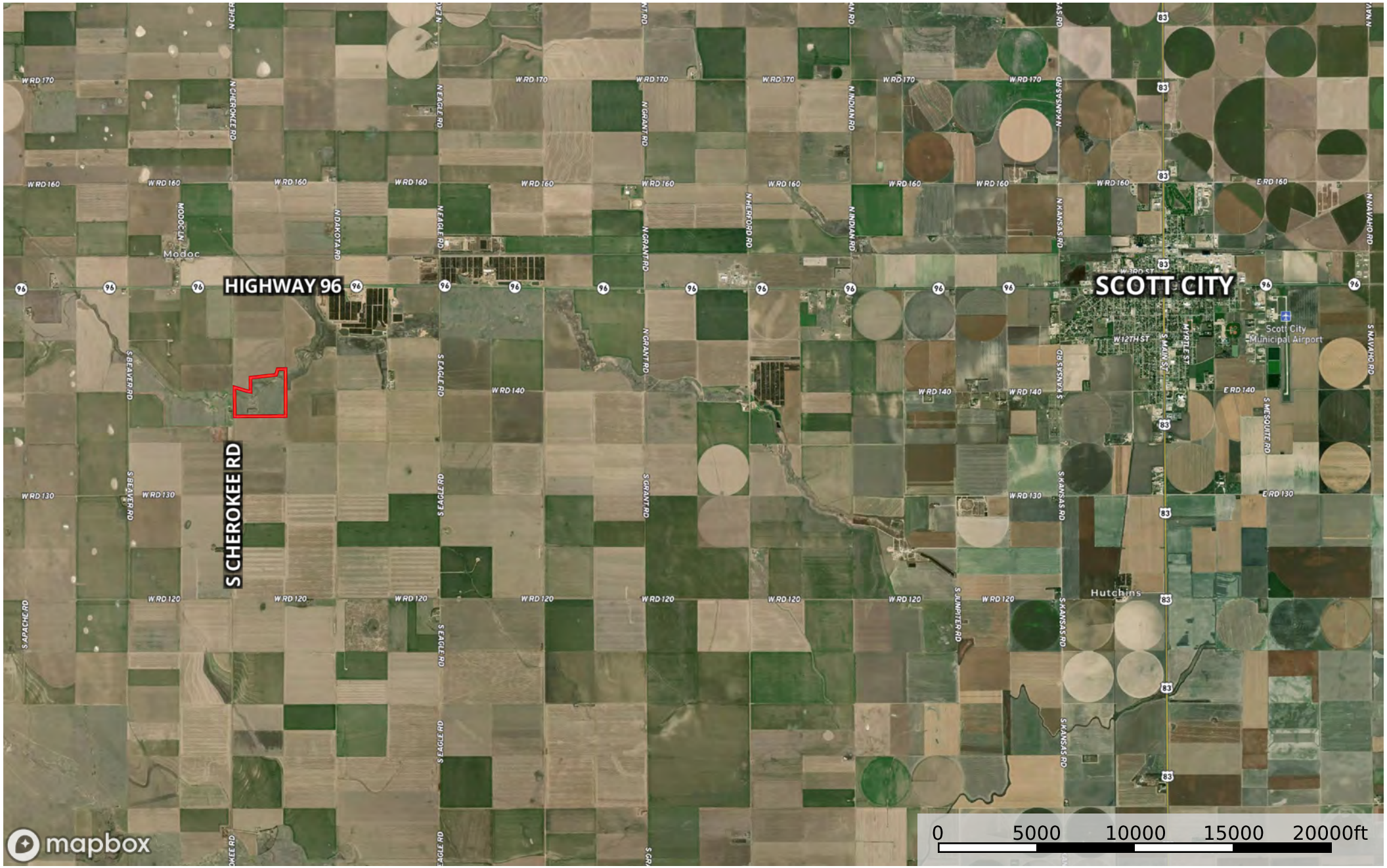
Scott County, Kansas, 112.21 AC +/-



 Boundary

Scott05

Scott County, Kansas, 112.21 AC +/-



Boundary