

Newly Updated Home

Bolivar County, MS



Address: 1717 Terrace Road Cleveland, MS 38732

Look at this newly updated home with 1,700 square feet, three bedrooms, and two bathrooms in Cleveland, Bolivar County, MS. This open floor plan offers plenty of space to cook in the kitchen and be part of the conversation in the living room. The house is located in a desirable neighborhood on a dead-end street, which offers plenty of privacy for you to enjoy the fenced-in backyard and screened-in porch. This house is also located next to Bear Pen Park, where you can enjoy fishing, feeding the ducks, or watching Little League baseball. This will make someone the perfect home. For a private showing, call Sarah Reese today!

Directions from Cleveland, MS: Travel West on Hwy 8 for approximately 1.7 miles. Turn left onto Bishop Rd. and travel 0.9 miles. Turn right onto Terrace Rd. After 0.5 miles, the house will be on the left at the dead end. [Click for Google Maps.](#)



**SARAH REESE
WRIGHT**

REALTOR®

Office: 662.441.2500

Cell: 662.641.6696

SarahReese@TomSmithLand.com



Expect More. Get More.

A Real Estate Expert You Can Trust

TomSmithLandandHomes.com

Information is believed to be accurate but not guaranteed.





Call me today!

SARAH-REESE WRIGHT, REALTOR®
SarahReese@TomSmithLand.com
662.441.2500 office | 662.641.6696 cell



TomSmithLandandHomes.com

Information is believed to be accurate but not guaranteed.



Call me today!

SARAH-REESE WRIGHT, REALTOR®
SarahReese@TomSmithLand.com
662.441.2500 office | 662.641.6696 cell



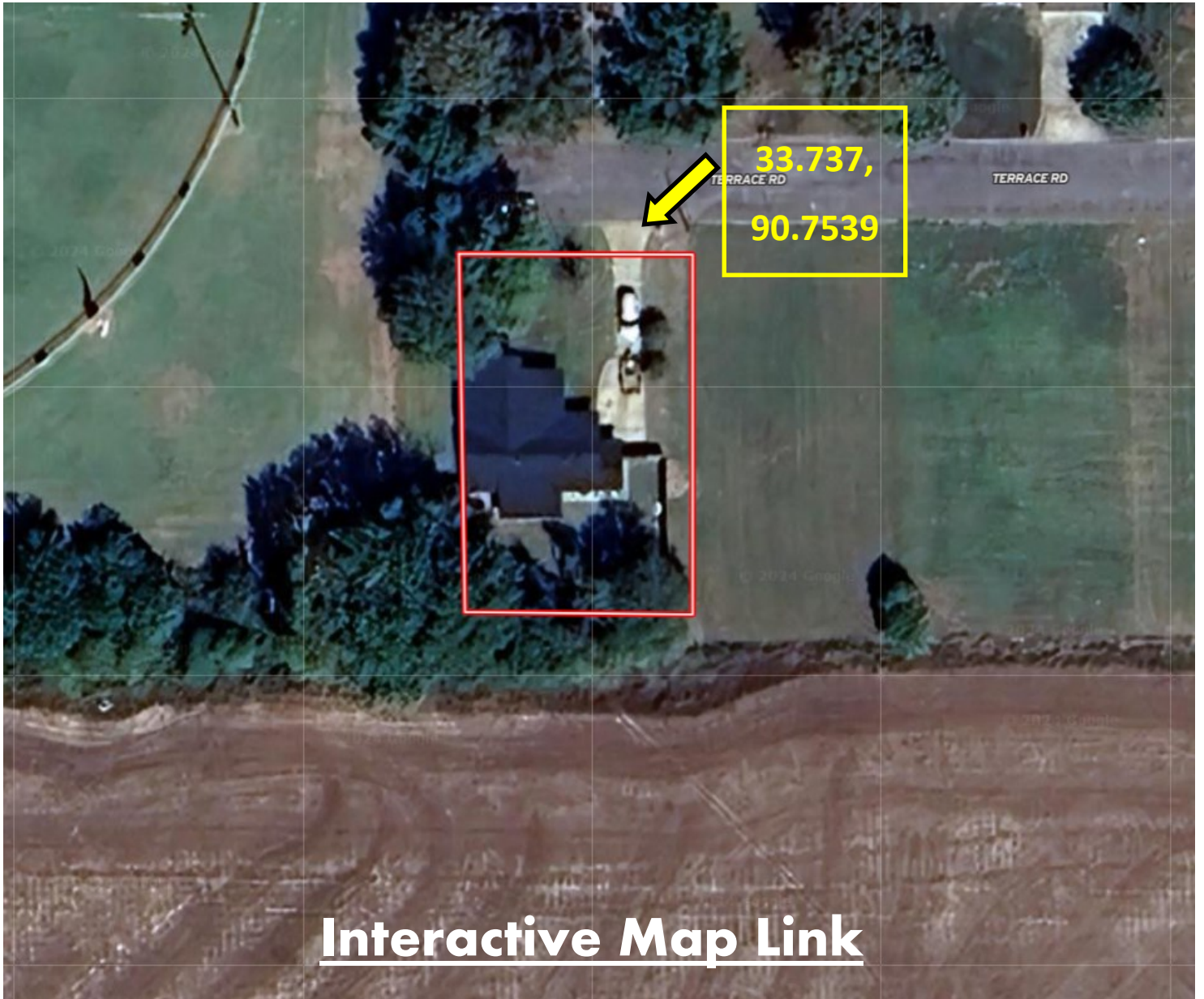
Expect More. Get More.



TomSmithLandandHomes.com

Information is believed to be accurate but not guaranteed.

Aerial Map



*Call me
today!*

SARAH-REESE WRIGHT, REALTOR®
SarahReese@TomSmithLand.com
662.441.2500 office | 662.641.6696 cell



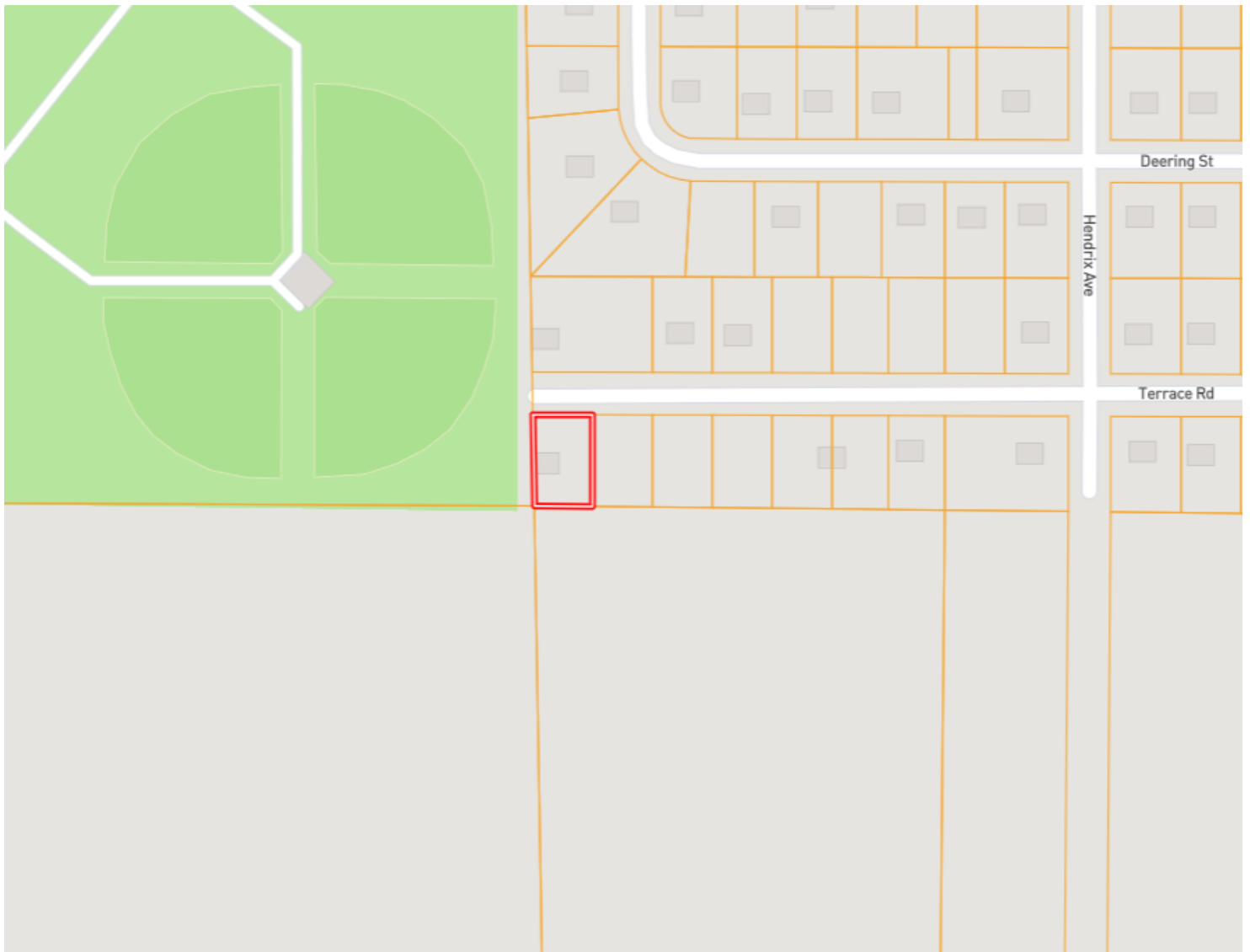
Expect More. Get More.



TomSmithLandandHomes.com

Information is believed to be accurate but not guaranteed.

Ownership Map



Call me today!

SARAH-REESE WRIGHT, REALTOR®
SarahReese@TomSmithLand.com
662.441.2500 office | 662.641.6696 cell



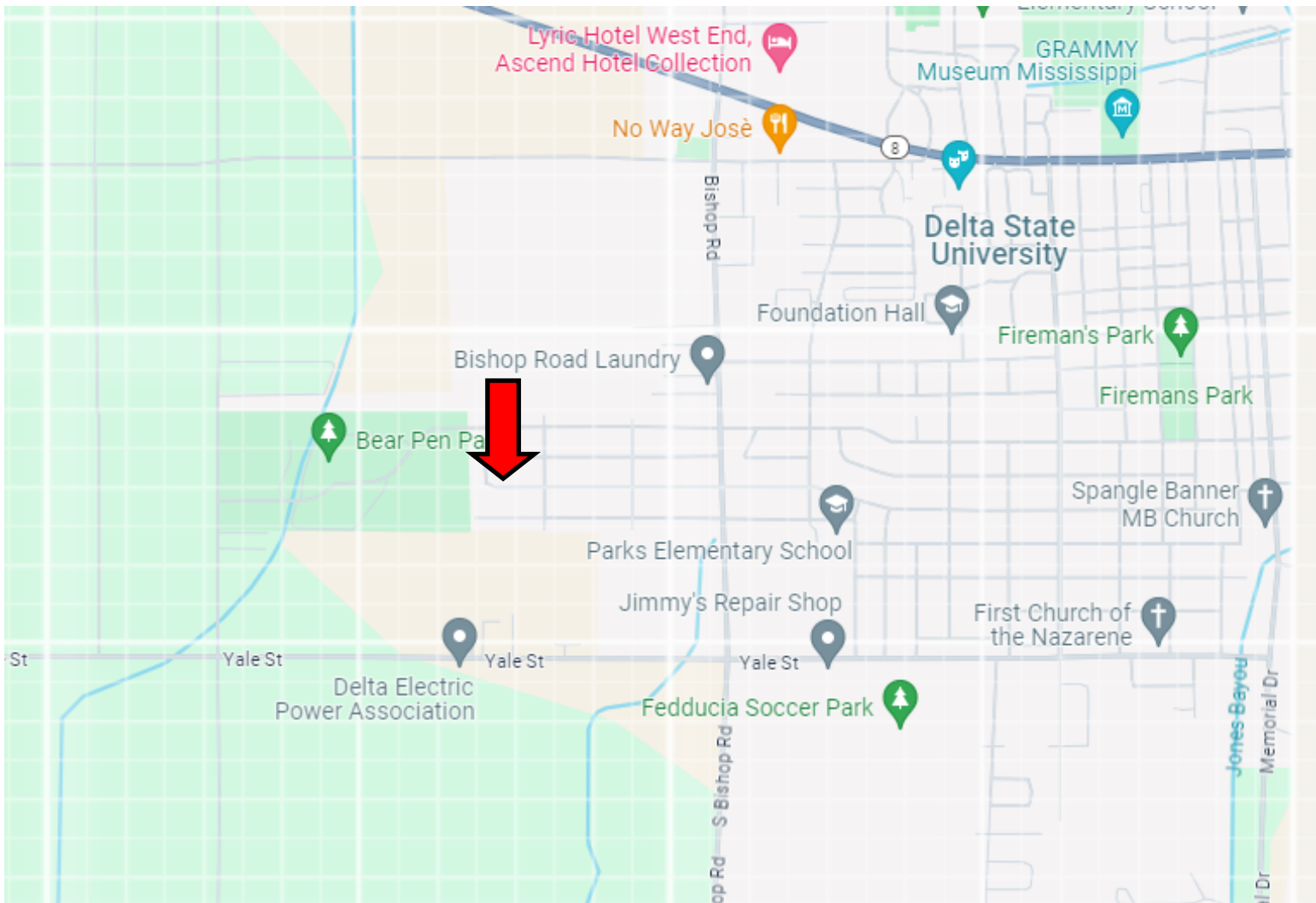
Expect More. Get More.



TomSmithLandandHomes.com

Information is believed to be accurate but not guaranteed.

Directional Map



Address: 1717 Terrace Rd. Cleveland, MS 38732

Directions from Cleveland, MS: Travel West on Hwy 8 for approximately 1.7 miles, turn left onto Bishop Rd. In 0.9 miles turn right onto Terrace Rd. and in 0.5 miles the house is on the left at the dead end. [Click for Google Maps.](#)



Call me today!

SARAH-REESE WRIGHT, REALTOR®
SarahReese@TomSmithLand.com
662.441.2500 office | 662.641.6696 cell



TomSmithLandandHomes.com

Information is believed to be accurate but not guaranteed.