

# 6 BED/4 BATH COUNTRY HOME

## Bolivar County, MS



64 HORSESHOE DRIVE MERIGOLD, MS 38759

\$469,000

- Six Bedrooms
- Four Bathrooms
- 3,091± Square Foot
- 1.01± Acre Lot
- Two Stories
- Granite Countertops
- Walk-in Pantry
- Vaulted Ceilings
- Stained Concrete Floors
- Large mud room

**Directions from the intersection of Hwy 8 and Hwy 61 Cleveland, MS:** Travel North on Hwy 61 for approximately 3.1 miles. Turn left onto Township Road and travel 1.6 miles. Turn right onto Poe Road, then after 0.4 miles turn right onto Horseshoe Dr. After 0.02 miles, the house will be on the left. [Click for Google Maps.](#)



LINDSAY  
**WILLIAMS**

REALTOR®

Office: 662.441.2500

Cell: 662.719.8118

Lindsay@TomSmithLand.com



Expect More. Get More.

A Real Estate Expert You Can Trust

TomSmithLandandHomes.com

Information is believed to be accurate but not guaranteed.



**Are you looking for a gorgeous new home? View this lovely 3,091+/- sq ft, six-bedroom, four-bathroom home located on a 1.01+/- acre lot in Bolivar County, MS. This home would be perfect for a large family looking for a spacious home for everyone to enjoy. The living area has a vaulted ceiling leading to an open kitchen area with beautiful granite countertops and a walk-in pantry. The downstairs living area consists of a laundry room, kitchen with breakfast nook, dining room, living room with built-in desk, two bedrooms, and two bathrooms. The primary bedroom has a spacious walk-in closet and a large master bath, which includes double vanities, a jetted tub, and a walk-in shower. The upstairs of the home has four bedrooms with two bathrooms and storage closets for all of your holiday decor. This home with its ideal lot size also has a covered porch on the front and rear of the house that you could utilize for outdoor entertainment for both children and adults.**

**Call Lindsay for your private showing!**



**LINDSAY WILLIAMS**

REALTOR®

Office: 662.441.2500

Cell: 662.719.8118

Lindsay@TomSmithLand.com

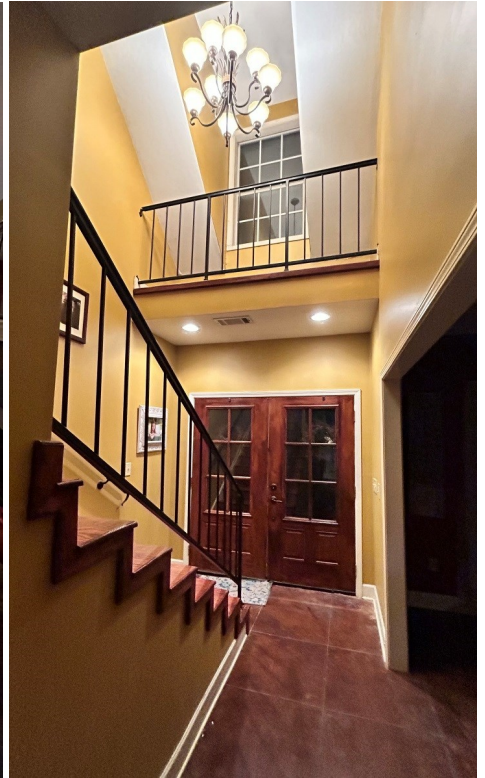


**A Real Estate Expert You Can Trust**

TomSmithLandandHomes.com

Information is believed to be accurate but not guaranteed.





**LINDSAY WILLIAMS**

REALTOR®

Office: 662.441.2500

Cell: 662.719.8118

Lindsay@TomSmithLand.com



**A Real Estate Expert You Can Trust**

TomSmithLandandHomes.com

Information is believed to be accurate but not guaranteed.





**LINDSAY WILLIAMS**

REALTOR®

Office: 662.441.2500

Cell: 662.719.8118

Lindsay@TomSmithLand.com



**A Real Estate Expert You Can Trust**

TomSmithLandandHomes.com

Information is believed to be accurate but not guaranteed.





**LINDSAY WILLIAMS**

REALTOR®

Office: 662.441.2500

Cell: 662.719.8118

Lindsay@TomSmithLand.com

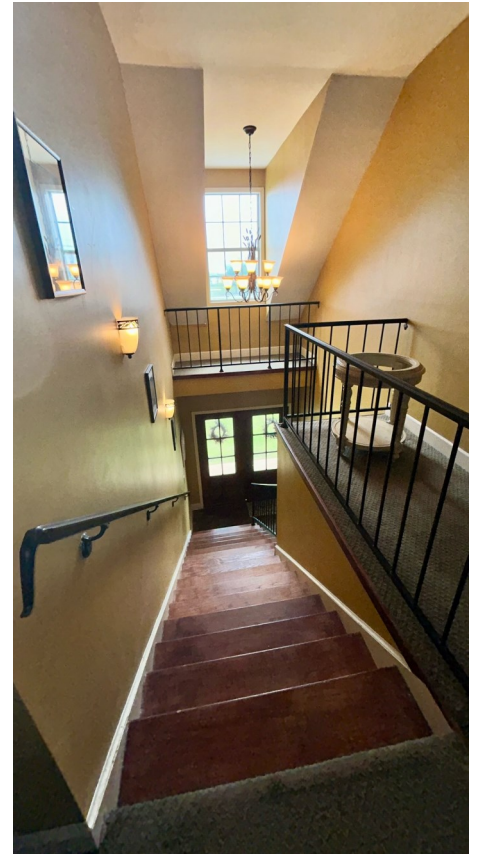


**A Real Estate Expert You Can Trust**

TomSmithLandandHomes.com

Information is believed to be accurate but not guaranteed.





**LINDSAY WILLIAMS**

REALTOR®

Office: 662.441.2500

Cell: 662.719.8118

Lindsay@TomSmithLand.com



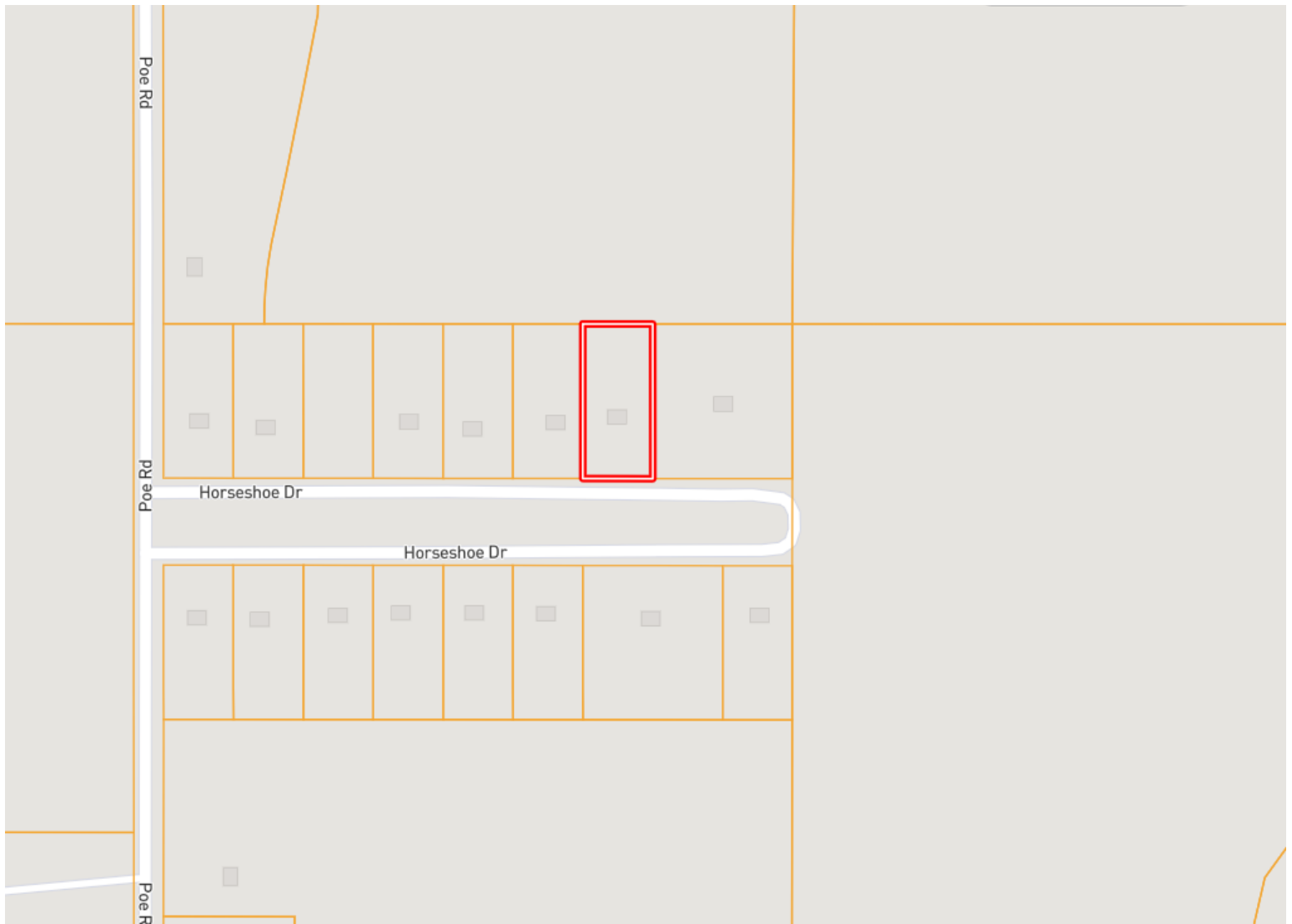
**A Real Estate Expert You Can Trust**

TomSmithLandandHomes.com

Information is believed to be accurate but not guaranteed.



# OWNERSHIP MAP



**LINDSAY WILLIAMS**

REALTOR®

Office: 662.441.2500

Cell: 662.719.8118

Lindsay@TomSmithLand.com



**A Real Estate Expert You Can Trust**

TomSmithLandandHomes.com

Information is believed to be accurate but not guaranteed.



# Aerial Map



[Click for Interactive Map](#)

**LINDSAY WILLIAMS**

REALTOR®

Office: 662.441.2500

Cell: 662.719.8118

Lindsay@TomSmithLand.com



**A Real Estate Expert You Can Trust**

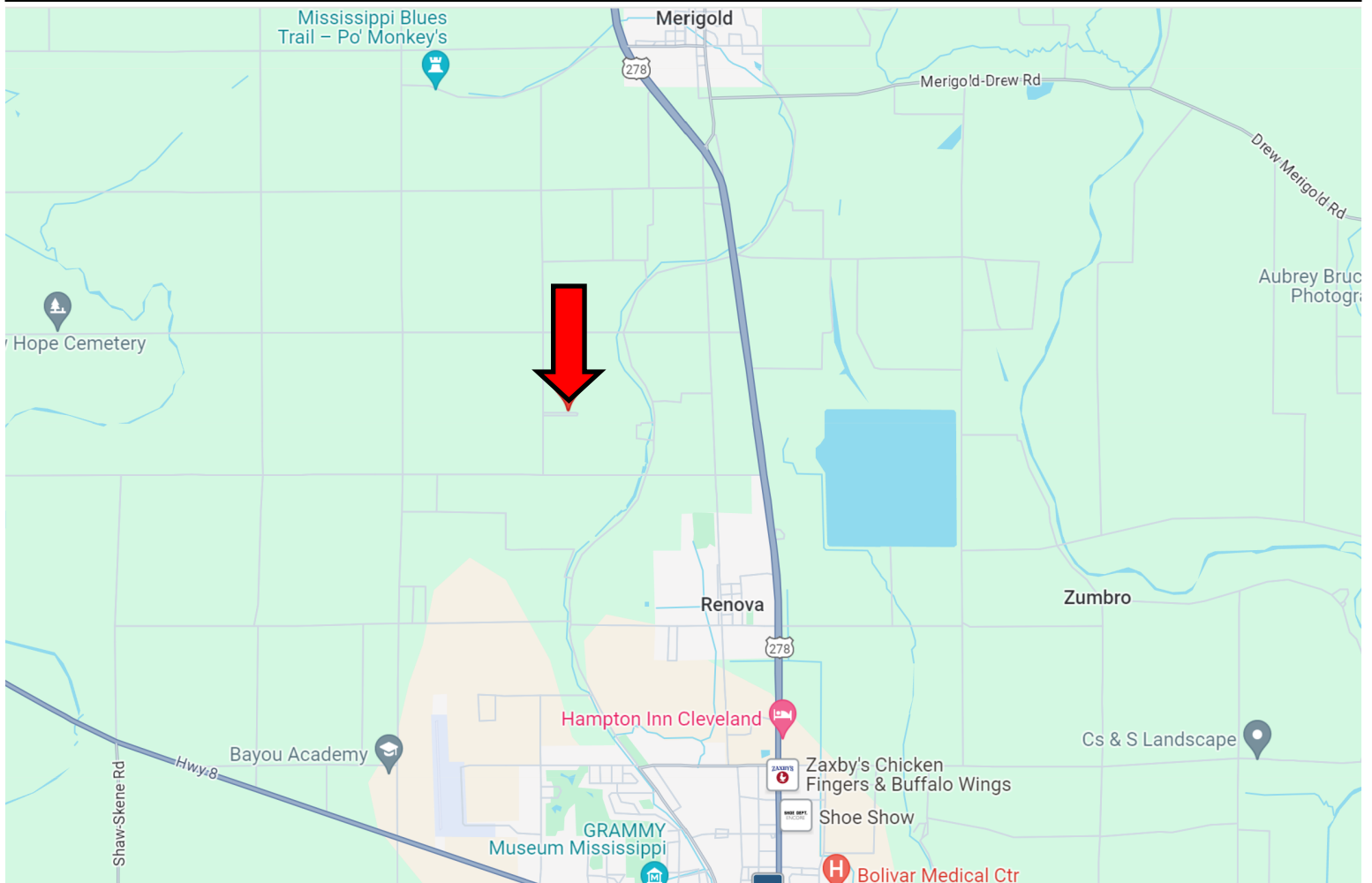
TomSmithLandandHomes.com

Information is believed to be accurate but not guaranteed.

2011-2023  
**BEST**  
BROKERAGES



# DIRECTIONAL MAP



**Address: 64 Horseshoe Drive Merigold, MS 38759**

**Directions from the intersection of Hwy 8 and Hwy 61 Cleveland, MS:** Travel North on Hwy 61 for approximately 3.1 miles. Turn left onto Township Road and travel 1.6 miles. Turn right onto Poe Road, then after 0.4 miles turn right onto Horseshoe Dr. After 0.02 miles, the house will be on the left.

[Click for Google Maps.](#)



LINDSAY  
**WILLIAMS**  
REALTOR®

Office: 662.441.2500

Cell: 662.719.8118

Lindsay@TomSmithLand.com



Expect More. Get More.

**A Real Estate Expert You Can Trust**

TomSmithLandandHomes.com

Information is believed to be accurate but not guaranteed.

