

Washington County Multi-Family Investment Opportunity



2222 Robinson Lane Greenville, MS 38701 \$395,000

Great investment opportunity in Washington County, Mississippi! This four-bedroom, four-bathroom property is located just off Highway 1 South in Greenville, MS. It sits on a large 0.69± acre city lot. The property features stainless appliances, a large open kitchen, granite countertops, tile and hardwood floors, a pea gravel driveway, a new roof, vaulted ceilings, and a spacious floor plan. A two-bedroom, two-bathroom guest house sits just on the property's edge, perfect for entertaining, additional suites, or potential rental property. Call today for your private showing!



**EMERSON
LOVELACE**

REALTOR®

Office: 662.441.2500

Cell: 601.715.3302

Emerson@TomSmithLand.com



A Real Estate Expert You Can Trust

TomSmithLandandHomes.com

Information is believed to be accurate but not guaranteed.





EMERSON LOVELACE

REALTOR®
Office: 662.441.2500
Cell: 601.715.3302
Emerson@TomSmithLand.com



A Real Estate Expert You Can Trust

TomSmithLandandHomes.com

Information is believed to be accurate but not guaranteed.





EMERSON LOVELACE

REALTOR®

Office: 662.441.2500

Cell: 601.715.3302

Emerson@TomSmithLand.com



A Real Estate Expert You Can Trust

TomSmithLandandHomes.com

Information is believed to be accurate but not guaranteed.





EMERSON LOVELACE

REALTOR®
Office: 662.441.2500
Cell: 601.715.3302
Emerson@TomSmithLand.com



A Real Estate Expert You Can Trust

TomSmithLandandHomes.com

Information is believed to be accurate but not guaranteed.





**EMERSON
LOVELACE**

REALTOR®

Office: 662.441.2500

Cell: 601.715.3302

Emerson@TomSmithLand.com



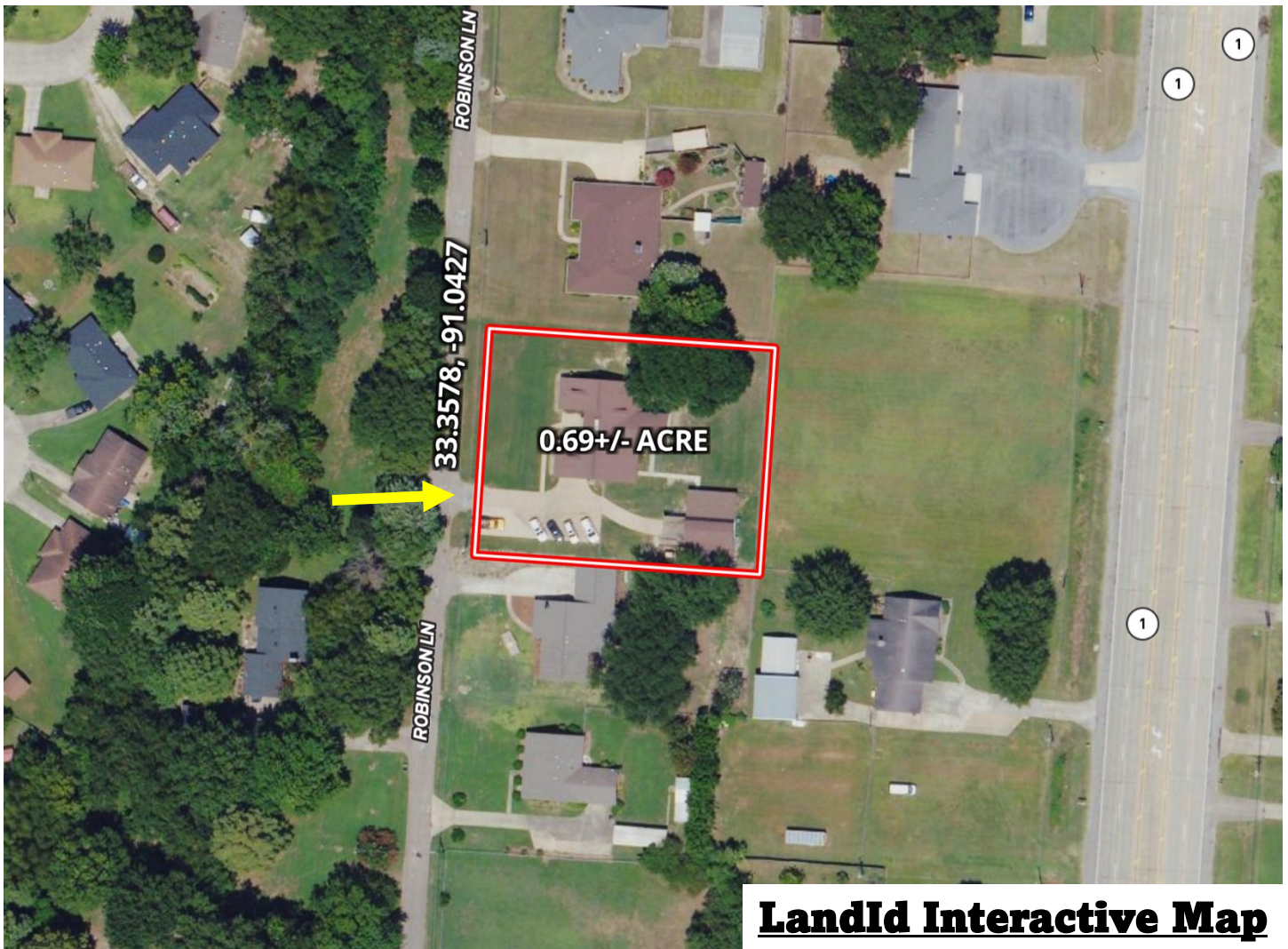
A Real Estate Expert You Can Trust

TomSmithLandandHomes.com

Information is believed to be accurate but not guaranteed.



Aerial Map



EMERSON
LOVELACE

REALTOR®

Office: 662.441.2500

Cell: 601.715.3302

Emerson@TomSmithLand.com



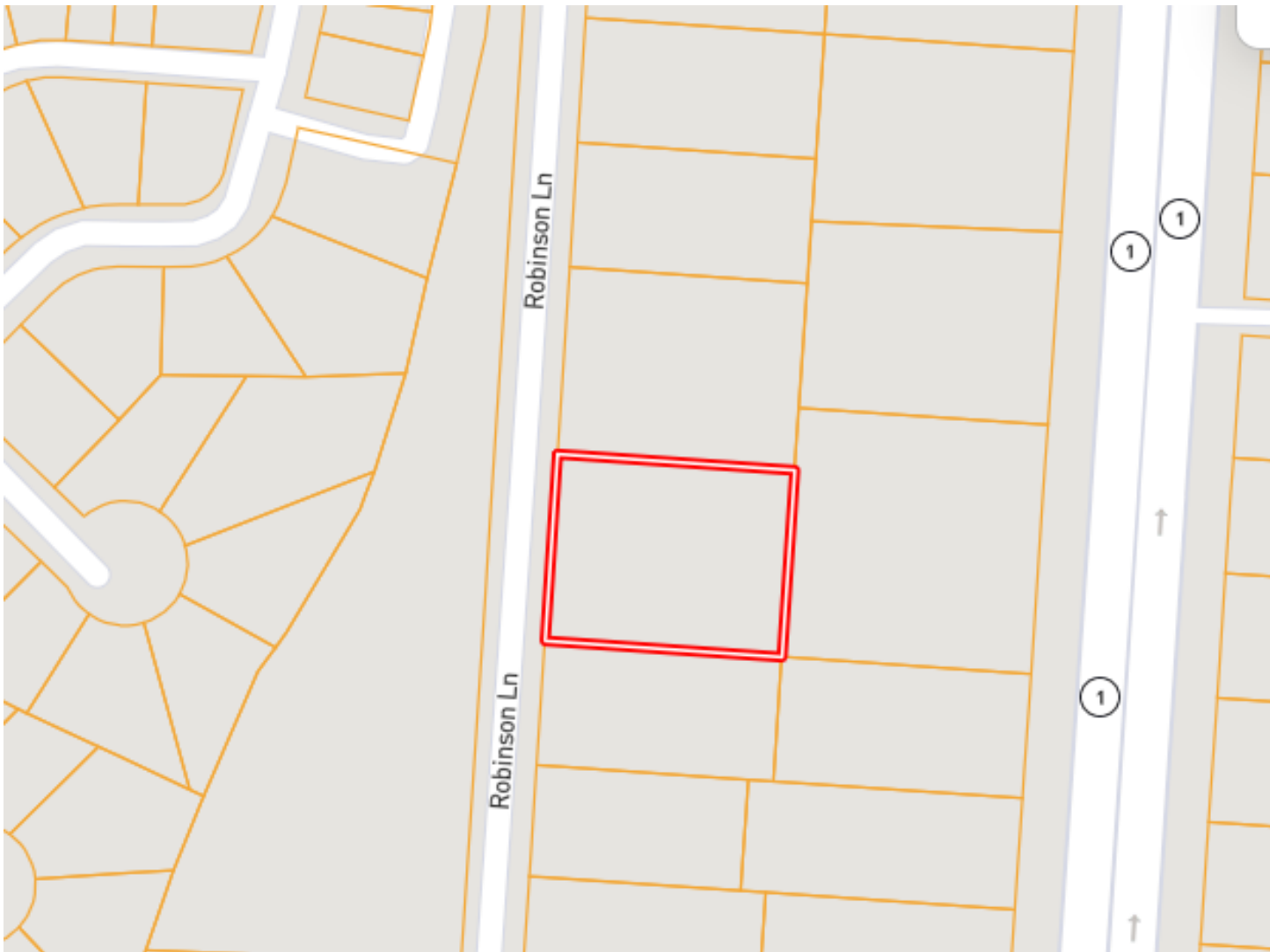
A Real Estate Expert You Can Trust

TomSmithLandandHomes.com

Information is believed to be accurate but not guaranteed.



Ownership Map



EMERSON
LOVELACE

REALTOR®

Office: 662.441.2500

Cell: 601.715.3302

Emerson@TomSmithLand.com



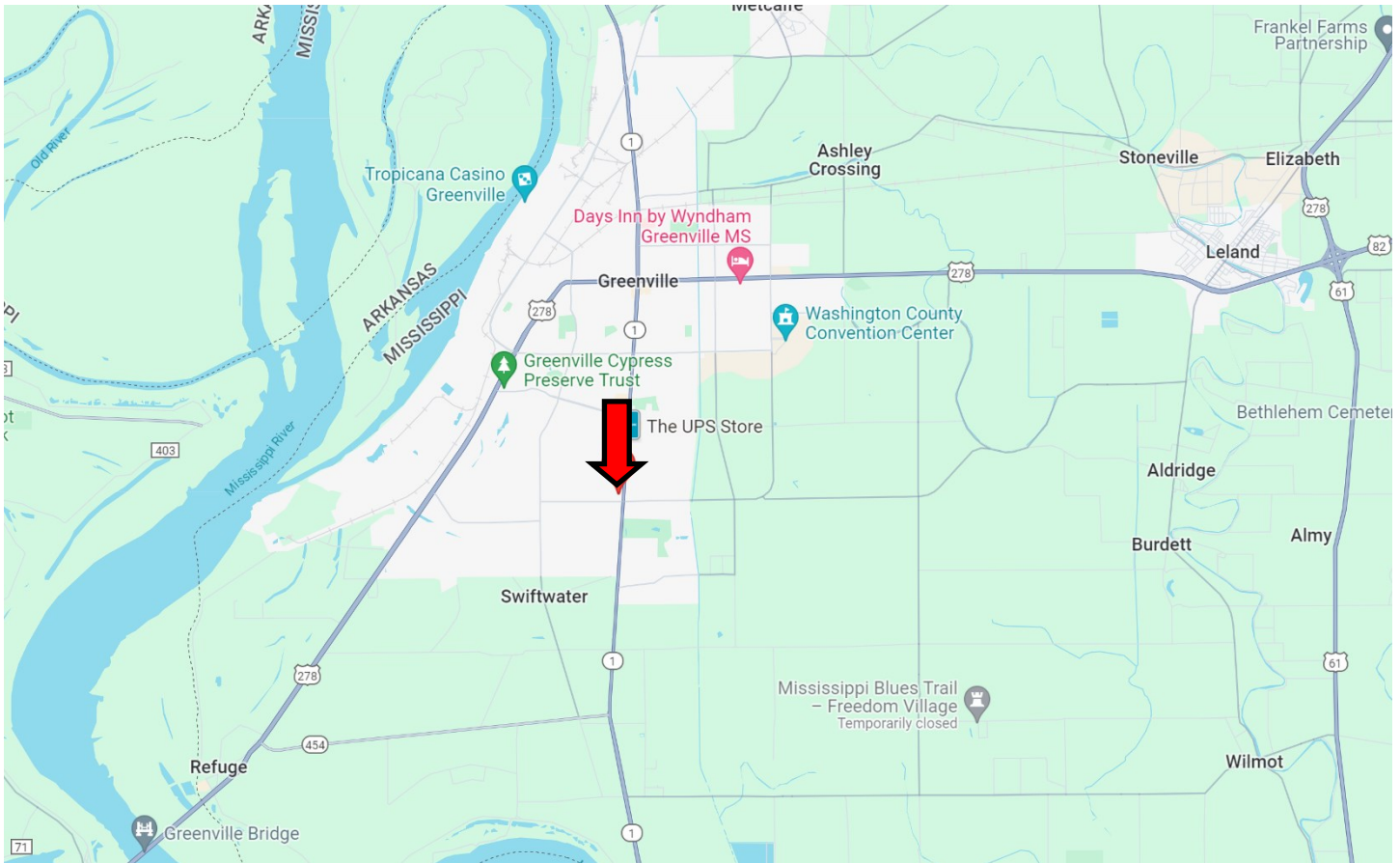
A Real Estate Expert You Can Trust

TomSmithLandandHomes.com

Information is believed to be accurate but not guaranteed.



Directional Map



Directions from the intersection of Hwy 278/Hwy 82 and Hwy 1 in Greenville, MS: Turn onto Martin Luther King Jr. Blvd./Hwy 1 and travel 2.8 miles. Turn right onto Gamari Road, then turn left onto Robinson Ln. After 0.1 mile, the home will be on the left.

[2222 Robinson Lane, Greenville, MS 38701– Click for Google Map Link](#)



**EMERSON
LOVELACE**

REALTOR®

Office: 662.441.2500

Cell: 601.715.3302

Emerson@TomSmithLand.com



A Real Estate Expert You Can Trust

TomSmithLandandHomes.com

Information is believed to be accurate but not guaranteed.

