

DEVELOPMENT/RECREATIONAL TRACT

131.27± Acres in Oktibbeha County, MS



\$800,000

This 131.27+/- acre Oktibbeha County property is in a prime location just outside Starkville, MS. This property features internal trails, an old house/ homesite, 20-year-old mixed timber, and an approximately 4.5+/- acre lake. Power and water are available along Old Highway 12 and the existing homesite. This property also features over 2,700 feet of road frontage on Old Highway 12. This property has the development potential of Starkville's next neighborhood or your next weekend getaway! This property is one minute from Starkville and only 15 minutes from Davis Wade Stadium! Contact Walker to schedule a private showing!



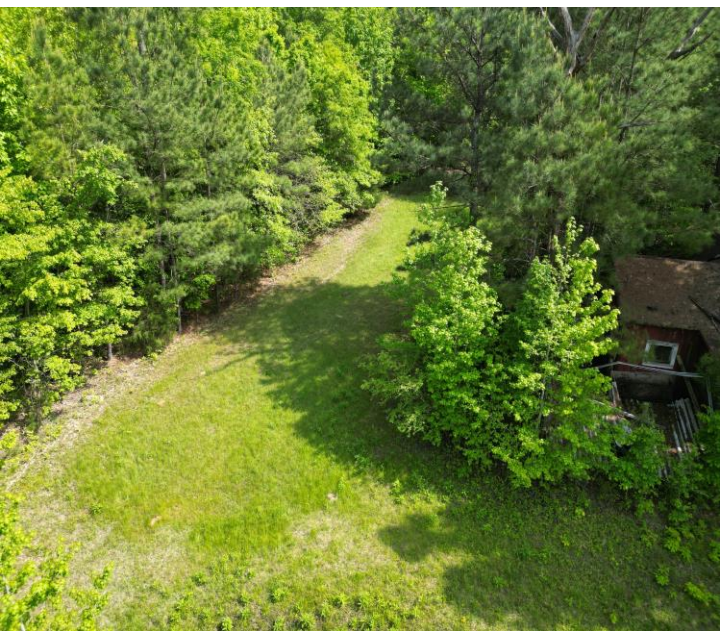
**WALKER
TRANUM**
REALTOR®
Office: 662.268.6333
Cell: 662.769.1442
Walker@TomSmithHomes.com



A Real Estate Expert You Can Trust
TomSmithLandandHomes.com

Information is believed to be accurate but not guaranteed.





**WALKER
TRANUM**
REALTOR®

Office: 662.268.6333
Cell: 662.769.1442

Walker@TomSmithHomes.com

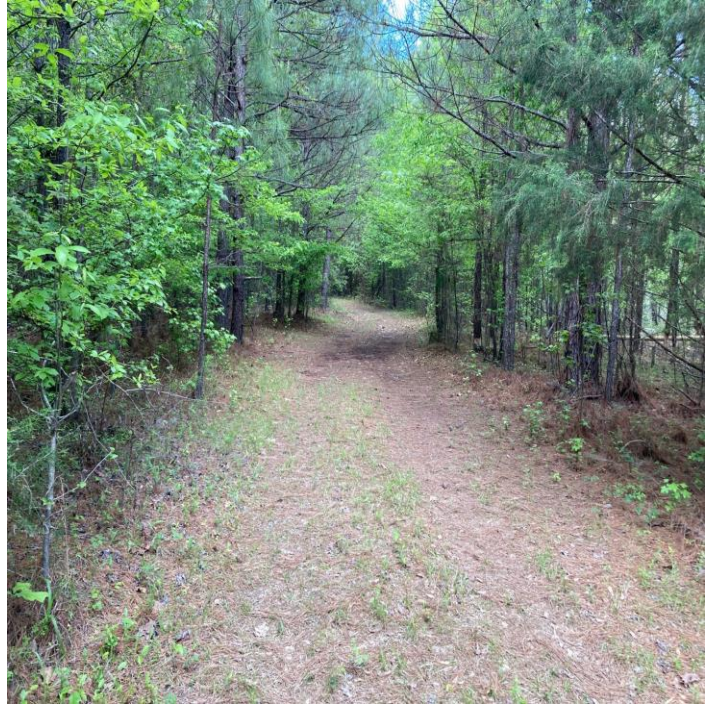


A Real Estate Expert You Can Trust

TomSmithLandandHomes.com

Information is believed to be accurate but not guaranteed.





**WALKER
TRANUM**
REALTOR®

Office: 662.268.6333
Cell: 662.769.1442

Walker@TomSmithHomes.com



A Real Estate Expert You Can Trust

TomSmithLandandHomes.com

Information is believed to be accurate but not guaranteed.

Entrepreneur
2011-2023
BEST
BROKERAGES

Aerial Map



Click [Here](#) for Interactive Map



**WALKER
TRANUM**
REALTOR®

Office: 662.268.6333
Cell: 662.769.1442

Walker@TomSmithHomes.com



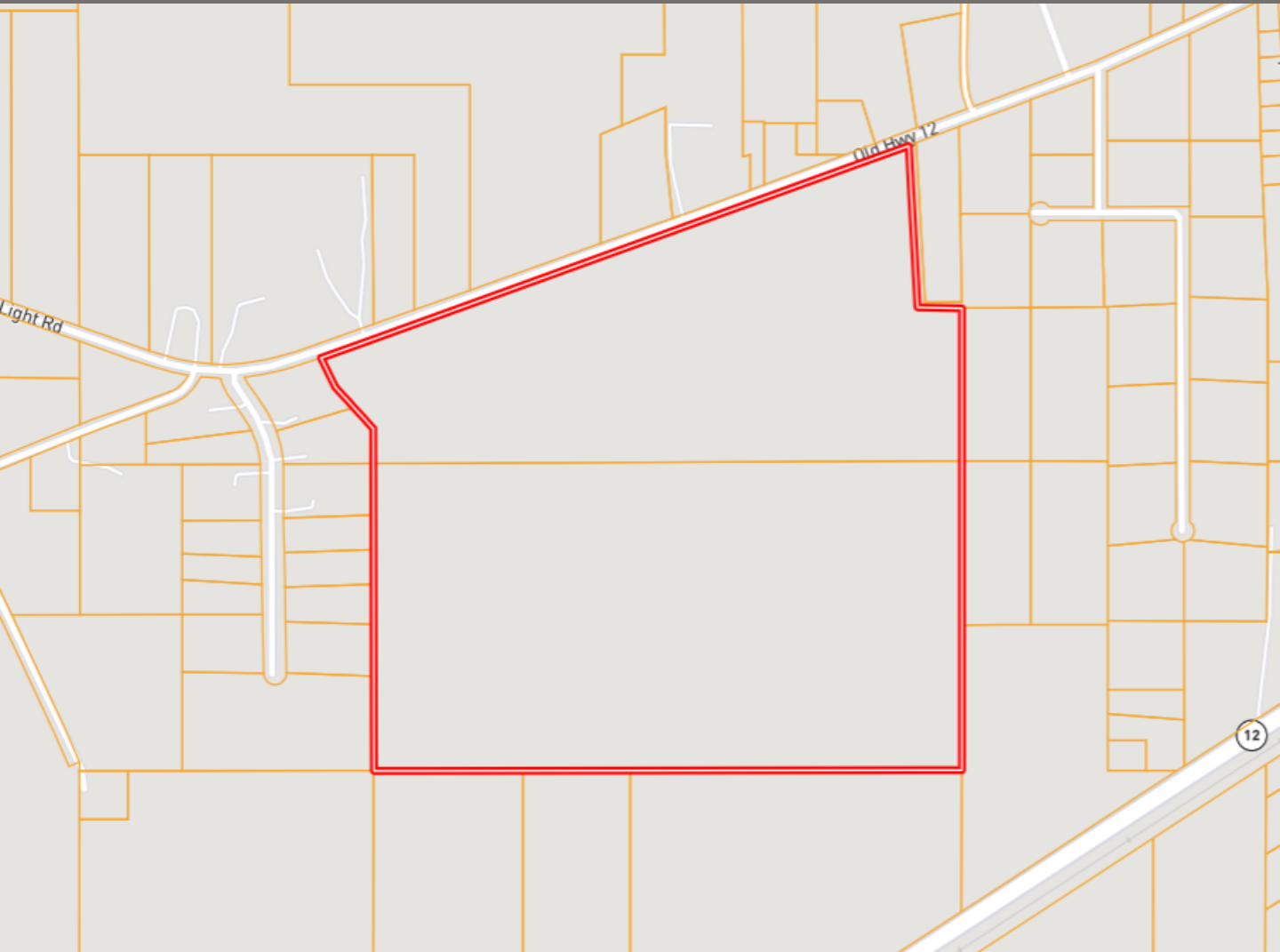
A Real Estate Expert You Can Trust

TomSmithLandandHomes.com

Information is believed to be accurate but not guaranteed.



Ownership Map



**WALKER
TRANUM**
REALTOR®

Office: 662.268.6333
Cell: 662.769.1442

Walker@TomSmithHomes.com



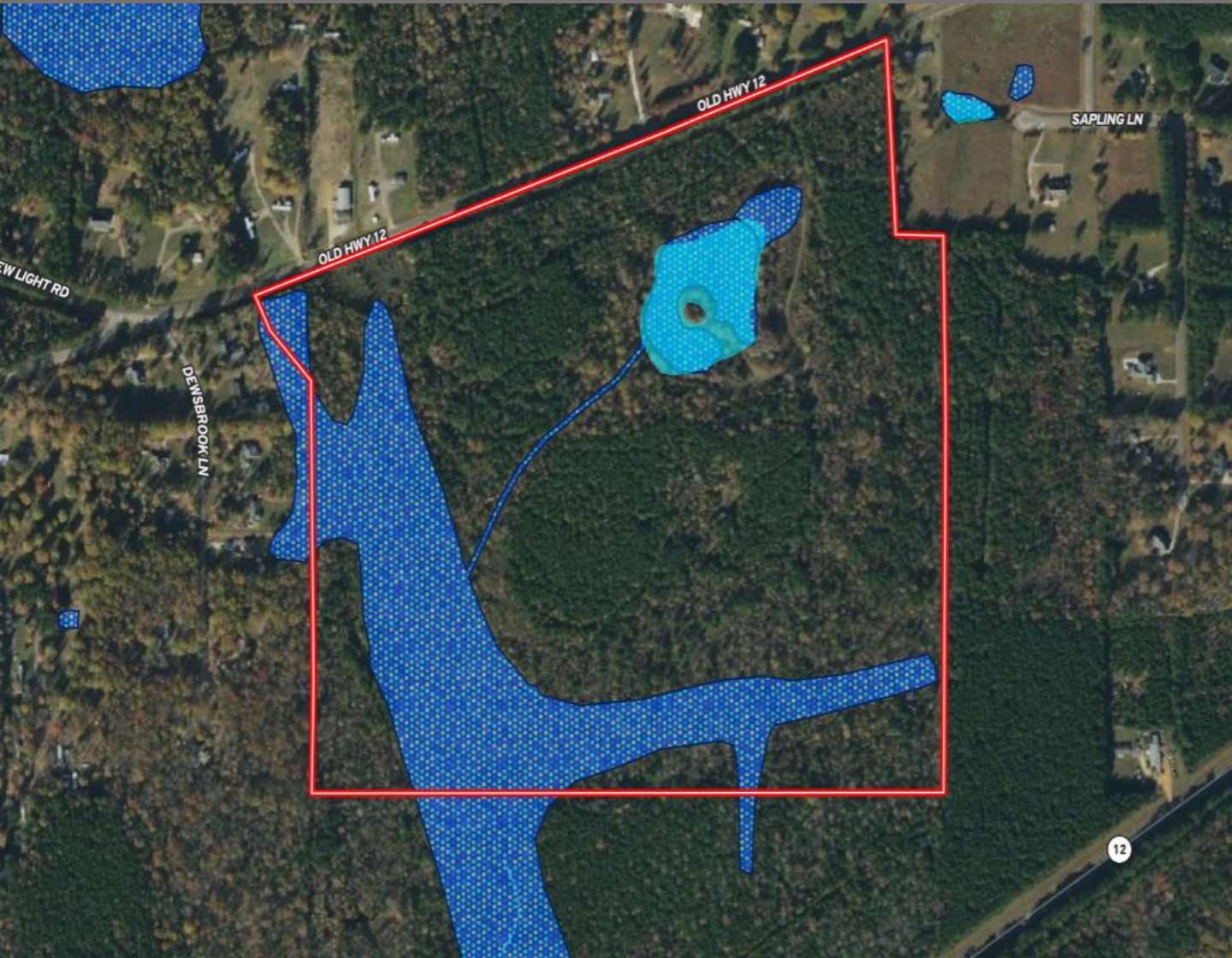
A Real Estate Expert You Can Trust

TomSmithLandandHomes.com

Information is believed to be accurate but not guaranteed.



Flood Map



**WALKER
TRANUM**
REALTOR®

Office: 662.268.6333
Cell: 662.769.1442

Walker@TomSmithHomes.com



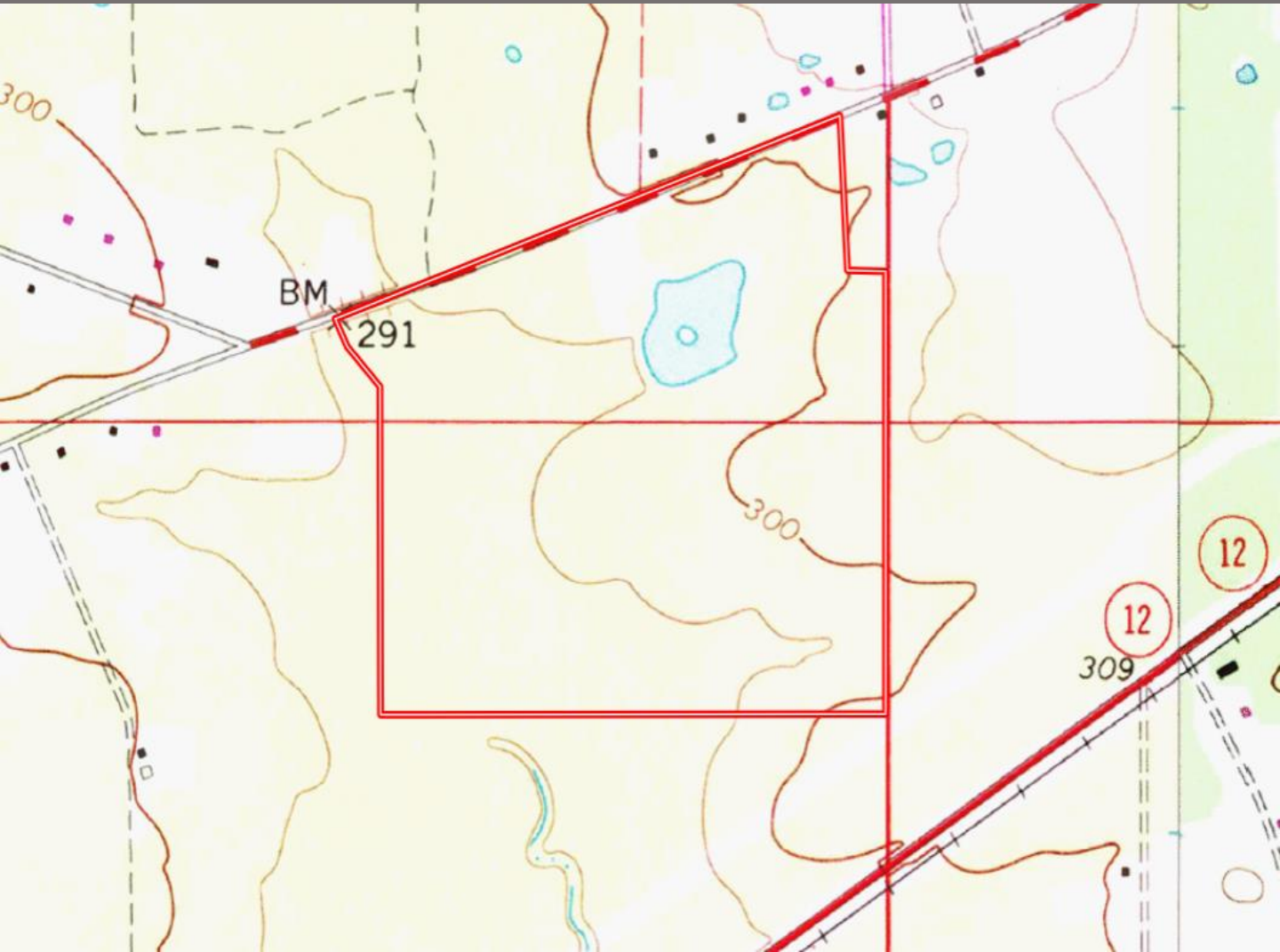
A Real Estate Expert You Can Trust

TomSmithLandandHomes.com

Information is believed to be accurate but not guaranteed.



Topography Map



**WALKER
TRANUM**
REALTOR®

Office: 662.268.6333
Cell: 662.769.1442

Walker@TomSmithHomes.com



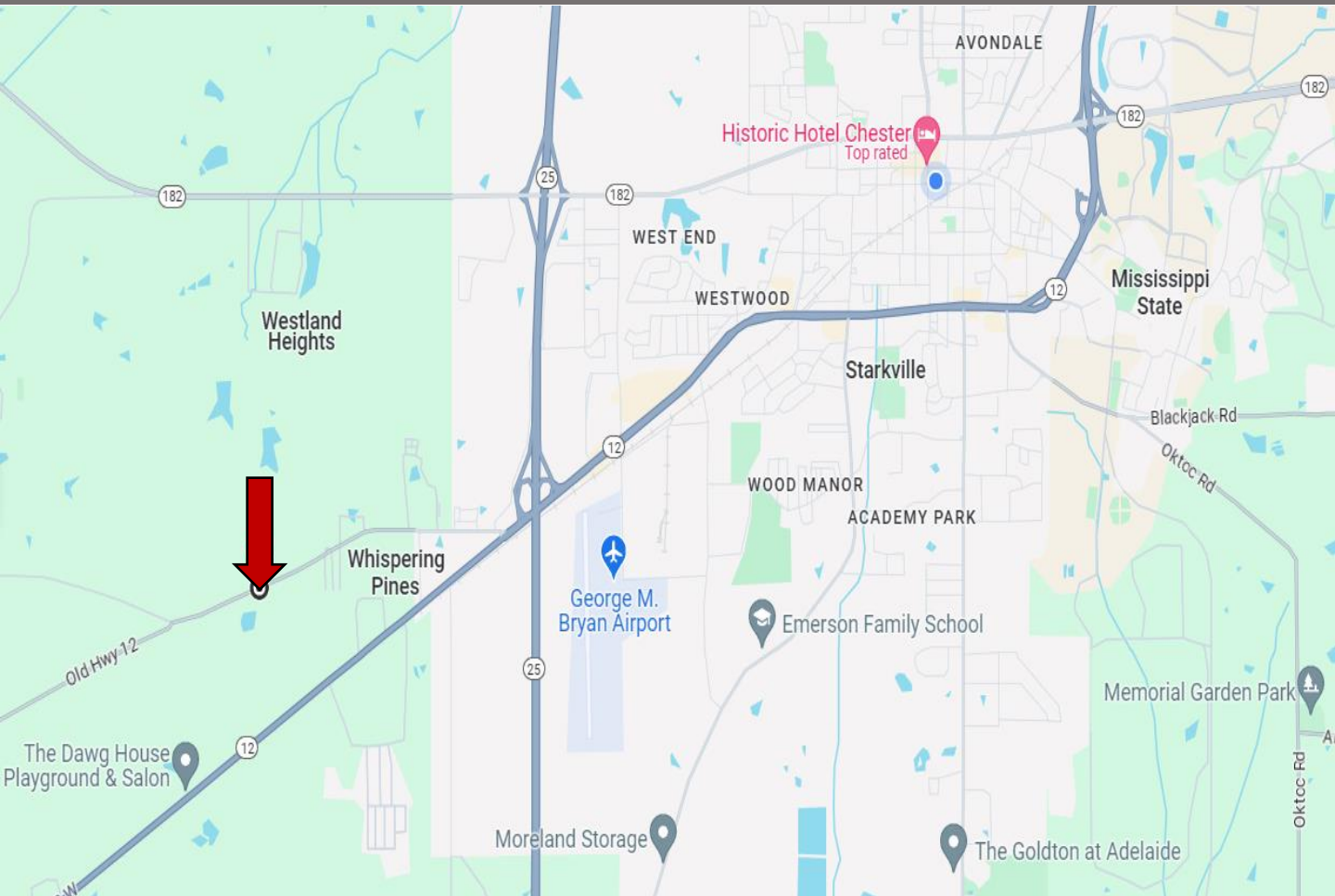
A Real Estate Expert You Can Trust

TomSmithLandandHomes.com

Information is believed to be accurate but not guaranteed.

2011-2023
BEST
BROKERAGES

Directional Map



Directions from Starkville, MS: Take Yellow Jacket Drive and Louisville Street to Mississippi Highway 12 West. Travel Highway 12 West for 2.3 miles. Take a slight right onto Old Highway 12. After 1.5 miles, the property will be on your left. [GOOGLE MAP LINK](#)



**WALKER
TRANUM**
REALTOR®

Office: 662.268.6333
Cell: 662.769.1442

Walker@TomSmithHomes.com



A Real Estate Expert You Can Trust

TomSmithLandandHomes.com

Information is believed to be accurate but not guaranteed.

