

BOLIVAR COUNTY COMMERCIAL OPPORTUNITY

912 N. Chrisman Ave., Cleveland, MS | \$239,500



Bring your business to Cleveland, MS! This 2,400±SF metal building is on a 0.69± acre fenced lot with a large gravel and grass area at the rear of the building. Inside, you will find an office or apartment space along with two bathrooms. If you are looking for a shop with plenty of outdoor storage, give Tracey Bell a call to schedule your private showing!



TRACEY
BELL

MANAGING BROKER

Office: 662.441.2500

Cell: 662.719.4720

Tracey@TomSmithLand.com



Expect More. Get More.

A Real Estate Expert You Can Trust

TomSmithLandandHomes.com

Information is believed to be accurate but not guaranteed.





**TRACEY
BELL**

MANAGING BROKER

Office: 662.441.2500

Cell: 662.719.4720

Tracey@TomSmithLand.com

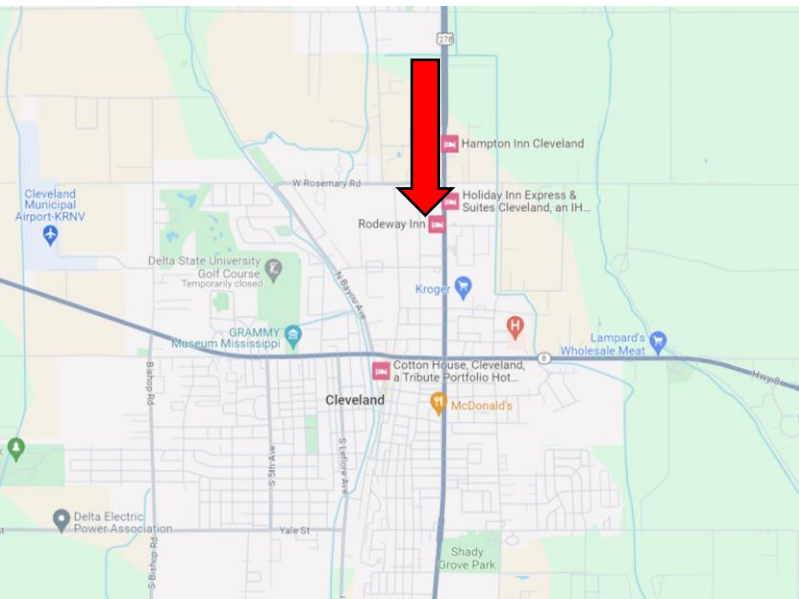
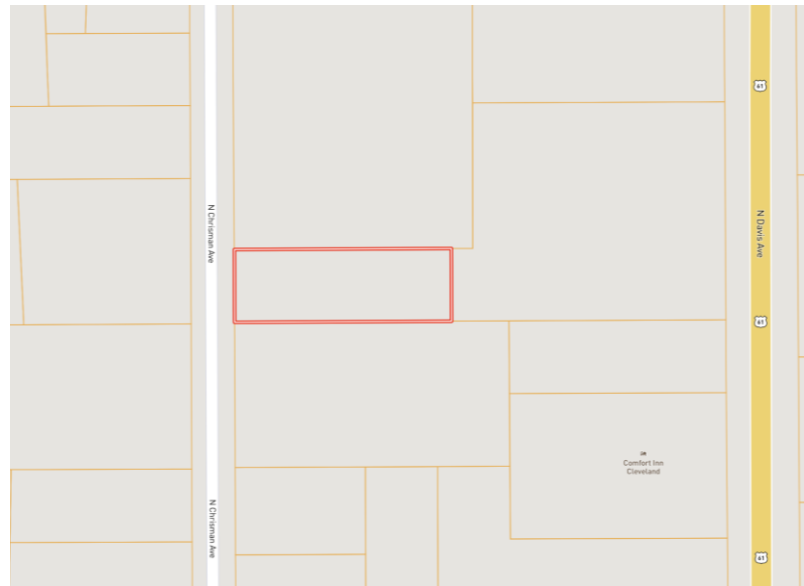


A Real Estate Expert You Can Trust
TomSmithLandandHomes.com

Information is believed to be accurate but not guaranteed.



MAPS | [Click for Interactive Map](#)



Address: 912 N. Chrisman Avenue,
Cleveland, MS 38732

Directions from Hwy 8 & Hwy 61 in Cleveland, MS:
Travel north on Hwy 61 for half of a mile. Turn left onto E. Carpenter Street and travel 0.1 mile. Turn right onto N. Chrisman Avenue. After 0.3 miles, the property will be on the right. [Click for Google Maps.](#)



**TRACEY
BELL**
MANAGING BROKER
Office: 662.441.2500
Cell: 662.719.4720
Tracey@TomSmithLand.com



A Real Estate Expert You Can Trust
TomSmithLandandHomes.com

Information is believed to be accurate but not guaranteed.

