



# 111 Thomas Street Cleveland, MS

## \$164,500

This three-bedroom, two-bathroom home offers ample space for gathering as it offers two living areas. The 1,685± SF home was built on a slab in 1955 in Cleveland, Bolivar County, MS. The kitchen boasts a large island, gas range, and stainless-steel appliances. The home's exterior has great curb appeal and a fenced backyard for kids and pets to play outside safely. The property also serves as a great investment opportunity as it adjoins Delta State University.

Call Tracey to schedule a private showing!



**TRACEY  
BELL**

MANAGING BROKER

Office: 662.441.2500

Cell: 662.719.4720

Tracey@TomSmithLand.com



Expect More. Get More.

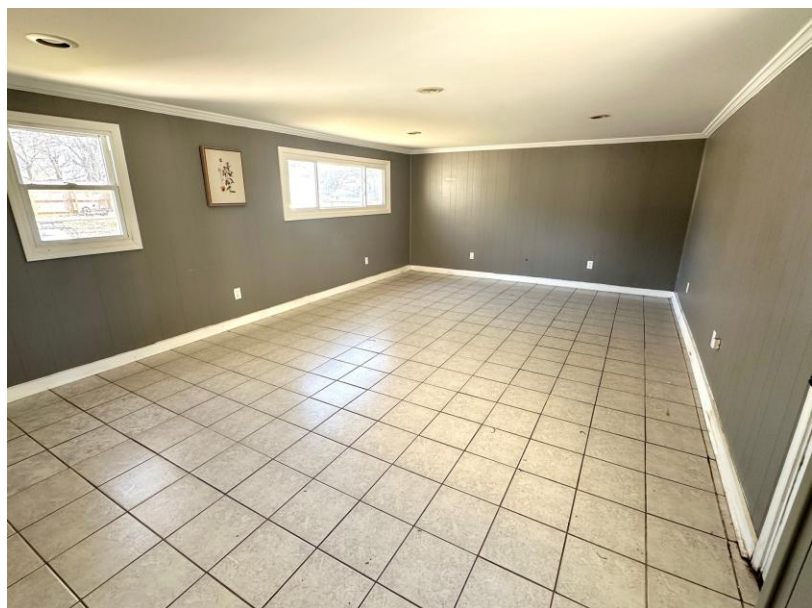
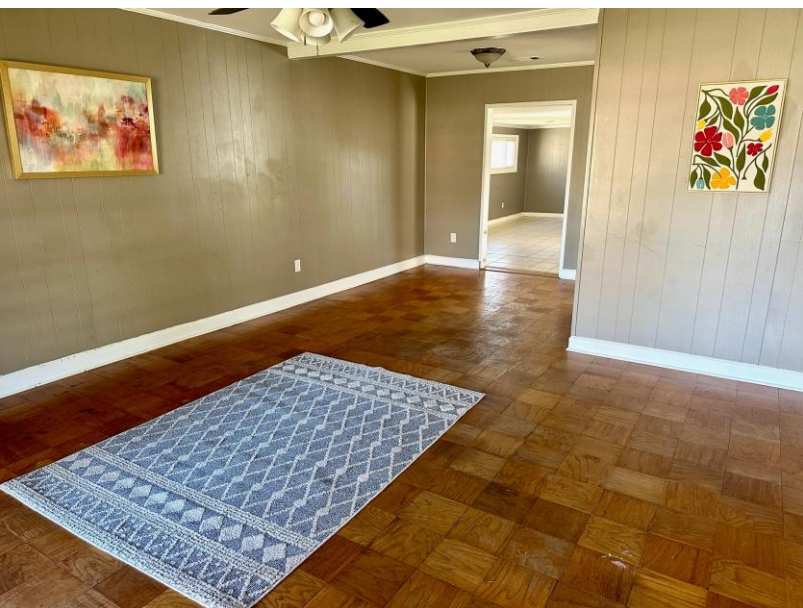
## A Real Estate Expert You Can Trust

TomSmithLandandHomes.com

Information is believed to be accurate but not guaranteed.







**TRACEY  
BELL**

MANAGING BROKER

Office: 662.441.2500

Cell: 662.719.4720

Tracey@TomSmithLand.com



**A Real Estate Expert You Can Trust**  
TomSmithLandandHomes.com

Information is believed to be accurate but not guaranteed.







- 3 Bedrooms
- 2 Bathrooms
- 1,685 ± SF
- Built in 1955
- 0.26± Acre Lot
- Two Living Areas
- Stainless Steel Appliances
- Large Kitchen Island
- Fenced Backyard
- Metal Roof
- Attached Carport
- Close to Delta State University



**TRACEY  
BELL**

MANAGING BROKER

Office: 662.441.2500

Cell: 662.719.4720

Tracey@TomSmithLand.com



**A Real Estate Expert You Can Trust**

TomSmithLandandHomes.com

Information is believed to be accurate but not guaranteed.







**TRACEY  
BELL**

MANAGING BROKER

Office: 662.441.2500

Cell: 662.719.4720

Tracey@TomSmithLand.com

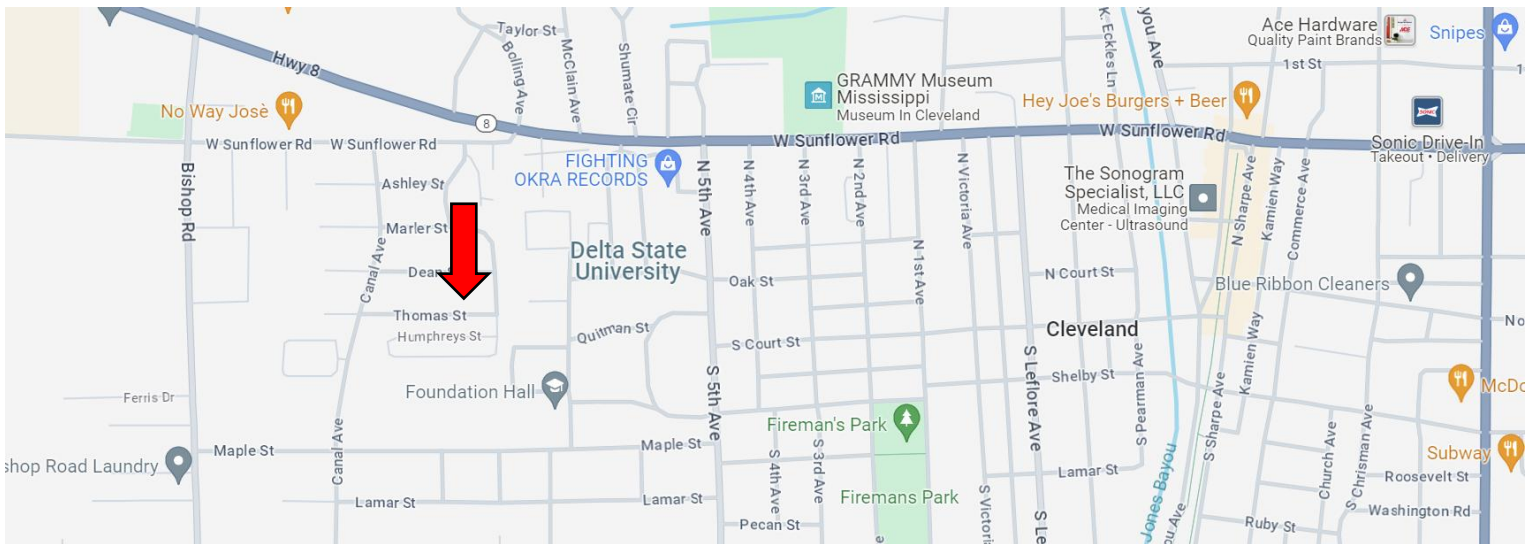
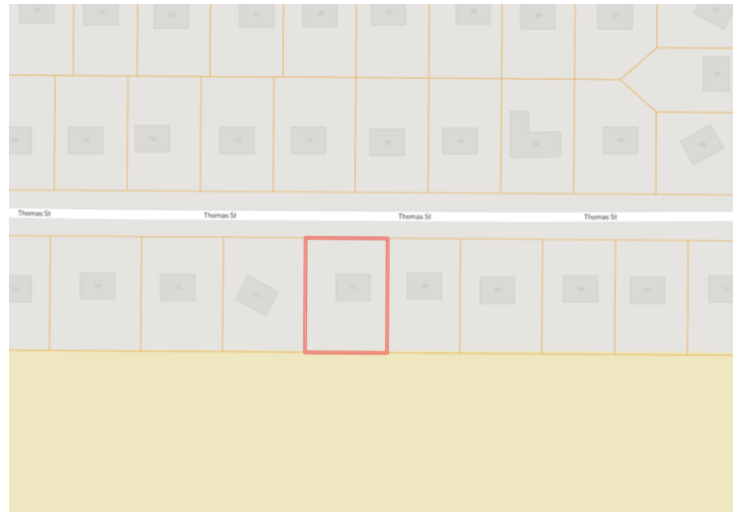


**A Real Estate Expert You Can Trust**  
TomSmithLandandHomes.com

Information is believed to be accurate but not guaranteed.







**Address: 111 Thomas Street Cleveland, MS 38732**

**Directions from Hwy 8 & Hwy 61 in Cleveland, MS:** Travel west on E. Sunflower Road for 1.3 miles. Turn left onto W. Sunflower Road and travel 0.2 miles. Turn left onto Canal Avenue and travel 0.2 miles. Turn left onto Thomas Street. After 407 feet, the home will be on the right. [Click for Google Maps.](#)



**TRACEY  
BELL**

MANAGING BROKER

Office: 662.441.2500

Cell: 662.719.4720

[Tracey@TomSmithLand.com](mailto:Tracey@TomSmithLand.com)



Expect More. Get More.

**A Real Estate Expert You Can Trust**

[TomSmithLandandHomes.com](http://TomSmithLandandHomes.com)

Information is believed to be accurate but not guaranteed.

