

Recreational Property 32+/- Acres in Copiah County MS

[Walkthrough Video 1](#)

[Walkthrough Video 2](#)



2056 Parrett Road
Hazlehurst, MS 39083

\$225,000

If you are looking for a great turnkey recreational property, you have found it in this 32+/- acre tract just minutes outside Hazlehurst, MS, in Copiah County. This fantastic property comes complete with everything you will need to start enjoying the outdoors. An internal road system gives you full access to all parts of the property, which means you will have plenty of stand sites to choose from while you chase those big old Copiah County whitetails. A year-round creek at the back of the property provides plenty of water for wildlife, while the hardwoods offer plenty of acorns for the deer and squirrels. The thick pines provide ample cover for wildlife, and the open areas offer food plots as well as natural forage. Apple, plum, sawtooth oak, and multiple other species of oak and fruit trees have been planted, making this property even more attractive to wildlife in the future. A tractor with bush hog, box blade, tiller, and seeder makes managing your new property a breeze. The camp gives you all you need for enjoyment and relaxation, with great views from the front porch. The full kitchen, sitting area, and bath complete a great camp house. A carport provides cover for all your equipment and an excellent location for outdoor cooking or just sitting back and watching the sunset behind the trees.

[GOOGLE MAP LINK](#)

**CLIF
CANNON**

MANAGING BROKER

Office: 601.990.5070

Cell: 601.565.1070

Clif@TomSmithLand.com



Expect More. Get More.

A Real Estate Expert You Can Trust

TomSmithLandandHomes.com

Information is believed to be accurate but not guaranteed.





A Real Estate Expert You Can Trust!

CLIF CANNON

MANAGING BROKER

O: 601.990.5070 C: 601.565.1070

Clif@TomSmithLand.com

TomSmithLandandHomes.com



Expect More. Get More.



Information is believed to be accurate but not guaranteed.



A Real Estate Expert *You Can Trust!*

CLIF CANNON

MANAGING BROKER

O: 601.990.5070 C: 601.565.1070

Clif@TomSmithLand.com

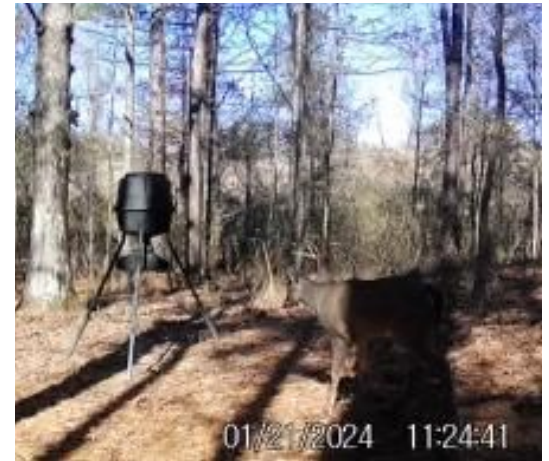
TomSmithLandandHomes.com



Expect More. Get More.



Information is believed to be accurate but not guaranteed.



A Real Estate Expert You Can Trust!

CLIF CANNON

MANAGING BROKER

O: 601.990.5070 C: 601.565.1070

Clif@TomSmithLand.com

TomSmithLandandHomes.com

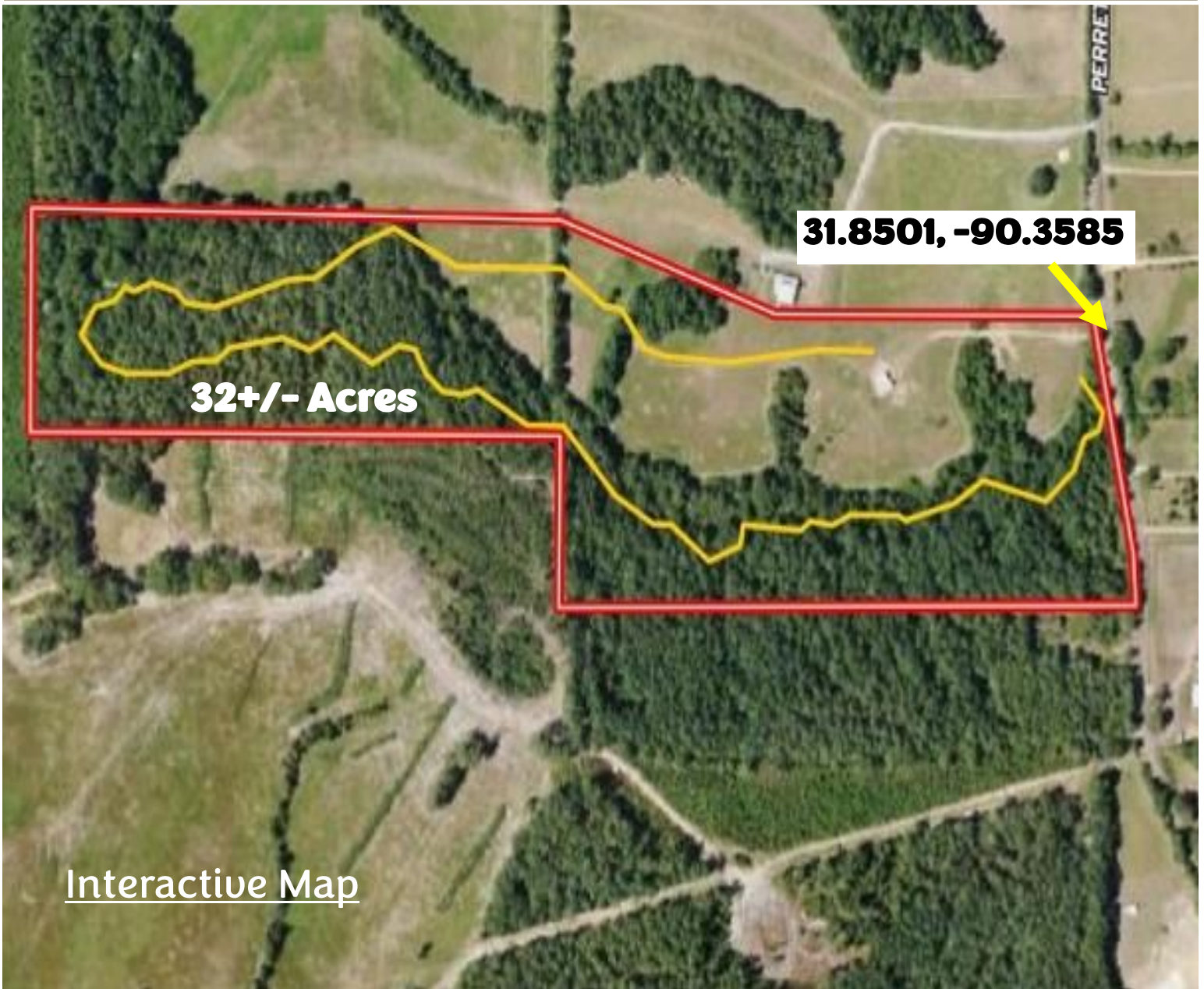


Expect More. Get More.



Information is believed to be accurate but not guaranteed.

Aerial Map



[Interactive Map](#)

A Real Estate Expert
You Can Trust!

CLIF CANNON

MANAGING BROKER

O: 601.990.5070 C: 601.565.1070

Clif@TomSmithLand.com

TomSmithLandandHomes.com

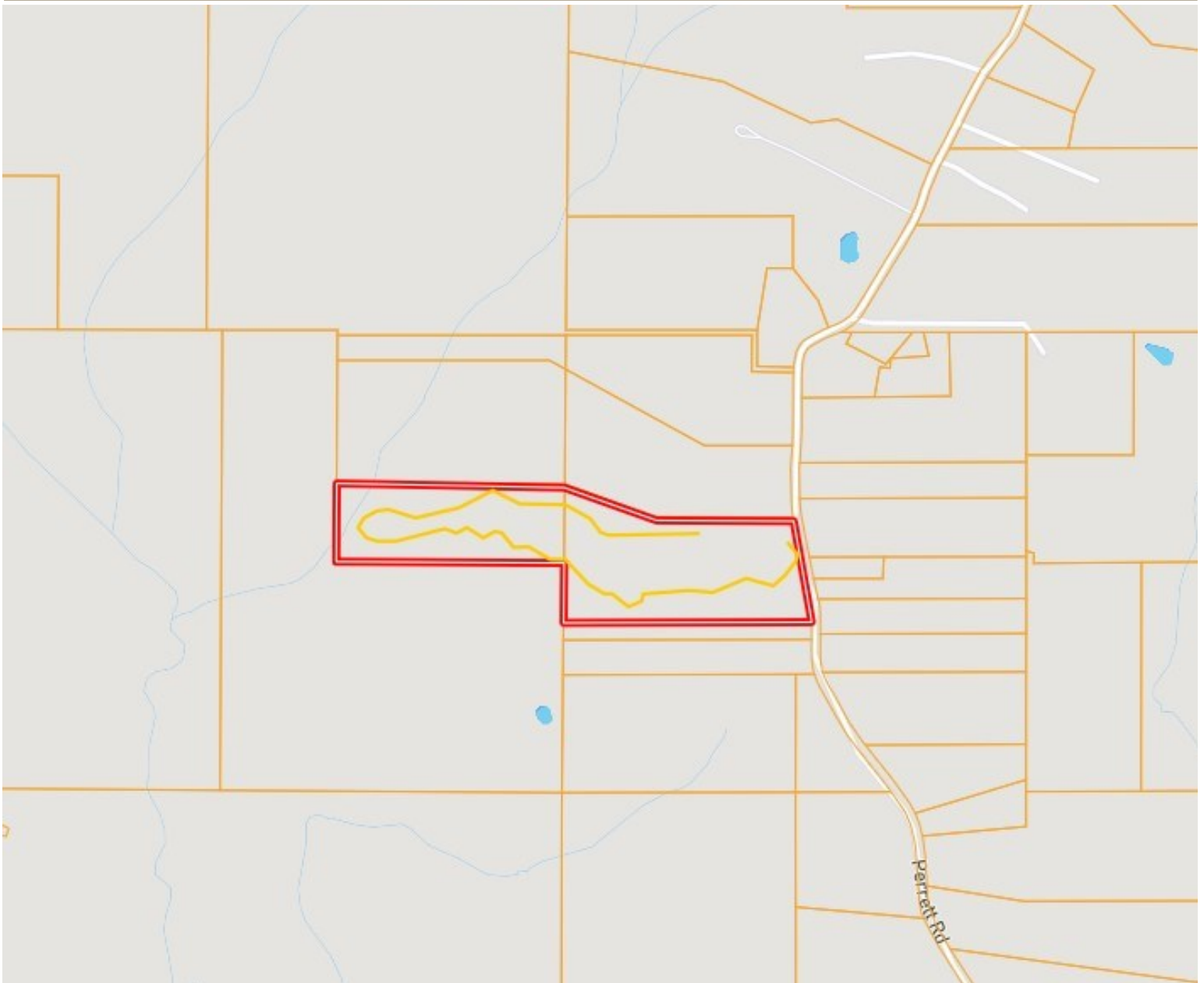


Expect More. Get More.



Information is believed to be accurate but not guaranteed.

Ownership Map



A Real Estate Expert
You Can Trust!

CLIF CANNON

MANAGING BROKER

O: 601.990.5070 C: 601.565.1070

Clif@TomSmithLand.com

TomSmithLandandHomes.com

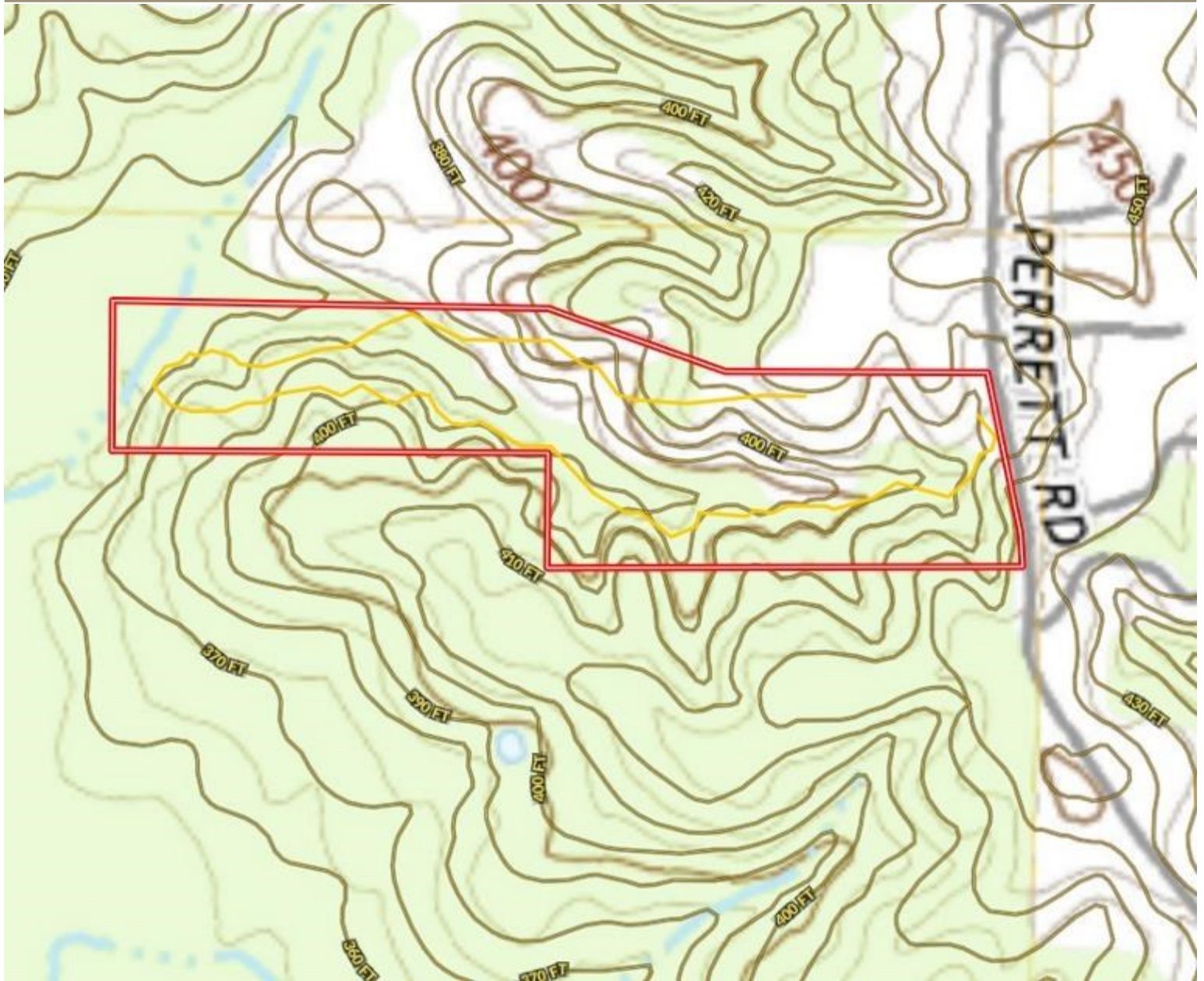


Expect More. Get More.



Information is believed to be accurate but not guaranteed.

Topographic Map



A Real Estate Expert
You Can Trust!

CLIF CANNON

MANAGING BROKER

O: 601.990.5070 C: 601.565.1070

Clif@TomSmithLand.com

TomSmithLandandHomes.com

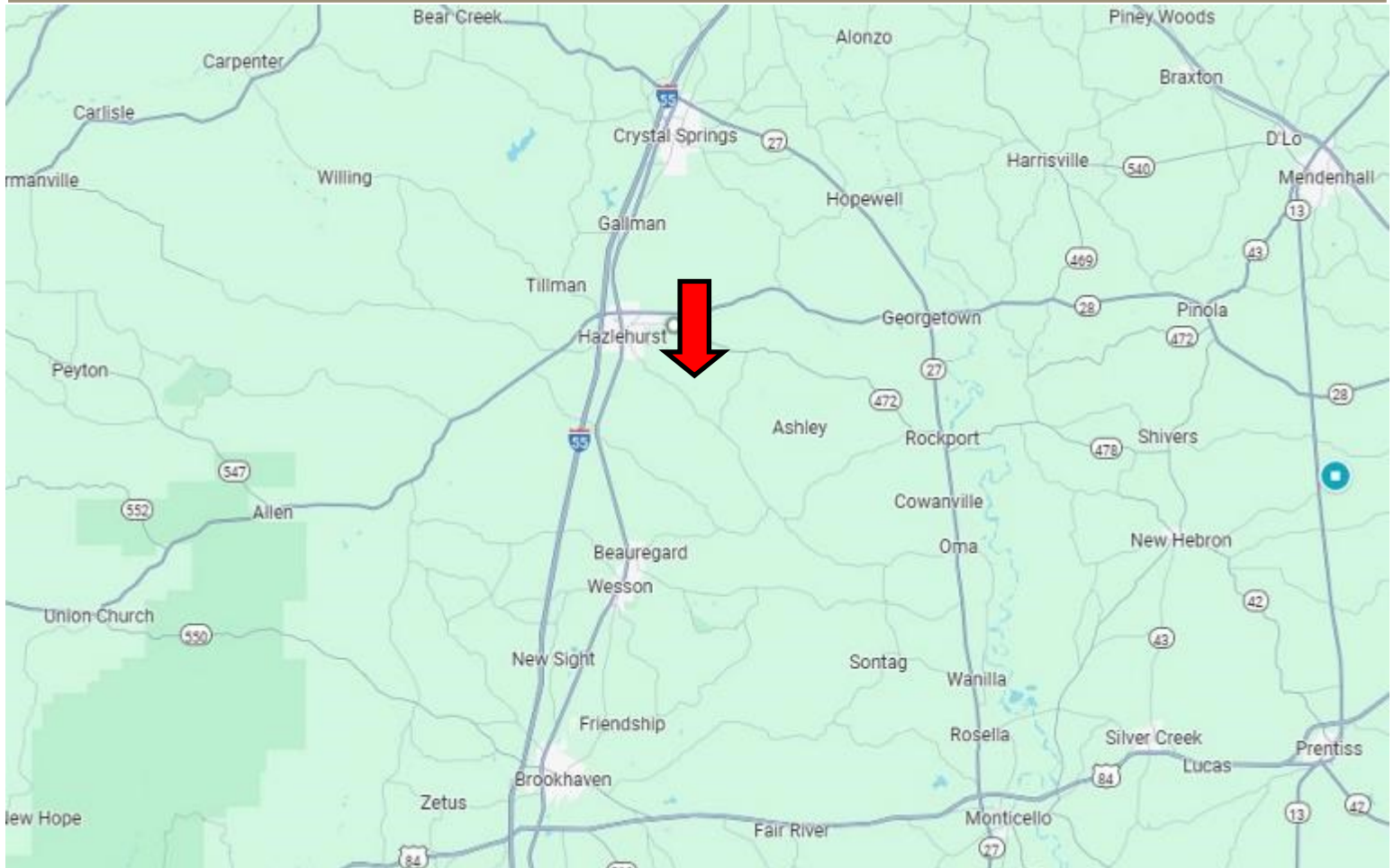


Expect More. Get More.



Information is believed to be accurate but not guaranteed.

Directional Map



Directions from the intersection of I-55 and MS-28 in Hazlehurst, MS: Take exit 61 and travel east on MS-28 for 2.7 miles. Turn right onto Tanner St and travel .1 miles. Turn left onto Georgetown St. and travel .8 miles. Turn left onto E. Whitworth St. and travel 253 feet. Turn right onto Perrett Road and travel 1.3 miles. The property will be on the right. (use 3048 Parrett Road in Google maps) [GOOGLE MAP LINK](#)



**CLIF
CANNON**
MANAGING BROKER
Office: 601.990.5070
Cell: 601.565.1070
Clif@TomSmithLand.com



Expect More. Get More.

A Real Estate Expert You Can Trust

TomSmithLandandHomes.com

Information is believed to be accurate but not guaranteed.

