

# RECREATIONAL HUNTING TRACT

53.2± Acres in Simpson County, MS



**\$292,600**

Located in the heart of Simpson County, this 53.2± acre spread is ideal for avid hunters or those looking to settle down amid the wilderness. Just a stone's throw from US-49, this property offers both convenience and a gateway to the great outdoors. The property features mature 18-year-old pines and a small pond, setting the scene for both beauty and practicality. Located next to Indian Creek and Strong River, hotspots for trophy deer and turkey hunting make this tract a prime location for those who live for the thrill of the hunt. Notably, about 20 acres of this land is outside the flood zone, providing a solid, high-ground spot perfect for building that sturdy cabin or setting up your permanent homestead. It's a rare setup in these parts, giving you less to worry about and more to enjoy. Whether you're aiming to bag the next big buck, seeking a secluded spot for outdoor adventures, or ready to build a home where the wild calls, this property in Simpson County hits the mark. Call David to schedule your tour today!



**DAVID  
BELDEN**  
REALTOR®

Office: 601.898.2772

Cell: 601.415.3884

DBelden@TomSmithLand.com



Expect More. Get More.

**A Real Estate Expert You Can Trust**

TomSmithLandandHomes.com

Information is believed to be accurate but not guaranteed.





## A Real Estate Expert *You Can Trust!*

**DAVID BELDEN**  
REALTOR®

O: 601.898.2772 C: 601.415.3884

DBelden@TomSmithLand.com

TomSmithLandandHomes.com

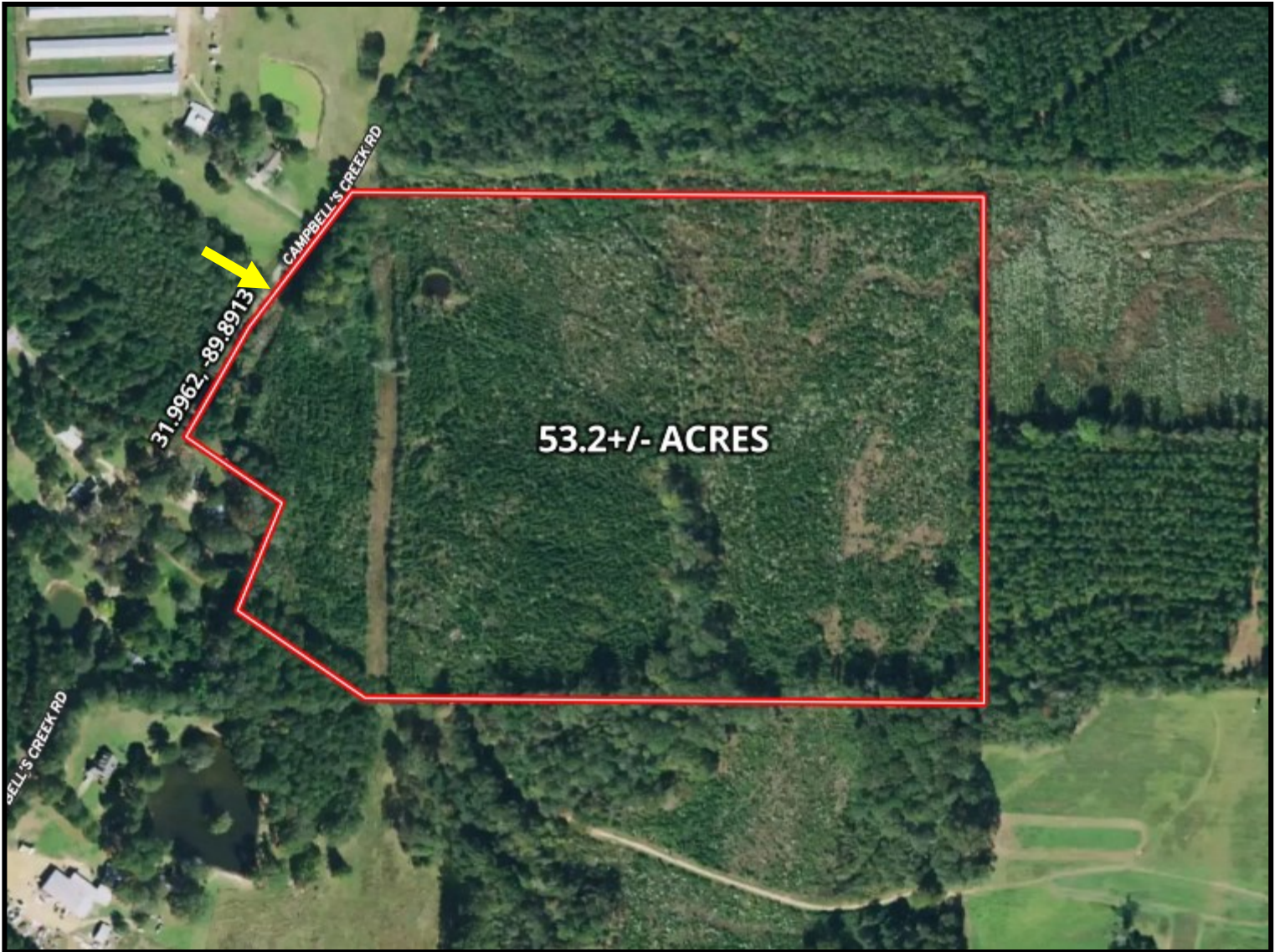


Expect More. Get More.



Information is believed to be accurate but not guaranteed.

# AERIAL MAP



[CLICK HERE FOR AN INTERACTIVE MAP](#)

**A Real Estate Expert**  
*You Can Trust!*

**DAVID BELDEN**  
REALTOR®

O: 601.898.2772 C: 601.415.3884

DBelden@TomSmithLand.com

TomSmithLandandHomes.com

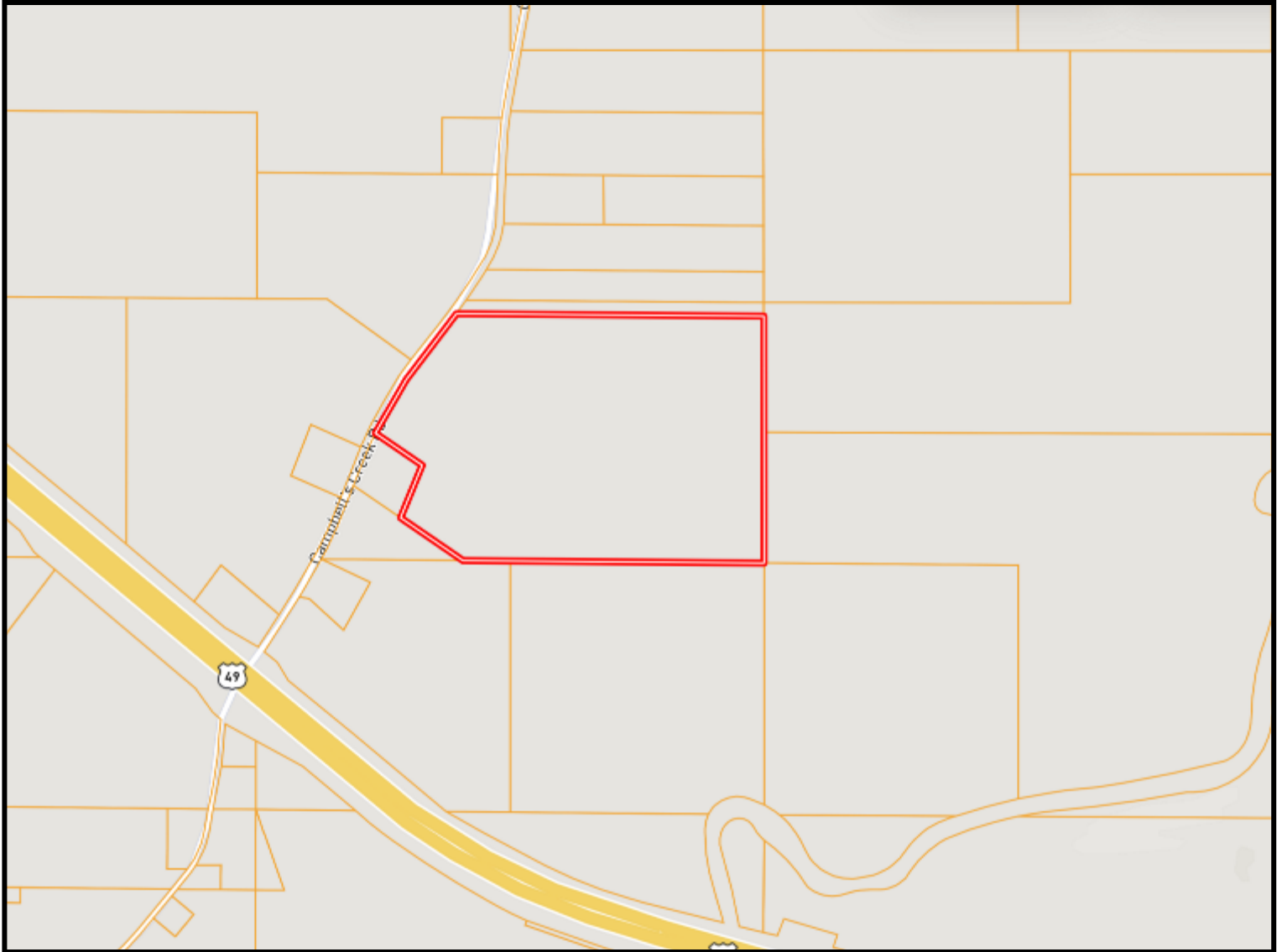


Expect More. Get More.



Information is believed to be accurate but not guaranteed.

# OWNERSHIP MAP



**A Real Estate Expert**  
*You Can Trust!*

**DAVID BELDEN**  
REALTOR®

O: 601.898.2772 C: 601.415.3884

DBelden@TomSmithLand.com

TomSmithLandandHomes.com

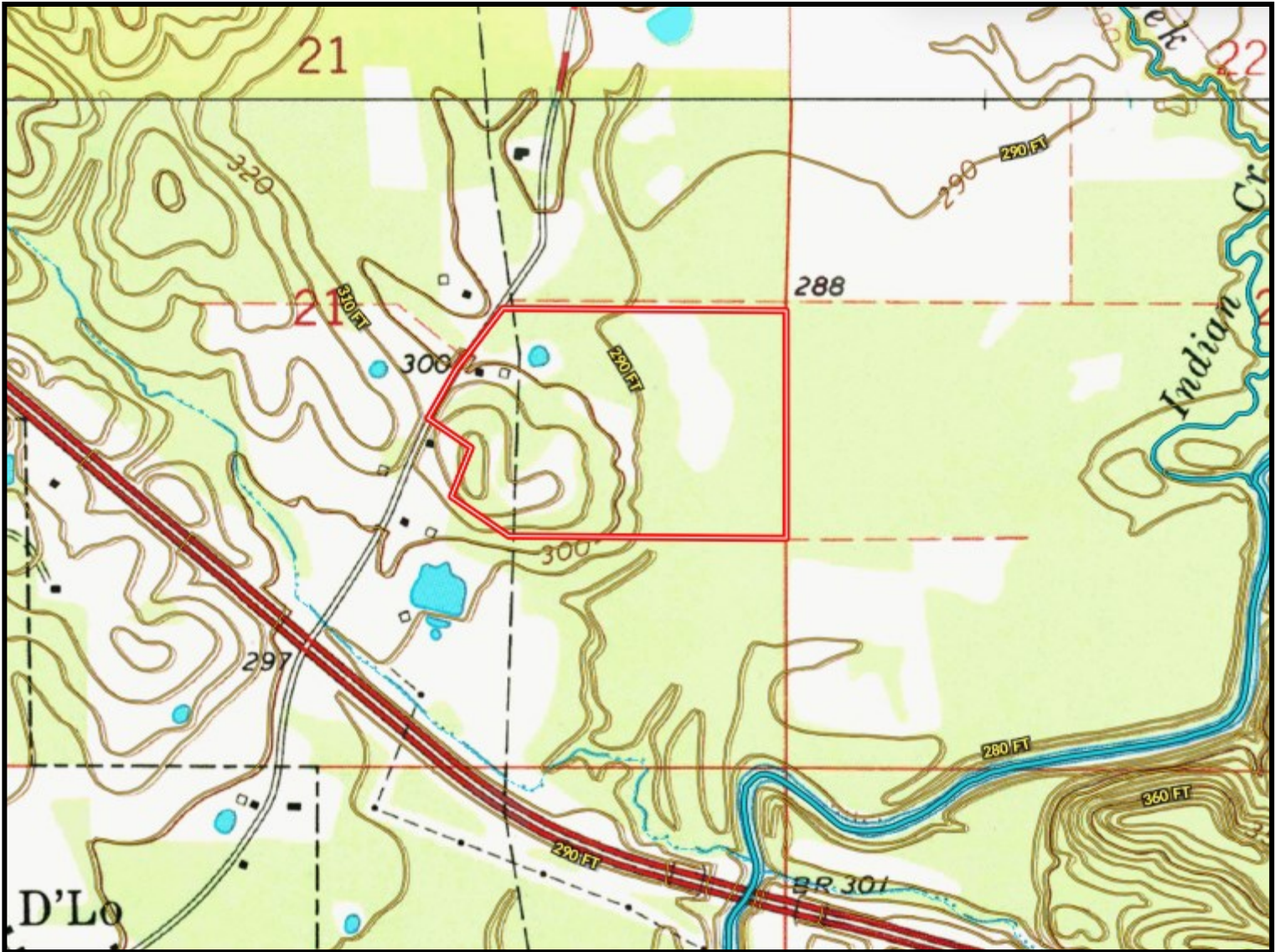


Expect More. Get More.



Information is believed to be accurate but not guaranteed.

# TOPOGRAPHY MAP



**A Real Estate Expert**  
*You Can Trust!*

**DAVID BELDEN**  
REALTOR®

O: 601.898.2772 C: 601.415.3884  
DBelden@TomSmithLand.com  
TomSmithLandandHomes.com

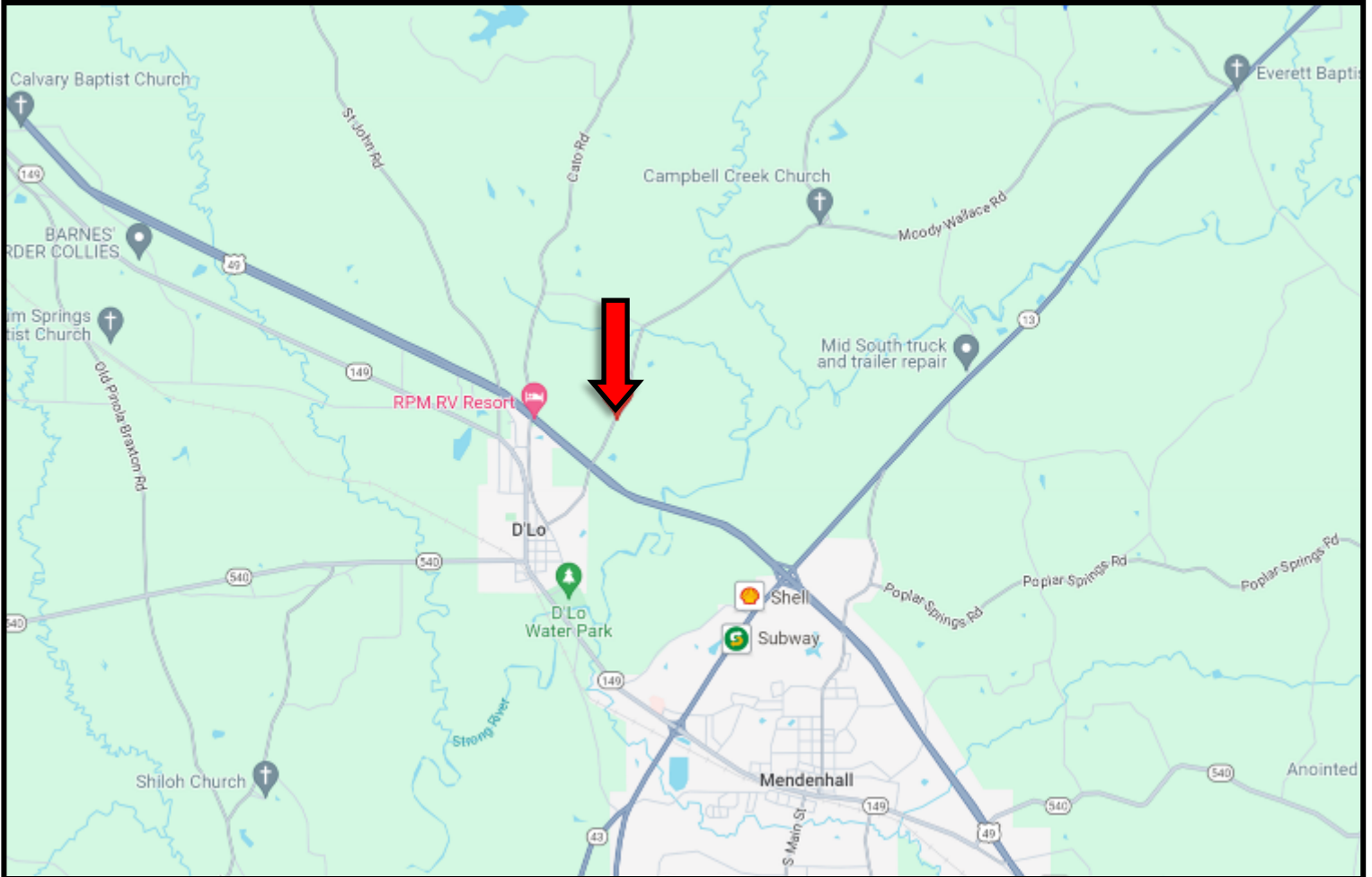


Expect More. Get More.



Information is believed to be accurate but not guaranteed.

# DIRECTIONAL MAP



**Directions from Hwy 49 and Hwy 13 in Mendenhall, MS: Travel Hwy 49 N for 1.5 miles. Turn right onto Campbell Creek Road. After .4 miles the property entrance will be on the right. [GOOGLE MAP LINK](#)**



**DAVID  
BELDEN**

REALTOR®

Office: 601.898.2772

Cell: 601.415.3884

DBelden@TomSmithLand.com



Expect More. Get More.

**A Real Estate Expert You Can Trust**

TomSmithLandandHomes.com

Information is believed to be accurate but not guaranteed.

