

# RECREATIONAL HUNTING TRACT

53.2 +/- Acres in Simpson County, MS



**\$279,000**

Located in the heart of Simpson County, this 53.2 +/- acre spread is ideal for avid hunters or those looking to settle down amid the wilderness. Just a stone's throw from US-49, this property offers both convenience and a gateway to the great outdoors. The property features mature 18-year-old pines and a small pond, setting the scene for both beauty and practicality. Located next to Indian Creek and Strong River, hotspots for trophy deer and turkey hunting make this tract a prime location for those who live for the thrill of the hunt. Notably, about 20 acres of this land is outside the flood zone, providing a solid, high-ground spot perfect for building that sturdy cabin or setting up your permanent homestead. It's a rare setup in these parts, giving you less to worry about and more to enjoy. Whether you're aiming to bag the next big buck, seeking a secluded spot for outdoor adventures, or ready to build a home where the wild calls, this property in Simpson County hits the mark. Call Dale or David to schedule your tour today!



**DALE WILDS**  
REALTOR®

O: 601.898.2772 | C: 662.715.7109  
Dale@TomSmithLand.com



Expect More. Get More.



**DAVID BELDEN**  
ALC®, REALTOR®

O: 601.898.2772 | C: 601.415.3884  
DBelden@TomSmithLand.com

**TomSmithLandandHomes.com**

Information is believed to be accurate but not guaranteed.





**DALE WILDS**  
REALTOR®

O: 601.898.2772 | C: 662.715.7109  
Dale@TomSmithLand.com



**DAVID BELDEN**  
ALC®, REALTOR®

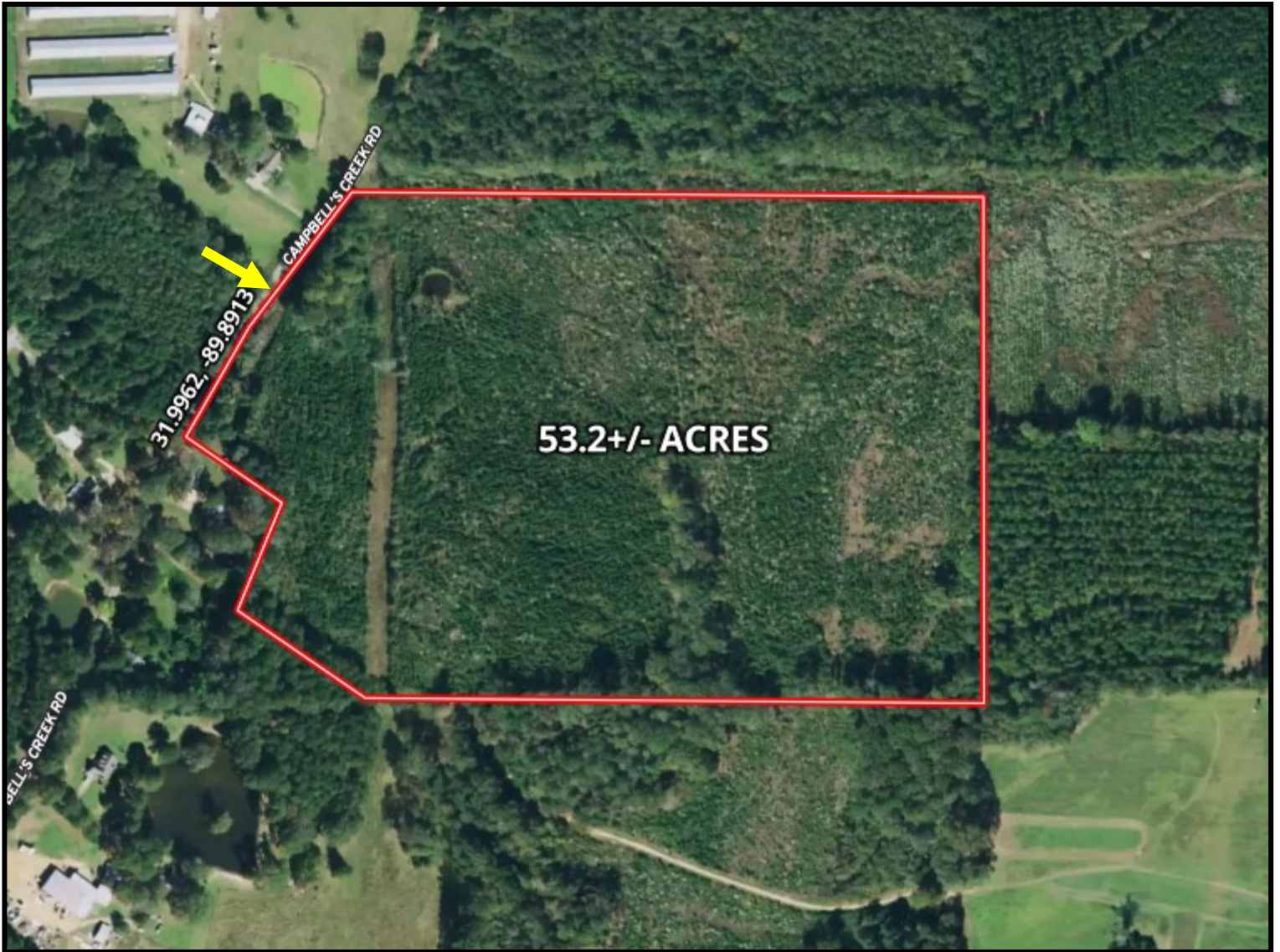
O: 601.898.2772 | C: 601.415.3884  
DBelden@TomSmithLand.com

**TomSmithLandandHomes.com**

Information is believed to be accurate but not guaranteed.



# AERIAL MAP



[CLICK HERE FOR AN INTERACTIVE MAP](#)

**DALE WILDS**  
REALTOR®

O: 601.898.2772 | C: 662.715.7109  
Dale@TomSmithLand.com



**DAVID BELDEN**  
ALC®, REALTOR®

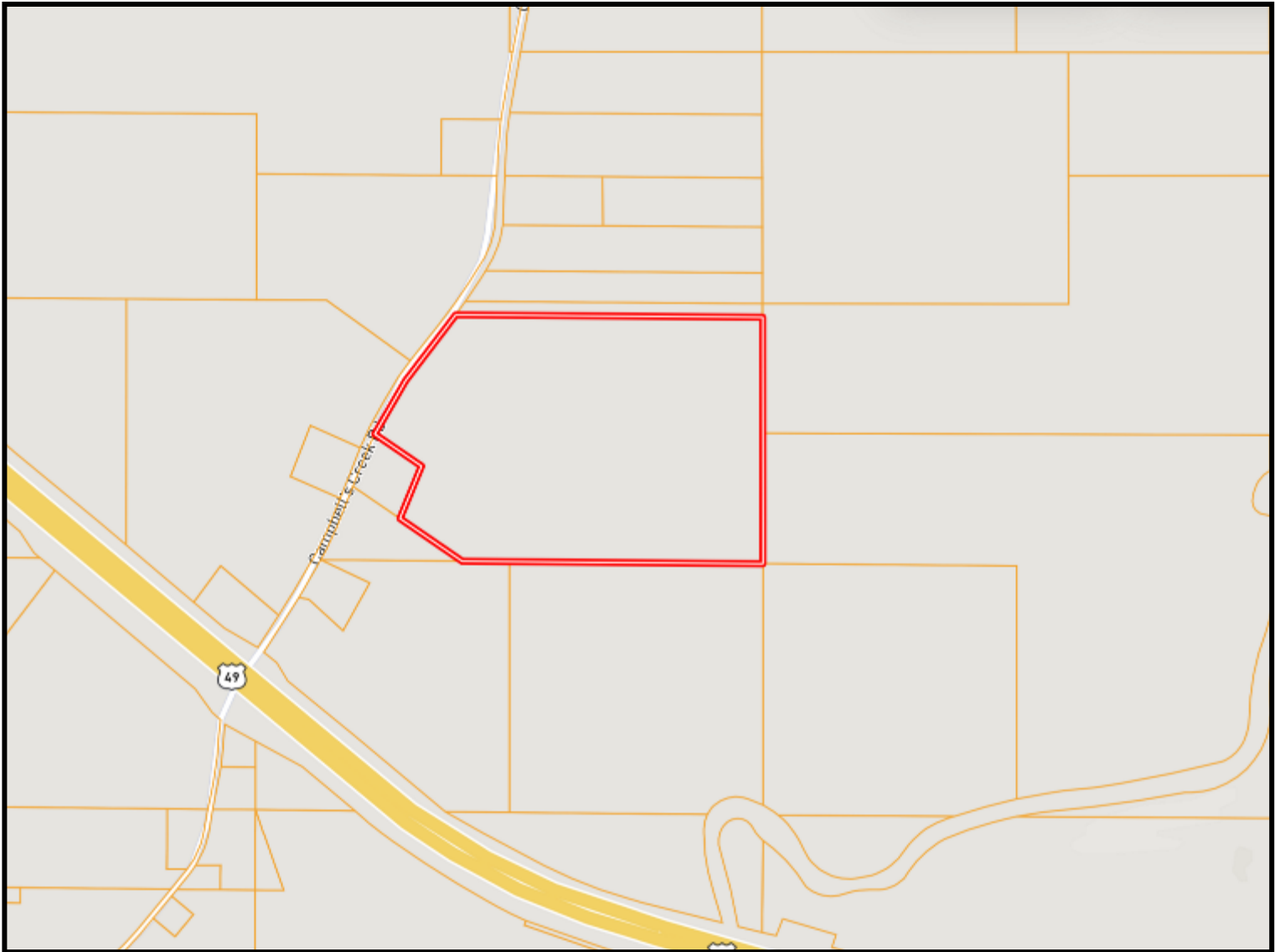
O: 601.898.2772 | C: 601.415.3884  
DBelden@TomSmithLand.com

[TomSmithLandandHomes.com](http://TomSmithLandandHomes.com)

Information is believed to be accurate but not guaranteed.



# OWNERSHIP MAP



**DALE WILDS**  
REALTOR®

O: 601.898.2772 | C: 662.715.7109  
Dale@TomSmithLand.com



**DAVID BELDEN**  
ALC®, REALTOR®

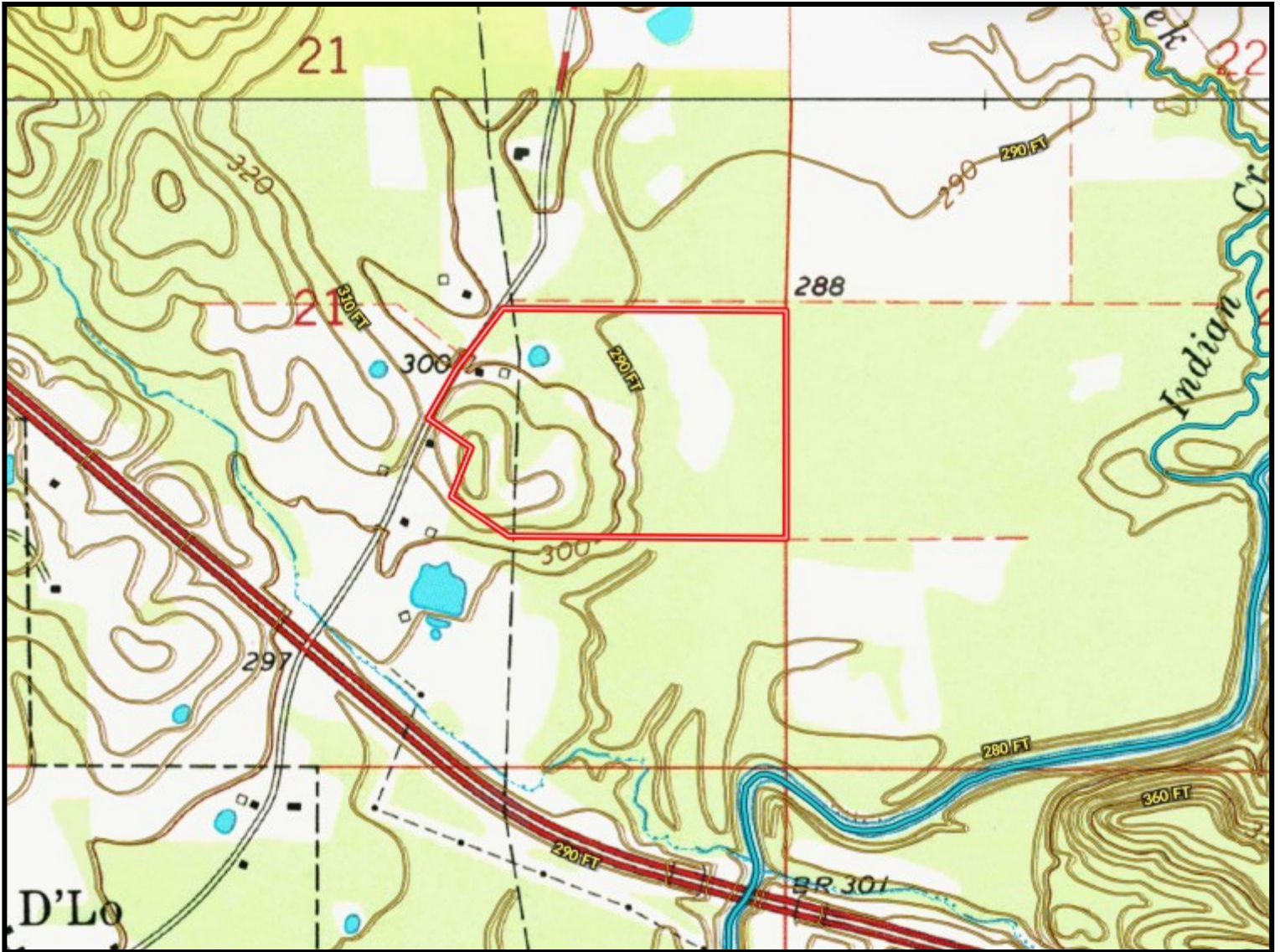
O: 601.898.2772 | C: 601.415.3884  
DBelden@TomSmithLand.com

**TomSmithLandandHomes.com**

Information is believed to be accurate but not guaranteed.



# TOPOGRAPHY MAP



**DALE WILDS**  
REALTOR®

O: 601.898.2772 | C: 662.715.7109  
Dale@TomSmithLand.com



**DAVID BELDEN**  
ALC®, REALTOR®

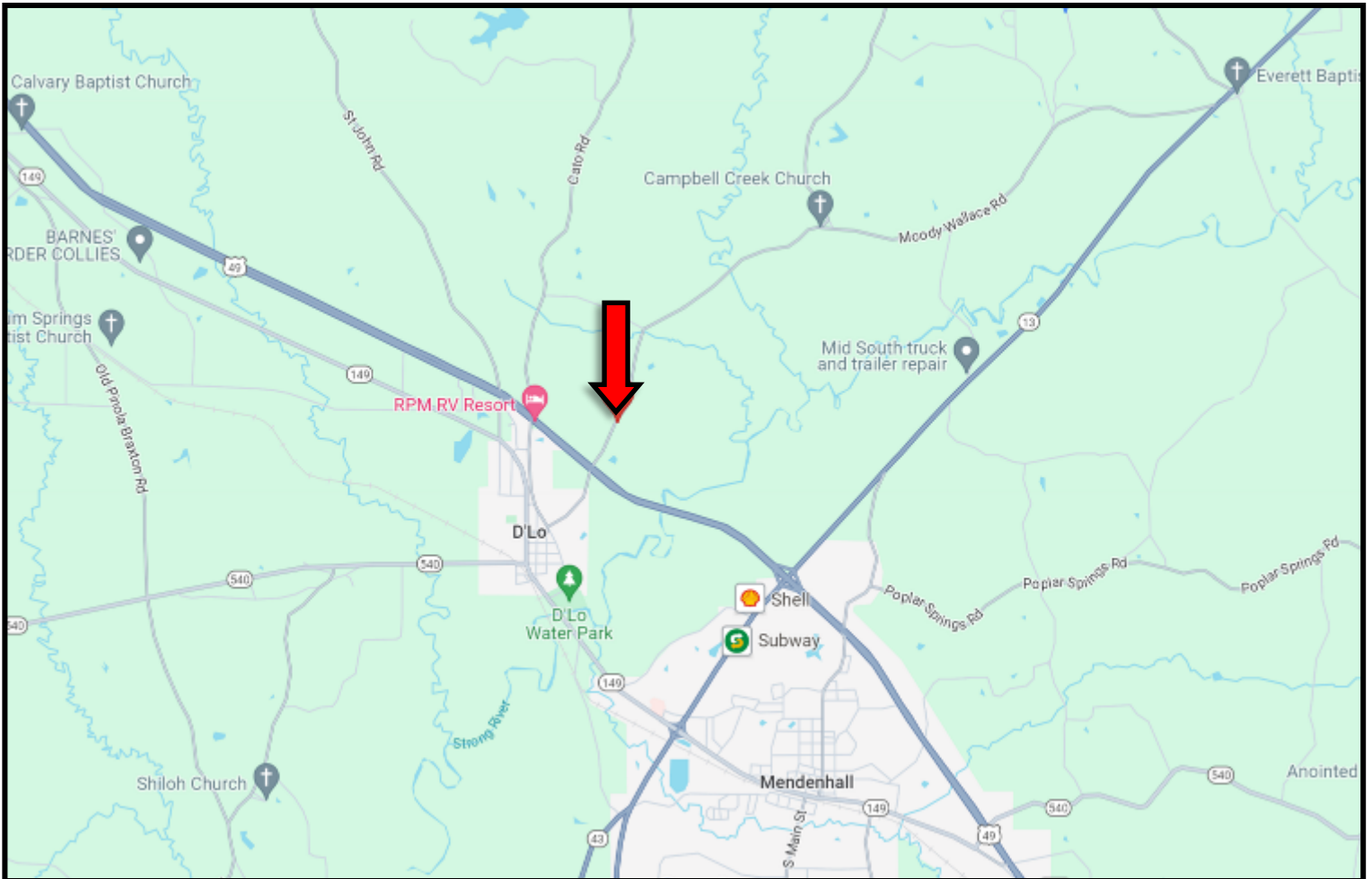
O: 601.898.2772 | C: 601.415.3884  
DBelden@TomSmithLand.com

**TomSmithLandandHomes.com**

Information is believed to be accurate but not guaranteed.



# DIRECTIONAL MAP



**Directions from Hwy 49 and Hwy 13 in Mendenhall, MS: Travel Hwy 49 N for 1.5 miles. Turn right onto Campbell Creek Road. After .4 miles the property entrance will be on the right. [GOOGLE MAP LINK](#)**



**DALE WILDS**  
REALTOR®

O: 601.898.2772 | C: 662.715.7109  
Dale@TomSmithLand.com



Expect More. Get More.



**DAVID BELDEN**  
ALC®, REALTOR®

O: 601.898.2772 | C: 601.415.3884  
DBelden@TomSmithLand.com

**TomSmithLandandHomes.com**

Information is believed to be accurate but not guaranteed.

