

802 Farmer Street, Cleveland, MS

\$85,000



This three-bedroom, two-bathroom, 1,708± SF home in Cleveland, Bolivar County, is valuable to your investment portfolio. Upon entry, you're greeted by a spacious foyer leading seamlessly into a formal dining room. The open-concept kitchen and living room area offer an inviting space for hosting friends and family, ensuring everyone feels connected. Each bedroom has ample closet space and a generously sized laundry room for added convenience. The spacious fenced backyard is ideal for your pets and outdoor entertaining. Contact Tracey Bell or Abby Aulds to arrange your private showing today!



TRACEY BELL
MANAGING BROKER

O: 661.441.2500 | C: 662.719.4720
Tracey@TomSmithLand.com



Expect More. Get More.



ABBY AULDS
REALTOR®

O: 662.441.2500 | C: 940.781.3137
Abby@TomSmithLand.com

TomSmithLandandHomes.com

Information is believed to be accurate but not guaranteed





TRACEY BELL
MANAGING BROKER

O: 662.441.2500 | C: 662.719.4720

Tracey@TomSmithLand.com



ABBY AULDS
REALTOR®

O: 662.441.2500 | C: 940.781.3137

Abby@TomSmithLand.com

TomSmithLandandHomes.com

Information is believed to be accurate but not guaranteed.





TRACEY BELL
MANAGING BROKER

O: 662.441.2500 | C: 662.719.4720

Tracey@TomSmithLand.com



ABBY AULDS
REALTOR®

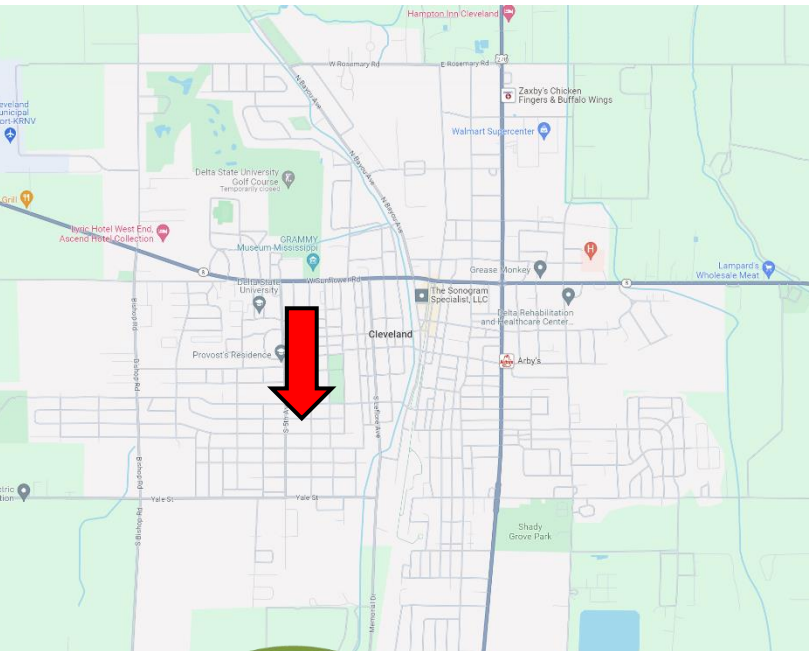
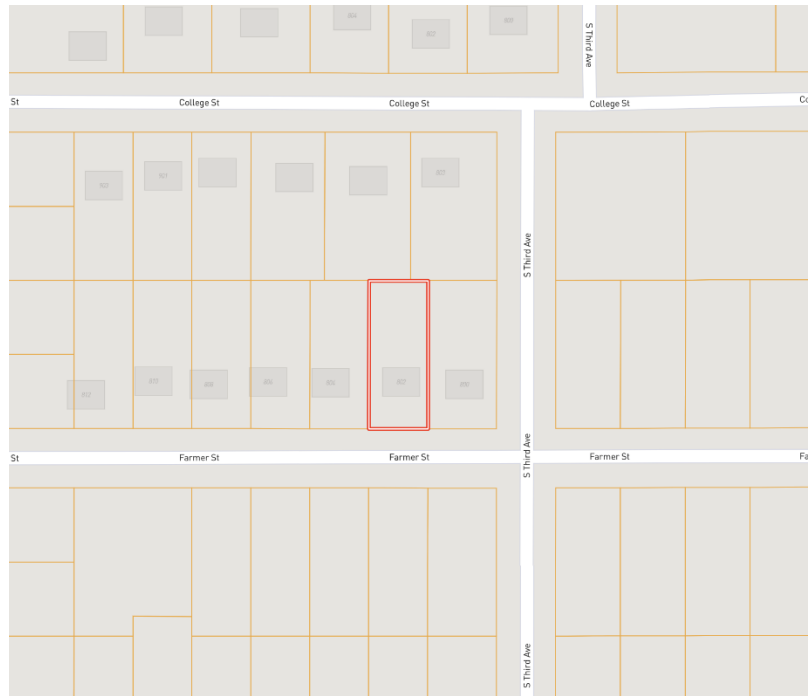
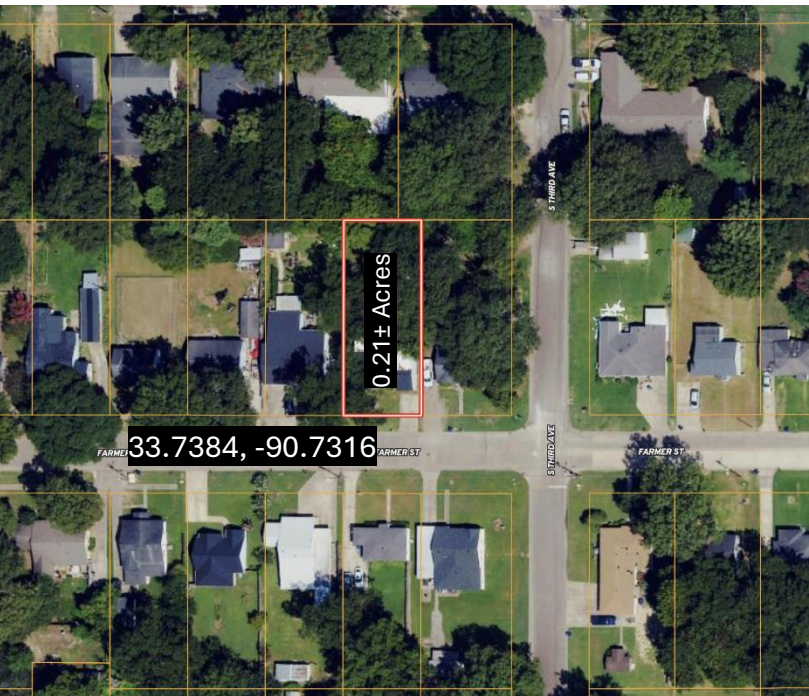
O: 662.441.2500 | C: 940.781.3137

Abby@TomSmithLand.com

TomSmithLandandHomes.com

Information is believed to be accurate but not guaranteed.





Address: 802 Farmer Street,
Cleveland, MS 338732

**Directions from Hwy 8 & Hwy 61 in
Cleveland, MS:** Travel west on Hwy 8 for
one mile. Turn left onto N. Fifth Avenue
and travel 0.6 miles. Turn left onto Farmer
Street. After 0.1 mile, the home will be on
the left. [Click for Google Maps.](#)



TRACEY BELL
MANAGING BROKER

O: 661.441.2500 | C: 662.719.4720
Tracey@TomSmithLand.com



Expect More. Get More.



ABBY AULDS
REALTOR®

O: 662.441.2500 | C: 940.781.3137
Abby@TomSmithLand.com