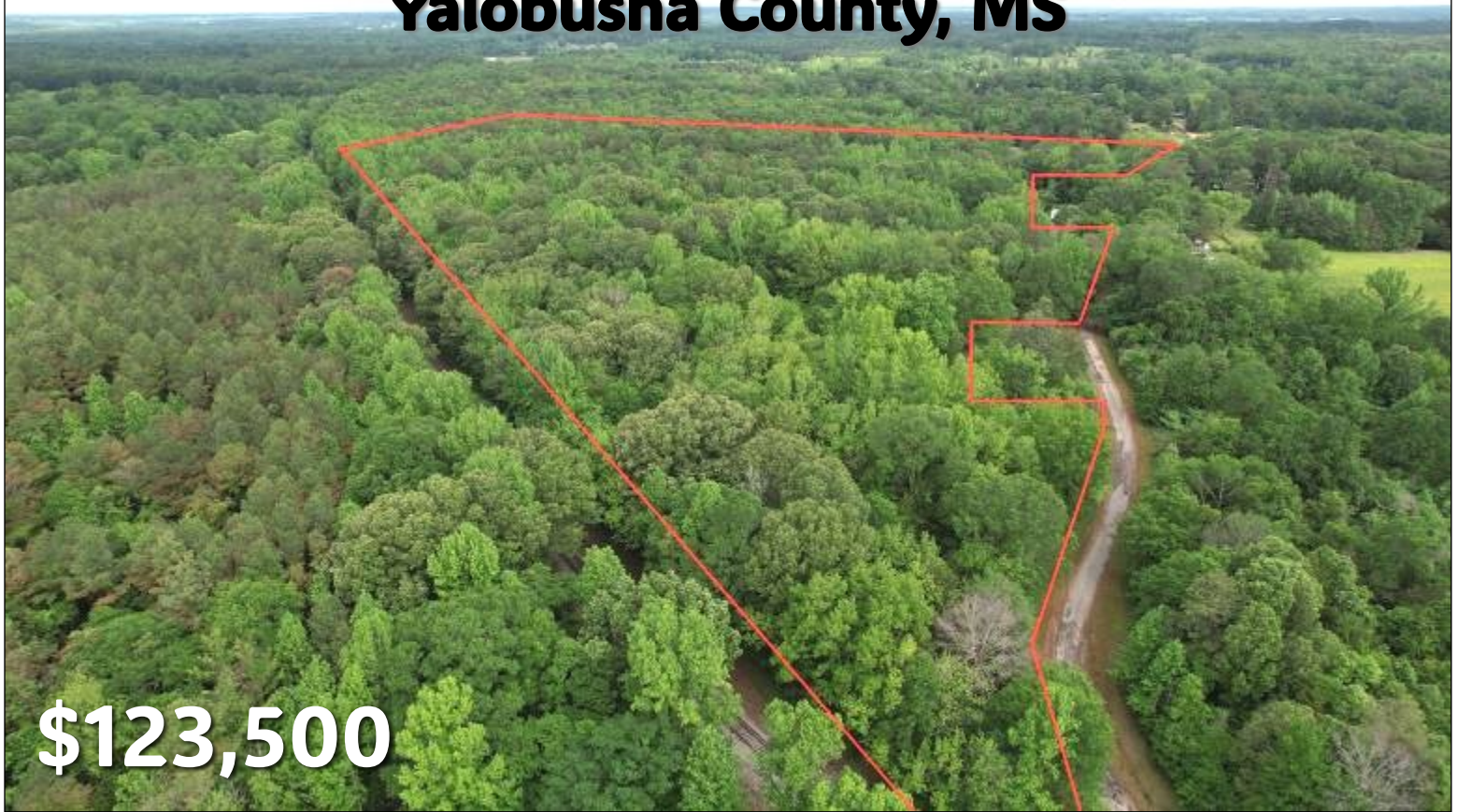


# 28± Acre Homesite/Hunting Tract Yalobusha County, MS



**\$123,500**

Here's your chance to have your piece of land that offers homesite potential, hunting, and a short drive to fish. Welcome to your new 28± acre tract in Yalobusha County, MS! It sits 15 miles north of Grenada, MS, 44 miles west of Oxford, MS, and 26 miles south of Batesville, MS. For the avid outdoorsman, with some TLC to the land you can set up camp, and enjoy the luxury of hunting the land or fishing on Grenada, Enid, or Sardis Lake(s). The primarily hardwood timber makeup will provide plenty of nutrition for the local wildlife. A small pond along the property's western boundary offers a water supply for the local wildlife as well. There's paved road frontage with power (Entergy) and water (Tillatoba) also available. Give Kadero Edley a call to schedule your private showing!



**KADERO  
EDLEY**  
REALTOR®

Office: 601.898.2772  
Cell: 601.488.7000

Kadero@TomSmithLand.com

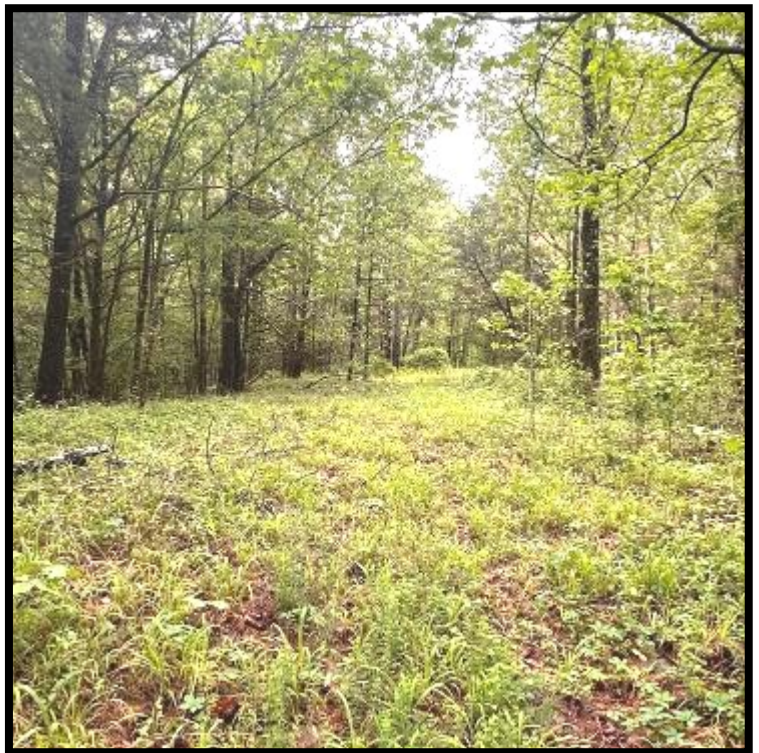


**A Real Estate Expert You Can Trust**

TomSmithLandandHomes.com

Information is believed to be accurate but not guaranteed.





**KADERO EDLEY**

REALTOR®

Office: 601.898.2772

Cell: 601.488.7000

Kadero@TomSmithLand.com



**A Real Estate Expert You Can Trust**

TomSmithLandandHomes.com

Information is believed to be accurate but not guaranteed.





**KADERO EDLEY**  
REALTOR®

Office: 601.898.2772

Cell: 601.488.7000

[Kadero@TomSmithLand.com](mailto:Kadero@TomSmithLand.com)



**A Real Estate Expert You Can Trust**  
[TomSmithLandandHomes.com](http://TomSmithLandandHomes.com)

Information is believed to be accurate but not guaranteed.



# Aerial Map



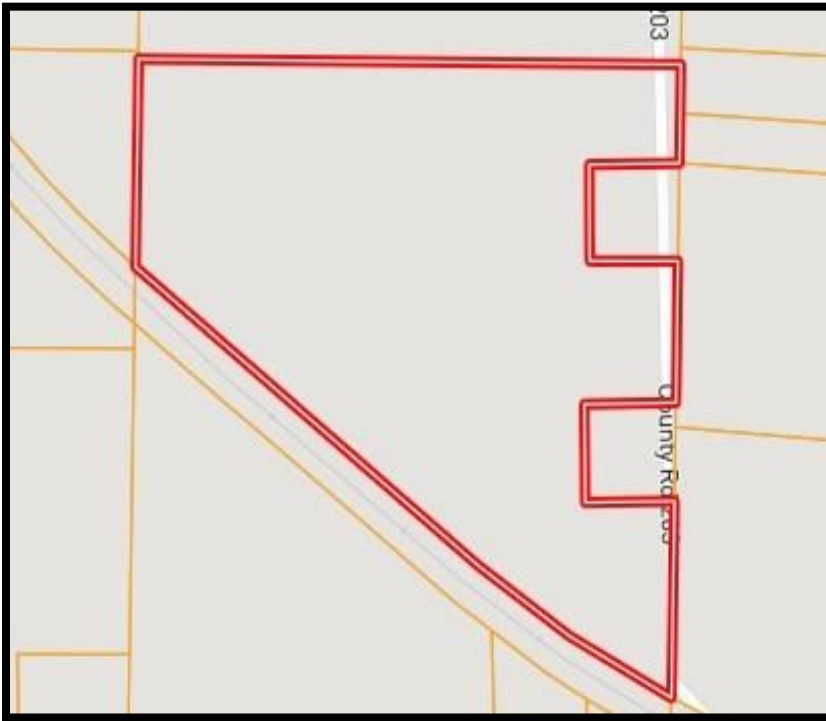
**KADERO EDLEY**  
REALTOR®  
Office: 601.898.2772  
Cell: 601.488.7000  
Kadero@TomSmithLand.com



A Real Estate Expert You Can Trust  
TomSmithLandandHomes.com

Information is believed to be accurate but not guaranteed.





# Ownership Map



# Topography Map

**KADERO EDLEY**  
REALTOR®

Office: 601.898.2772

Cell: 601.488.7000

Kadero@TomSmithLand.com

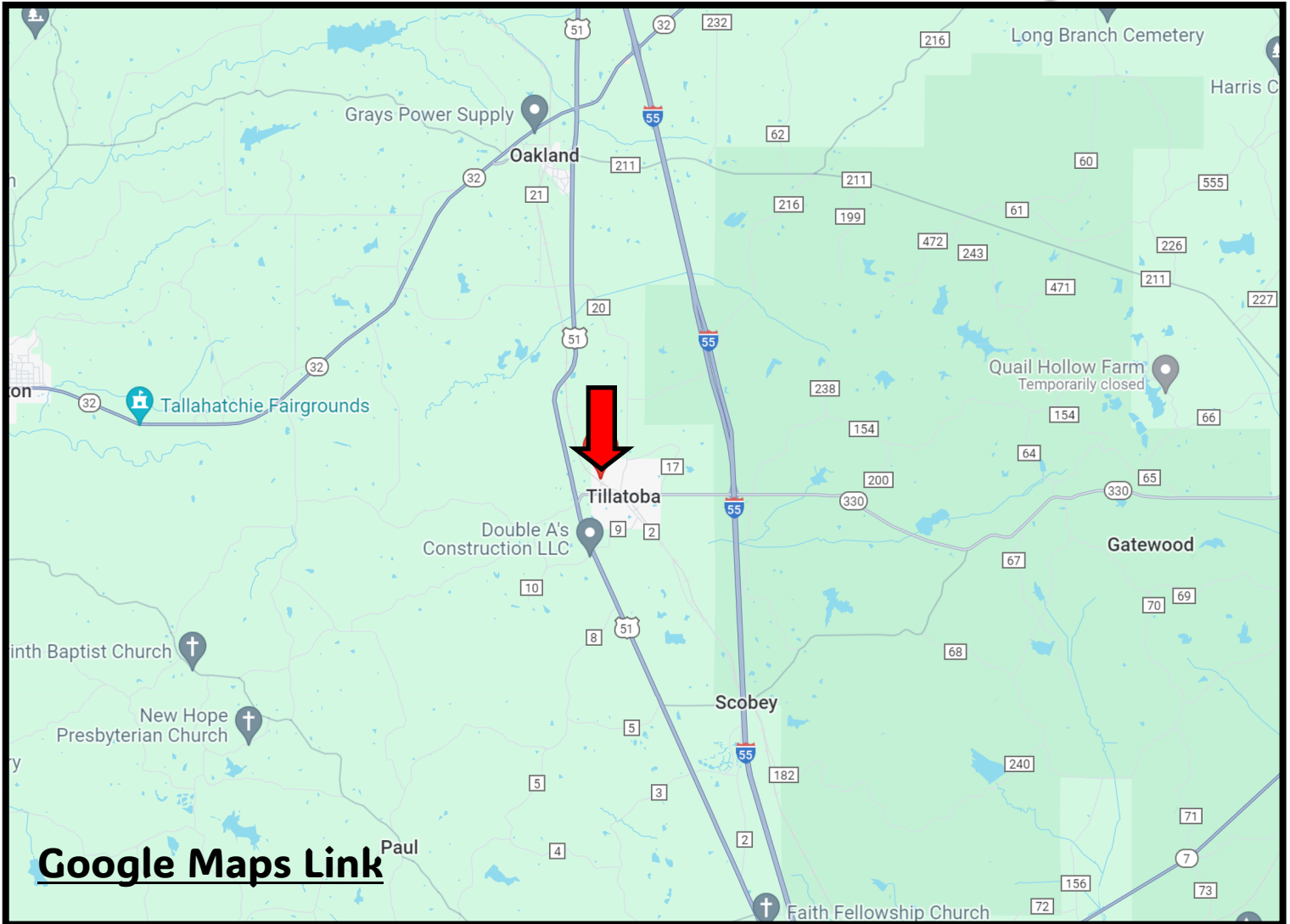


**A Real Estate Expert You Can Trust**  
TomSmithLandandHomes.com

Information is believed to be accurate but not guaranteed.



# Directional Map



[Google Maps Link](#)

**Directions from Hwy 55 N in Grenada, MS: Travel north on Hwy 55 for 8.6 miles. Take exit 220 east for MS-330 toward Tillatoba Rd. Turn left onto MS-330 and travel 1.6 miles. Turn right onto CR 203. After 0.5 miles, the property will be on your left.**



**KADERO  
EDLEY**

REALTOR®

Office: 601.898.2772

Cell: 601.488.7000

Kadero@TomSmithLand.com



**A Real Estate Expert You Can Trust**

TomSmithLandandHomes.com

Information is believed to be accurate but not guaranteed.

2011-2023  
BEST  
BROKERAGES