

RECREATIONAL TIMBERLAND TRACT

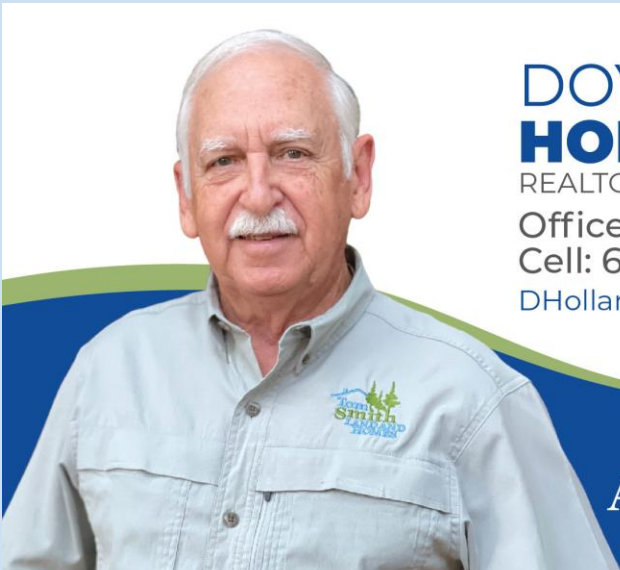
Surrounded by the Tombigbee National Forest
80± Acres in Choctaw County, MS



[Property Video](#) 

\$152,000

Own your private getaway surrounded by the expansive beauty of the 67,000± acre Tombigbee National Forest. This 80± acre property in Choctaw County, MS, is just a short 33-minute drive from Starkville and MSU. Nearby, the 100± acre Choctaw Lake is perfect for fishing and camping adventures. With ample opportunities for hunting and recreation right at your fingertips, every day brings new possibilities. Access is easy with a secure gated entrance along a well-maintained gravel road by the USFS. Contact Doyes today to schedule a personalized tour of this extraordinary property!



**DOYES
HOLLAND**
REALTOR®

Office: 662.268.6333

Cell: 662.312.2165

DHolland@TomSmithLand.com



Expect More. Get More.

A Real Estate Expert You Can Trust

TomSmithLandandHomes.com

Information is believed to be accurate but not guaranteed.



An aerial photograph of a dense forest. A blue line is drawn across the image, forming a large, irregular polygon that encloses a central area of forest. This area appears slightly more uniform in color (brownish-green) compared to the surrounding forest, which shows more variation in green and brown tones. Two small red dots are visible: one at the top-left vertex of the blue boundary and another further up and to the right, near the top edge of the boundary. The forest extends to the horizon under a clear sky.



DHolland@TomSmithLand.com



TomSmithLandandHomes.com

2011-2024
AMERICA'S
BEST
BROKERAGES



**DOYES
HOLLAND**
REALTOR®

Office: 662.268.6333

Cell: 662.312.2165

DHolland@TomSmithLand.com



Expect More. Get More.

A Real Estate Expert You Can Trust

TomSmithLandandHomes.com

Information is believed to be accurate but not guaranteed.





**DOYES
HOLLAND**
REALTOR®

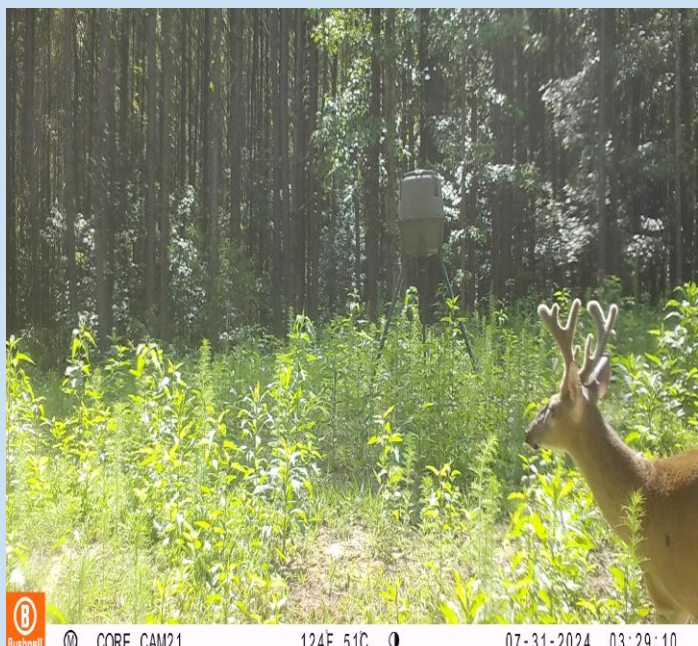
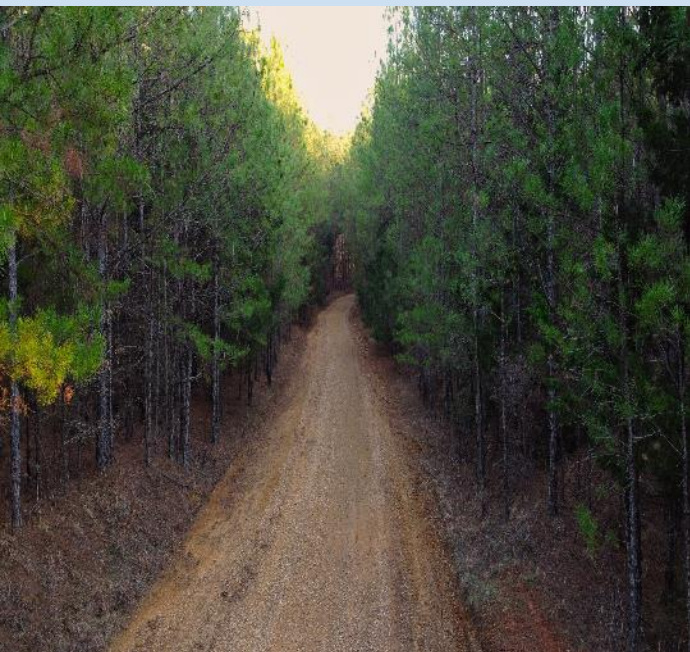
Office: 662.268.6333
Cell: 662.312.2165
DHolland@TomSmithLand.com



A Real Estate Expert You Can Trust
TomSmithLandandHomes.com

Information is believed to be accurate but not guaranteed.





**DOYES
HOLLAND**
REALTOR®

Office: 662.268.6333
Cell: 662.312.2165
DHolland@TomSmithLand.com



Expect More. Get More.

A Real Estate Expert You Can Trust

TomSmithLandandHomes.com

Information is believed to be accurate but not guaranteed.



AERIAL MAP



[CLICK HERE FOR THE LANDID INTERACTIVE MAP LINK](#)



**DOYES
HOLLAND**
REALTOR®

Office: 662.268.6333

Cell: 662.312.2165

DHolland@TomSmithLand.com



Expect More. Get More.

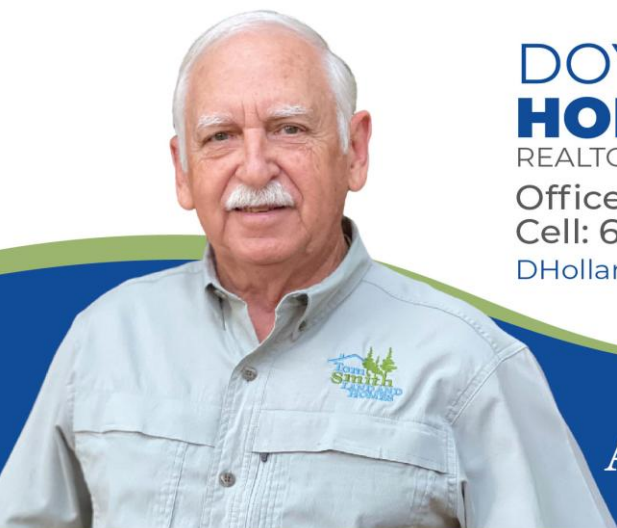
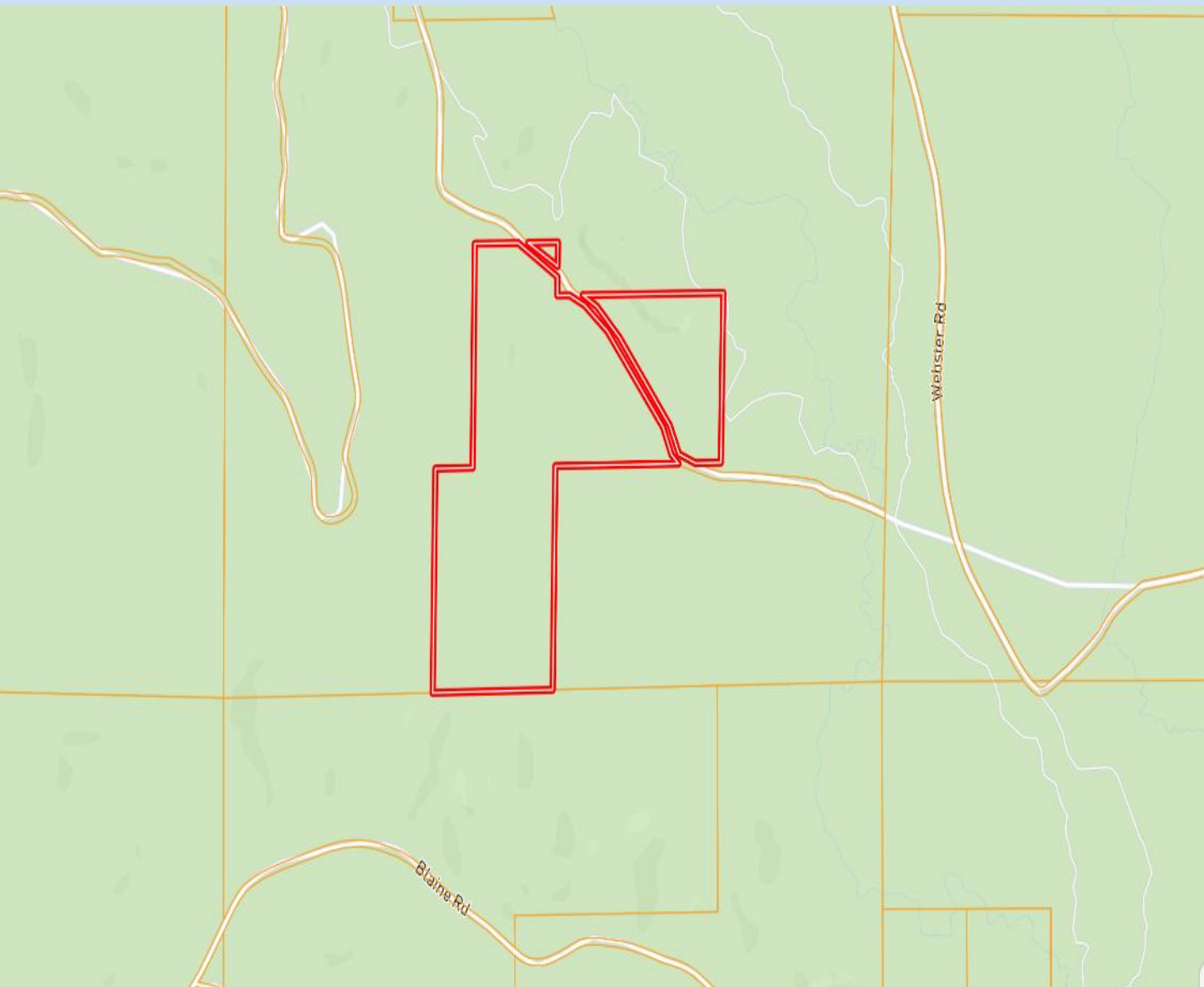
A Real Estate Expert You Can Trust

TomSmithLandandHomes.com

Information is believed to be accurate but not guaranteed.



OWNERSHIP MAP



**DOYES
HOLLAND**
REALTOR®

Office: 662.268.6333

Cell: 662.312.2165

DHolland@TomSmithLand.com



Expect More. Get More.

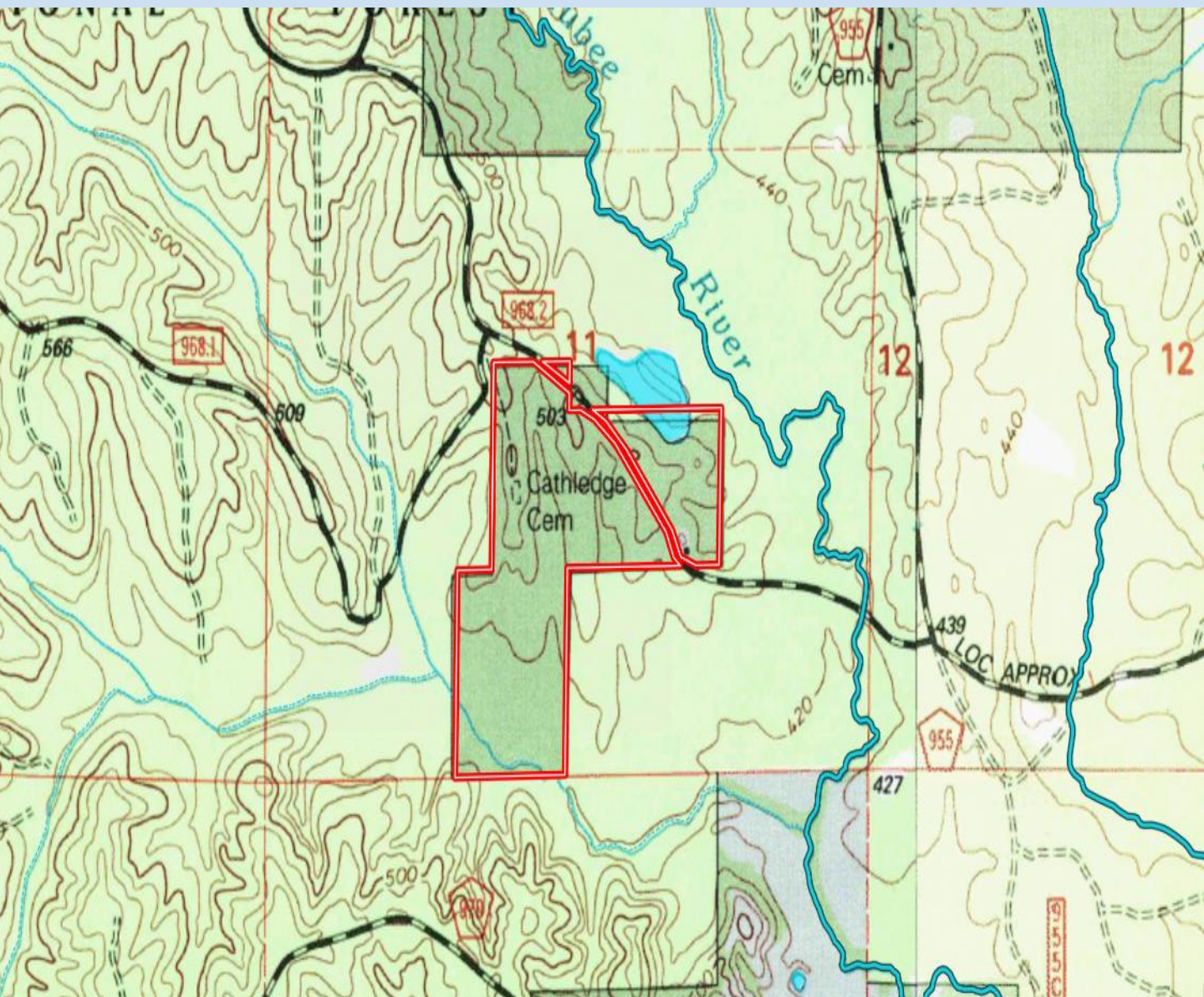
A Real Estate Expert You Can Trust

TomSmithLandandHomes.com

Information is believed to be accurate but not guaranteed.



TOPOGRAPHY MAP



**DOYES
HOLLAND**
REALTOR®

Office: 662.268.6333
Cell: 662.312.2165
DHolland@TomSmithLand.com



Expect More. Get More.

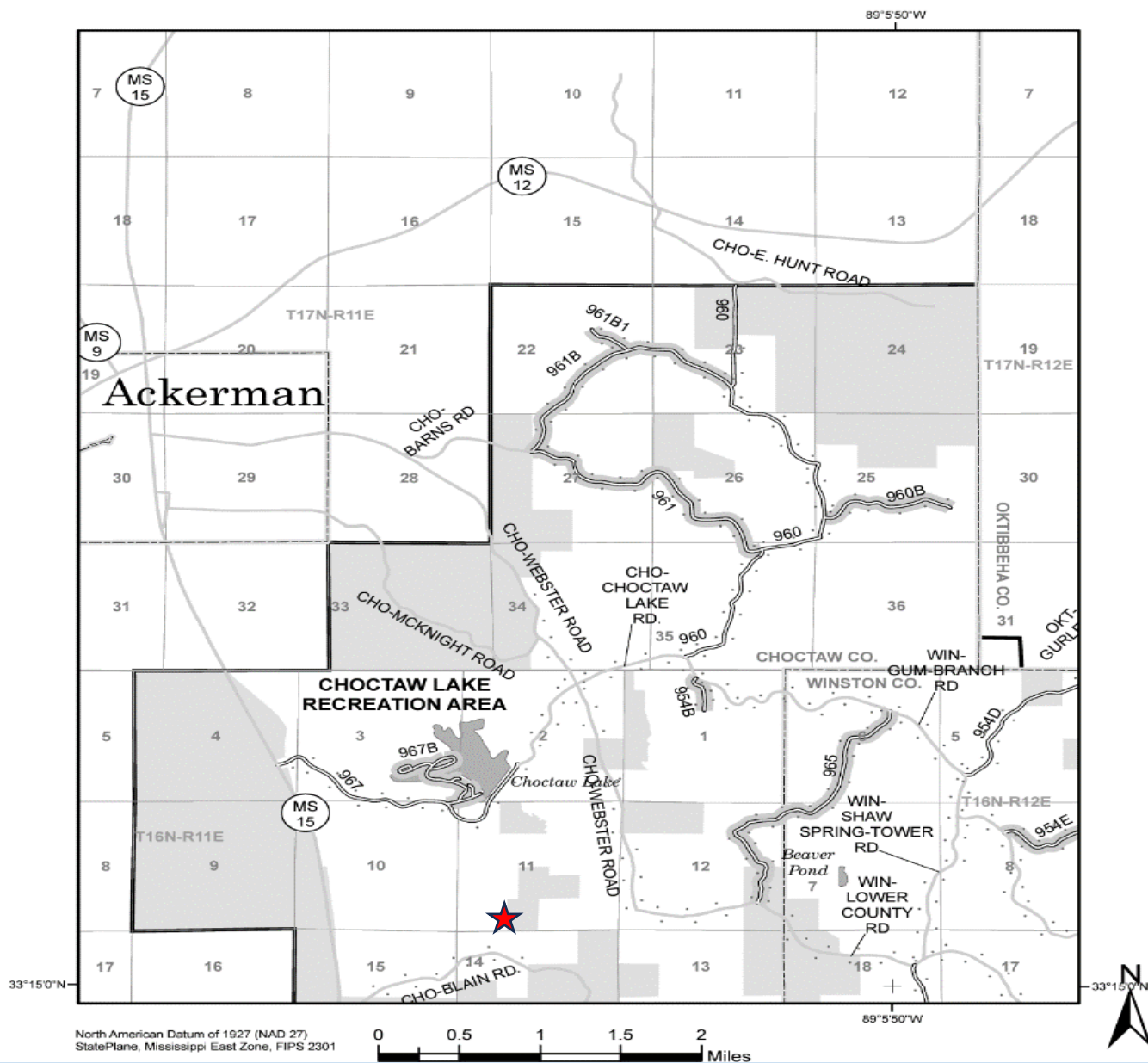
A Real Estate Expert You Can Trust

TomSmithLandandHomes.com

Information is believed to be accurate but not guaranteed.



FORESTRY VEHICLE USE MAP



**DOYES
HOLLAND**
REALTOR®

Office: 662.268.6333
Cell: 662.312.2165
DHolland@TomSmithLand.com



Expect More. Get More.

A Real Estate Expert You Can Trust

TomSmithLandandHomes.com

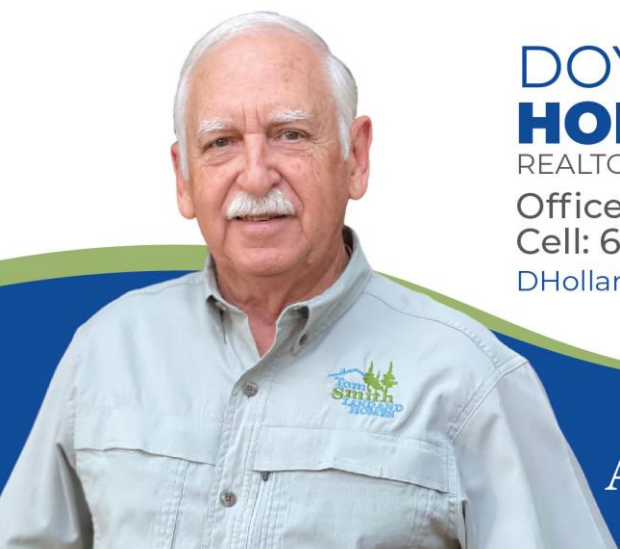
Information is believed to be accurate but not guaranteed.



SOIL MAP



SOIL CODE	SOIL DESCRIPTION	ACRES	%	CPI	NCCPI	CAP
OrC2	Ora loam, 5 to 8 percent slopes, eroded	36.52	46.12	0	32	3e
MP	Maben-Providence association, hilly	23.39	29.54	0	40	7e
Ce	Chenneby silt loam, occasionally flooded	18.23	23.02	0	77	2w
W	Water	1.05	1.33	0	-	-



DOYES
HOLLAND
REALTOR®

Office: 662.268.6333
Cell: 662.312.2165
DHolland@TomSmithLand.com



Expect More. Get More.

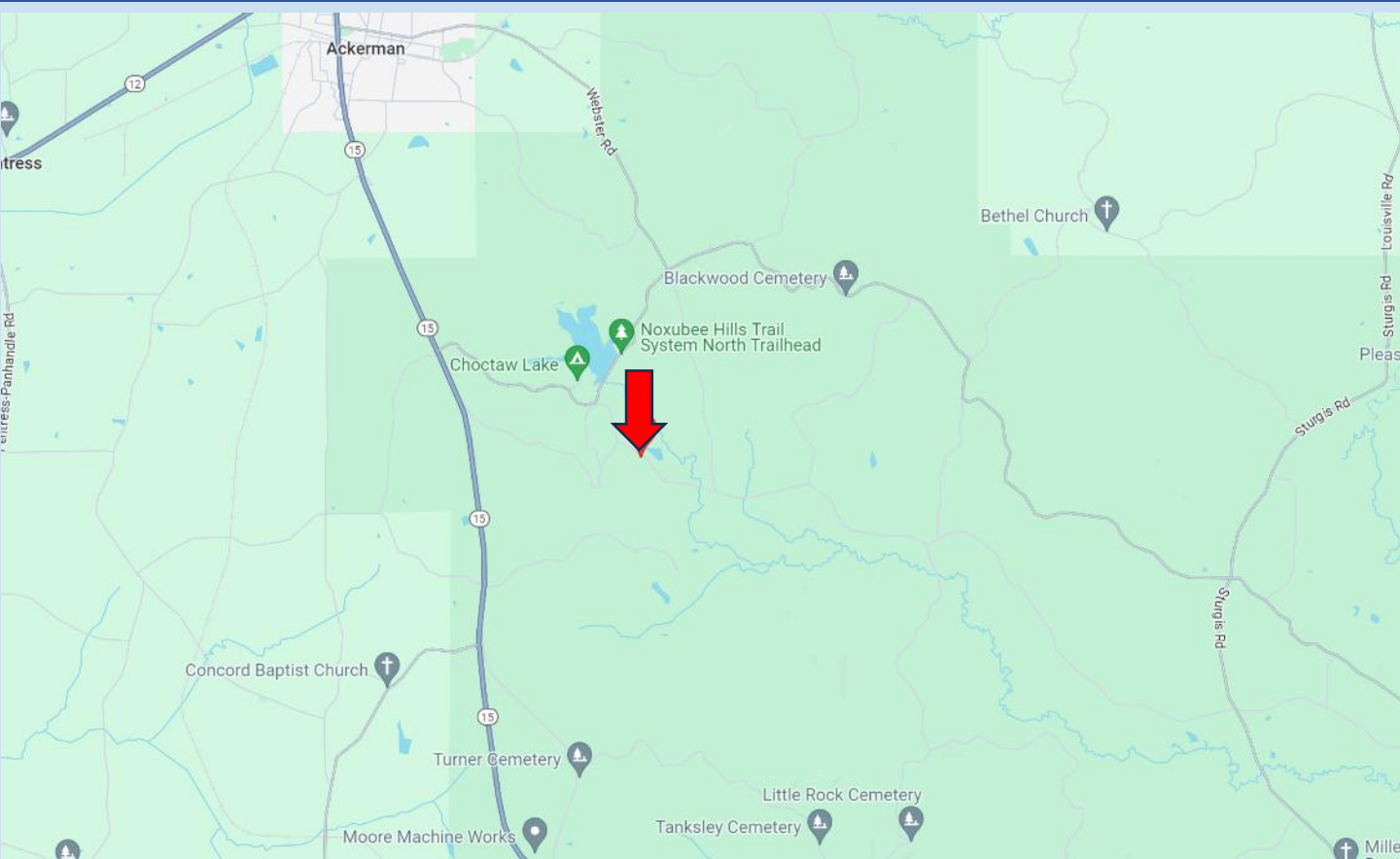
A Real Estate Expert You Can Trust

TomSmithLandandHomes.com

Information is believed to be accurate but not guaranteed.

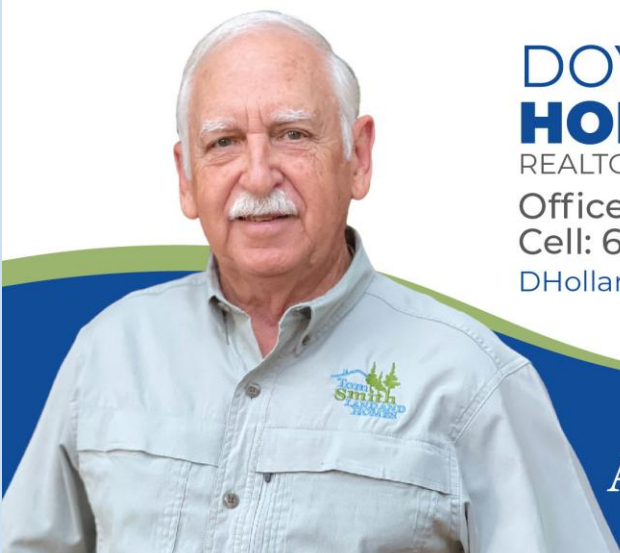


DIRECTIONAL MAP



Directions from Hwy 15 and Hwy 12 in Ackerman, MS: Travel Hwy 15 South for 3.3 miles. Turn left onto Choctaw Lake Road and travel 1.5 miles. Make a slight right to the gate for US Forestry Road #968-2. After .2 miles, the property will be on your right.

[Google Map Link](#)



**DOYES
HOLLAND**
REALTOR®

Office: 662.268.6333

Cell: 662.312.2165

DHolland@TomSmithLand.com



Expect More. Get More.

A Real Estate Expert You Can Trust

TomSmithLandandHomes.com

Information is believed to be accurate but not guaranteed.

