

Quiet Washington County Home



265 Primrose Street Greenville, MS 38701

\$148,500

Welcome to this cozy 3-bedroom, 2-bath home in a quiet Greenville, MS neighborhood. With 1,764 sq ft of living space, this charming house is conveniently located near local retail and grocery stores. The spacious den and eat-in kitchen create a comfortable and inviting atmosphere. Enjoy the fenced backyard with no rear neighbors, offering serene views of agricultural fields. Plus, there's a local elementary school just a short walk away. This home is perfect for those seeking comfort and convenience. Call Bruce to schedule your tour today of this Washington County home today!



**BRUCE
WEST**
REALTOR®

Office: 662.441.2500

Cell: 662.873.3007

Bruce@TomSmithLand.com



A Real Estate Expert You Can Trust

TomSmithLandandHomes.com

Information is believed to be accurate but not guaranteed.





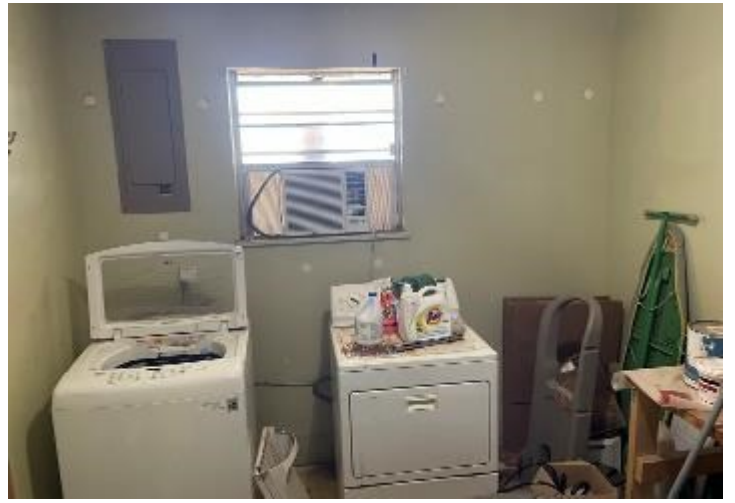
BRUCE WEST
REALTOR®
Office: 662.441.2500
Cell: 662.873.3007
Bruce@TomSmithLand.com



A Real Estate Expert You Can Trust
TomSmithLandandHomes.com

Information is believed to be accurate but not guaranteed.





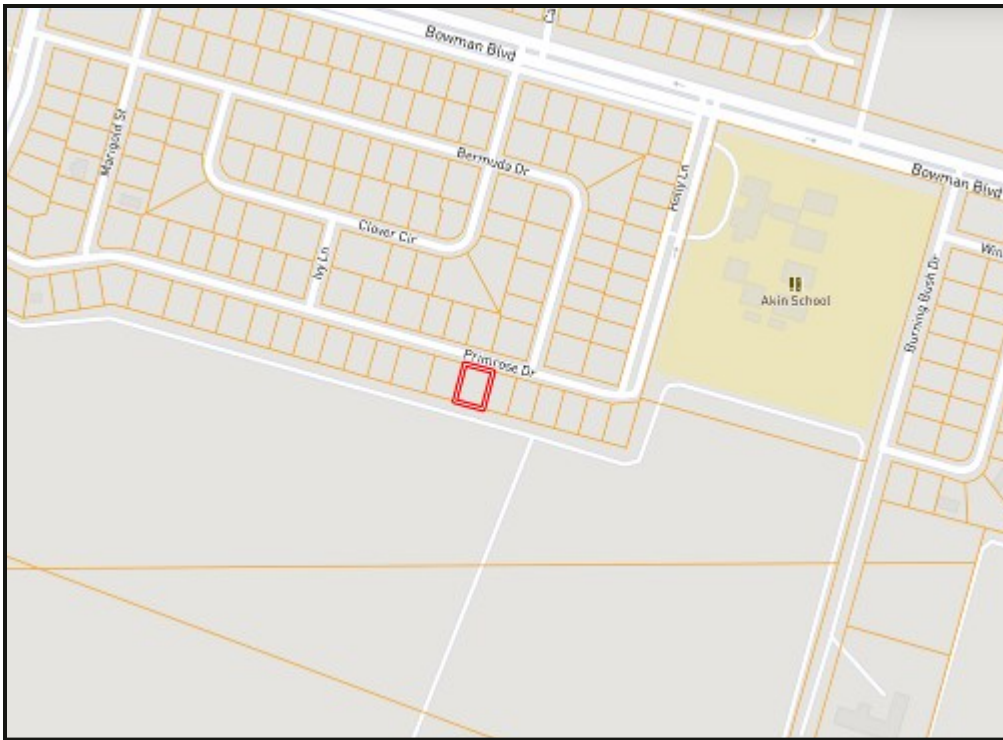
BRUCE WEST
 REALTOR®
 Office: 662.441.2500
 Cell: 662.873.3007
 Bruce@TomSmithLand.com



A Real Estate Expert You Can Trust
 TomSmithLandandHomes.com

Information is believed to be accurate but not guaranteed.





Ownership Map



Aerial Map

[Click Here for an
Interactive Map](#)

BRUCE WEST
REALTOR®
Office: 662.441.2500
Cell: 662.873.3007
Bruce@TomSmithLand.com

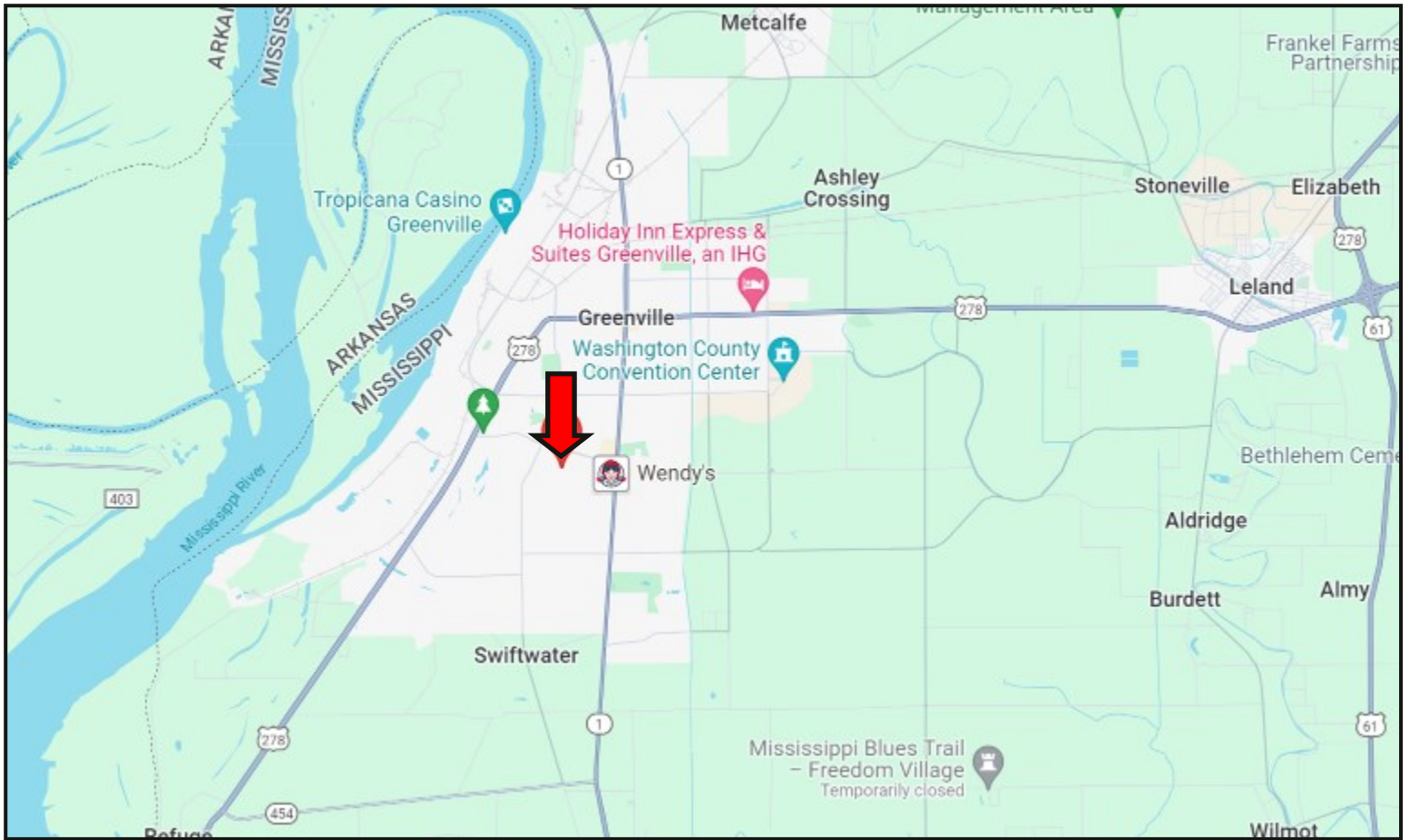


A Real Estate Expert You Can Trust
TomSmithLandandHomes.com

Information is believed to be accurate but not guaranteed.



Directional Map



Directions from Hwy 278 and Hwy 1 in Greenville, MS: Travel south on Hwy 1/Martin Luther King Jr. Drive for 1.8 miles. Turn right onto Bowman Blvd and travel 0.5 miles. Turn left onto Holly Ln and travel 0.2 miles. Holly Ln becomes Primrose Street. After 456 feet, the home will be on the left.
[265 Primrose Street Greenville, MS 38701—Click for Directions](#)



**BRUCE
WEST**
REALTOR®

Office: 662.441.2500
Cell: 662.873.3007
Bruce@TomSmithLand.com



A Real Estate Expert You Can Trust

TomSmithLandandHomes.com

Information is believed to be accurate but not guaranteed.

