

40± Wooded Acres in SE Bolivar County



\$132,000

If you're in the market for hunting land 20 minutes from Cleveland in SE Bolivar County, then this 40± acre property is worth checking out! The central area of the tract has the potential to hold water, making it great for duck hunting and attracting other wildlife. Two sides of the property are bordered by farmland, while the other two are surrounded by wooded acreage. Get in touch with Charlie Heinz to arrange a private viewing!



**CHARLIE
HEINSZ**

REALTOR®

Office: 662.441.2500

Cell: 662.719.7218

Charlie@TomSmithLand.com



Expect More. Get More.

A Real Estate Expert You Can Trust

TomSmithLandandHomes.com

Information is believed to be accurate but not guaranteed.

LandReport
2011-2024
BEST
BROKERAGES



CHARLIE HEINSZ

REALTOR®

Office: 662.441.2500

Cell: 662.719.7218

Charlie@TomSmithLand.com



A Real Estate Expert You Can Trust

TomSmithLandandHomes.com

Information is believed to be accurate but not guaranteed.





CHARLIE HEINSZ

REALTOR®

Office: 662.441.2500

Cell: 662.719.7218

Charlie@TomSmithLand.com

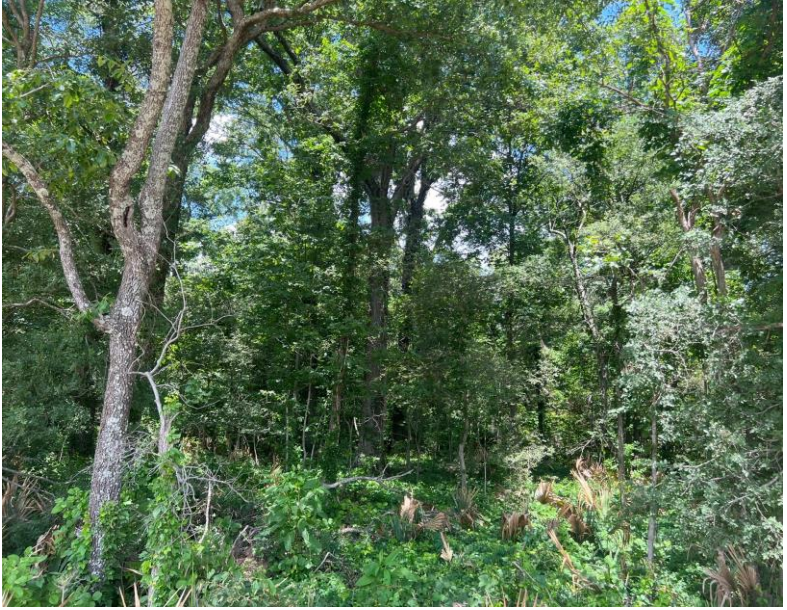


A Real Estate Expert You Can Trust

TomSmithLandandHomes.com

Information is believed to be accurate but not guaranteed.





CHARLIE HEINSZ

REALTOR®

Office: 662.441.2500

Cell: 662.719.7218

Charlie@TomSmithLand.com



A Real Estate Expert You Can Trust

TomSmithLandandHomes.com

Information is believed to be accurate but not guaranteed.





CHARLIE HEINSZ

REALTOR®

Office: 662.441.2500

Cell: 662.719.7218

Charlie@TomSmithLand.com

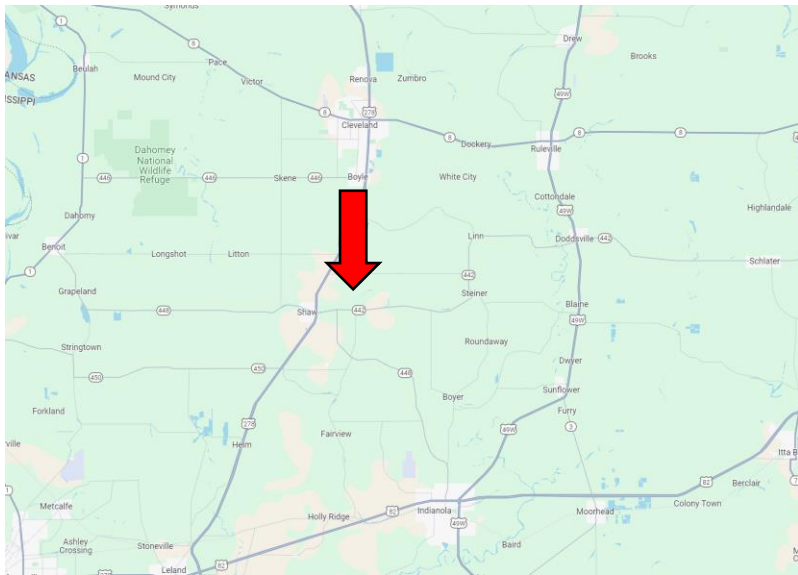
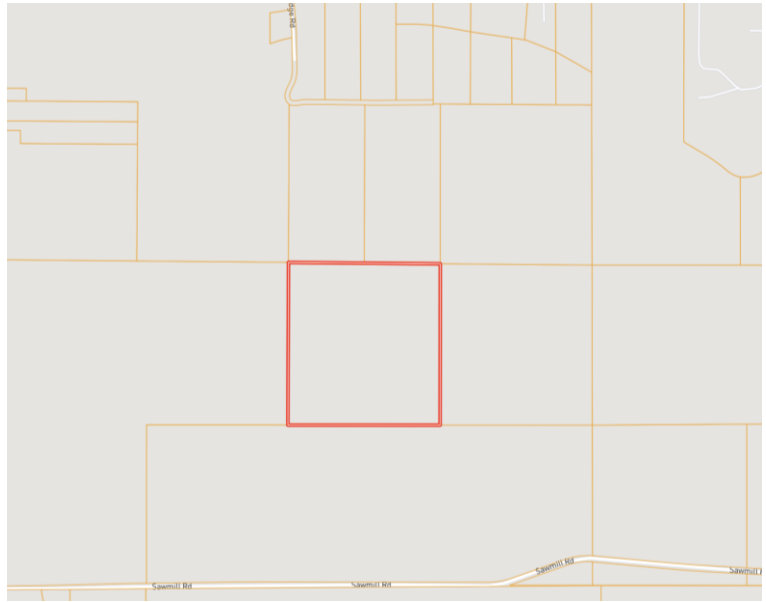
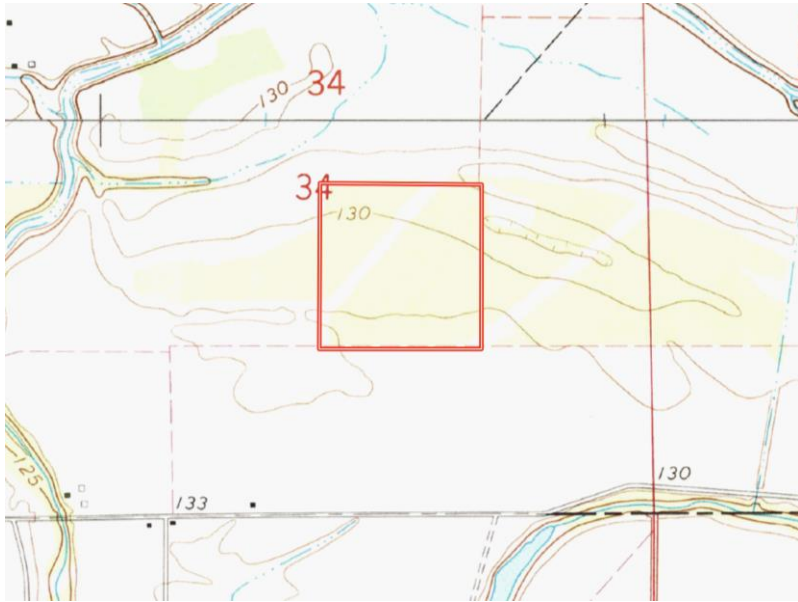


A Real Estate Expert You Can Trust

TomSmithLandandHomes.com

Information is believed to be accurate but not guaranteed.





Directions from Hwy 8 & Hwy 61 in Cleveland, MS:

Travel south on HWY 61 for 8.5 miles. Turn left onto Sandpit Road and travel 2 miles. Turn right onto Jordan Road and travel one mile before turning left onto Sawmill Road. After 1.1 miles, the property will be on the left.

[Click for Google Maps.](#)



CHARLIE HEINSZ
REALTOR®

Office: 662.441.2500
Cell: 662.719.7218
Charlie@TomSmithLand.com



Expect More. Get More.

A Real Estate Expert You Can Trust

TomSmithLandandHomes.com