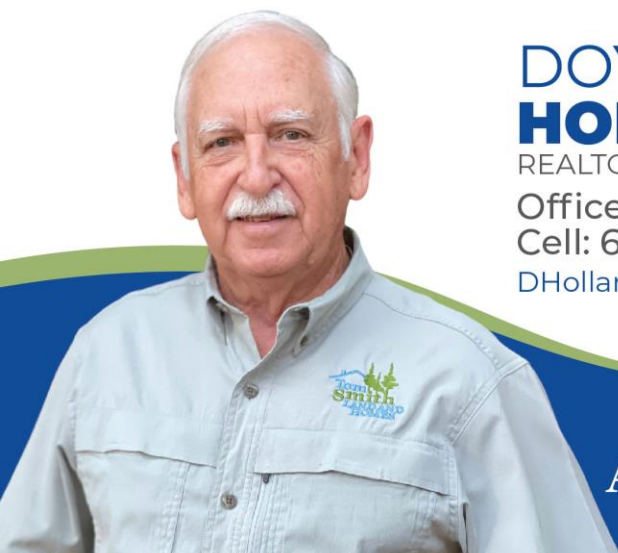


# 3 Bed/1Bath Home in Lowndes County, Mississippi



**\$165,000**

Welcome to 132 Sunny Lane! This delightful 3-bedroom, 1-bathroom home is conveniently located off Military Road in Columbus. The attached carport provides secure off-road parking. Inside, the home is spacious and features many modern updates, including a new HVAC system. The backyard is shaded, partially fenced, and includes a storage shed. Currently generating income as a short-term rental, this property is an excellent investment opportunity, whether you're looking to rent it out immediately or move in yourself. To schedule a personal tour, contact Doyes Holland today!



**DOYES  
HOLLAND**  
REALTOR®

Office: 662.268.6333

Cell: 662.312.2165

[DHolland@TomSmithLand.com](mailto:DHolland@TomSmithLand.com)



Expect More. Get More.

**A Real Estate Expert You Can Trust**

[TomSmithLandandHomes.com](http://TomSmithLandandHomes.com)

Information is believed to be accurate but not guaranteed.





**DOYES  
HOLLAND**  
REALTOR®

Office: 662.268.6333

Cell: 662.312.2165

DHolland@TomSmithLand.com



Expect More. Get More.

**A Real Estate Expert You Can Trust**

TomSmithLandandHomes.com



Information is believed to be accurate but not guaranteed.



**DOYES  
HOLLAND**

REALTOR®

Office: 662.268.6333

Cell: 662.312.2165

DHolland@TomSmithLand.com



**A Real Estate Expert You Can Trust**

TomSmithLandandHomes.com

Information is believed to be accurate but not guaranteed.



# AERIAL MAP



[INTERACTIVE MAP LINK](#)



**DOYES  
HOLLAND**  
REALTOR®

Office: 662.268.6333

Cell: 662.312.2165

DHolland@TomSmithLand.com



Expect More. Get More.

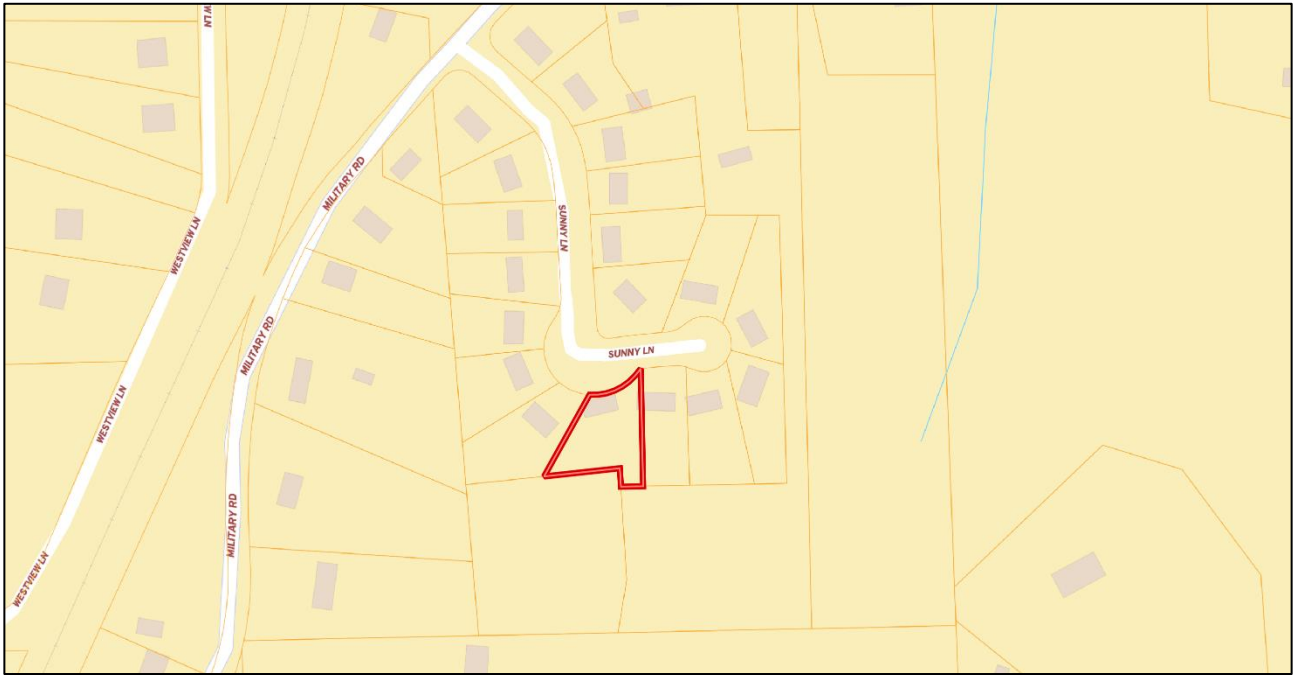
**A Real Estate Expert You Can Trust**

TomSmithLandandHomes.com

Information is believed to be accurate but not guaranteed.



# OWNERSHIP MAP



# FLOOD MAP



**DOYES  
HOLLAND**  
REALTOR®

Office: 662.268.6333  
Cell: 662.312.2165  
DHolland@TomSmithLand.com



Expect More. Get More.

**A Real Estate Expert You Can Trust**

TomSmithLandandHomes.com

LandReport  
2011-2024  
BEST

# DIRECTIONAL MAP



From intersection of Military and Bluecut Rd, Travel Northeast on Military Rd for 0.2 miles. At the traffic circle, continue straight on Military Rd for 0.1 miles. At the next traffic circle, take the 1st exit and stay on Military Rd for 2.9 mi. Turn right onto Sunny Ln for 0.1 miles, and the house will be on the right. [GOOGLE MAP LINK](#)

**132 Sunny Ln, Columbus, MS 39705**



**DOYES  
HOLLAND**  
REALTOR®

Office: 662.268.6333  
Cell: 662.312.2165  
[DHolland@TomSmithLand.com](mailto:DHolland@TomSmithLand.com)



Expect More. Get More.

**A Real Estate Expert You Can Trust**

[TomSmithLandandHomes.com](http://TomSmithLandandHomes.com)

Information is believed to be accurate but not guaranteed.

