

# Move-In Ready Home in Sunflower County, MS



**114 S HWY 49 INDIANOLA, MS 38751**

**\$292,500**

Welcome to your dream home in Sunflower County, MS! This stunning 2,800 sq/ft two-story house, built in 1965, sits on 4.41 +/- acres along the beautiful banks of Indian Bayou. The spacious, manicured yard is perfect for outdoor activities and relaxation. Inside, you'll find five bedrooms and three bathrooms featuring elegant hardwood floors, marble countertops, and stainless steel appliances. Cozy up by the wood-burning fireplace or enjoy a peaceful evening on the screened porch. The property also has a swimming pool with a pool house, perfect for summer fun, and a large workshop and carport for all your projects and storage needs. This home is turn-key, move-in ready, and in excellent condition. Don't miss out on this exceptional opportunity! Call Emerson to schedule a tour today!



**EMERSON  
LOVELACE**

REALTOR®

Office: 662.441.2500

Cell: 601.715.3302

Emerson@TomSmithLand.com



Expect More. Get More.

**A Real Estate Expert You Can Trust**

TomSmithLandandHomes.com

Information is believed to be accurate but not guaranteed.





# A Real Estate Expert *You Can Trust!*

**EMERSON LOVELACE**  
REALTOR®

O: 662.441.2500 C: 601.715.3302

Emerson@TomSmithLand.com

TomSmithLandandHomes.com



Expect More. Get More.



Information is believed to be accurate but not guaranteed.



# A Real Estate Expert *You Can Trust!*

**EMERSON LOVELACE**  
REALTOR®

O: 662.441.2500 C: 601.715.3302

Emerson@TomSmithLand.com

TomSmithLandandHomes.com



Expect More. Get More.



Information is believed to be accurate but not guaranteed.



**A Real Estate Expert**  
*You Can Trust!*

**EMERSON LOVELACE**  
REALTOR®

O: 662.441.2500 C: 601.715.3302

Emerson@TomSmithLand.com

TomSmithLandandHomes.com

**Tom Smith**  
LAND AND  
HOMES

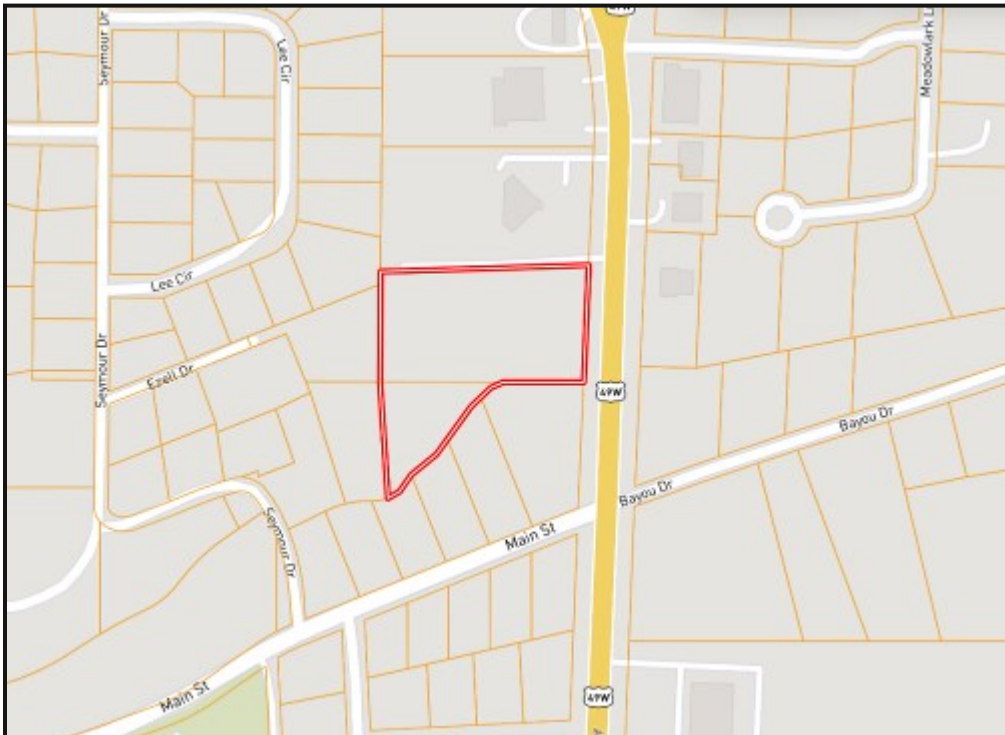
Expect More. Get More.

2011-2024  
**BEST**  
PROSERVICES

Information is believed to be accurate but not guaranteed.



# Aerial Map



# Ownership Map

[Click Here for an  
Interactive Map](#)

**A Real Estate Expert  
You Can Trust!**

**EMERSON LOVELACE**  
REALTOR®

O: 662.441.2500 C: 601.715.3302

Emerson@TomSmithLand.com

TomSmithLandandHomes.com

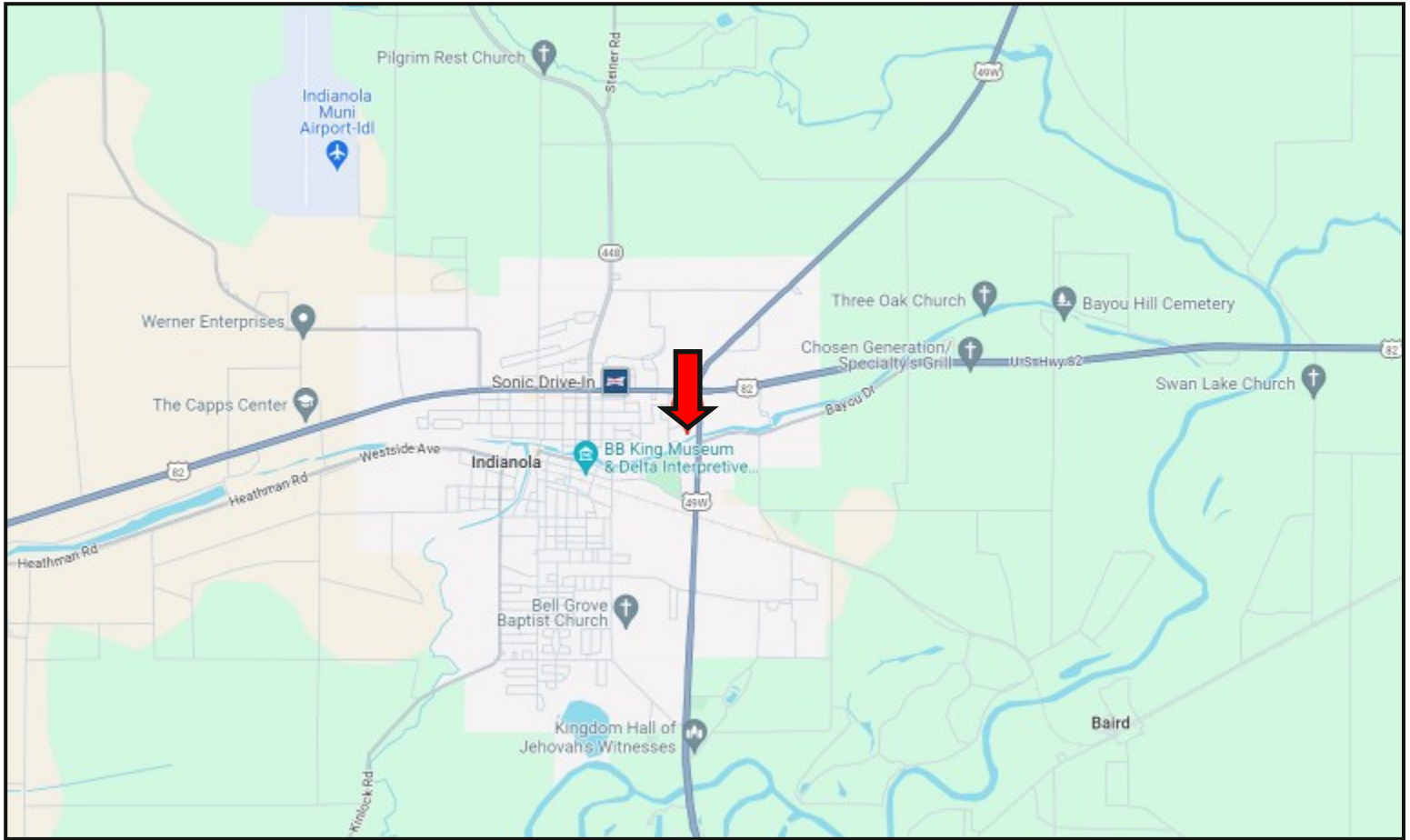


Expect More. Get More.



Information is believed to be accurate but not guaranteed.

# Directional Map



Directions from the intersection of Hwy 82 and Hwy 49 in Indianola, MS: Turn left onto Hwy 49 South/Martin Luther King Drive. After .3 miles, the house will be on the right. 114 HWY 49 SOUTH INDIANOLA, MS 38751 – CLICK FOR GOOGLE MAP LINK



**EMERSON  
LOVELACE**  
REALTOR®

Office: 662.441.2500  
Cell: 601.715.3302

Emerson@TomSmithLand.com



Expect More. Get More.

**A Real Estate Expert You Can Trust**

TomSmithLandandHomes.com

Information is believed to be accurate but not guaranteed.

