

# 1.3± ACRE HOMESITE IN THE BROWNING CREEK SUBDIVISION OF OKTIBBEHA COUNTY, MS



## \$90,000

Are you looking to build your dream home in one of the most sought-after neighborhoods in Starkville, MS? Here's your chance! This 1.3+/- acre lot is one of the last lots remaining in the Browning Creek subdivision of Oktibbeha County. It also offers ready-to-use utilities and fiber optic internet. This neighborhood also allows exclusive access to a large private lake stocked with trophy bass, bream, crappie, and striped bass. If you are looking for a homesite with great neighbors and privacy, look no further than this lot. To schedule a private showing, call or text Walker! *\*AGENT-OWNED PROPERTY\**

**Directions from Starkville, MS:** From Starkville take Yellow Jacket Drive to South Montgomery Street for .6 miles. Then take Oktoc Road to Browning Creek Road for 8.8 miles. Continue on Browning Creek Road and take Lakeshore Drive West for 1.4 miles and the property will be on your left.

[Google Map Link](#)

**WALKER  
TRANUM**  
REALTOR®

Office: 662.268.6333

Cell: 662.769.1442

Walker@TomSmithHomes.com



Expect More. Get More.

**A Real Estate Expert You Can Trust**

TomSmithLandandHomes.com

Information is believed to be accurate but not guaranteed.







**WALKER  
TRANUM**  
REALTOR®

Office: 662.268.6333

Cell: 662.769.1442

Walker@TomSmithHomes.com



Expect More. Get More.

**A Real Estate Expert You Can Trust**

TomSmithLandandHomes.com

Information is believed to be accurate but not guaranteed.





# Aerial Map



Click [Here](#) for an Interactive Map Link



**WALKER  
TRANUM**  
REALTOR®

Office: 662.268.6333

Cell: 662.769.1442

Walker@TomSmithHomes.com



Expect More. Get More.

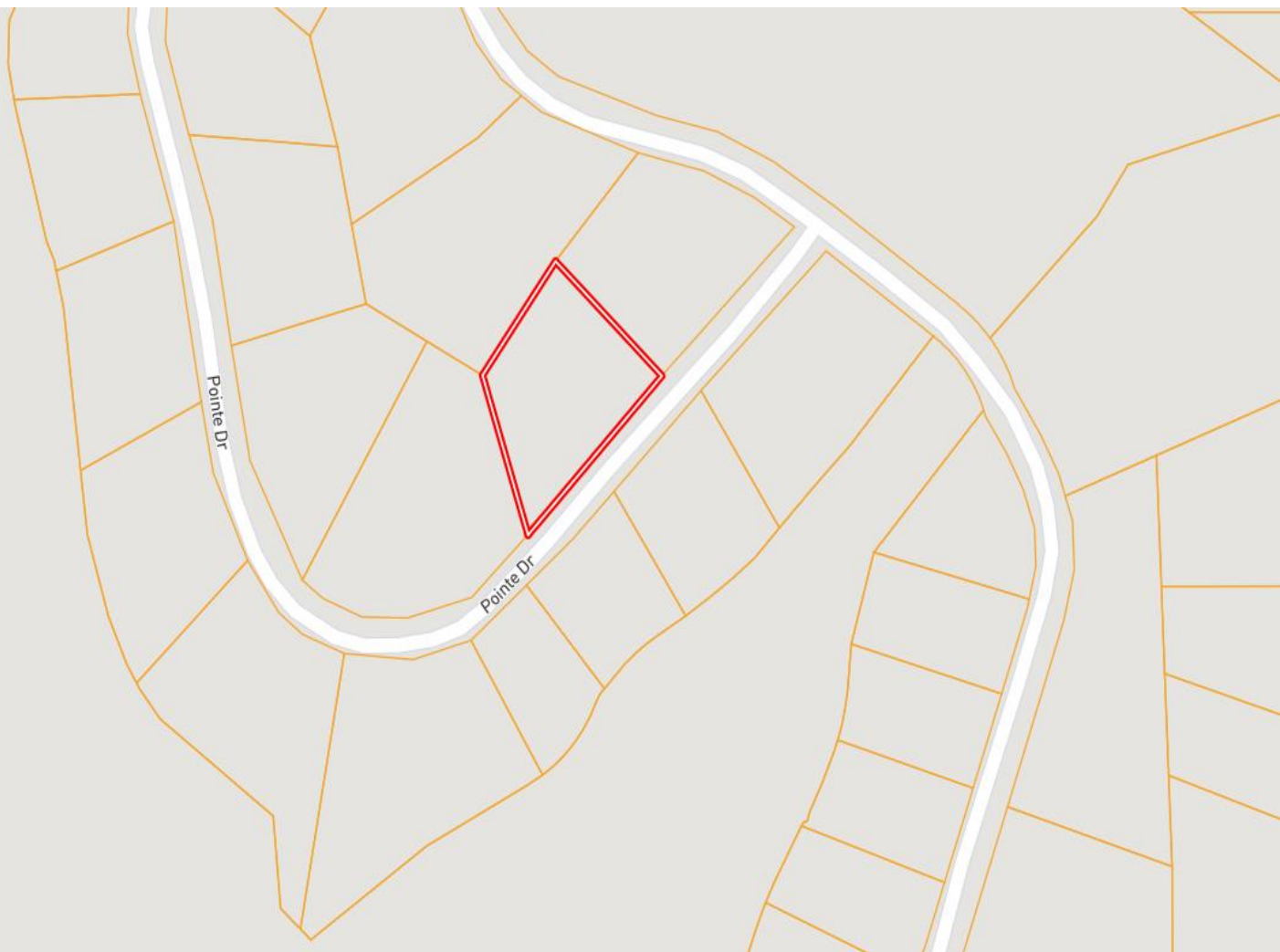
**A Real Estate Expert You Can Trust**

TomSmithLandandHomes.com

Information is believed to be accurate but not guaranteed.



# Ownership Map



**WALKER  
TRANUM**  
REALTOR®

Office: 662.268.6333

Cell: 662.769.1442

Walker@TomSmithHomes.com



Expect More. Get More.

**A Real Estate Expert You Can Trust**

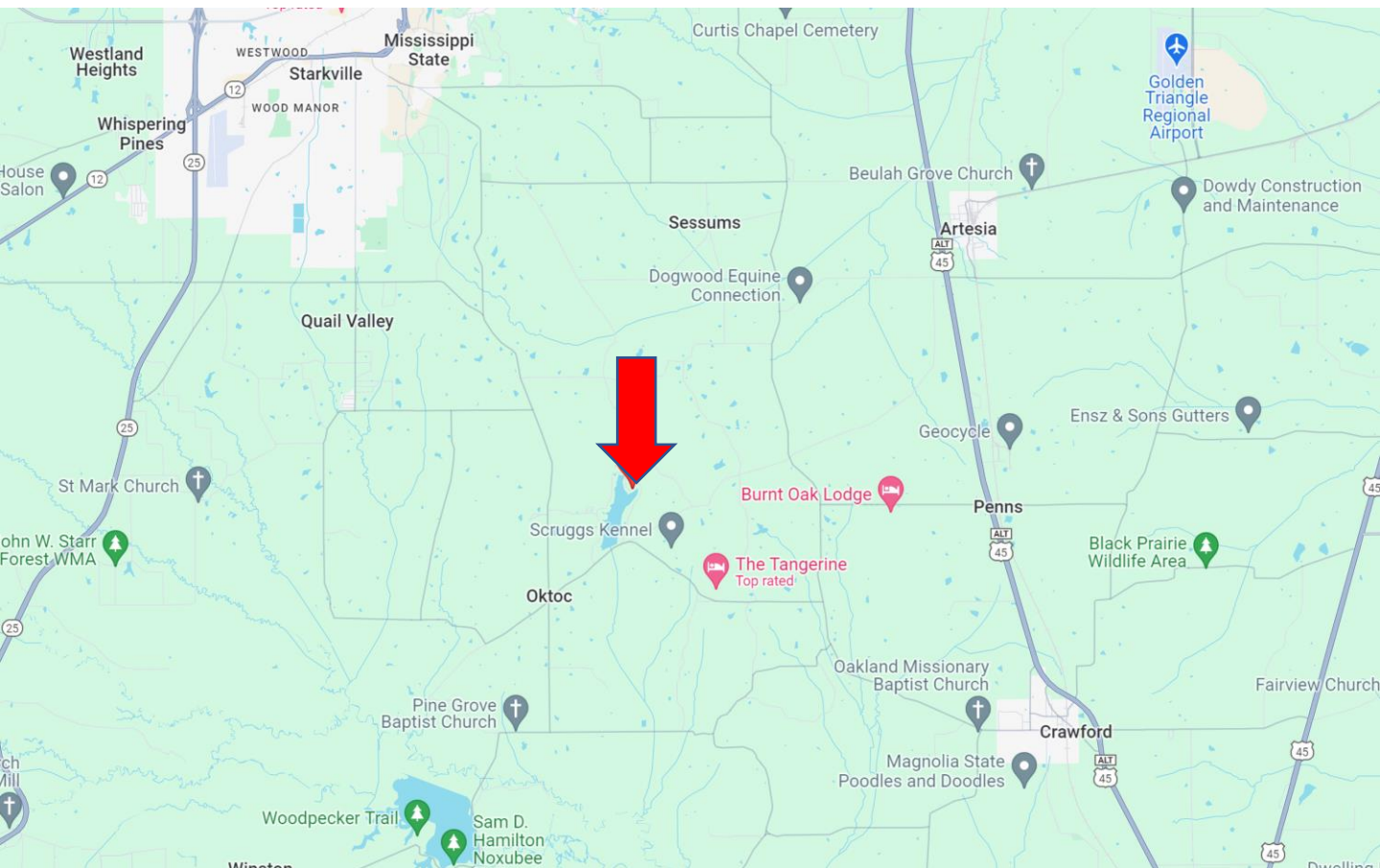
TomSmithLandandHomes.com

Information is believed to be accurate but not guaranteed.





# Directional Map



**Directions from Hwy 12 and Blackjack Rd. in Starkville, MS:** Travel Blackjack Road for 0.9 miles. At the traffic circle, take the first exit onto Oktoc Road and travel 7.4 miles. Turn left Browning Creek Road and travel 0.8 miles. Turn left onto Lakeshore Drive West and travel 1.2 miles. Turn right onto Pointe Drive. The property will be on the right. [Google Map Link](#)



**WALKER  
TRANUM**  
REALTOR®

Office: 662.268.6333

Cell: 662.769.1442

Walker@TomSmithHomes.com



Expect More. Get More.

**A Real Estate Expert You Can Trust**

TomSmithLandandHomes.com

Information is believed to be accurate but not guaranteed.

