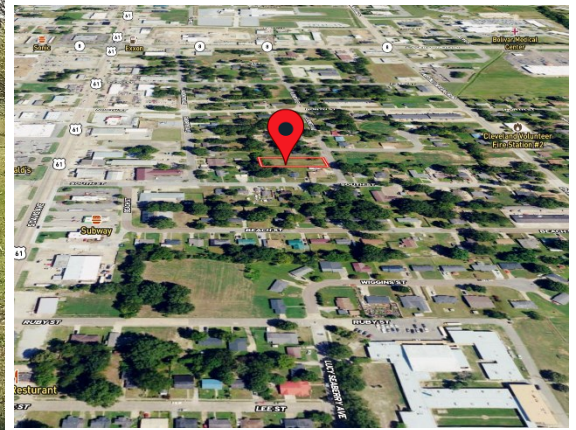


# BOLIVAR COUNTY RESIDENTIAL LOT

## 114 S Jones Avenue, Cleveland, MS 38732



**\$19,500**



Discover an exceptional opportunity in Cleveland, Bolivar County, MS, with this 0.4± acre lot, a blank slate ready for your vision. This property offers plenty of space in a welcoming community and is perfectly positioned for building your new home or a promising investment property. With utilities nearby and easy access to local amenities, this lot provides the ideal foundation for creating a custom residence or developing a lucrative rental property. Take advantage of this chance to design and build in a growing area with endless possibilities. Call Emerson to schedule your viewing today!



**EMERSON  
LOVELACE**

REALTOR®

Office: 662.441.2500

Cell: 601.715.3302

Emerson@TomSmithLand.com



**A Real Estate Expert You Can Trust**

TomSmithLandandHomes.com

Information is believed to be accurate but not guaranteed.





# A Real Estate Expert *You Can Trust!*

**EMERSON LOVELACE**  
REALTOR®

O: 662.441.2500 C: 601.715.3302

Emerson@TomSmithLand.com

TomSmithLandandHomes.com



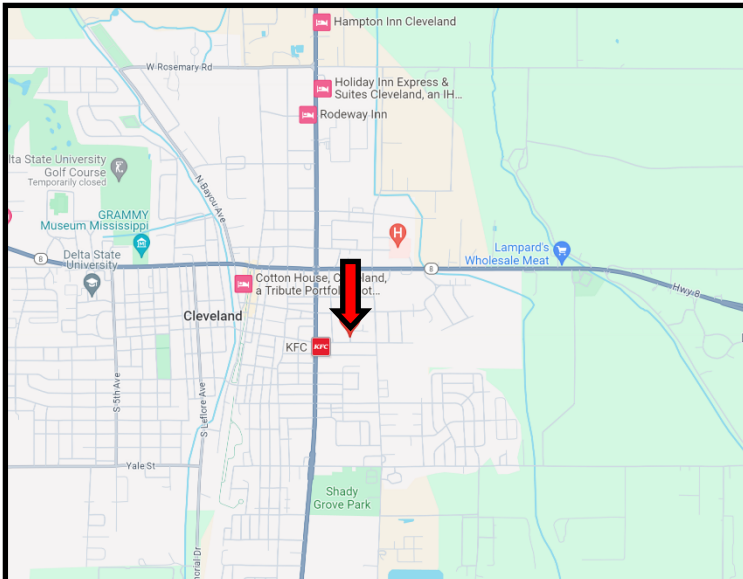
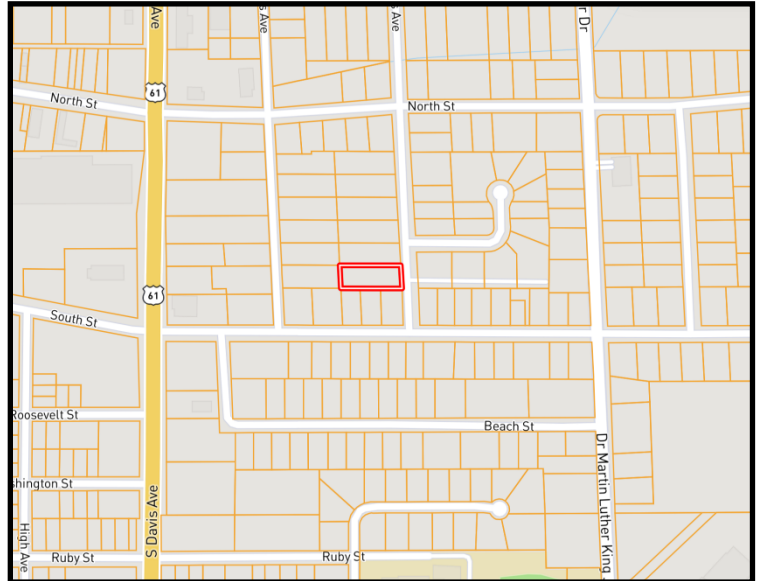
Expect More. Get More.



Information is believed to be accurate but not guaranteed.

# MAPS | LANDID INTERACTIVE MAP LINK

114 S Jones Avenue, Cleveland, MS 38732



**Directions from the intersection of Hwy 8 and Hwy 61 in Cleveland, MS: Travel south on Hwy 61 for 0.4 miles. Turn left onto South St. and travel 0.2 miles. Turn left onto S Jones Ave. The property will be on your left.**

**114 S Jones Avenue Cleveland, MS 39732**

**– CLICK FOR GOOGLE MAP LINK**

**A Real Estate Expert  
You Can Trust!**

**EMERSON LOVELACE**  
REALTOR®

O: 662.441.2500 C: 601.715.3302

Emerson@TomSmithLand.com

TomSmithLandandHomes.com



Expect More. Get More.



Information is believed to be accurate but not guaranteed.