



330.5+/- Acres of Pastureland & Timber Rankin County, MS



\$2,644,000

Harrell Road, Pelahatchie, MS 39145

Discover the perfect blend of pasture and timberland with this exceptional 330.5+/- acre property in Rankin County, located within the highly sought-after Pisgah School District. Ideal for cattle and horses, this expansive property features 131+/- acres of cross-fenced pastureland, 185+/- acres of thriving timber, and two large barns for ample hay storage. A picturesque small pond offers a water source for livestock and an inviting spot for fishing. With water and electricity already connected, this property provides an excellent opportunity to build your dream home or establish a small farm. Additional acreage is available, making this a versatile and valuable investment for your agricultural and residential aspirations. Please note that the sale is subject to a survey, and mineral rights are not conveyed.

Directions from Hwy 25 and Sandhill Rd. in Brandon, MS: Take the exit toward MS-471 N/Goshen Springs. Travel Sand Hill Rd & Lawrence Rd for 2.7 miles. Turn right onto Hwy 43 and travel 3.8 miles. Turn Right onto Harrell Road. After 3.6 miles the property will be on the right.



CLAY SIMMONS
REALTOR®

O: 601.898.2772 | C: 601.672.6864
Clay@TomSmithHomes.com



DAVID BELDEN
REALTOR®

O: 601.898.2772 | C: 601.415.3884
DBelden@TomSmithLand.com

TomSmithLandandHomes.com

Information is believed to be accurate but not guaranteed.





CLAY SIMMONS
REALTOR®

O: 601.898.2772 | C: 601.672.6864
Clay@TomSmithHomes.com



DAVID BELDEN
REALTOR®

O: 601.898.2772 | C: 601.415.3884
DBelden@TomSmithLand.com



CLAY SIMMONS
REALTOR®

O: 601.898.2772 | C: 601.672.6864
Clay@TomSmithHomes.com



DAVID BELDEN
REALTOR®

O: 601.898.2772 | C: 601.415.3884
DBelden@TomSmithLand.com

TomSmithLandandHomes.com

Information is believed to be accurate but not guaranteed.





CLAY SIMMONS
REALTOR®

O: 601.898.2772 | C: 601.672.6864
Clay@TomSmithHomes.com



DAVID BELDEN
REALTOR®

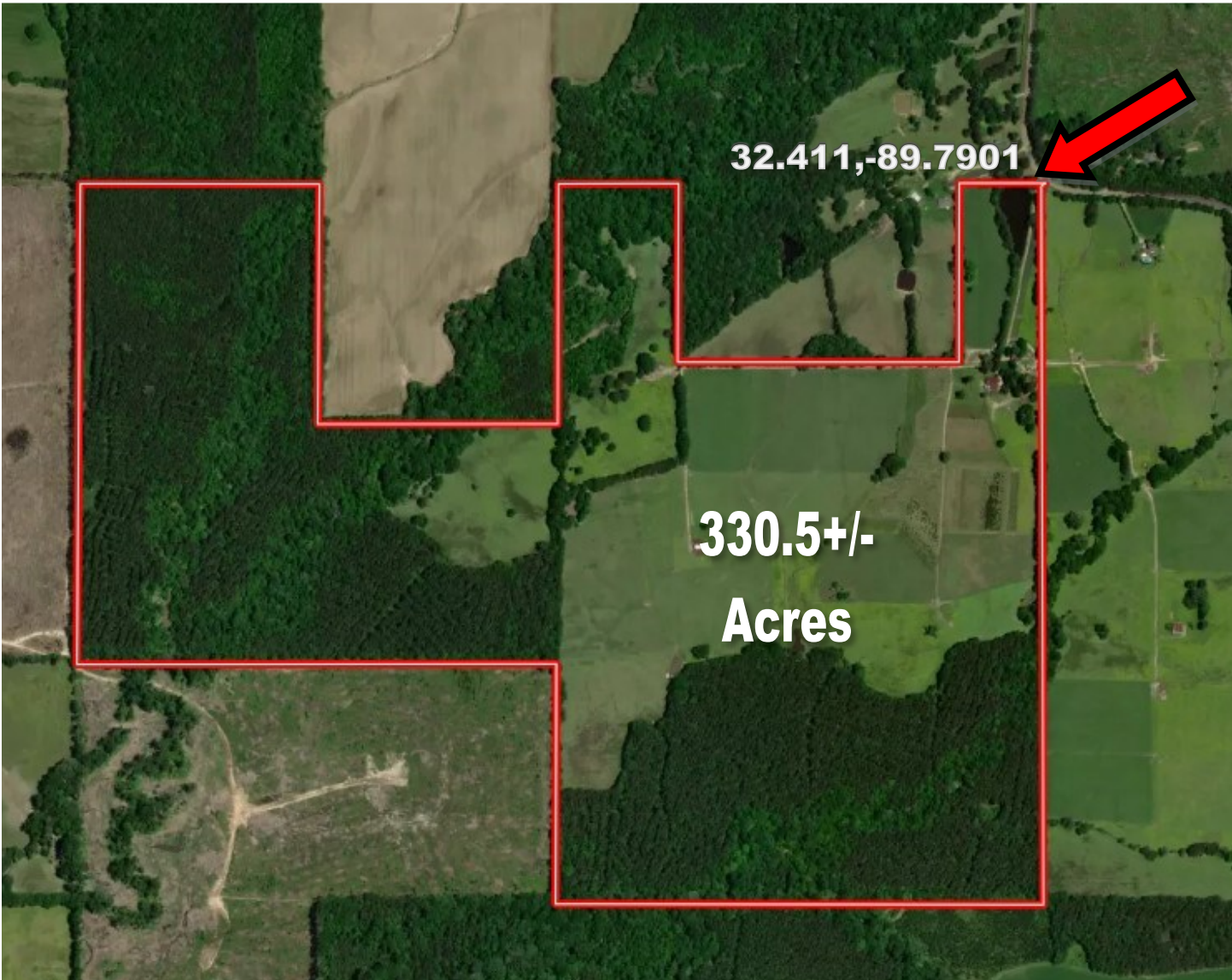
O: 601.898.2772 | C: 601.415.3884
DBelden@TomSmithLand.com

TomSmithLandandHomes.com

Information is believed to be accurate but not guaranteed.



Aerial Map



CLAY SIMMONS
REALTOR®

O: 601.898.2772 | C: 601.672.6864
Clay@TomSmithHomes.com



DAVID BELDEN
REALTOR®

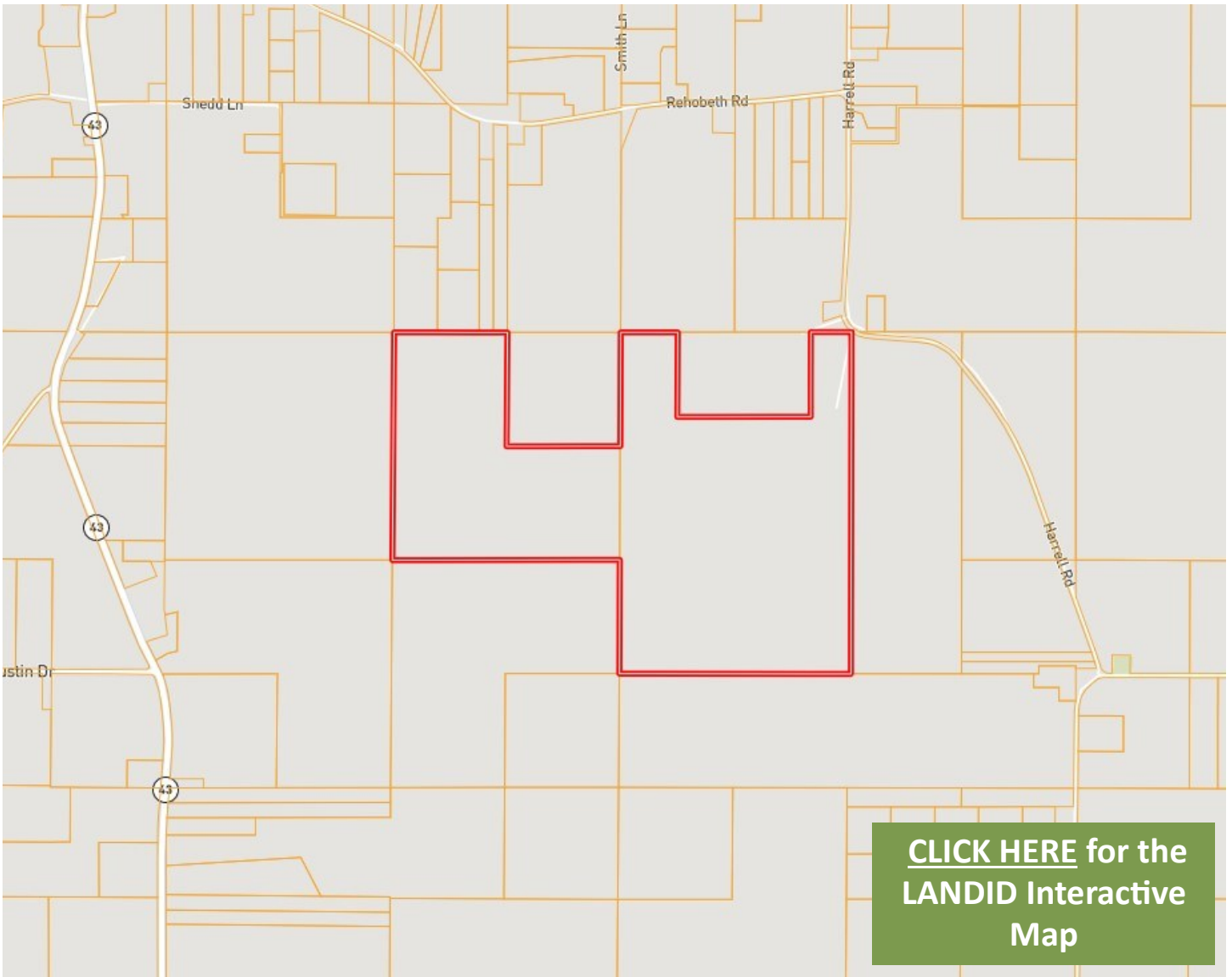
O: 601.898.2772 | C: 601.415.3884
DBelden@TomSmithLand.com

TomSmithLandandHomes.com

Information is believed to be accurate but not guaranteed.



Ownership Map



CLAY SIMMONS
REALTOR®

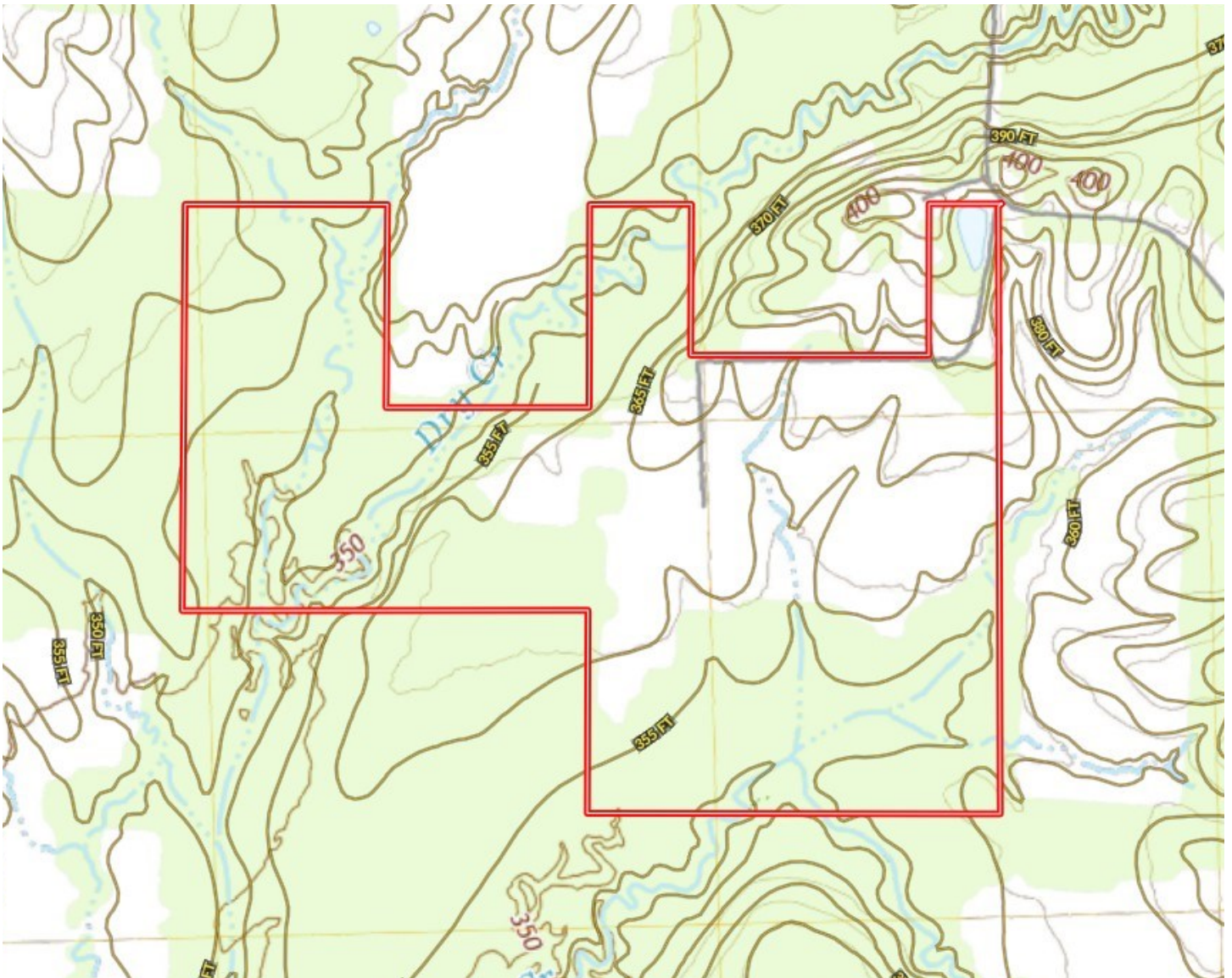
O: 601.898.2772 | C: 601.672.6864
Clay@TomSmithHomes.com



DAVID BELDEN
REALTOR®

O: 601.898.2772 | C: 601.415.3884
DBelden@TomSmithLand.com

Topography Map



CLAY SIMMONS
REALTOR®

O: 601.898.2772 | C: 601.672.6864
Clay@TomSmithHomes.com



Expect More. Get More.



DAVID BELDEN
REALTOR®

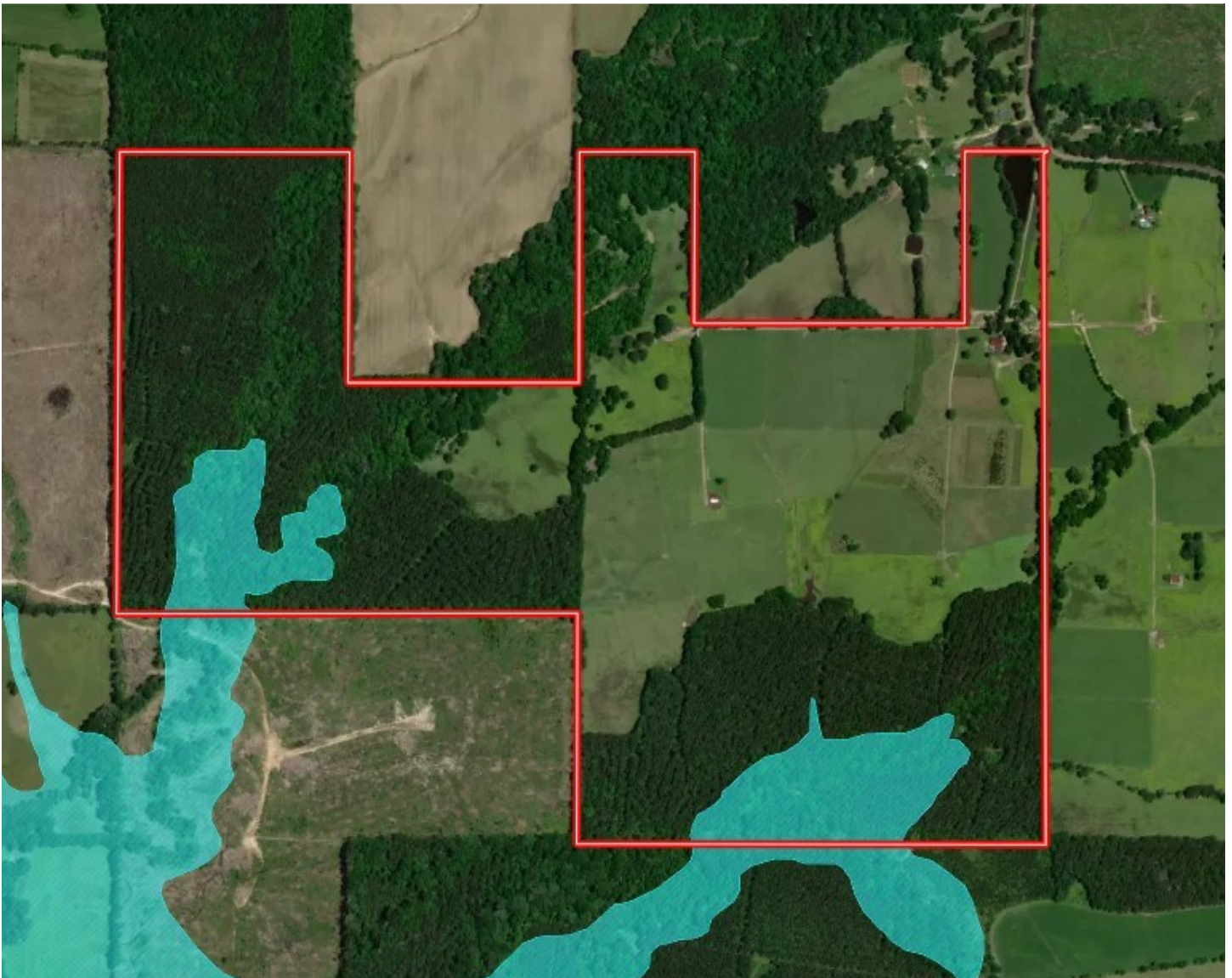
O: 601.898.2772 | C: 601.415.3884
DBelden@TomSmithLand.com

TomSmithLandandHomes.com

Information is believed to be accurate but not guaranteed.



Flood Map



CLAY SIMMONS
REALTOR®

O: 601.898.2772 | C: 601.672.6864
Clay@TomSmithHomes.com



DAVID BELDEN
REALTOR®

O: 601.898.2772 | C: 601.415.3884
DBelden@TomSmithLand.com

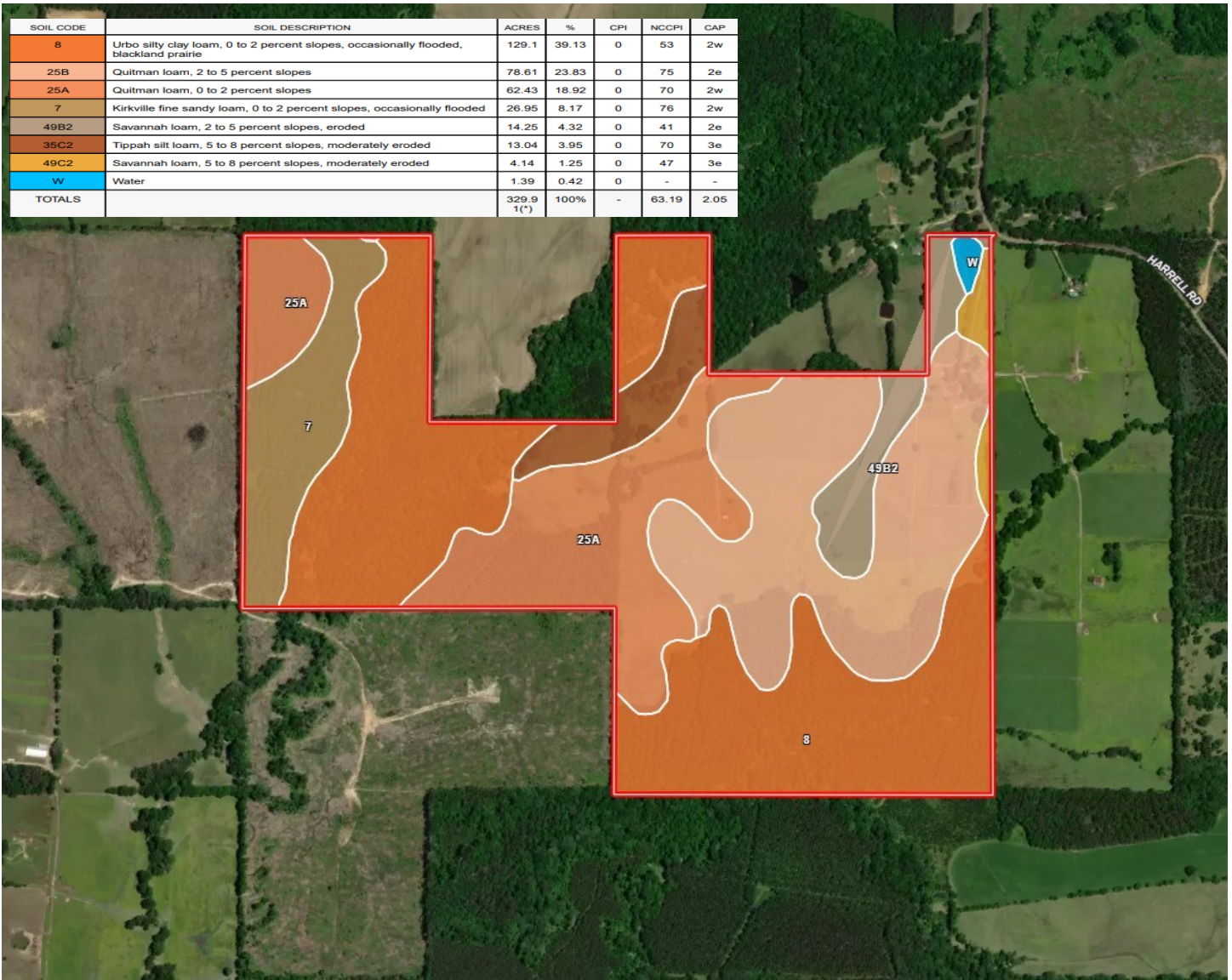
TomSmithLandandHomes.com

Information is believed to be accurate but not guaranteed.



Soil Map

SOIL CODE	SOIL DESCRIPTION	ACRES	%	CPI	NCCPI	CAP
8	Urbo silty clay loam, 0 to 2 percent slopes, occasionally flooded, blackland prairie	129.1	39.13	0	53	2w
25B	Quitman loam, 2 to 5 percent slopes	78.61	23.83	0	75	2e
25A	Quitman loam, 0 to 2 percent slopes	62.43	18.92	0	70	2w
7	Kirkville fine sandy loam, 0 to 2 percent slopes, occasionally flooded	26.95	8.17	0	76	2w
49B2	Savannah loam, 2 to 5 percent slopes, eroded	14.25	4.32	0	41	2e
35C2	Tippah silt loam, 5 to 8 percent slopes, moderately eroded	13.04	3.95	0	70	3e
49C2	Savannah loam, 5 to 8 percent slopes, moderately eroded	4.14	1.25	0	47	3e
W	Water	1.39	0.42	0	-	-
TOTALS		329.9 1(*)	100%	-	63.19	2.05



CLAY SIMMONS
REALTOR®

O: 601.898.2772 | C: 601.672.6864
Clay@TomSmithHomes.com



DAVID BELDEN
REALTOR®

O: 601.898.2772 | C: 601.415.3884
DBelden@TomSmithLand.com

TomSmithLandandHomes.com

Information is believed to be accurate but not guaranteed.



Directional Map



Harrell Road, Pelahatchie, MS 39145

Directions from Hwy 25 and Sandhill Rd. in Brandon, MS: Take the exit toward MS-471 N/ Goshen Springs. Travel Sand Hill Rd & Lawrence Rd for 2.7 miles. Turn right onto Hwy 43 and travel 3.8 miles. Turn Right onto Harrell Road. After 3.6 miles the property will be on the right. [GOOGLE MAP LINK](#)



CLAY SIMMONS
REALTOR®

O: 601.898.2772 | C: 601.672.6864
Clay@TomSmithHomes.com



DAVID BELDEN
REALTOR®

O: 601.898.2772 | C: 601.415.3884
DBelden@TomSmithLand.com

TomSmithLandandHomes.com

Information is believed to be accurate but not guaranteed.

