

# RECREATIONAL TRACT

## 63± Acres in Lauderdale County, MS



**\$250,000**

Are you looking for a place to get away to on the weekends? Look no further than this 63+/- acres in Lauderdale County, MS. This property is loaded with a mixture of mature timber. Wide roads for easy access are traversing throughout the property. There are also multiple shooting houses/ stand locations on this property. Plenty of deer and turkey signs were present upon the initial inspection of the property. This tract consists of rolling hills with big oaks and pines everywhere you look. An additional 15+/- acres and a house with a 3+/- acre lake are also available for purchase. \*Property will be accessed via deeded easement\* To schedule a private showing, call or text Walker!



**WALKER  
TRANUM**  
REALTOR®

Office: 662.268.6333  
Cell: 662.769.1442  
Walker@TomSmithHomes.com



Expect More. Get More.

**A Real Estate Expert You Can Trust**  
TomSmithLandandHomes.com

Information is believed to be accurate but not guaranteed.





**WALKER  
TRANUM**  
REALTOR®

Office: 662.268.6333

Cell: 662.769.1442

Walker@TomSmithHomes.com



Expect More. Get More.

**A Real Estate Expert You Can Trust**

TomSmithLandandHomes.com

Information is believed to be accurate but not guaranteed.





**WALKER  
TRANUM**  
REALTOR®

Office: 662.268.6333

Cell: 662.769.1442

[Walker@TomSmithHomes.com](mailto:Walker@TomSmithHomes.com)



Expect More. Get More.

**A Real Estate Expert You Can Trust**

[TomSmithLandandHomes.com](http://TomSmithLandandHomes.com)

Information is believed to be accurate but not guaranteed.



# Aerial Map



Click [Here](#) for a LandId Interactive Map Link



**WALKER  
TRANUM**  
REALTOR®

Office: 662.268.6333  
Cell: 662.769.1442  
Walker@TomSmithHomes.com



Expect More. Get More.

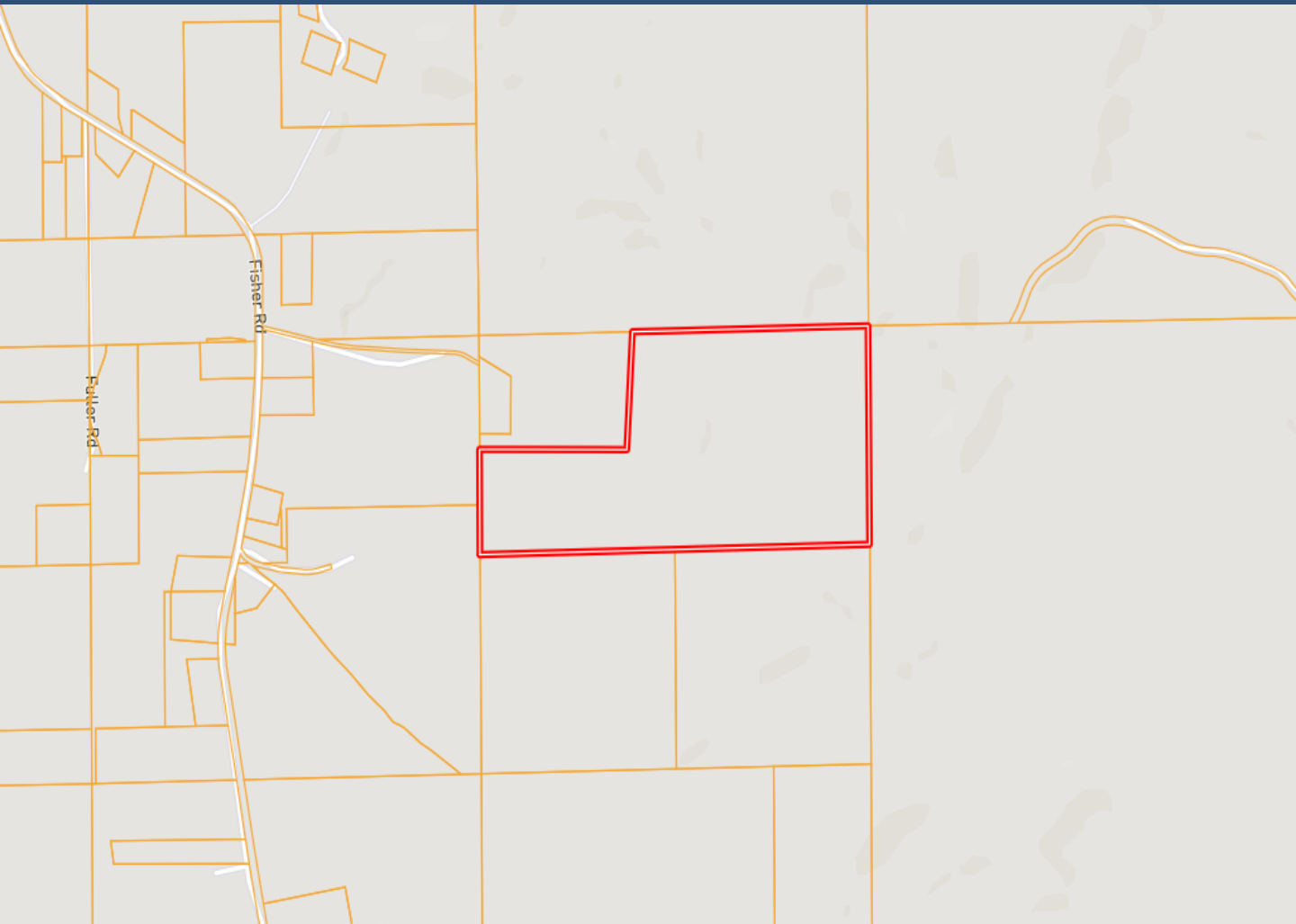
**A Real Estate Expert You Can Trust**

TomSmithLandandHomes.com

Information is believed to be accurate but not guaranteed.



# Ownership Map



**WALKER  
TRANUM**  
REALTOR®

Office: 662.268.6333

Cell: 662.769.1442

Walker@TomSmithHomes.com



Expect More. Get More.

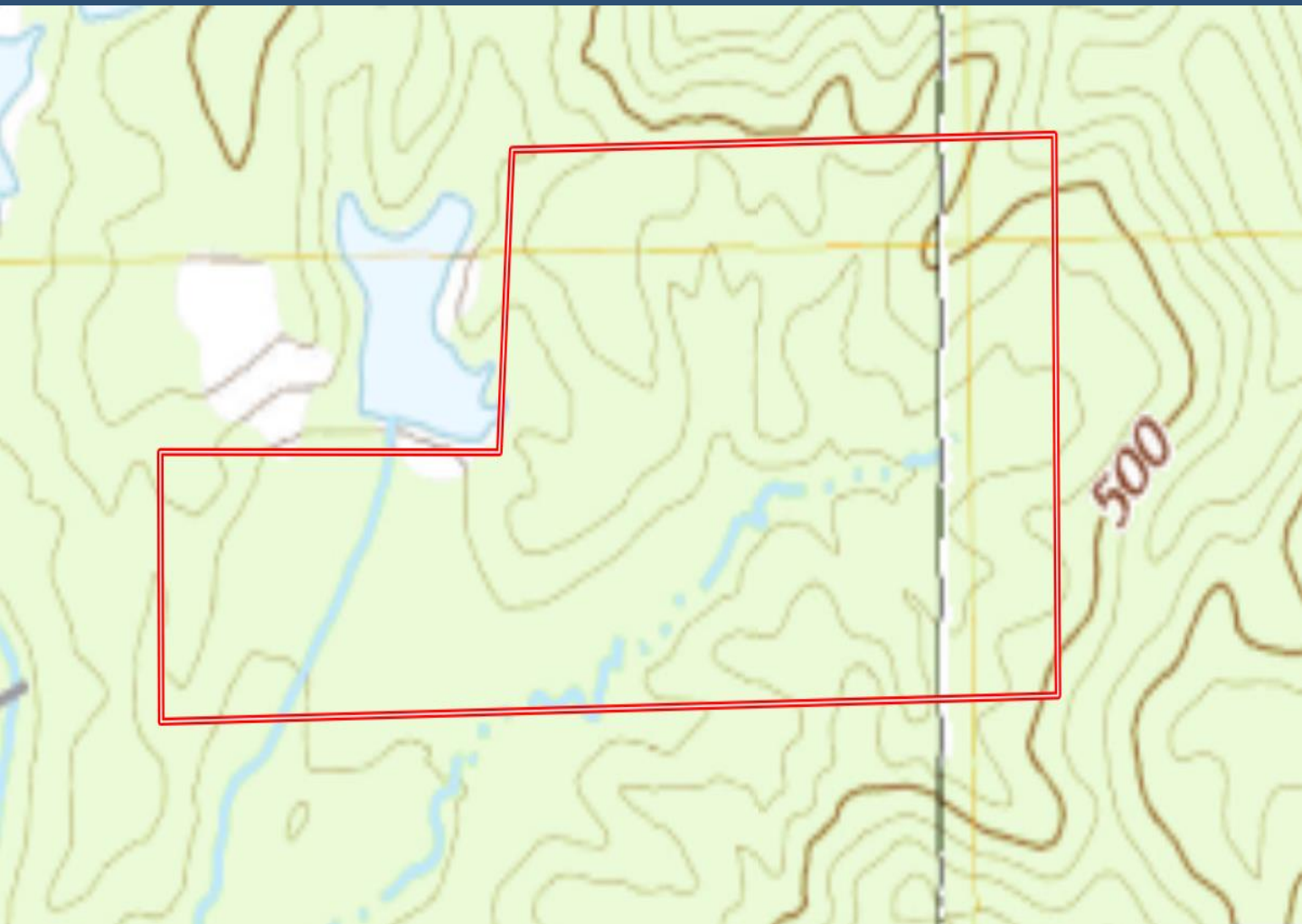
**A Real Estate Expert You Can Trust**

TomSmithLandandHomes.com

Information is believed to be accurate but not guaranteed.



# Topography Map



**WALKER  
TRANUM**  
REALTOR®

Office: 662.268.6333  
Cell: 662.769.1442  
Walker@TomSmithHomes.com



Expect More. Get More.

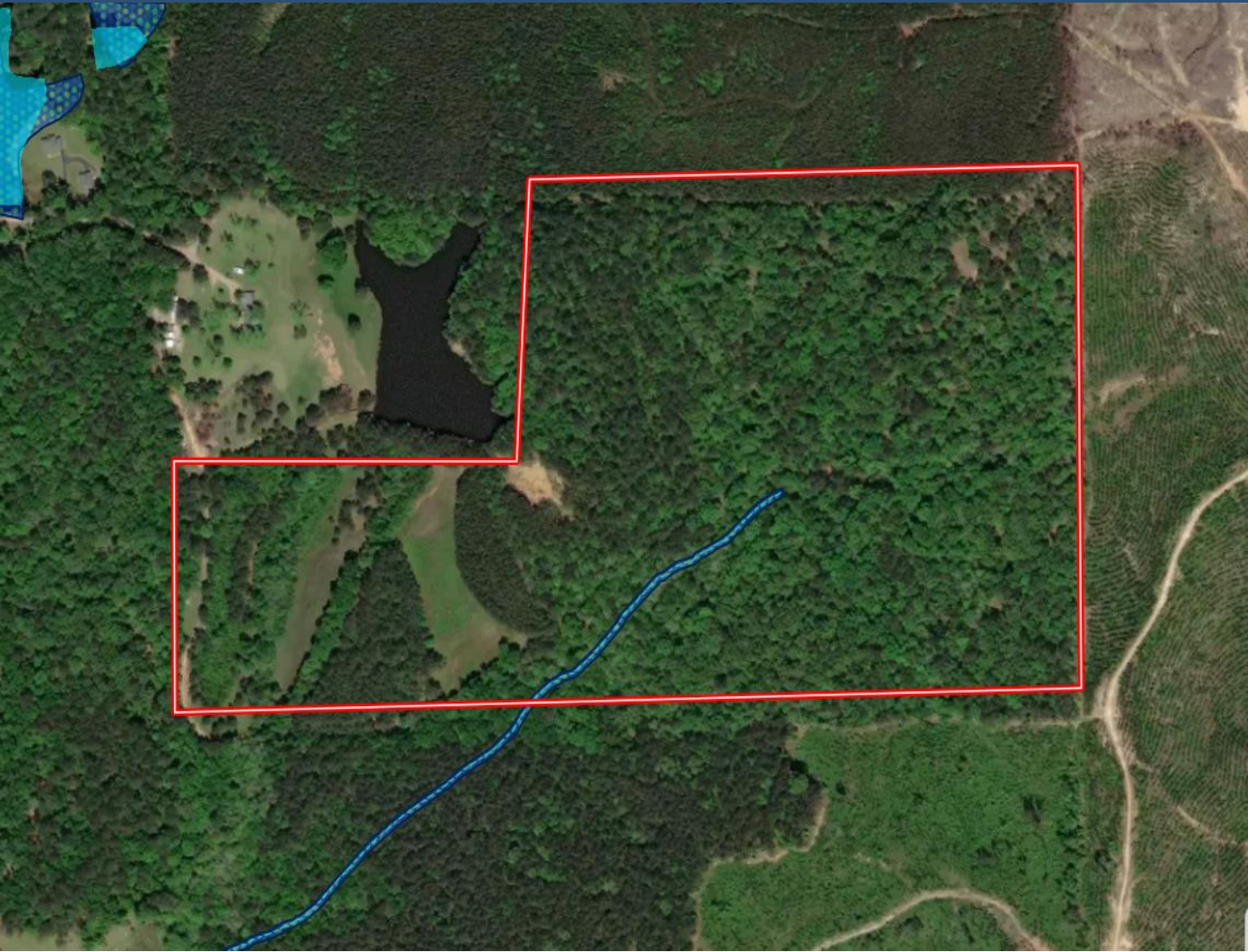
**A Real Estate Expert You Can Trust**

TomSmithLandandHomes.com

Information is believed to be accurate but not guaranteed.



# Flood Map



**WALKER  
TRANUM**  
REALTOR®

Office: 662.268.6333

Cell: 662.769.1442

Walker@TomSmithHomes.com



Expect More. Get More.

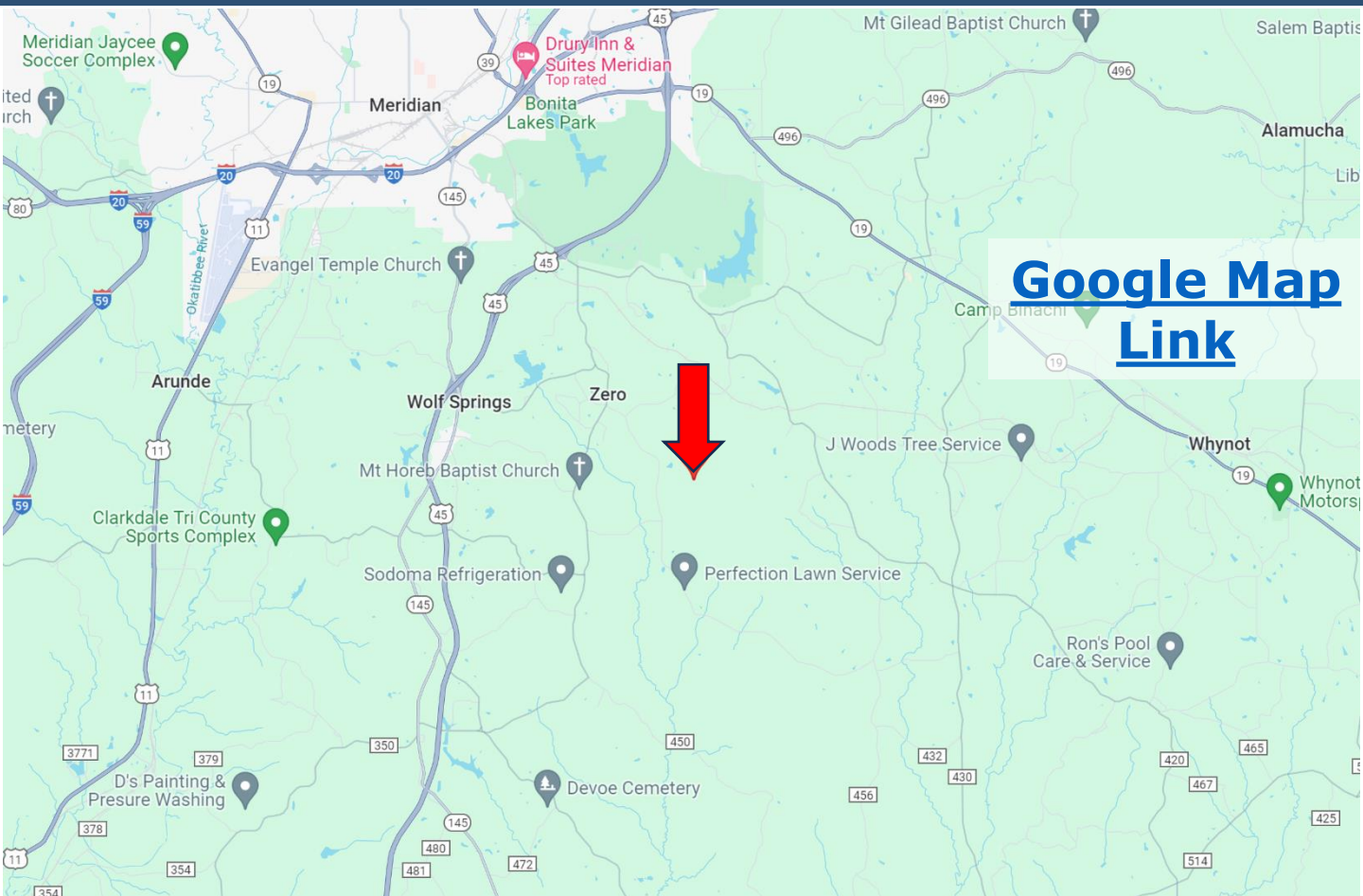
**A Real Estate Expert You Can Trust**

TomSmithLandandHomes.com

Information is believed to be accurate but not guaranteed.



# Directional Map



**Directions from I-20 in Meridian, MS:** Take exit 153 toward 22<sup>nd</sup> Avenue N/Downtown Meridian. Continue on 22<sup>nd</sup> Avenue Heights for 1.5 miles. Continue onto Causeville Road for 1.2 miles. Turn right onto Zero Road and travel 2.3 miles. Turn left onto Fisher Road and travel 1.3 miles. Turn left onto Frank Wilson Road, and follow it until you dead-end into the property.



**WALKER  
TRANUM**  
REALTOR®

Office: 662.268.6333

Cell: 662.769.1442

Walker@TomSmithHomes.com



Expect More. Get More.

**A Real Estate Expert You Can Trust**

TomSmithLandandHomes.com

Information is believed to be accurate but not guaranteed.

